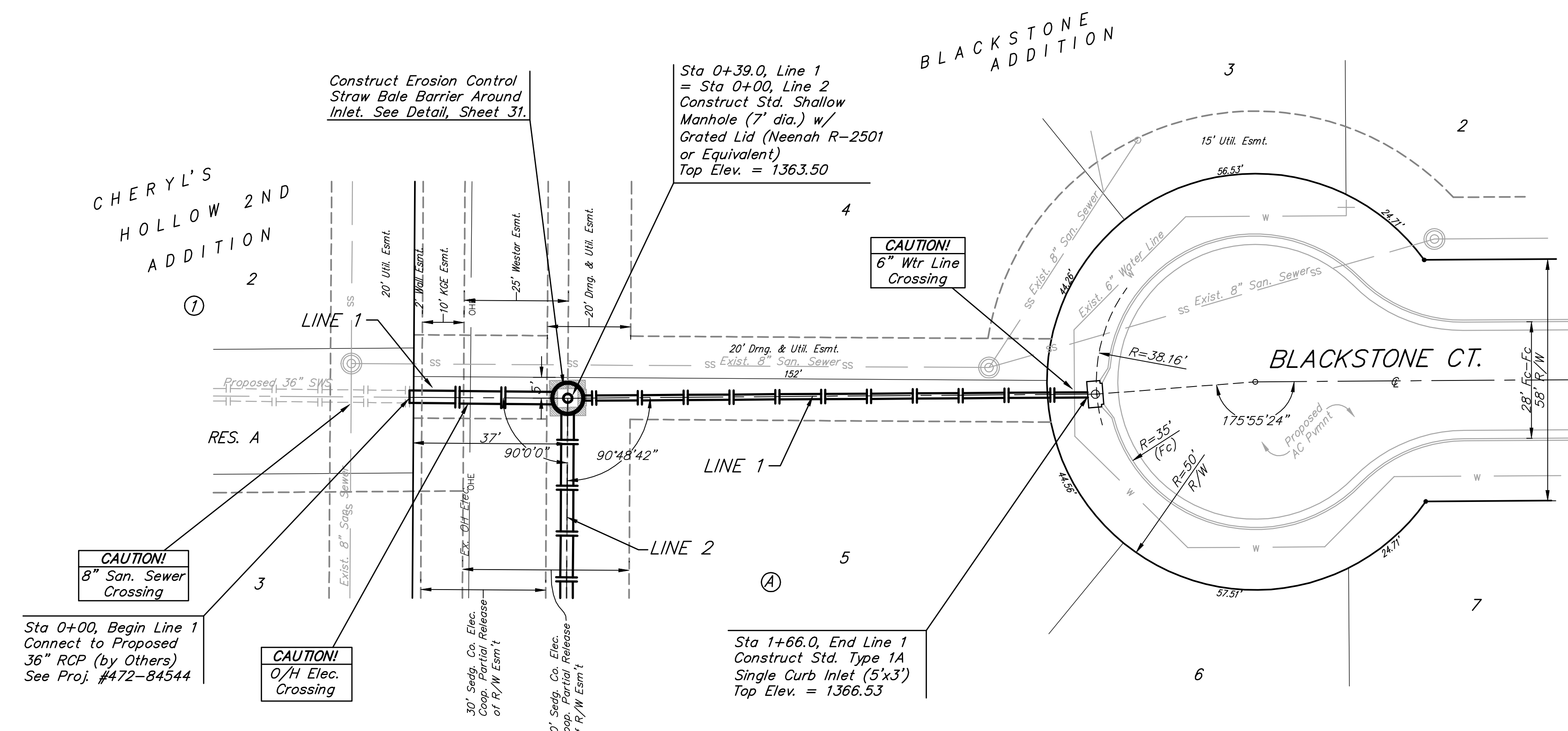
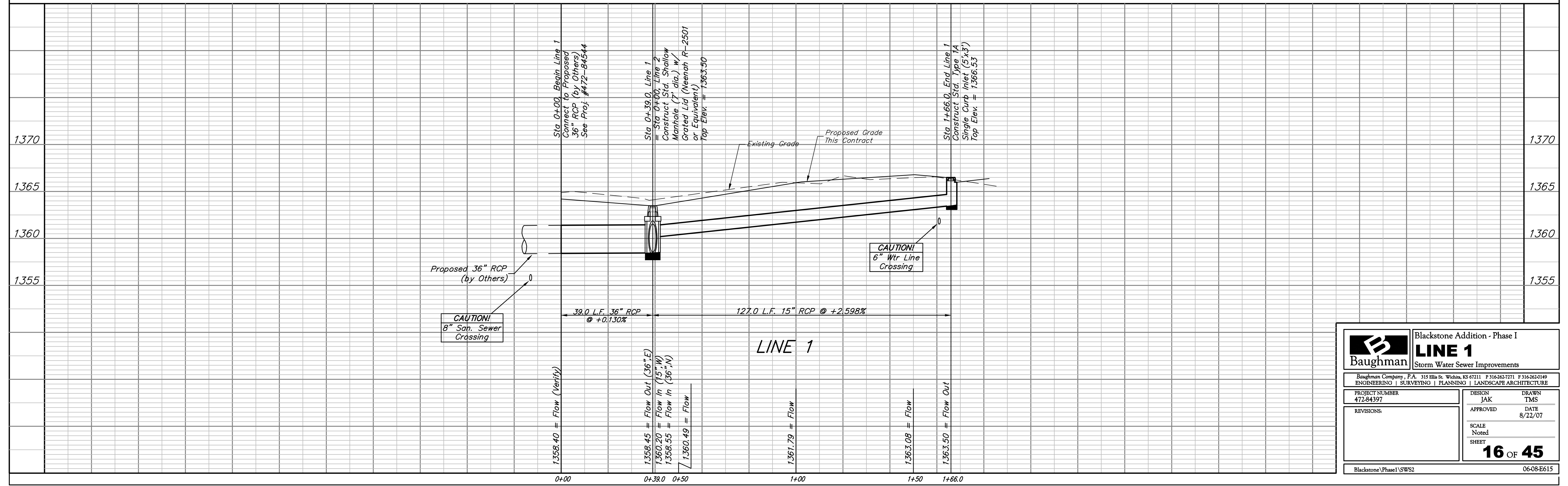


**BENCHMARKS:**  
 BM #1: City of Wichita Disc at Southwest Corner of 135th St. W. & 13th St. N. 30.00± S. of  $\odot$  35.00± W. of  $\odot$  Elev. = 1355.65 NGVD29  
 BM #2: Small Railroad Spike in 2nd HLP W. of 135th St. W. on South Side of 13th St. N., (N. Face of HLP). Elev. = 1359.50 NGVD29  
 BM #3: Small Railroad Spike in 4th HLP W. of 135th St. W. on South Side of 13th St. N., (N. Face of HLP). Elev. = 1366.64 NGVD29



Scale: 1" = 20' Horizontal  
 1" = 5' Vertical  
 • = Iron



|   |                |                                |              |
|---|----------------|--------------------------------|--------------|
| <b>Baughman</b>   |                | Blackstone Addition - Phase I  |              |
|   |                | <b>LINE 1</b>                  |              |
|   |                | Storm Water Sewer Improvements |              |
| Baughman Company, P.A. 315 Ellis St. Wichita, KS 67211 F 316-262-7271 F 316-262-0149<br>ENGINEERING   SURVEYING   PLANNING   LANDSCAPE ARCHITECTURE |                |                                |              |
| PROJECT NUMBER<br>472-84397   | DESIGN<br>JAK  | DRAWN<br>TMS                   |              |
| REVISIONS:  | APPROVED       | DATE<br>8/22/07                |              |
|   | SCALE<br>Noted | SHEET                          |              |
|   |                | <b>16</b>                      | <b>OF 45</b> |
| Blackstone\Phase I\SWS2   |                | 06-08-E615                     |              |