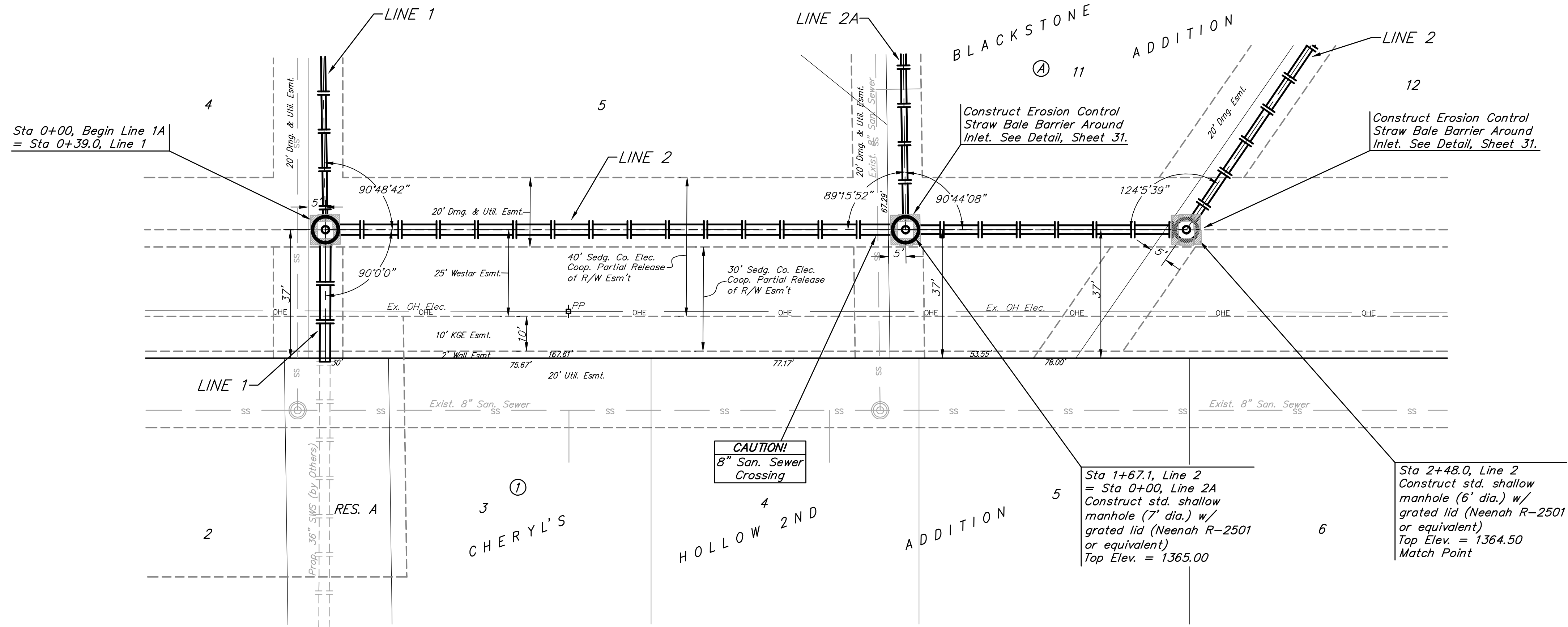
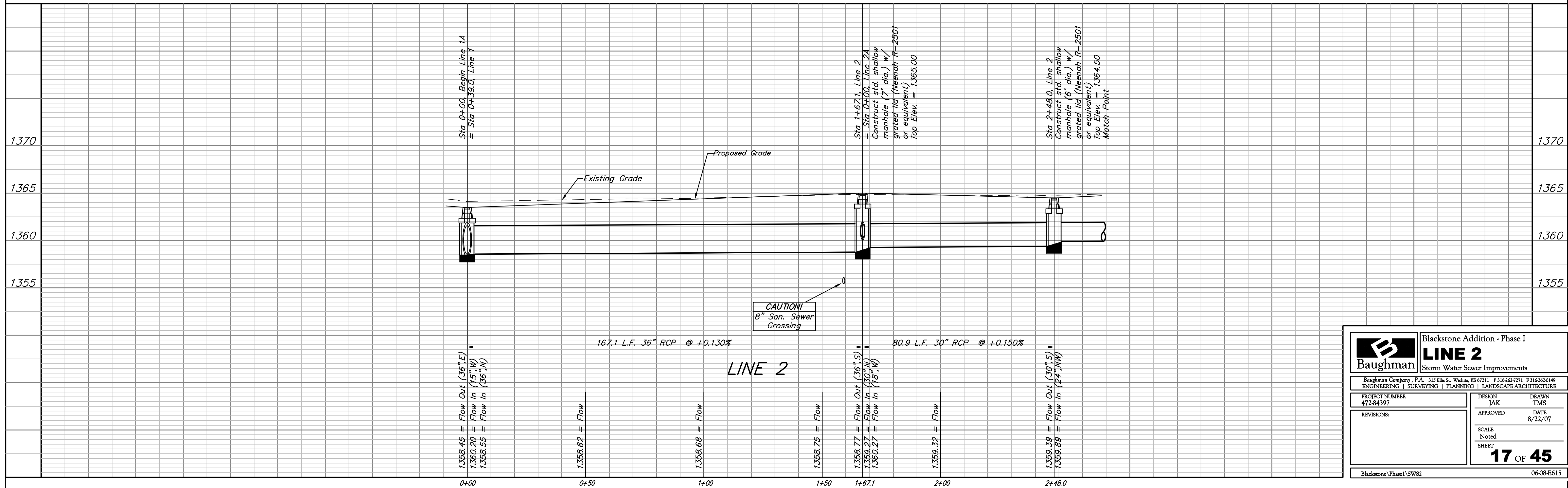


**BENCHMARKS:**  
 BM #1: City of Wichita Disc at Southwest Corner of 135th St. W. & 13th St. N. 30.00'± S. of C. 35.00'± W. of C. Elev. = 1355.65 NGVD29  
 BM #2: Small Railroad Spike in 2nd HLP W. of 135th St. W. on South Side of 13th St. N., (N. Face of HLP). Elev. = 1359.50 NGVD29  
 BM #3: Small Railroad Spike in 4th HLP W. of 135th St. W. on South Side of 13th St. N., (N. Face of HLP). Elev. = 1366.64 NGVD29



Scale: 1" = 20' Horizontal  
 1" = 5' Vertical  
 = Iron



<b>Baughman</b>		Blackstone Addition - Phase I	
		<b>LINE 2</b>	
		Storm Water Sewer Improvements	
Baughman Company, P.A. 315 Ellis St. Wichita, KS 67211 F 316-262-7271 F 316-262-0149 ENGINEERING   SURVEYING   PLANNING   LANDSCAPE ARCHITECTURE			
PROJECT NUMBER 472-84397	DESIGN JAK	DRAWN TMS	
REVISIONS:	APPROVED	DATE 8/22/07	
	SCALE Noted	SHEET <b>17 OF 45</b>	
Blackstone (Phase I) SWS2		06-08-E615	