

SPRINGDALE EAST 2ND ADDITION SANITARY SEWER IMPROVEMENTS 1149 PPS (607861)

GENERAL NOTES

Contractor will be required to provide a minimum advance notice of twenty-four (24) hours to utility companies prior to starting any excavation as follows:

Kansas One-Call 687-2470

The Contractor must notify the following in case of an emergency:

Cox Communications 262-0661
 Kansas Gas Service 383-8600
 K.G.E. Electric 383-8600
 Peoples Natural Gas Company 1-800-303-0357
 Southwestern Bell Telephone Company 1-800-286-8313
 City of Wichita Water Department 262-6000
 City of Wichita Sewer Maintenance 262-6000
 Jayhawk Pipeline LLC 755-0241

Underground utility service lines and overhead utility pole lines are to be adjusted as necessary by others prior to construction unless the plans specifically call for their adjustment by the Contractor or unless the plans specifically identify a utility to be adjusted by its owner during construction. Existing utilities and their location, as shown on the plans, represent the best information obtainable for design. Location information has been obtained from the various utility companies and is either from company record drawings or company-provided field locations. The Contractor will be required to work around existing utilities within the right-of-way which do not conflict with proposed construction.

A saw cut of at least one-half the depth of existing surface courses or one-fourth the depth of existing total pavement thickness shall be provided at locations where proposed construction abuts an existing surface course or pavement for which partial removal of that surface or pavement is required, except when such saw cuts are within three (3) feet of an existing joint the limits of removal shall be extended to the existing joint. Such saw cuts will not be paid for directly and this cost shall be considered as subsidiary to the removal of the surface or pavement.

Rubble from the removal of miscellaneous structures and excess excavation which is to be wasted shall be disposed of on sites to be provided by the Contractor. These sites shall be approved by the Engineer as to suitability, appearance and site location. Locations that, in the opinion of the Engineer, will leave an unsightly appearance will not be approved.

All disposal sites must be approved by the Kansas Department of Health and Environment. Material either stockpiled or disposed of in a flood plain would require a Kansas State Board of Agriculture permit. Any material dumped in waters of the United States or wetlands is subject to U.S. Corps permitting regulations. Any material buried or stockpiled beyond approved of Engineers construction limits would require additional archeological investigations unless buried in a previously approved borrow location.

The Engineer shall take field ties to all quarter section corners. The Contractor shall set a City survey monument in the required location where such quarter section corners fall within the limits of pavement construction. Survey monuments will be furnished by the City. The Engineer will accurately locate and install the iron at the quarter section corner. This work will not be paid for directly, but shall be considered subsidiary to the other pay items of work in the contract.

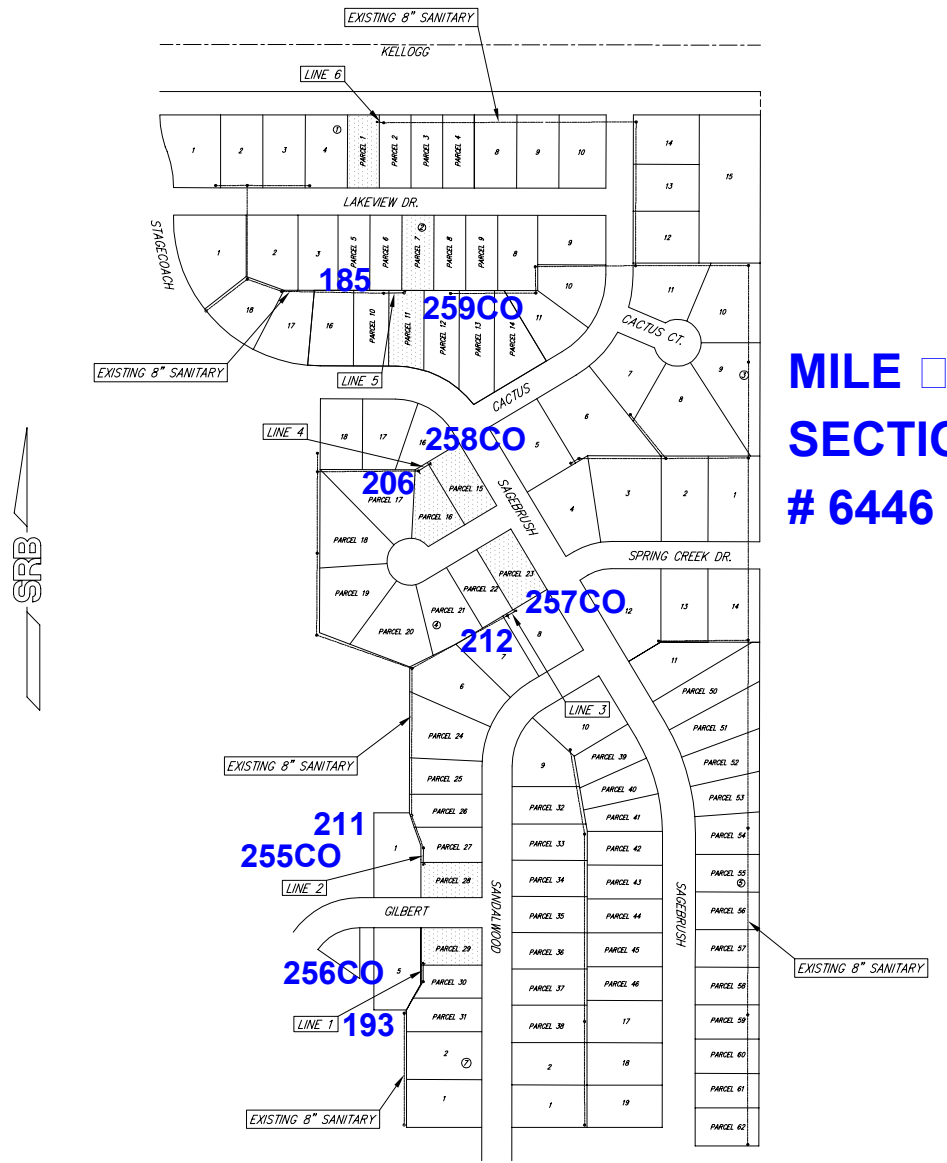
The Contractor shall notify pipeline companies at least 24 hours in advance of any work being performed across and/or adjacent to pipelines.

The Contractor shall give all property owners and/or tenants of developed property directly abutting the construction of this project a minimum of ten (10) days advance notice prior to start of construction.

The Contractor shall seed, fertilize and mulch all disturbed areas upon completion of construction. Incidental to the bid item for "Site Clearing and Restoration".

All manhole adjustments shall be done in accordance with the City of Wichita Standard Specifications.

Note: Project Finaled 9/11/07. Line 6 not constructed at this time - new plans will need to be submitted if/when a line is extended to Lot 5, Block 1. JDL 9/13/07.



MILE SECTION # 6446

IMPROVEMENT DISTRICT

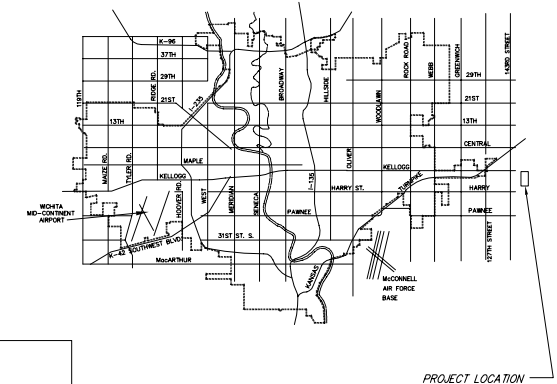
CITY OF WICHITA, KANSAS
MICHAEL E. LINDEBAK, P.E. - CITY ENGINEER

BENCH MARKS

BM #1 - "□" TOP OF CURB 20'+/- WEST OF END OF CURB ON SOUTH SIDE OF GILBERT
 ELEV. = 1314.30
 BM #2 - "□" CUT ON TOP OF CURB @ P.C. ACROSS FROM GILBERT ON STAGECOACH
 ELEV. = 1307.33

INDEX OF SHEETS

- TITLE SHEET
- LINE 1 AND LINE 2 PLAN AND PROFILE
- LINE 3 AND LINE 4 PLAN AND PROFILE
- LINE 5 AND LINE 6 PLAN AND PROFILE
- KEYMAP
- PLAT COPY



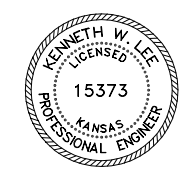
APPROVED AS NOTED
 BY CITY ENGINEER OF WICHITA

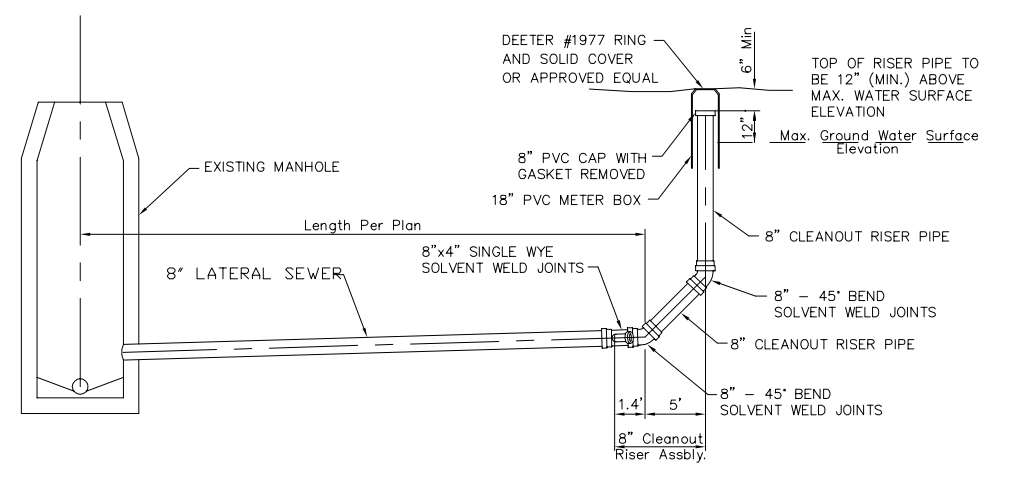
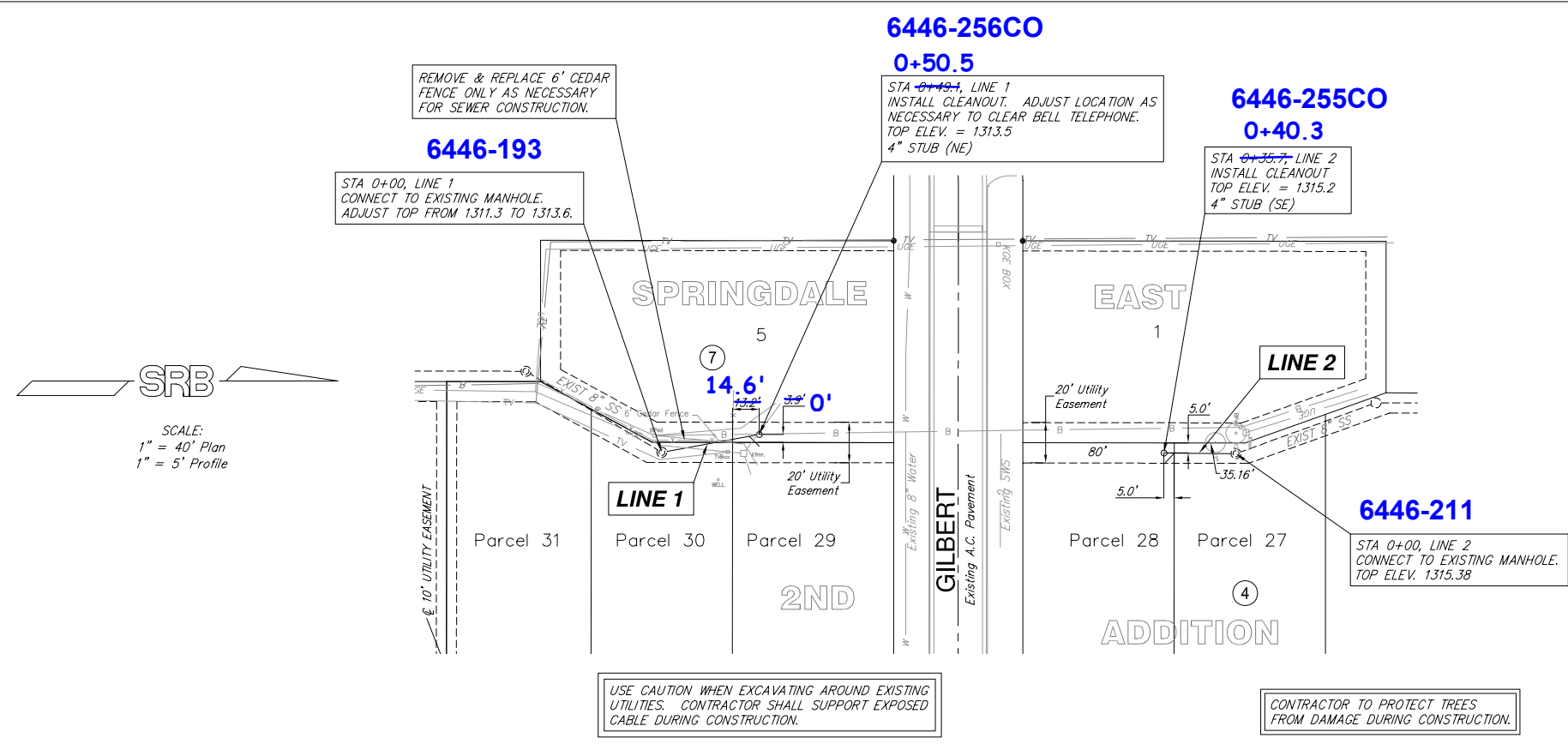
Sanitary Sewers VRH 9/26/01
 Storm Sewers _____
 Driveway Approaches _____
 Water Mains _____
 Paving _____

NOTE TO CONTRACTORS

Inspection and testing for this project are to be provided by a Licensed Consulting Engineering Firm under contract with the Owner/Developer. Said inspection to be in accordance with the City of Wichita standard construction engineering practices and certified by a Licensed Professional Engineer. No work shall be performed in dedicated easements or public right-of-way by the Contractor without such inspection, nor shall any work be commenced without written authorization by the City Engineer.

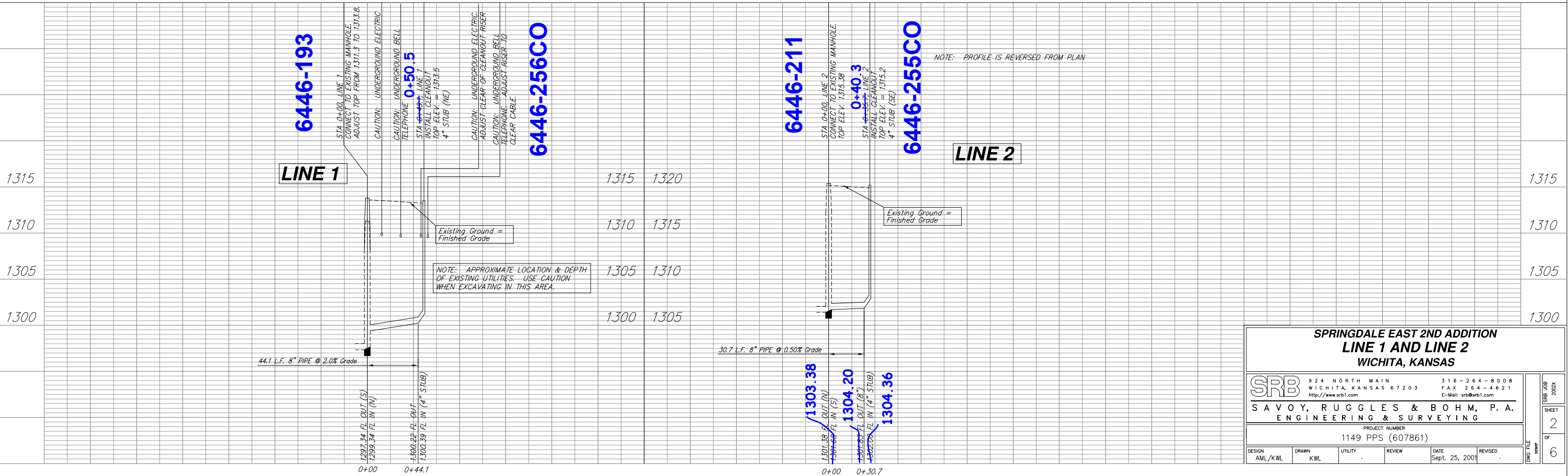
LINE 1 AS BUILT 1/2/03 TLK
 LINE 2 AS BUILT 11/19/01 CMB
 LINE 3 AS BUILT 5/14/02 KWL
 LINE 4 AS BUILT 4/5/03 TLK
 LINE 5 AS BUILT 6/4/03 TLK





AS BUILT LINE 1 1/2/03
 TLK / RUGGLES & BOHM

AS BUILT LINE 2 11/19/01 CMB



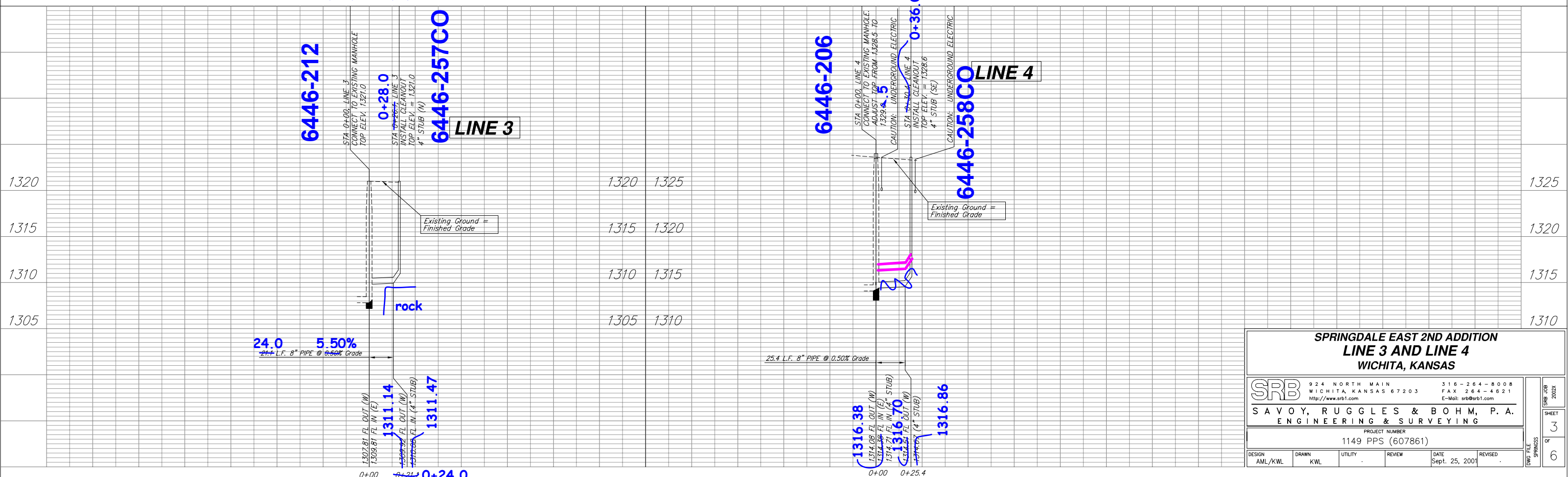
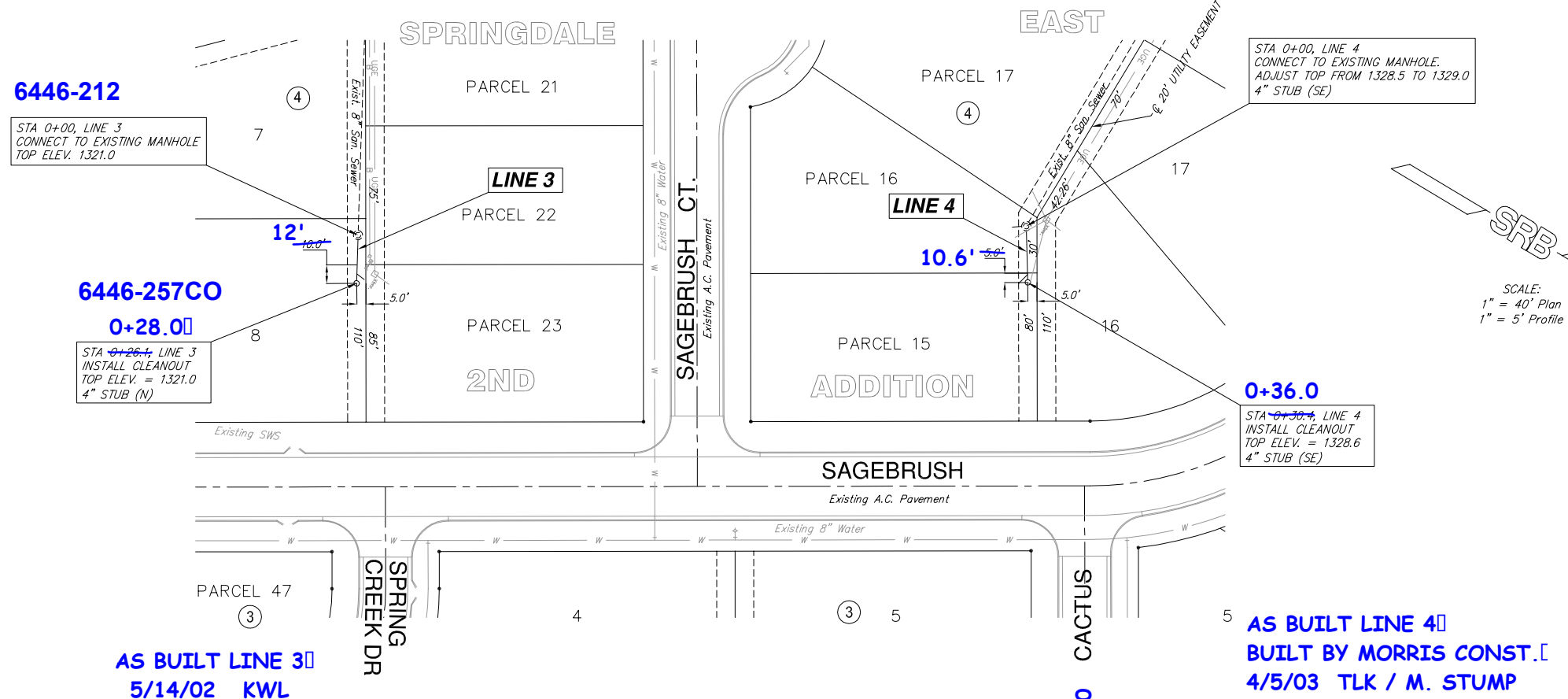
SRB 924 NORTH MAIN 316-264-8008
 WICHITA, KANSAS 67203 FAX 264-4621
 http://www.srb1.com E-Mail: srb@srb1.com

SAVOY, RUGGLES & BOHM, P. A.
 ENGINEERING & SURVEYING

PROJECT NUMBER
 1149 PPS (607861)

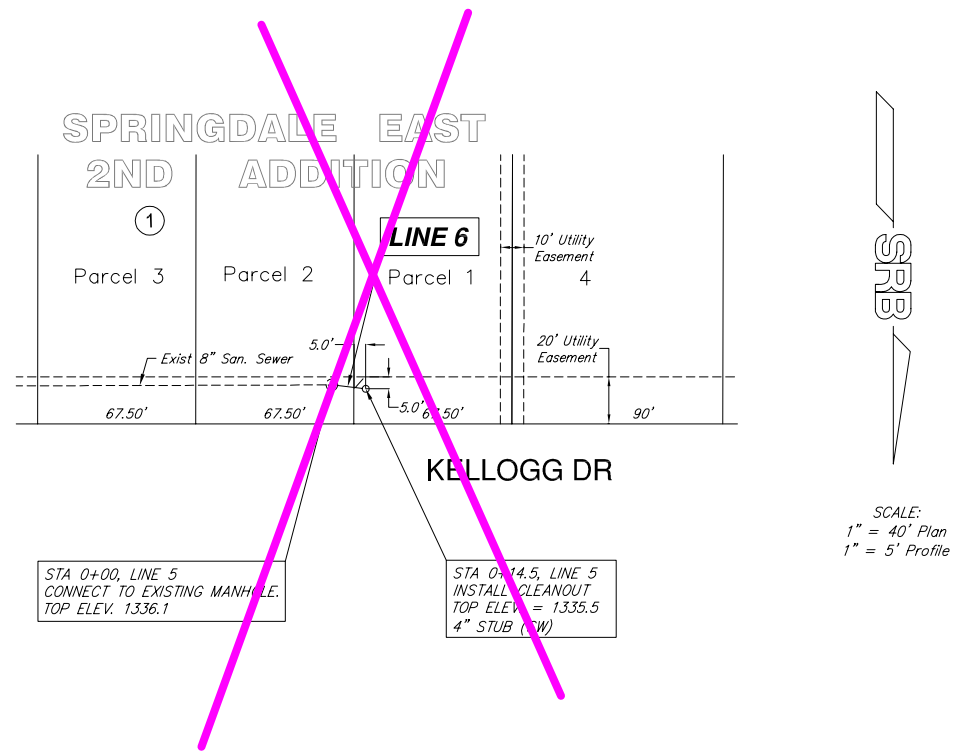
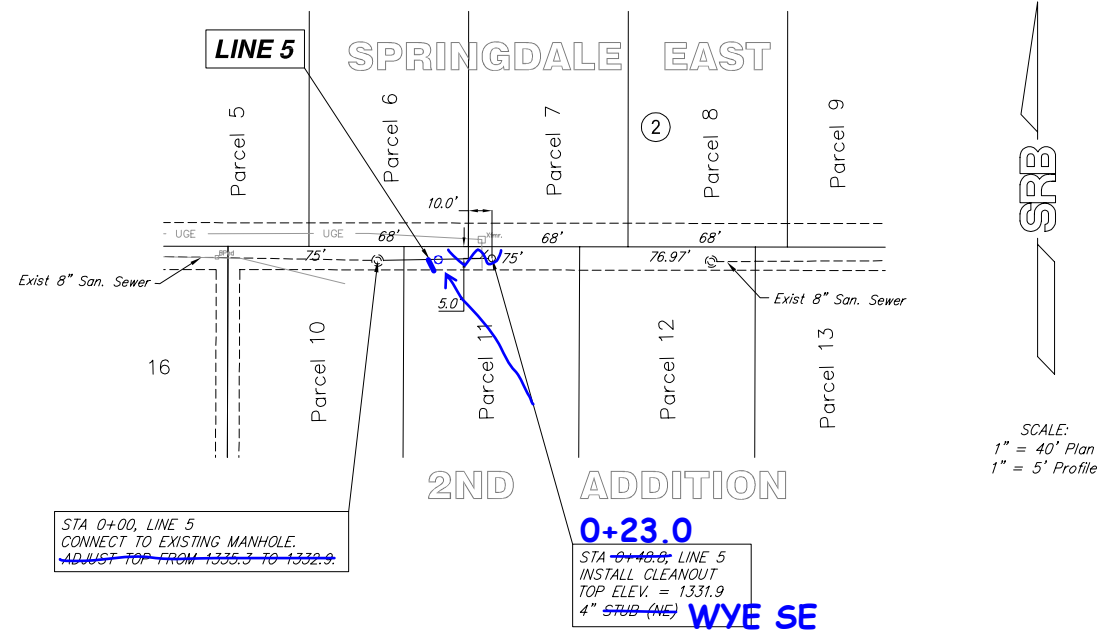
DESIGN AML/KWL	DRAWN KWL	UTILITY	REVIEW	DATE Sept. 25, 2001	REVISED
-------------------	--------------	---------	--------	------------------------	---------

DWG FILE SHEET OF 6

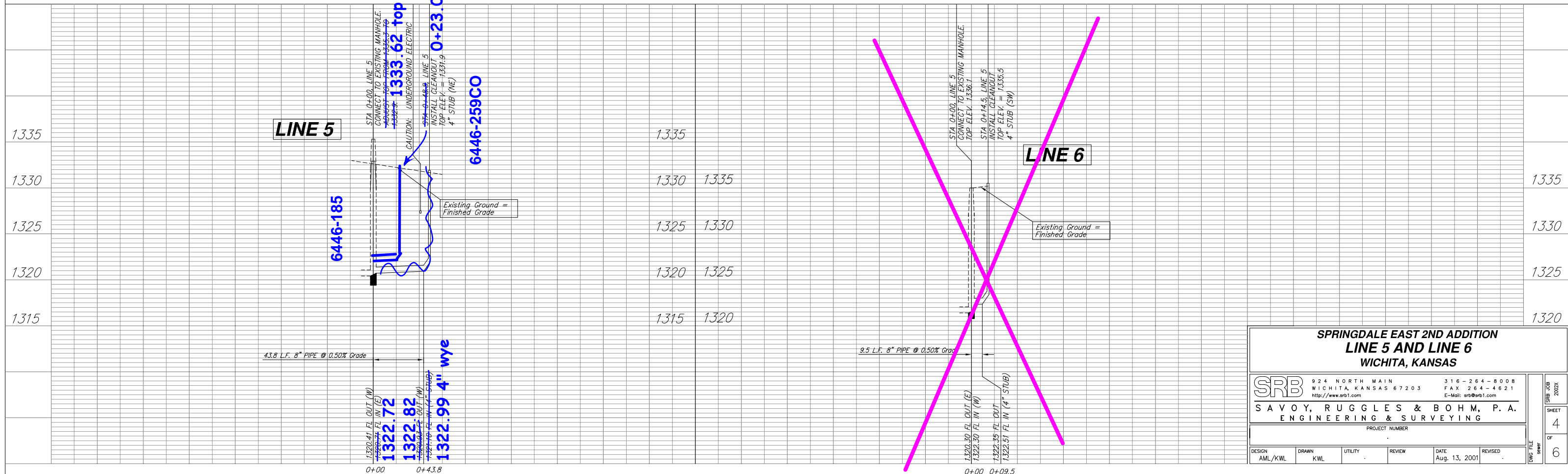


**SPRINGDALE EAST 2ND ADDITION
LINE 3 AND LINE 4
WICHITA, KANSAS**

SRB		924 NORTH MAIN WICHITA, KANSAS 67203 http://www.srb1.com	316-264-8008 FAX 264-4621 E-Mail: srb@srb1.com
SAVOY, RUGGLES & BOHM, P. A. ENGINEERING & SURVEYING			
PROJECT NUMBER 1149 PPS (607861)			
DESIGN AML/KWL	DRAWN KWL	UTILITY	REVIEW DATE Sept. 25, 2001
DWG FILE SPRINGDAS			SRB JOB 2002X SHEET 3 OF 6



Line 5 As Built
6/4/03 by Tim Kelly (R & B)
Built by JM Trenching



**SPRINGDALE EAST 2ND ADDITION
LINE 5 AND LINE 6
WICHITA, KANSAS**

SRB	924 NORTH MAIN WICHITA, KANSAS 67203 http://www.srb1.com	316-264-8008 FAX 264-4621 E-Mail: srb@srb1.com
	SAVOY, RUGGLES & BOHM, P. A. ENGINEERING & SURVEYING	
PROJECT NUMBER		
DESIGN AML/KWL	DRAWN KWL	UTILITY
REVIEW	DATE Aug. 13, 2001	REVISED
DWG FILE Number	SHEET 4	OF 6