

LATERAL 3, MAIN 6, COWSKIN INTERCEPTOR SEWER Sanitary Sewer Improvements to serve **TURKEY CREEK 2ND ADDITION - PHASE III** CITY OF WICHITA, KANSAS

James L. Armour, P.E. City Engineer
Project Number
468-83820
O.C.A. Number
744197

Scale: 1" = 150'

Sheet Index

Title Sheet	1
Line 1	2-3
Line 1A	4
Line 1B	5
Line 2	6-7
Standard Manhole Detail	8
Ring & Cover Detail	9
Vertical Riser Detail	10
Erosion Control BMP's	11-14
Erosion Control/Easement Grading	15
Coordinate Sheet	16
Copy of Plat	17

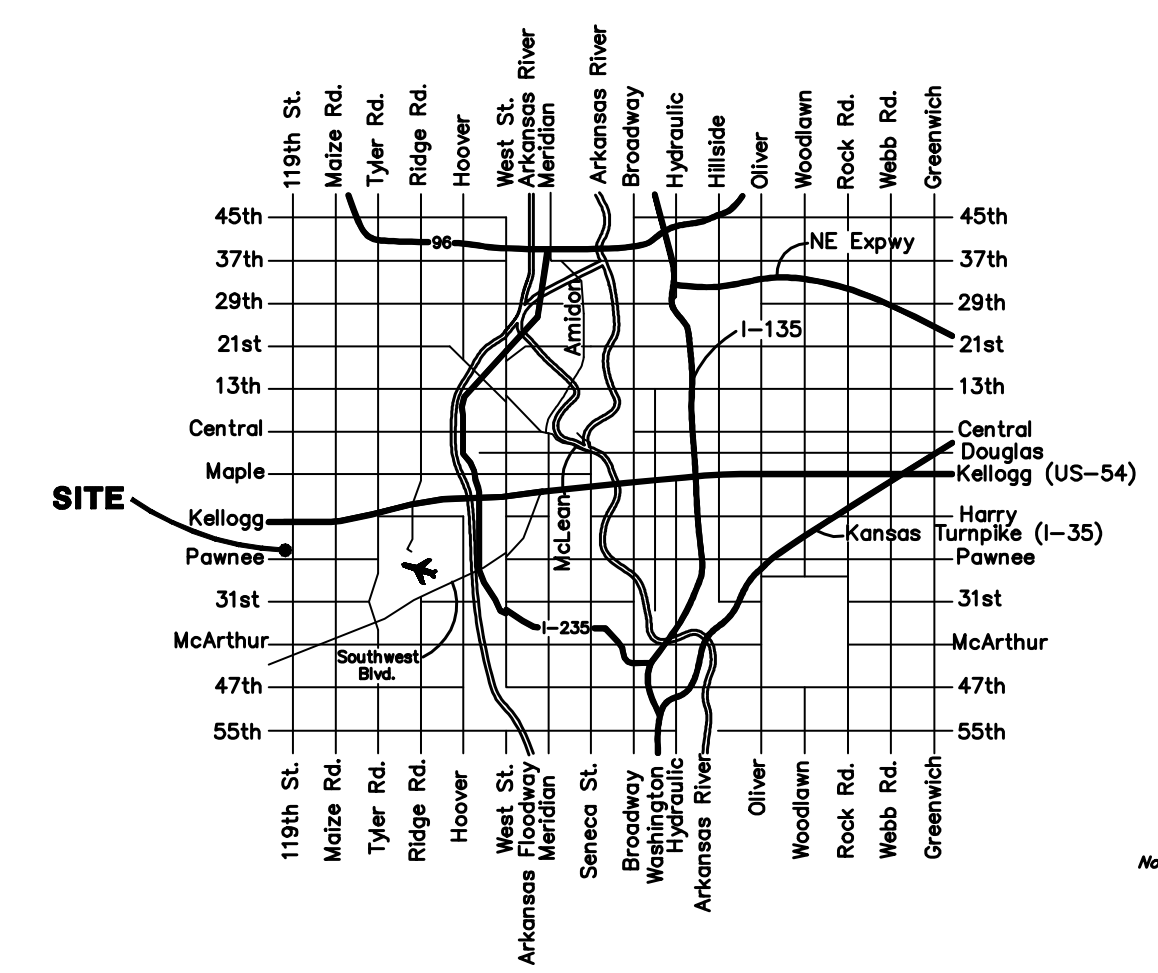
GENERAL NOTES:

- Contractor will be required to provide notice to utility companies a minimum of Forty-Eight (48) hours prior to any excavation, as follows:
Kansas One-Call 687-2470
The Contractor must notify the following in case of an emergency:
Cox Communications 262-4270
Kansas Gas Service 1-888-482-4950
Westar Energy 363-8650
Aquila Energy 1-800-303-0357
Southwestern Bell 268-2245
City of Wichita Water Dept. 268-4563
City of Wichita Sewer Maint. 268-4024
City of Wichita Storm Sewer Maint. 268-4090
City of Wichita Traffic Maint. 268-4034
Conoco Pipeline Co. 1-800-231-2551
Williams Pipeline Co. 529-6600
Phillips Pipeline Co. 1-800-766-8230
- Utility service lines, poles, valve boxes, meters, and etcetera are to be adjusted as necessary by others prior to construction unless the plans specifically call for their adjustment by the Contractor or unless the plans specifically identify a utility to be adjusted by its owner during construction. Existing utilities and their location, as shown on the plans, represent the best information obtainable for design. The Contractor will be required to work around existing utilities within the right-of-way which do not conflict with proposed construction.
- Rubble from the removal of miscellaneous structures and excess excavation which is to be wasted shall be disposed of on sites to be provided by the Contractor. These sites shall be approved by the Engineer as to suitability, appearance on site location. Locations, in the opinion of the Engineer, will leave an unsightly appearance will not be approved. All disposal sites must be approved by the Kansas Department of Health and Environment. Material either stockpiled or disposed of in a flood plain would require a Kansas State Board of Agriculture permit. Any material dumped in waters of the United States or wetlands is subject to U.S. Corps. of Engineers permitting regulations. Any material buried or stockpiled beyond approved construction limits would require additional archaeological investigations unless buried in a previously approved borrow location.
- Trees and shrubs in public right-of-way which are in direct conflict with proposed new construction shall be removed by the Contractor with the Engineer's approval. Trees and shrubs which are not in direct conflict with proposed new construction shall be saved and protected from damage.
- The Contractor shall give all property owners and/or tenants of developed property abutting the construction of this project a minimum of ten (10) days advance notice prior to start of construction.
- The Contractor shall be responsible for preserving property irons. The Contractor will be required to re-establish any property irons which are damaged or destroyed by his construction operations. Such irons shall be re-established by a licensed land surveyor in accordance with state laws.
- The Contractor shall be responsible for maintaining continuous flow of sewage through construction. Contractor's proposed method for maintaining sewage flow shall be approved by the Engineer. Cost of maintaining flow of sewage through construction will not be paid for directly and this cost shall be considered as subsidiary to the other pay items of work.
- All existing and proposed erosion control measures including silt fencing, erosion control mat, straw bales, inlet barriers, and const. entrance shall be maintained throughout construction by the contractor and until project is accepted by the City of Wichita. The on-site engineer shall complete weekly reports on the status of erosion control measures. The contractor shall be required to comply with maintenance and/or replacement of erosion control measures as determined by the on-site engineer until project is accepted by City of Wichita. Maintenance and/or replacement of erosion control measures to be paid by L.S. bid item "Site Clearing and Restoration."
- All areas disturbed during construction shall be seeded at 300 lbs./acre with Rye Grass immediately following construction in that area. Contractor shall prepare ground per City Specifications. Cost shall be paid by bid item "Project Seeding."
- When connecting to existing manhole or stub, the contractor shall reshape manhole bottom or adjust the existing stub's alignment or elevation as necessary. Cost shall be subsidiary to project.
- Contractor shall be required to backfill front loaded sanitary sewer trenches (Lot 17, Blk. C) with sand, water-jetted and vibrated. Cost to be bid as "Sand Backfill Jetted and Vibrated".
- All excess excavation shall remain on site and be spread evenly on lots outside of easements & right of ways.
- The developer of this project is Paul E. Kelsey, and may be reached at (316) 722-1077

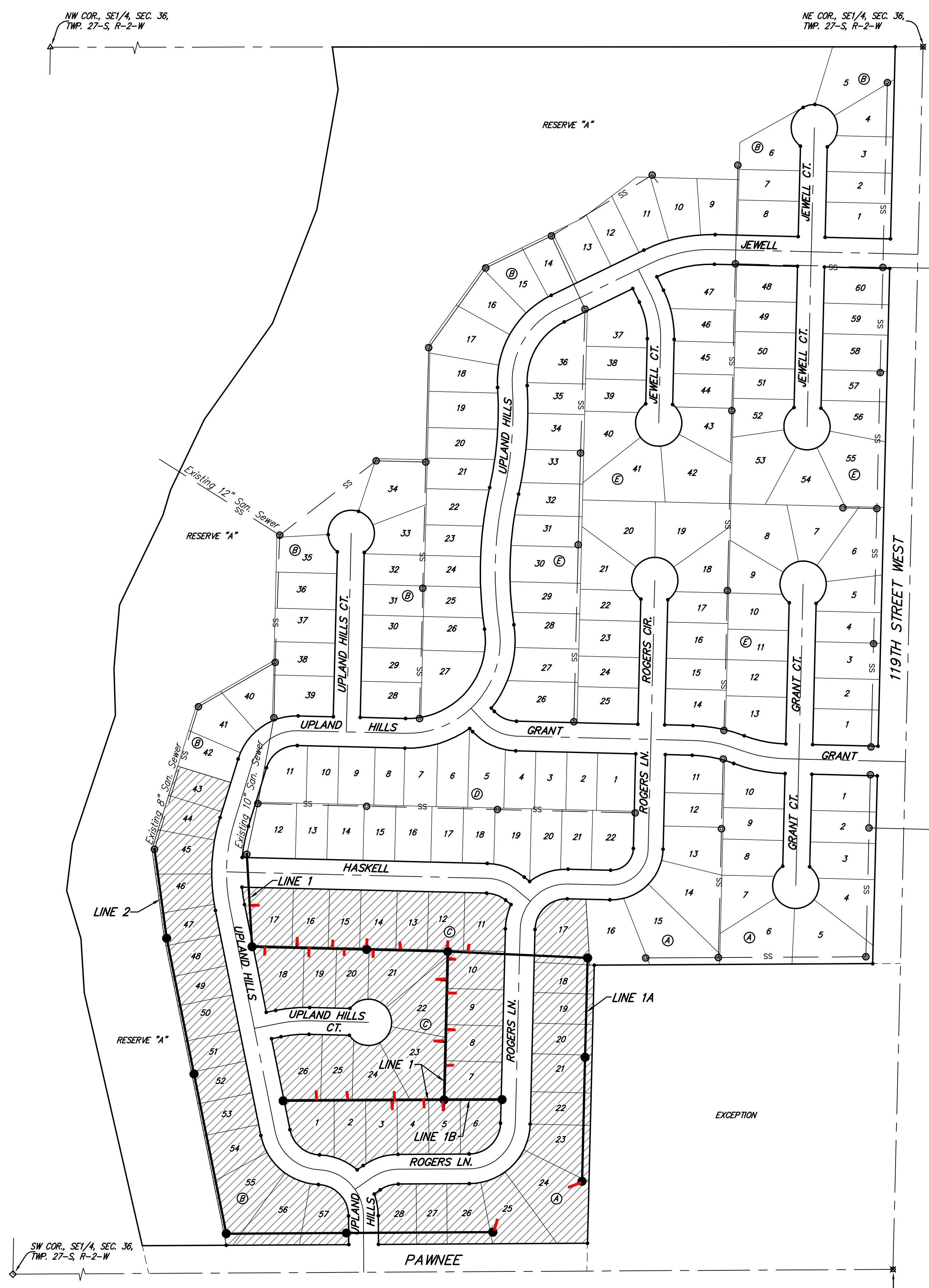
Benchmarks

BM #1: 119th St. W. & Pawnee
City of Wichita Benchmark Disc.
NE corner of intersection. 40' E
and 30' N of centerline. 59.5' N of
power pole @ SE corner of
intersection. 156.8' NNE of
centerline of E concrete headwall on
culvert under 119th St. W.
Elev. = 148.68 (City Datum)
Elev. = 1336.08 (N.G.V.D.29)

BM #2: C.O.W. disk in curb at south
end of east curb return at
intersection of Jewell & Jewell Ct.
(Lots 48-60, Block E).
Elev. = 146.84 (City Datum)



Vicinity Map



Benefit District

Dondlinger & Sons Construction Co., Inc. - Contractor
Sholander, City - Inspector
Released 8/20/07
As-Built
Risers & Stubs
.pdf by JDL 9/13/07