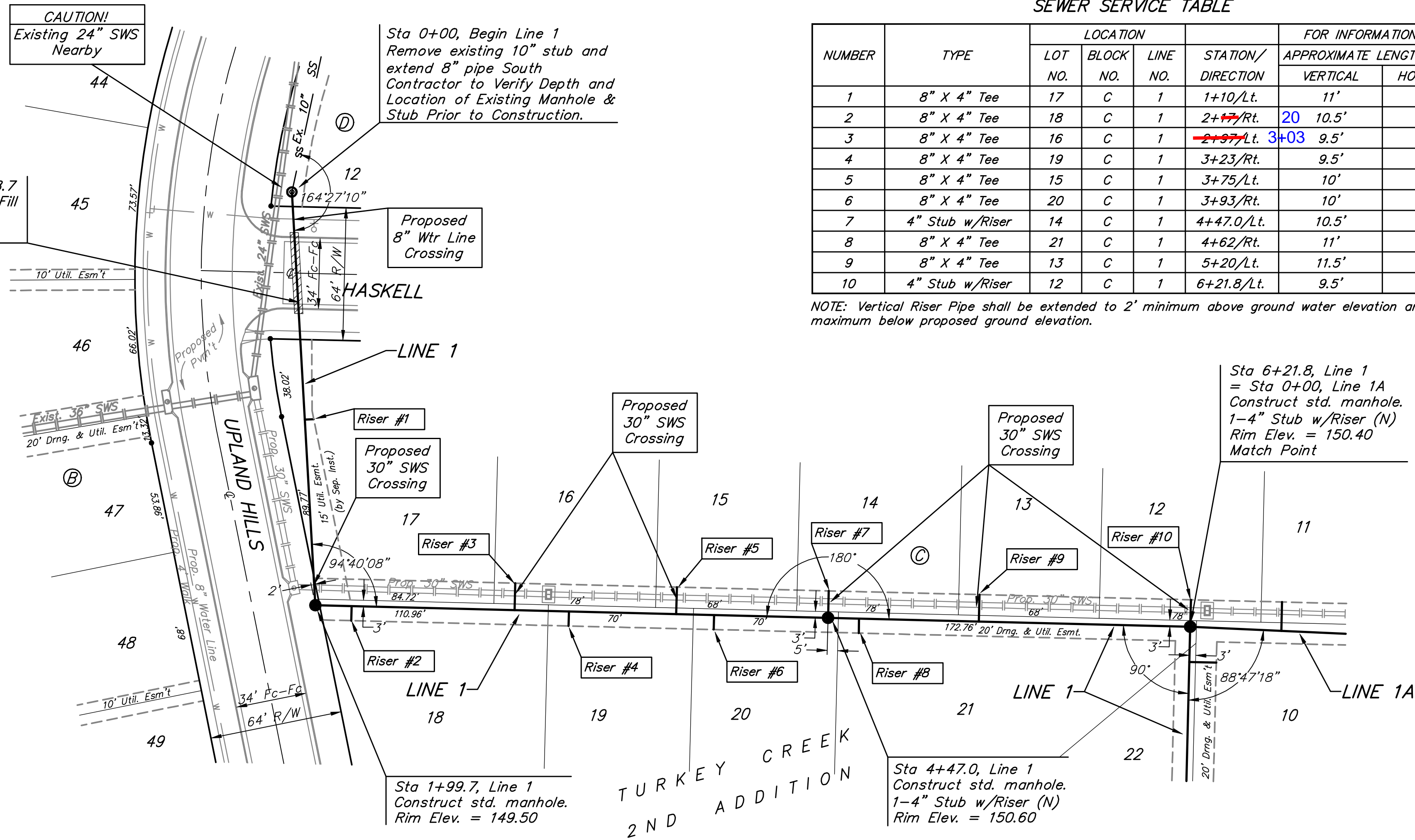


BENCHMARKS:
 BM #1: 119th St. W. & Pawnee
 City of Wichita Benchmark Disc.
 NE corner of intersection. 40' E
 and 30' N of centerline. 59.5' N of
 power pole @ SE corner of
 intersection. 156.8' NNE of
 centerline of E concrete headwall on
 culvert under 119th St. W.
 Elev. = 148.68 (City Datum)
 Elev. = 1336.08 (N.G.V.D.29)

BM #2: C.O.W. disk in curb at south
 end of east curb return at
 intersection of Jewell & Jewell Ct.
 (Lots 48-60, Block E).
 Elev. = 146.84 (City Datum)

TURKEY CREEK
 2ND ADDITION

The Contractor shall be required to
 backfill trench with sand per City Specs.
 from Sta. 0+58.7 to Sta. 1+99.7, Line 1.
 To be bid as "L.F. Sand Backfill Jetted
 and Vibrated"

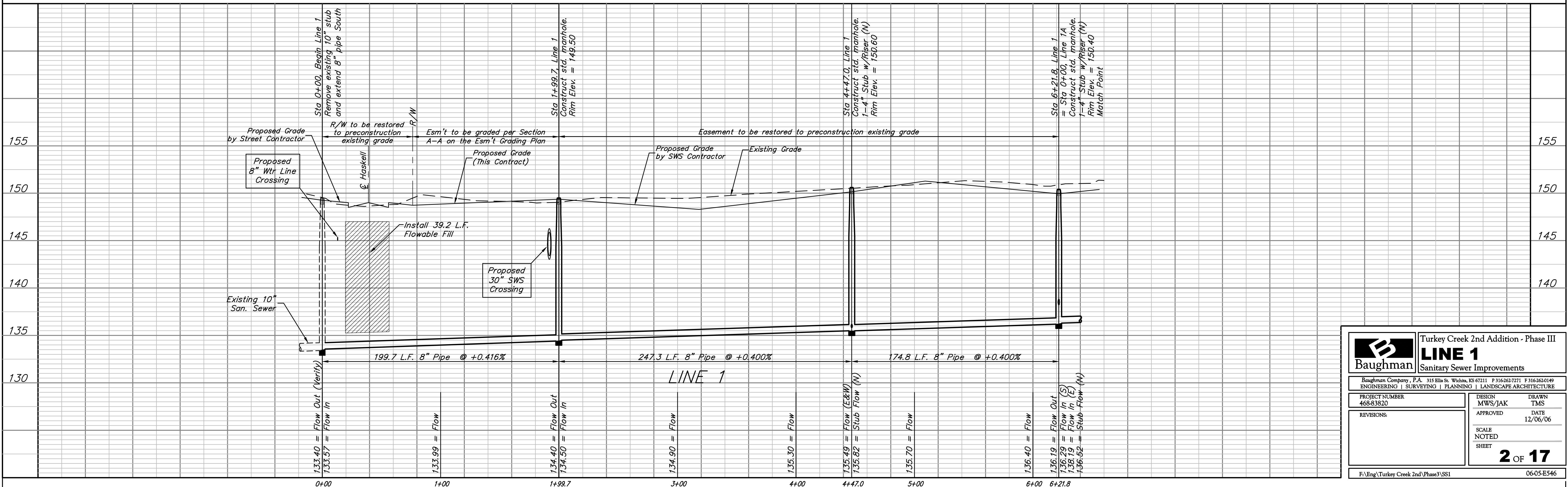


SEWER SERVICE TABLE

NUMBER	TYPE	LOCATION			FOR INFORMATION ONLY		
		LOT NO.	BLOCK NO.	LINE NO.	STATION/DIRECTION	APPROXIMATE LENGTH 4" PIPE	
					VERTICAL	HORIZONTAL	
1	8" X 4" Tee	17	C	1	1+10/Lt.	11'	5'
2	8" X 4" Tee	18	C	1	2+77/Rt.	20	10.5'
3	8" X 4" Tee	16	C	1	2+97/Lt.	3+03	9.5'
4	8" X 4" Tee	19	C	1	3+23/Rt.		9.5'
5	8" X 4" Tee	15	C	1	3+75/Lt.		10'
6	8" X 4" Tee	20	C	1	3+93/Rt.		10'
7	4" Stub w/Riser	14	C	1	4+47.0/Lt.		10.5'
8	8" X 4" Tee	21	C	1	4+62/Rt.		11'
9	8" X 4" Tee	13	C	1	5+20/Lt.		11.5'
10	4" Stub w/Riser	12	C	1	6+21.8/Lt.		9.5'

NOTE: Vertical Riser Pipe shall be extended to 2' minimum above ground water elevation and 4' maximum below proposed ground elevation.

Scale: 1" = 40' Horizontal
 1" = 5' Vertical
 • = Iron



Baughman Turkey Creek 2nd Addition - Phase III
LINE 1
 Sanitary Sewer Improvements

PROJECT NUMBER: 468-83820
 DESIGN: MWS/JAK
 DRAWN: TMS
 APPROVED: DATE: 12/06/06

REVISIONS:

SCALE: NOTED
 SHEET: **2 OF 17**

F:\Eng\Turkey Creek 2nd\Phase3\SS1 06-05-E546