

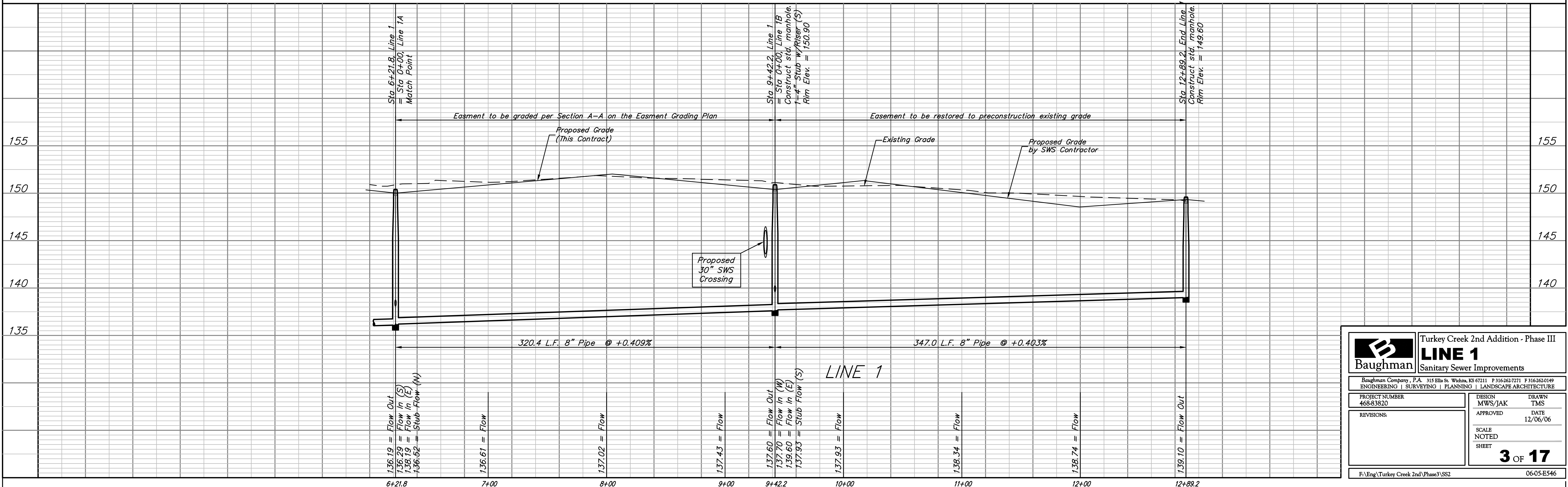
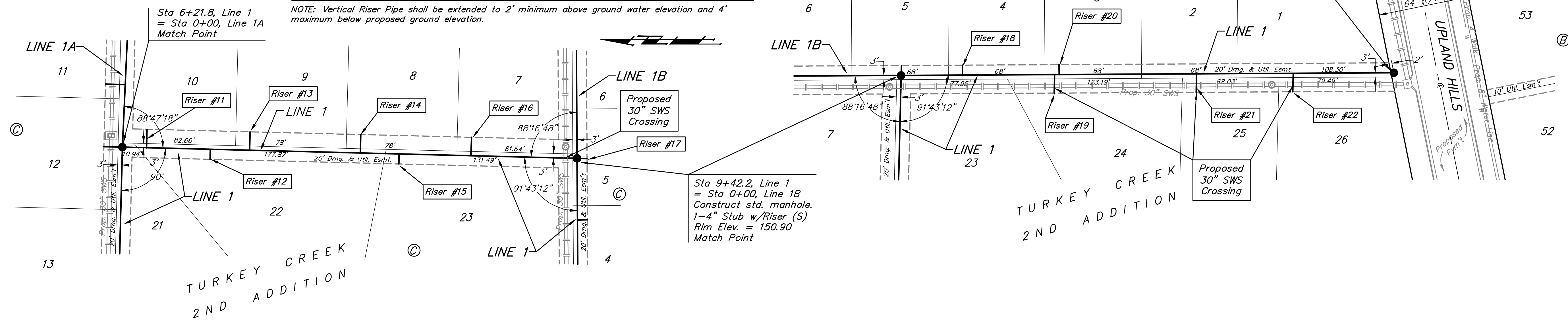
**BENCHMARKS:**  
 BM #1: 119th St. W. & Pawnee  
 City of Wichita Benchmark Disc.  
 NE corner of intersection. 40' E  
 and 30' N of centerline. 59.5' N of  
 power pole @ SE corner of  
 intersection. 156.8' NNE of  
 centerline of E concrete headwall on  
 culvert under 119th St. W.  
 Elev. = 148.68 (City Datum)  
 Elev. = 1336.08 (N.G.V.D.29)

BM #2: C.O.W. disk in curb at south  
 end of east curb return at  
 intersection of Jewell & Jewell Ct.  
 (Lots 48-60, Block E).  
 Elev. = 146.84 (City Datum)

**SEWER SERVICE TABLE**

NUMBER	TYPE	LOCATION			STATION \ DIRECTION	FOR INFORMATION ONLY	
		LOT NO.	BLOCK NO.	LINE NO.		APPROXIMATE LENGTH 4" PIPE	VERTICAL
11	8" X 4" Tee	10	C	1	6+39/Lt.	10'	13'
12	8" X 4" Tee	22	C	1	6+84/Rt.	10'	7'
13	8" X 4" Tee	9	C	1	7+12/Lt.	10.5'	13'
14	8" X 4" Tee	8	C	1	7+90/Lt.	11'	13'
15	8" X 4" Tee	23	C	1	8+17/Rt.	11'	7'
16	8" X 4" Tee	7	C	1	8+68/Lt.	10'	13'
17	4" Stub w/Riser	5	C	1	9+42.2/Lt.	9'	7'
18	8" X 4" Tee	4	C	1	9+86/Lt.	9'	7'
19	8" X 4" Tee	24	C	1	10+50/Rt.	8.5'	13'
20	8" X 4" Tee	3	C	1	10+54/Lt.	8.5'	7'
21	8" X 4" Tee	25	C	1	11+50/Rt.	7.0'	13'
22	8" X 4" Tee	26	C	1	12+18/Rt.	6.0'	13'

NOTE: Vertical Riser Pipe shall be extended to 2' minimum above ground water elevation and 4' maximum below proposed ground elevation.



<b>Baughman</b>		Turkey Creek 2nd Addition - Phase III	
<b>LINE 1</b>		Sanitary Sewer Improvements	
Baughman Company, P.A. 315 Ellis St. Wichita, KS 67211 P 316-262-7271 F 316-262-0149 ENGINEERING   SURVEYING   PLANNING   LANDSCAPE ARCHITECTURE			
PROJECT NUMBER 468-83820	DESIGN MWS/JAK	DRAWN TMS	DATE 12/06/06
REVISIONS:	SCALE NOTED SHEET		
			<b>3 OF 17</b>
F:\Eng\Turkey Creek 2nd\Phase3\SS2			06-05-E546