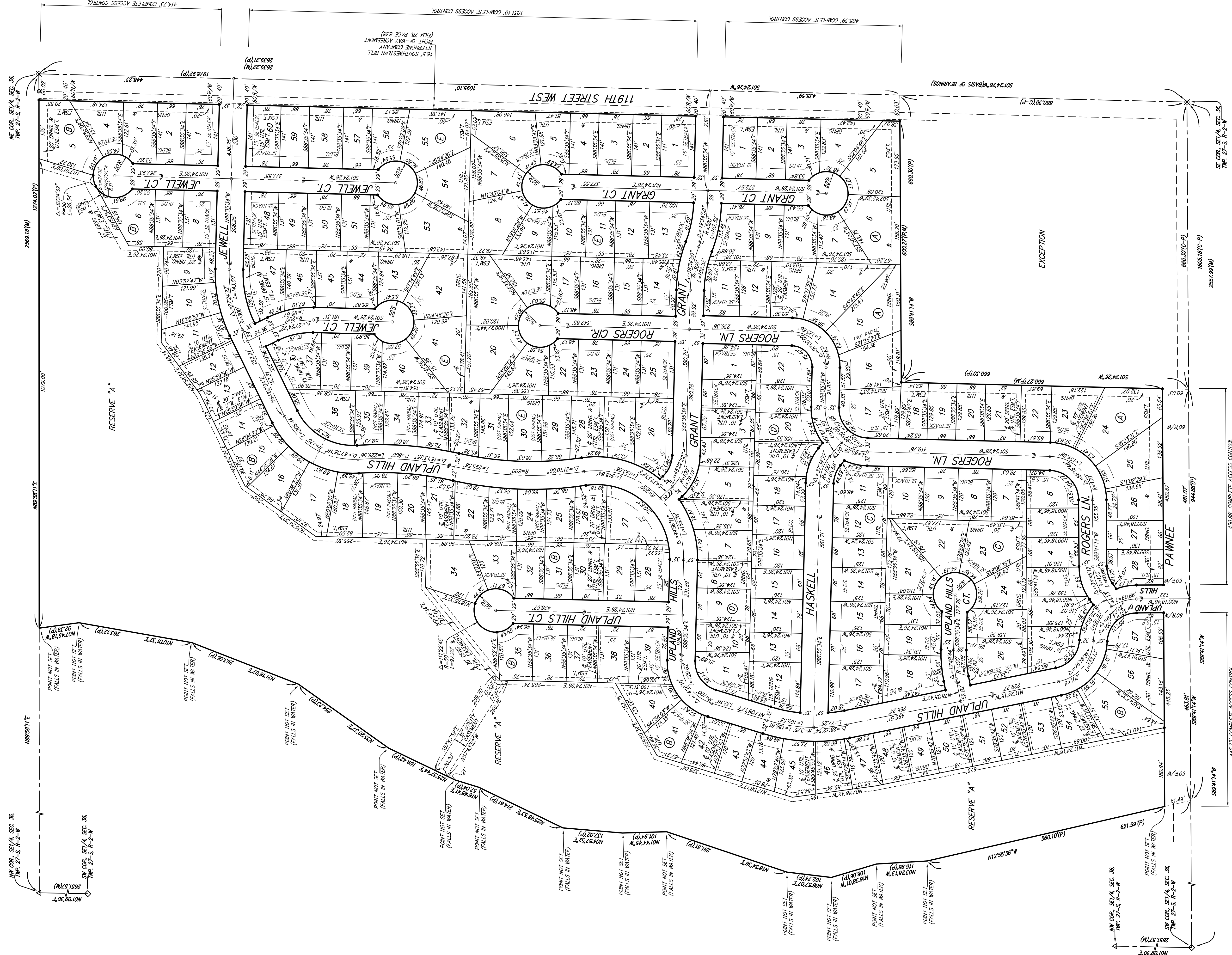


TURKEY CREEK 2ND ADDITION WICHITA, SEDGWICK COUNTY, KANSAS



LOT	BLOCK	ELEVATION
5-12	B	1328.1
15-19	B	1328.3
20,21,34	B	1328.4
35	B	1329.4
36	B	1329.9
37	B	1330.4
38	B	1330.9
39-41	B	1331.4
42-44	B	1331.6
45-47	B	1332.1
48-50	B	1332.4
51-53	B	1332.6
54-57	B	1332.9

MINIMUM BUILDING PAD ELEVATIONS FOR LOWEST OPENING TO THE STRUCTURES

BENCHMARK:
117TH ST. W. & PAWNEE
CITY OF WICHITA BENCHMARK DISC
CITY OF WICHITA INTERSECTION
40.00' E. OF C.
30.00' N. OF C.
59.50' N. OF P.P. AT SE. COR.
HEADWALL ON COLLECTOR
UNDER 19TH ST. W.
ELEV. = (PER CITY RECORD)



- = #4 REBAR W/ "BAUGHMAN" CAP (SET)
 - = BALT OVER STONE (FOUND)
 - ◇ = #4 REBAR W/ ARMSTRONG CAP (FOUND)
 - △ = 1" IRON OVER STONE (FOUND)
- (M) = MEASURED
(P) = PLATED
(C-P) = CALCULATED PER PLATED INFO.

NOTE:
A master grading plan for drainage has been developed for this subdivision. The City Engineer will review the master grading plan and the proposed site-specific grading plan with the master plan to establish grades or curbs. The City Engineer will issue a final approval of the City Engineer of the City of Wichita, Kansas. No obstructions which impede the flow of this drainage system be allowed.