

# PRIVATE WATER MAIN EXTENSION TO SERVE ANDOVER HIGH SCHOOL CITY OF ANDOVER, KANSAS PRIVATE PROJECT NUMBER 1290 PPW (607853)

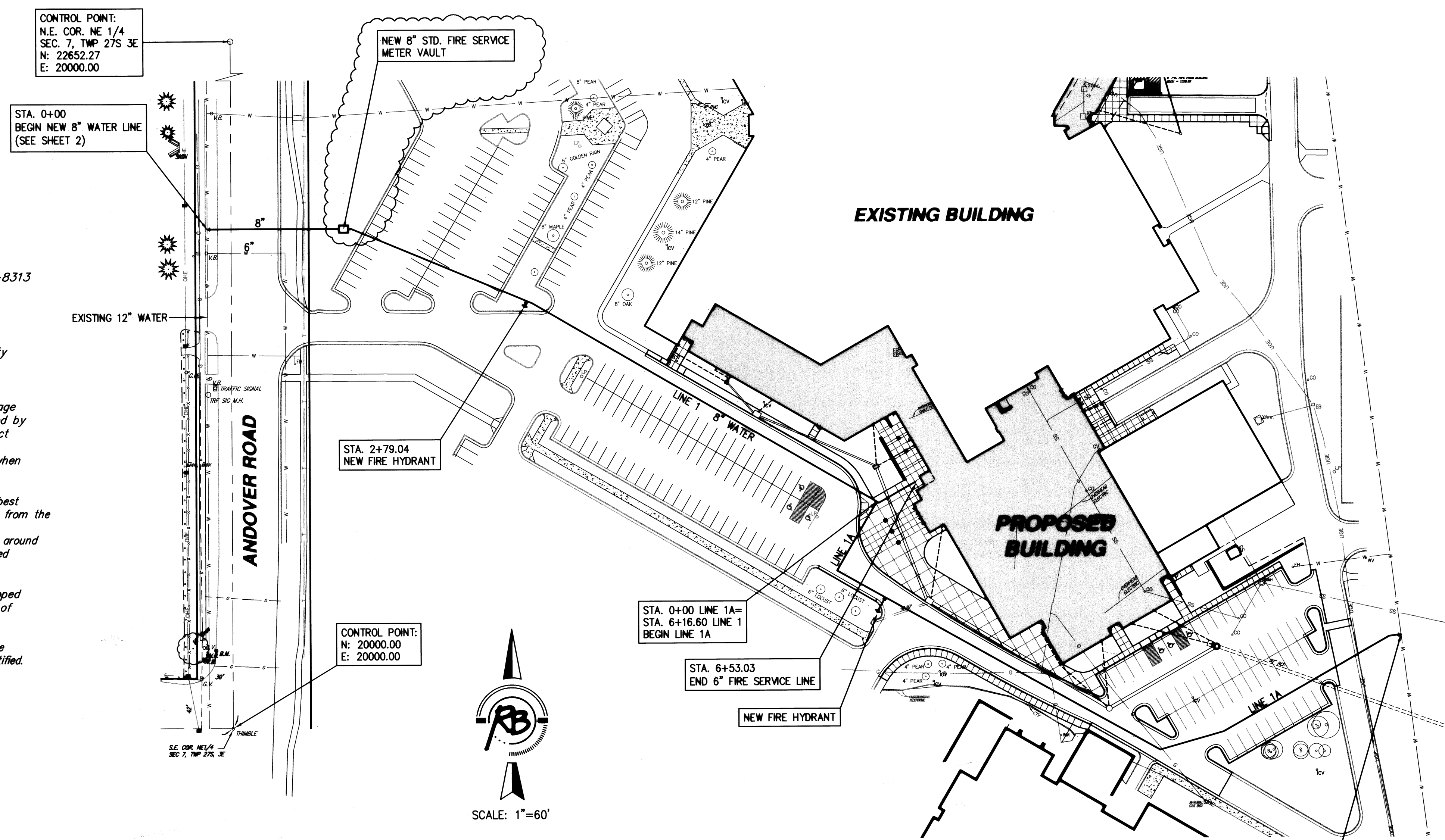
### GENERAL NOTES

1. Contractor will be required to provide a minimum notice of 48 hours to utility companies prior to starting any excavation as follows:  

Kansas One-Call	687-2470
-----------------	----------

The Contractor must notify the following in case of an emergency:

Cox Communications	262-4270
Kansas Gas Service	832-3126
Westar Energy	261-6512
Southwestern Bell Telephone Company	1-800-286-8313
City of Wichita Water Department	268-4555
2. All water mains and appurtenances shall be installed in accordance with City of Wichita, Kansas, Standard Specifications for the Construction of City Projects, and current policy on construction of public works improvements by private contract.
3. Opening and closing water valves shall be done slowly to prevent damage to the water distribution system from water hammer. All valves closed by the Contractor must be reopened as new construction permits. Project inspector must ascertain that any valve closed by the Contractor is reopened. Contractor will be permitted to operate water valves only when the project inspector assigned to the project is present.
4. Existing utilities and their location, as shown on the plans, represent the best information obtainable for design. Location information has been obtained from the various utility companies and is either from company record drawings or company-provided field locations. The Contractor will be required to work around existing utilities within the right-of-way which do not conflict with proposed construction.
5. The Contractor shall give all property owners and/or tenants of developed property directly abutting the construction of this project a minimum of ten (10) days advance notice prior to start of construction.
6. No work shall begin on this project before required bonds are submitted to the City of Wichita, or the City of Andover, and the project inspector has been notified.
7. Two-way traffic shall be maintained on Andover Road at all times.
8. All new water line under pavement to be directional drilled, except where noted otherwise on plan.



### INDEX OF SHEETS

1. INDEX SHEET
2. WATER PLAN & PROFILE
3. WATER PLAN & PROFILE
4. WATER PLAN & PROFILE
5. WATER PLAN & PROFILE
6. FIRE HYDRANT ASSEMBLY DETAILS
7. STANDARD VAULT DETAILS AND METER ASSEMBLIES

### BENCHMARKS

BENCH MARK: CHISELED "□" ON THE TOP OF CURB, N.W. CORNER OF ALLISON ST. AND ANDOVER ROAD ON THE NORTH CURB RETURN ELEV.= 1345.77 (M.S.L.)

ON-SITE BENCH MARK: CHISELED "□" AT THE N.E. CORNER OF A CURB INLET ON THE EAST SIDE OF A SCHOOL DRIVE, 300 FEET SOUTHEAST OF THE SOUTHERLY MOST CORNER OF THE HIGHSCHOOL SHOP BUILDING ELEV.= 1343.28 (M.S.L.)

**APPROVED AS NOTED  
BY CITY ENGINEER OF WICHITA  
BY WICHITA FIRE DEPARTMENT  
BY WICHITA PUBLIC WORKS**

Public Works: *[Signature]* 2/2/07

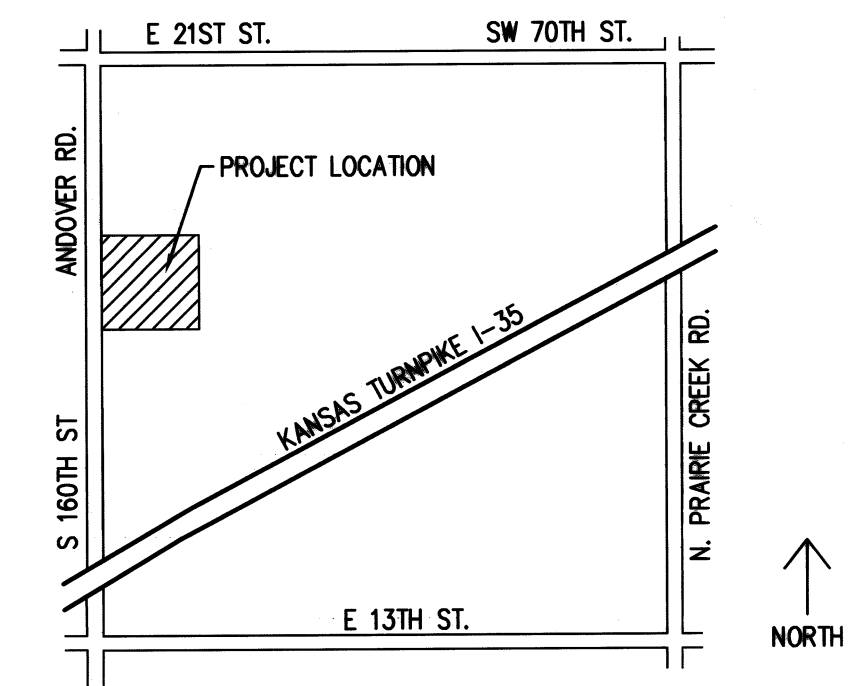
Water & Sewer: *[Signature]* 2/2/07

Fire Prot. Line: \_\_\_\_\_

**NOTE TO CONTRACTORS**

**Public Property:** Inspection and testing for the waterline is to be provided by a Licensed Consulting Engineering Firm under contract with the Owner/Developer. Said inspection to be in accordance with the City of Wichita standard construction engineering practices and certified by a Licensed Professional Engineer. No work shall be performed in dedicated easements or public right-of-way by the Contractor without such inspection nor shall any work be commenced without written authorization by the City Engineer. All Construction and Materials shall comply with the City of Wichita Specifications and Standards (on file and available in the City Engineer's Office).

**Private Property:** Inspection and testing for the fire protection line is to be performed by a City of Wichita certified fire protection contractor in accordance with the fire codes as adopted by the City of Wichita. All materials and construction practices for the fire protection line shall comply with the fire codes as adopted by the City of Wichita (available from the City of Wichita Fire Department). The Contractor shall not commence work without notification to and approval of the Wichita Fire Department.



**VICINITY MAP**  
NOT TO SCALE

**AS-BUILT**  
9/18/07  
Date: K.E. Miller  
*[Signature]*



**Ruggles & Bohm, P.A.**  
Engineering, Surveying, Land Planning  
924 North Main (316) 264-8008  
Wichita, Kansas 67203 (316) 264-4621 fax  
www.rbkansas.com E-mail: info@rbkansas.com