

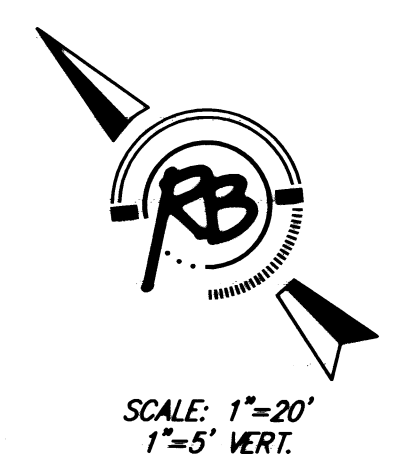
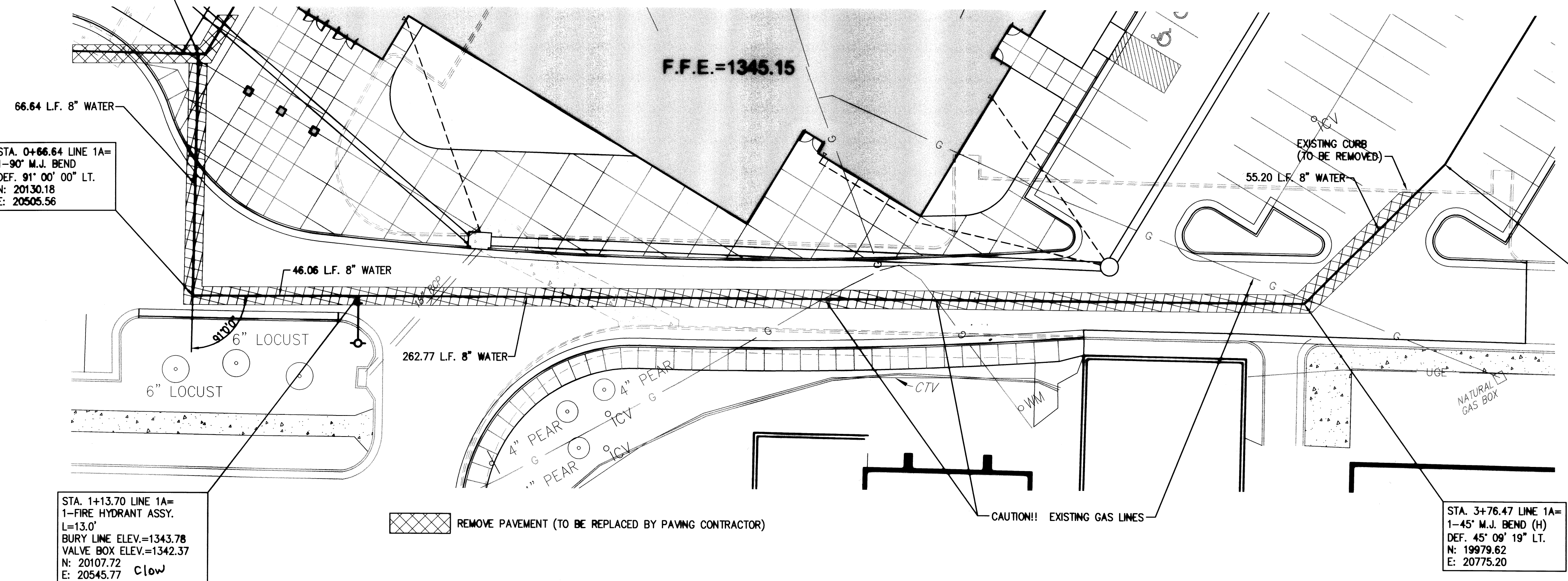
STA. 0+00 LINE 1A=
STA. 6+16.60 LINE 1
N: 20187.79
E: 20539.05

STA. 0+66.64 LINE 1A=
1-90° M.J. BEND
DEF. 91° 00' 00" LT.
N: 20130.18
E: 20505.56

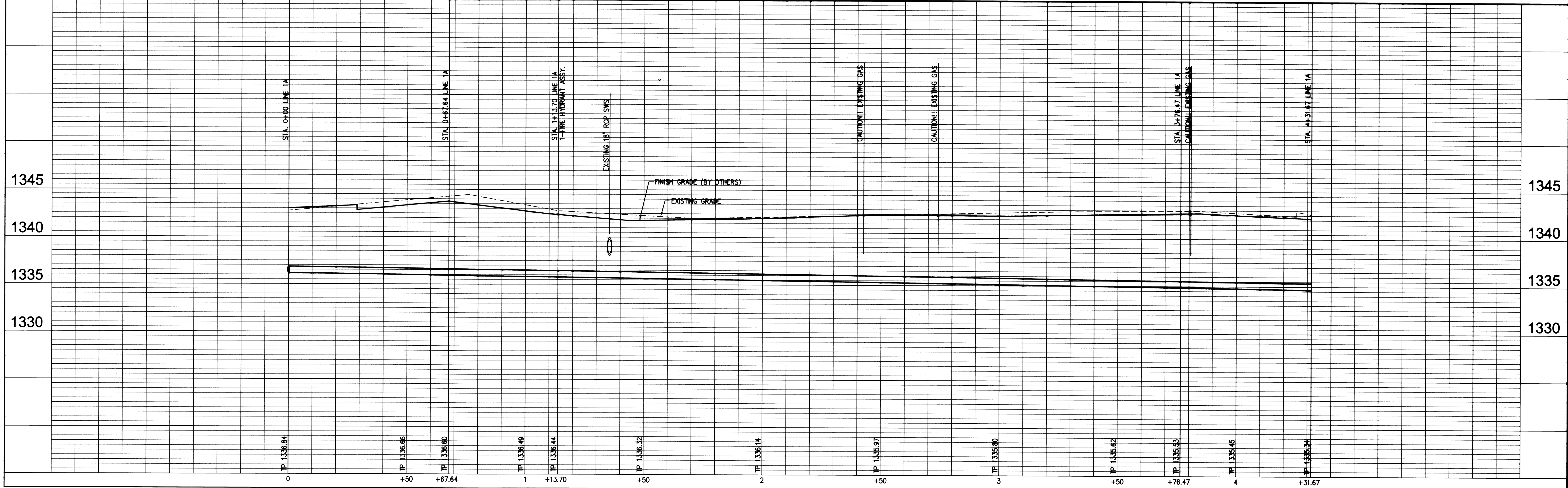
STA. 1+13.70 LINE 1A=
1-FIRE HYDRANT ASSY.
L=13.0'
BURY LINE ELEV.=1343.78
VALVE BOX ELEV.=1342.37
N: 20107.72
E: 20545.77 C low

STA. 4+31.67 LINE 1A=
1-11.25° M.J. BEND (H)
DEF. 13° 50' 41" LT.
N: 19994.81
E: 20628.26

STA. 3+76.47 LINE 1A=
1-45° M.J. BEND (H)
DEF. 45° 08' 19" LT.
N: 19979.62
E: 20775.20



LINE 1A



Ruggles & Bohm, P.A.
Engineering, Surveying, Land Planning
1920 North Main Street, Suite 200
Andover, Kansas 66001
Phone: 785-842-4000
Fax: 785-842-4001
Email: info@rugglesandbohm.com

REVISION	REVIEW
DRAWN EJB	DATE Feb. 28, 2007
DESIGN TOR	UTILITY
PROJECT NUMBER 1290 PPW	ENGINEERING BASE (SWS)

**ANDOVER HIGHSCHOOL
WATER PLAN & PROFILE
ANDOVER, KANSAS**

RB JOB
2994E
SHEET
4
7