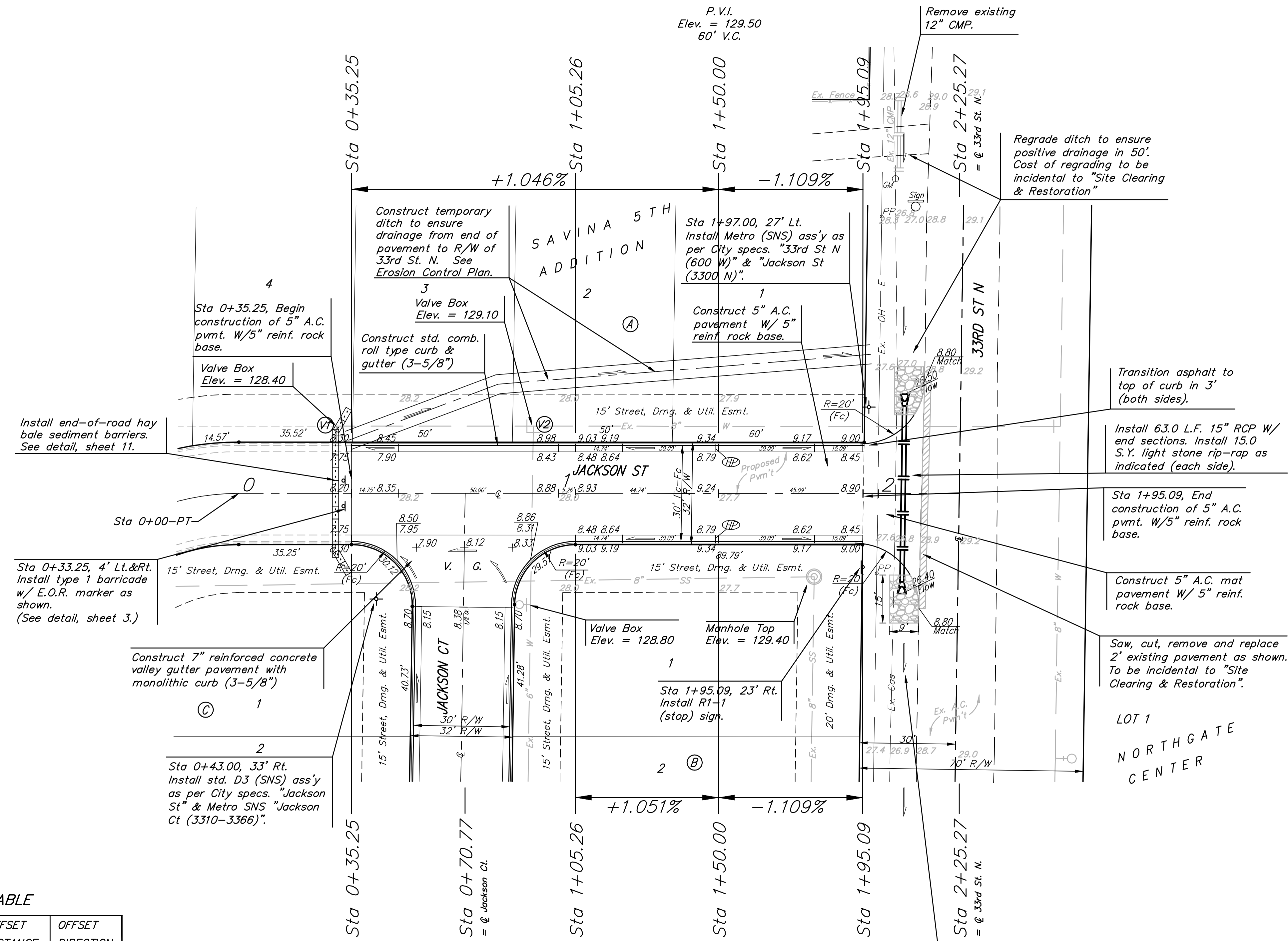


BENCHMARK:
 BM #1: ARKANSAS AND 33RD ST. N.
 C.O.W. BENCHMARK
 32.00 FT SOUTH OF CENTERLINE OF
 33RD ST. GOING EAST
 22.00 FT EAST OF CENTERLINE OF
 ARKANSAS
 ELEV= 1317.21 (NGVD 29)
 ELEV= 129.81 (CITY DATUM)

BM #2: C.O.W. DISK NE BRIDGE
 HEADWALL 33RD AND DRAINAGE
 CANAL
 ELEV= 1320.98 (NGVD29)
 ELEV= 133.58 (CITY DATUM)

Scale: 1" = 20'
 • = Iron



WATER VALVE LOCATION TABLE

VALVE NUMBER	STREET	BASELINE STATION	OFFSET DISTANCE	OFFSET DIRECTION
V1	Jackson St.	0+30.60	21'	Lt.
V2	Jackson St.	0+92.09	21'	Lt.
V3	Jackson Ct.	0+34.79	21'	Lt.
V4	Jackson Ct.	3+81.00	41'	Lt.

Paving contractor will be responsible to operate all water valves on the project, in the presence of the inspector, to ensure accessibility to the valves, and that all valves are left in the "ON" position when the project is completed.

NOTE: ROLL TYPE CURB & GUTTER TO BE CONSTRUCTED ON THE PAVEMENT SHOWN ON THIS SHEET. TOP OF CURB ELEVATIONS ARE GIVEN FOR FULL HEIGHT CURB.

Baughman SAVINA 5TH ADDITION - PH. I
JACKSON ST.
 STA 0+35.25 TO STA 2+25.27

PROJECT NUMBER: 181 PFP (607879)
 DESIGN: ATD
 DRAWN: TMS
 APPROVED: [Signature]
 DATE: 05/07
 SCALE: Noted
 SHEET: 5 OF 18

REVISIONS:

Savina5th\Phase1\Set1 07-05-E802