

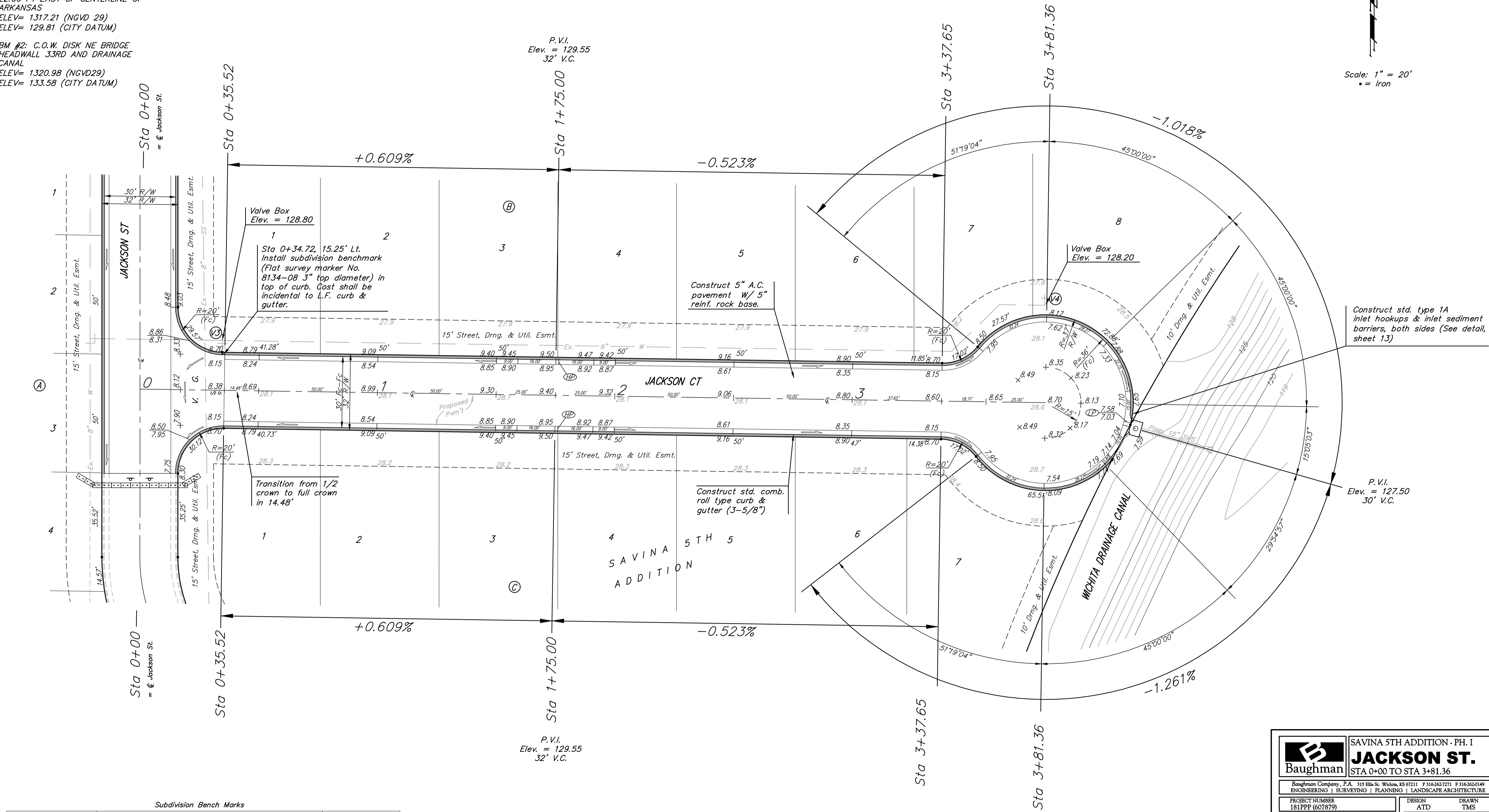
BENCHMARK:
 BM #1: ARKANSAS AND 33RD ST. N.
 C.O.W. BENCHMARK
 32.00 FT SOUTH OF CENTERLINE OF
 33RD ST. GOING EAST
 22.00 FT EAST OF CENTERLINE OF
 ARKANSAS
 ELEV= 1317.21 (NGVD 29)
 ELEV= 129.81 (CITY DATUM)

BM #2: C.O.W. DISK NE BRIDGE
 HEADWALL 33RD AND DRAINAGE
 CANAL
 ELEV= 1320.98 (NGVD29)
 ELEV= 133.58 (CITY DATUM)

P.V.I.
 Elev. = 129.55
 32' V.C.

P.V.I.
 Elev. = 129.55
 32' V.C.

Scale: 1" = 20'
 • = Iron



Subdivision Bench Marks

Street & Station	Location Description	Elevation
Jackson Ct. 0+34.72, 15.25' Lt.	Adjacent to Fire Hydrant at S. End of S. Curb Return of Jackson St. & Jackson Ct.	

NOTE:
 ROLL TYPE CURB & GUTTER TO BE CONSTRUCTED ON THE PAVEMENT SHOWN ON THIS SHEET. TOP OF CURB ELEVATIONS ARE GIVEN FOR FULL HEIGHT CURB.

	SAVINA 5TH ADDITION - PH. I JACKSON ST. STA 0+00 TO STA 3+81.36	
	<small>Baughman Company, P.A. 315 Ella St. Wichita, KS 67211 P 316-262-7271 F 316-262-0149 ENGINEERING SURVEYING PLANNING LANDSCAPE ARCHITECTURE</small>	
PROJECT NUMBER 181PPP (607879)	DESIGN ATD	DRAWN TMS
REVISIONS:	APPROVED	DATE 05/07
SCALE Noted		SHEET 6 OF 18
<small>Savina5th\Phase1\Set2</small>		<small>07-05-E802</small>