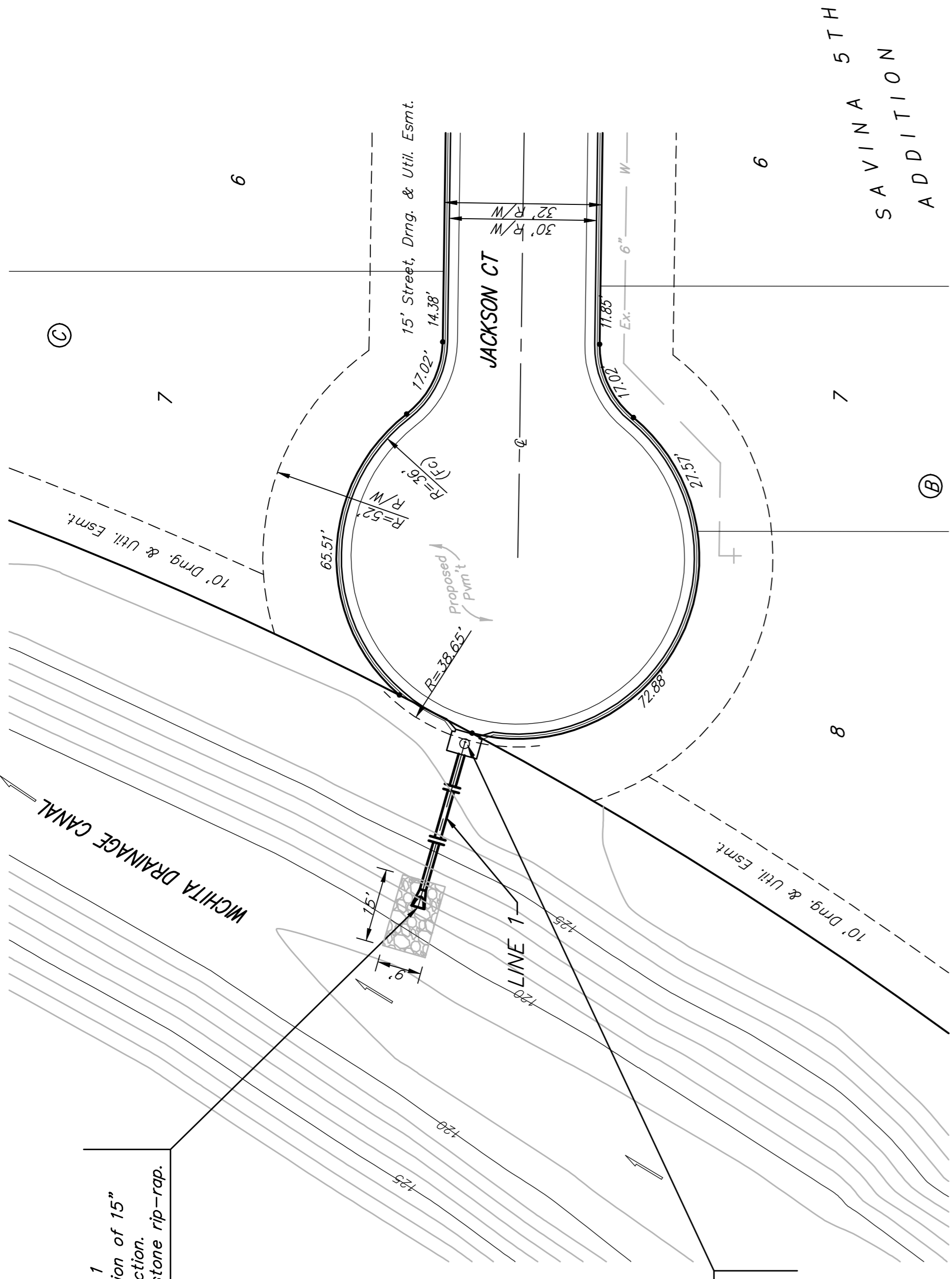


BENCHMARK:  
 BM #1: ARKANSAS AND 33RD ST. N.  
 C.O.W. BENCHMARK  
 32.00 FT SOUTH OF CENTERLINE OF  
 33RD ST. GOING EAST  
 22.00 FT EAST OF CENTERLINE OF  
 ARKANSAS  
 ELEV= 1317.21 (NGVD 29)  
 ELEV= 129.81 (CITY DATUM)

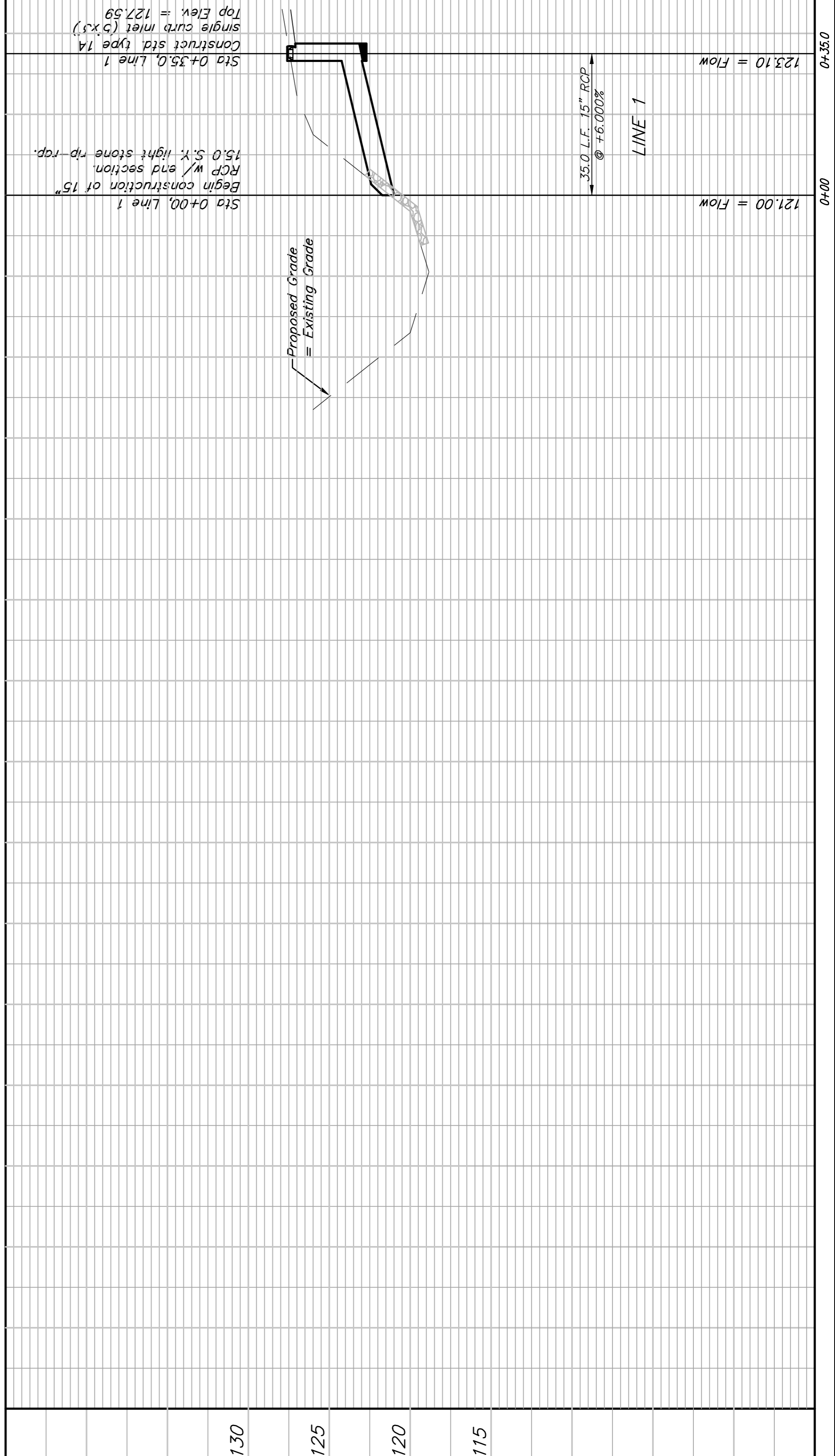
BM #2: C.O.W. DISK NE BRIDGE  
 HEADWALL 33RD AND DRAINAGE  
 CANAL  
 ELEV= 1320.98 (NGVD29)  
 ELEV= 133.58 (CITY DATUM)

Sta 0+00, Line 1  
 Begin construction of 15"  
 RCP w/ end section.  
 15.0 S.Y. light stone rip-rap.

Sta 0+35.0, Line 1  
 Construct std. type 1A  
 single curb inlet (5'x3')  
 Top Elev. = 127.59



Scale: 1" = 20' Horizontal  
 1" = 5' Vertical  
 • = Iron



130  
 125  
 120  
 115

0+00 0+35.0

**Baughman**  
 ENGINEERING | SURVEYING | PLANNING | LANDSCAPE ARCHITECTURE

PROJECT NUMBER  
 181PPP (607879)

DESIGN  
 ATD  
 TMS

APPROVED  
 DATE  
 06/07

REVISIONS:

SAVINA 5TH ADDITION - PH. 1

**LINE 1**

STORM WATER SEWER IMPROVEMENTS

315 Elm St., Wichita, KS 67211 P 316.262.7771 F 316.262.0149

SCALE  
 Noted

SHEET  
**7 OF 18**

Savina5th SWSI

07-05-E802