



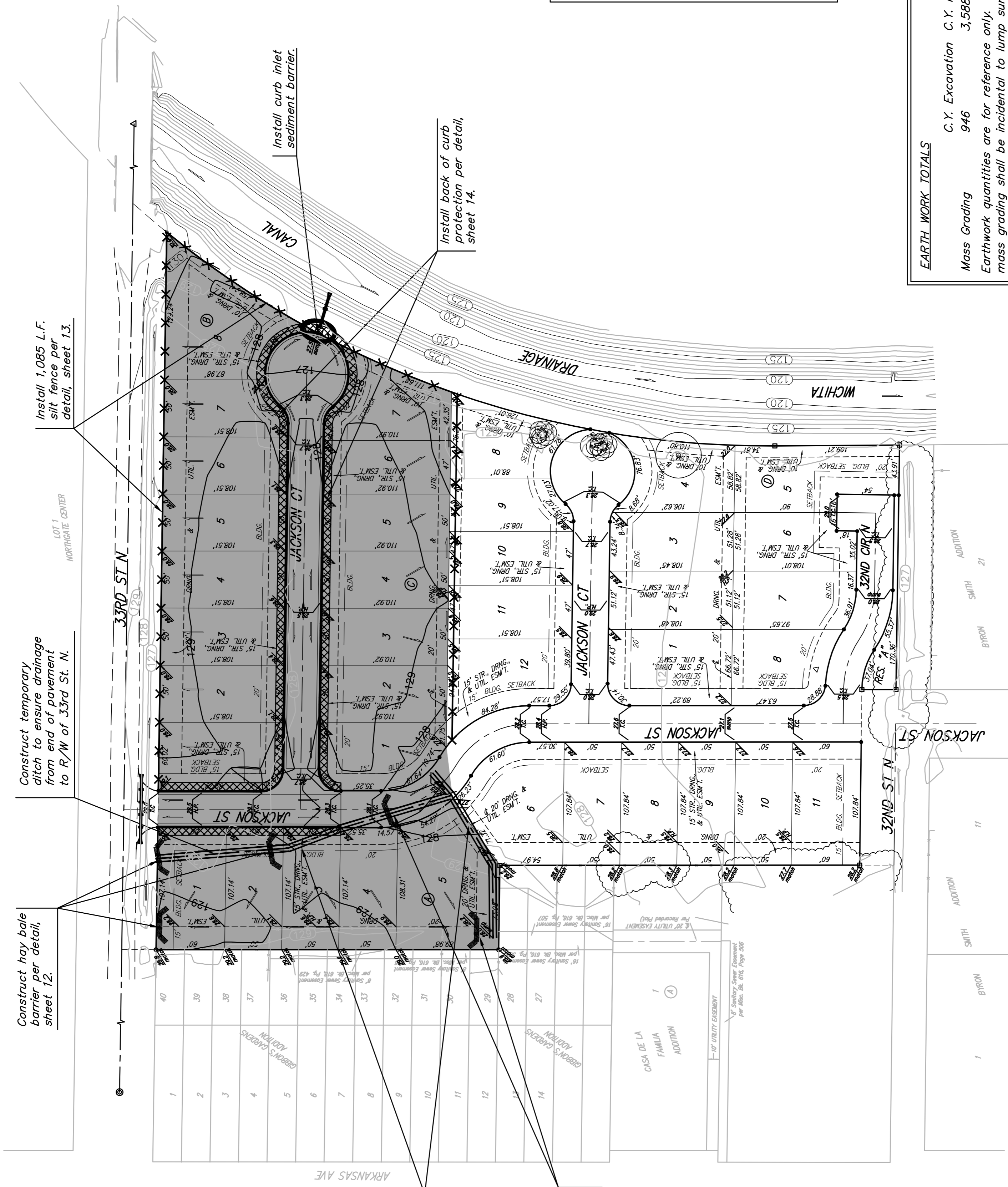
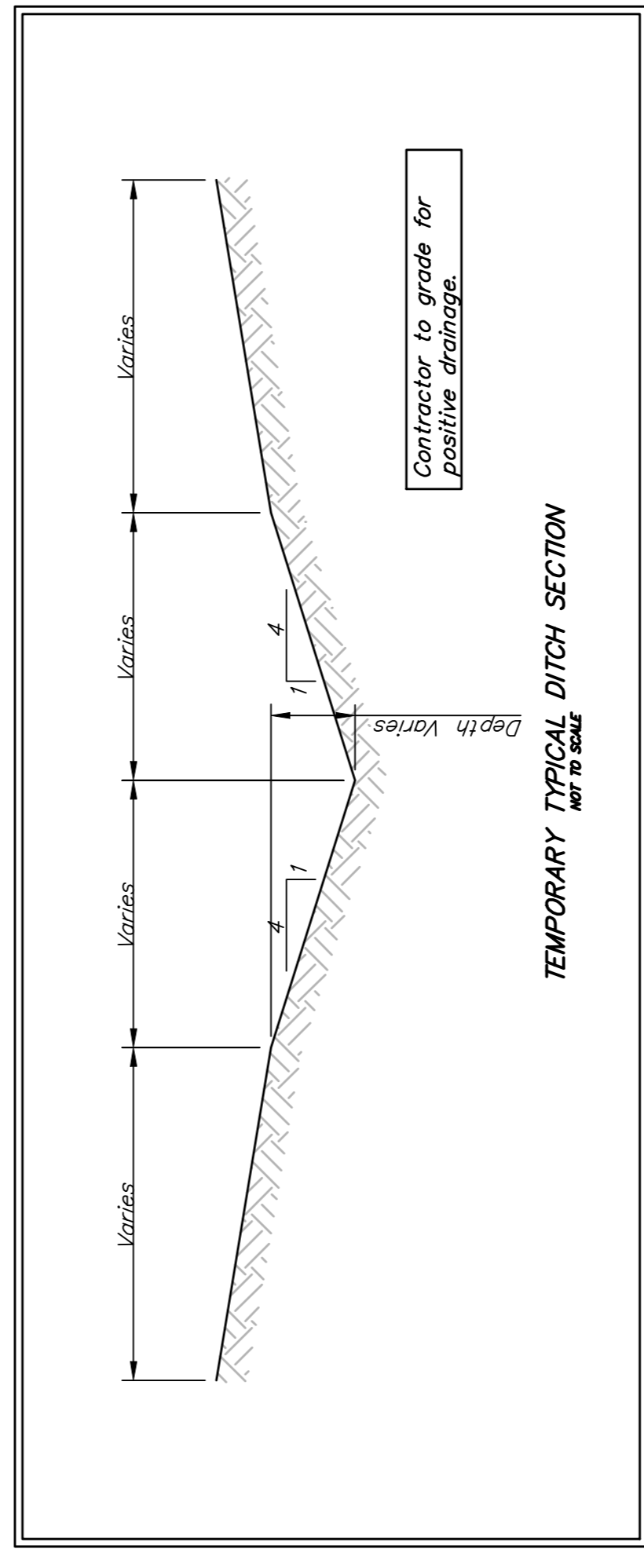
Scale: 1" = 60'

EROSION CONTROL PLAN
(Installation Details Found in the SPM2 Plan)

LEGEND

- DROP INLET PROTECTION
- CURB INLET PROTECTION
- DITCH CHECKS
- SILT FENCING
- CUT-OFF TRENCH
- BACK OF CURB PROTECTION
- EROSION CONTROL MAT
- TEMPORARY DITCH

NO SCALE



EARTH WORK TOTALS

C.Y. Excavation 946
 C.Y. Fill 3,588
 Mass Grading 946

Earthwork quantities are for reference only. All cost associated with mass grading shall be incidental to lump sum bid item "Mass Grading".

- Contractor to strip top 3" of soil within street R/W before mass grading and stockpile.
- Compaction of 95% shall be obtained in all street R/W's, 90% in all other areas.
- It shall be the Contractor's responsibility to protect the sanitary sewer and water distribution system during mass grading. Any damage done to these systems by Contractor or subcontractor shall be repaired at no additional cost to the project.
- All trees shall be protected during construction not under proposed pavement are to be seeded as follows:
 Seed: - Rye Grass (PLS) - 5#/1000 Sq. Ft. and
 Kansas Premium Fescue Blend - 5#/1000 Sq. Ft.
 Cost of seeding shall be incidental to "Project Seeding".

Maintain one construction entrance onto existing paved roadway per detail, sheet 15.

BAUGHMAN
SAVINA 5TH ADDITION - PH. I
MASS GRADING & EROSION CONTROL PLAN
STREET IMPROVEMENTS

Engineering Company, P.A., 15 Elm St., Waltham, MA 02451
 PROJECT NUMBER: 181FFP (07/87)
 DESIGN: ATD
 DRAWN: TMS
 APPROVED: [Signature]
 DATE: 06/07

REVISIONS:
 SCALE: Noted
 SHEET: 9 OF 18

07-03-5802
 SavinaSty.Mas

