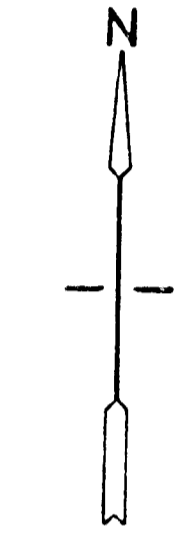


PRELIMINARY PLAT  
of  
**GARY DUNN ADDITION**  
TO WICHITA, KANSAS

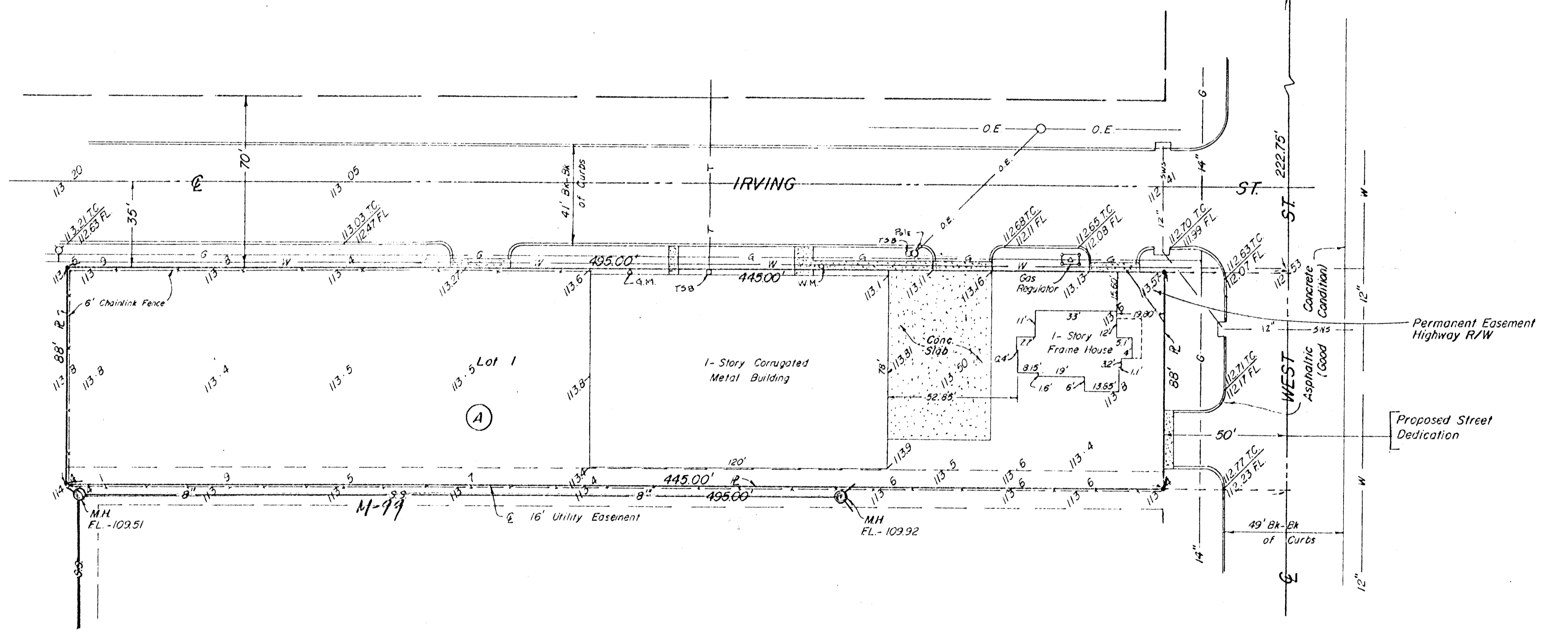
LEGAL DESCRIPTION

A TRACT BEGINNING 1 1/2 RODS SOUTH OF THE NORTHEAST CORNER OF THE SOUTHEAST QUARTER (SE 1/4) OF SECTION 26, TOWNSHIP 27 SOUTH, RANGE 1 WEST, THENCE SOUTH 88 FEET, THENCE WEST 30 RODS, THENCE NORTH 88 FEET, THENCE EAST 30 RODS TO THE PLACE OF BEGINNING.

Thimble -  
M.E. Cor, S.E. 1/4, Sec. 26,  
T. 27S, R. 1W of the 6th PM,  
Sedgwick Co., Ks.



- 1" = 30'
- = Iron
  - W = Water Main
  - WM = Water Meter
  - F.H. = Fire Hydrant
  - G = Gas Main
  - G.M. = Gas Meter
  - O.E. = Overhead Electric
  - T = Underground Telephone
  - SS = Sanitary Sewer
  - SWS = Storm Water Sewer
  - M.H. = Manhole
  - T.C. = Top of Curb
  - FL = Frow Line
  - T.S.B. = Telephone Splice Box
  - ▭ = Concrete



Benchmark:  
City Standard Disc. 43' W. and 34' N.  
of Irving and West Street.  
Elev. 113.096 City Datum

*Norm C. Moehring*  
MOEHRING & ASSOCIATES  
CONSULTING ENGINEERS  
WICHITA  
April 26, 1984  
# 84-036-SD

M-97  
B-154