

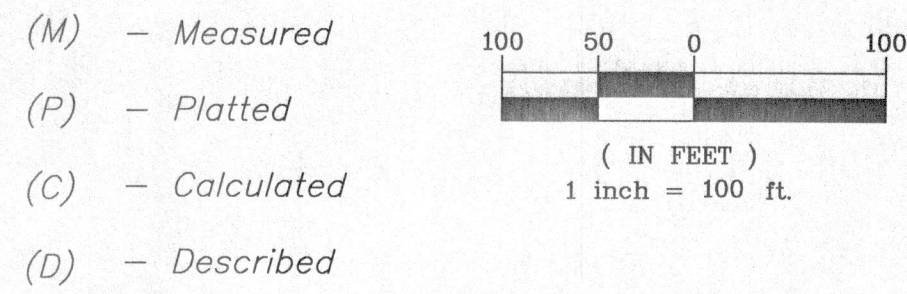
Makers Park Addition

a Replat of Glenville East Addition

Sedgwick County, Kansas

Part of the SE 1/4, of Section 18, Township 28 South, Range 2 East of the 6th P.M.

LEGEND



- (M) - Measured
- (P) - Platted
- (C) - Calculated
- (D) - Described
- C.A.C - Complete Access Control
- ⊕ - 1/2" Rebar w/ KEMPA Cap (Set)
- ⊗ - 5/8" Rebar w/ MKEC Cap (Found)
- - 5/8" Rebar w/ Armstrong Cap (Found)
- ⊕ - 3/4" Rebar (Found)
- △ - Found Stone (Peak)
- ⊙ - Calculated Point

Benchmarks:

BM1:
Top of Cap 3/4" Rebar, Section Corner,
NE Corner of the SE Quarter of Section 18,
Township 28S, Range 2E

Elevation = 1383.75 (NAVD88)

BM2:
Top of Magnetic Nail, edge of asphalt,
approximately 42ft east of SE Property
Corner.

Elevation = 1383.65 (NAVD88)

Minimum Pad Elevation		
Lot	Block	Elev NAVD 88
11	A	1357.0
12	A	1357.0

State of Kansas)
County of Sedgwick) SS

I, Keith Severns, a licensed land surveyor of the State of Kansas, do hereby certify that the following described tract of land was surveyed on the 28th day of January, 2025 and the accompanying final plat prepared and that all the monuments shown herein actually exist and their positions are correctly shown to the best of my knowledge and belief:

LEGAL DESCRIPTION:

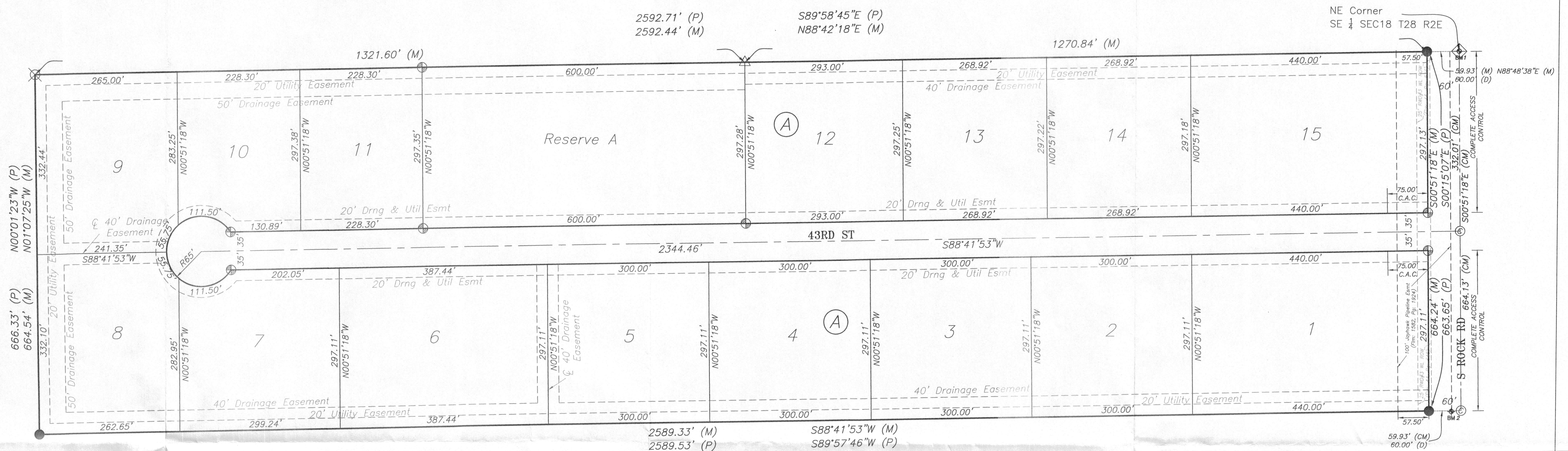
Lot 1, Block 1 Glenville East Addition to Sedgwick County, Kansas.

All existing public easements and rights-of-way within said tract are hereby vacated by virtue of KSA 12-512b as amended.

Keith Severns, P.S. #1355 Date

Reviewed in accordance with K.S.A. 58-2005
on this _____ day of _____, 2025.

Tricia L. Robello, P.S. #1246
Deputy County Surveyor
Sedgwick County, Kansas



State of Kansas)
County of Sedgwick) SS

Know all men by these presents, that we, the undersigned, have caused the land described in the surveyor's certificate to be platted into Lots, a Block, a Reserve, and Streets to be known as Makers Park Addition, Sedgwick County, Kansas. Any street dedications shown are dedicated to the appropriate governing body. The drainage easements are hereby granted to the public as indicated for drainage purposes. The utility easements are hereby granted to the public as indicated for the construction and maintenance of all public utilities. The drainage and utility easements are hereby granted to the public as indicated for drainage purposes and for the construction and maintenance of all public utilities. A master drainage plan has been developed for this plat. All drainage easements, rights-of-way, and reserves shall remain at established grades (unless modified for the approval of the applicable City or County Engineer) and shall be unobstructed to allow for the conveyance of stormwater in accordance with the Stormwater Manual. No sign, light poles, private drainage systems, berms, walls, masonry trash enclosures or other structures shall be located within public utility easements unless permitted by the City of Wichita Department of Engineering and that they do not inhibit the conveyance of surface drainage. Reserve "A" is hereby platted for drainage, drainage structures, detention pond, open space, landscaping, and utilities confined to easements. For Reserve A being platted for drainage purposes, the required covenant that provides for ownership and maintenance of the reserves, shall grant to the appropriate governing body the authority to maintain the drainage reserves in the event the owner(s) fail to do so. The covenant shall provide for the cost of such maintenance to be charged back to the owner(s) by the governing body. Compliance with any platted restrictions and applicable restrictive covenants affecting said Reserves shall be binding on any owners, successors, heirs, or assigns. The access controls are hereby granted to the appropriate governing body as shown hereon. Buildings shall be constructed at or above the specified minimum pad elevation. The land contained herein is held and shall be conveyed subject to any applicable restrictions, reservations and covenants now on file or hereafter filed in the Office of the Register of Deeds of Sedgwick County, Kansas.

By: Brock Beran, Managing Member Date
Makers Park LLC

State of Kansas)
County of Sedgwick) SS

This instrument was acknowledged before me on this _____ day _____ of 2025, by Brock Beran, Managing Member, Makers Park LLC.

_____, Notary Public

My commission expires: _____

We the undersigned, holders of a mortgage on the above described property, do hereby consent to this plat of Makers Park Addition, Sedgwick County, Kansas.

LEGACY BANK:

Rex Reynolds, Date
Executive Vice President
Legacy Bank

State of Kansas)
County of Sedgwick) SS

The foregoing instrument acknowledged before me, this _____ day of _____, 2025, by Rex Reynolds, Executive Vice President of Legacy Bank

_____, Notary Public

My commission expires: _____

State of Kansas)
City of Wichita) SS

This plat of Makers Park, Sedgwick County, Kansas, has been submitted to and approved by the Wichita-Sedgwick County Metropolitan Area Planning Commission, Wichita, Kansas. Dated this _____ day of _____, 2025.

Bryan K. Frye, Chair

Scott A. Wadle, Secretary

State of Kansas)
County of Sedgwick) SS

This plat approved and all dedications shown hereon accepted by the City Council of the City of Wichita, Kansas this _____ day of _____, 2025.

At the Direction of the City Council.

Lily Wu, Mayor

Paul Leeker, City Clerk

FINAL TRACING REC'D
RECEIVED JUN 08 2025

CITY HALL - ENGINEERING
MAIL STOP 1-71
Arceli Rosas
FOR YOUR FILES

State of Kansas)
County of Sedgwick) SS

This plat of Makers Park Addition, Sedgwick County, Kansas has been submitted to and approved by the Board of County Commissioners of Sedgwick County, Kansas. On this _____ day of _____, 2025.

Ryan Baty, Fourth District, Chairman

Attest: Kelly B. Arnold, County Clerk

Entered on transfer record this _____ day of _____, 2025.

Kelly B. Arnold, County Clerk

State of Kansas)
County of Sedgwick) SS

This is to certify that this instrument was filed for record in the Register of Deeds Office, at _____ on the _____ day of _____, 2025, and is duly recorded.

Tonya Buckingham, Register of Deeds

Kenly Zehring, Deputy

23324 / Makers Park Addition Prepared: 05/29/2025

KEMILLER
ENGINEERING PA
117 E. Lewis, Wichita, KS 67202 (316)264-0242