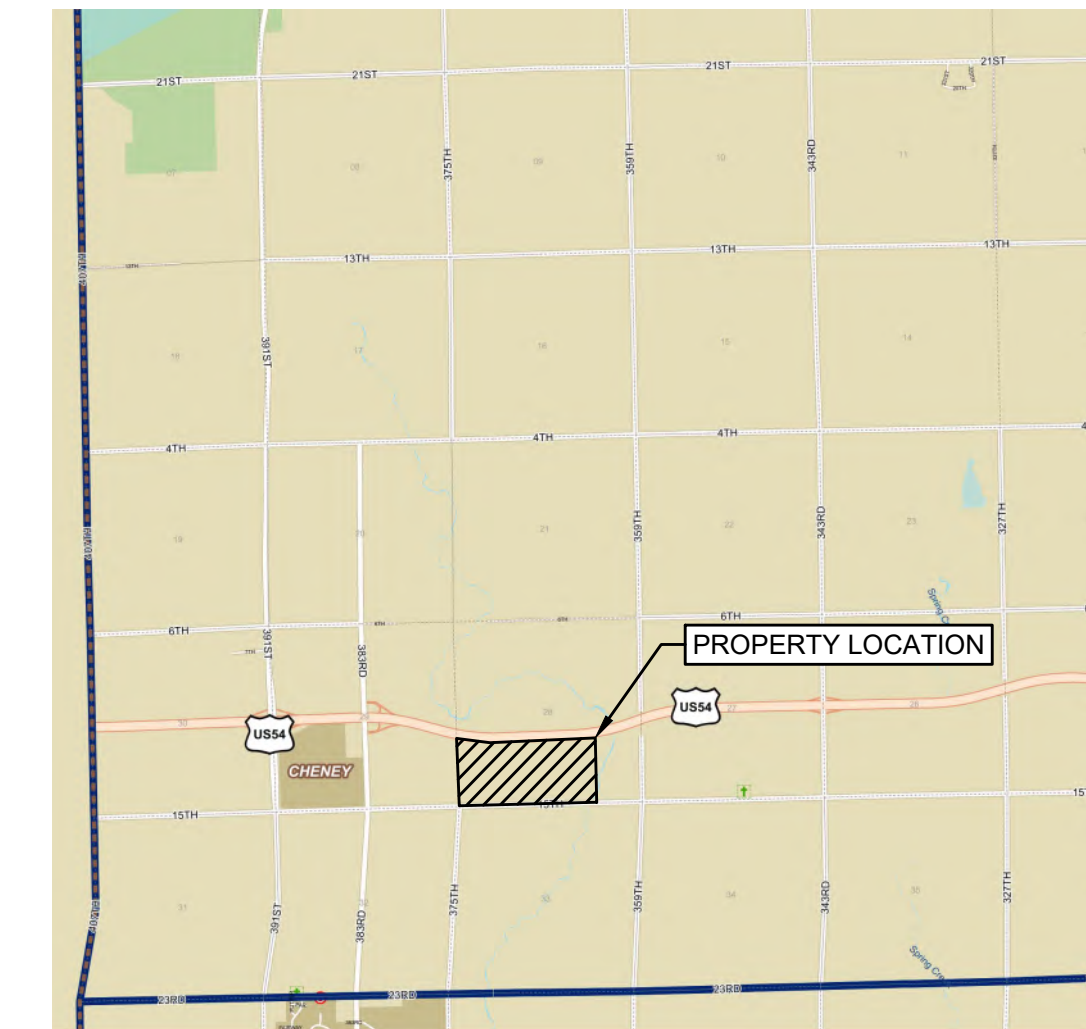
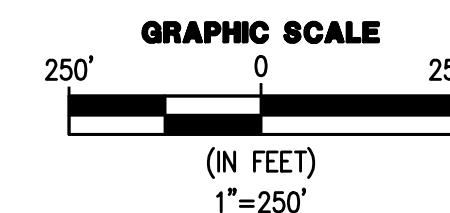
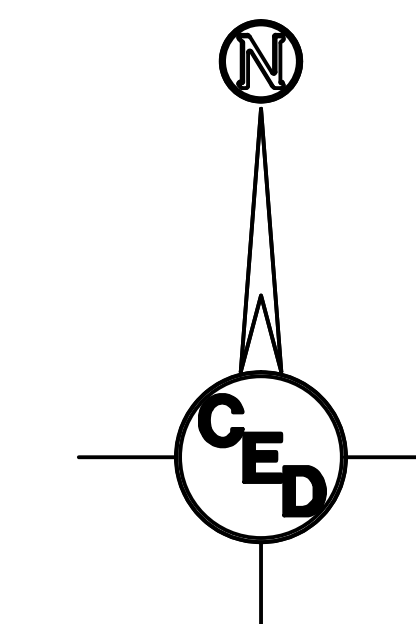
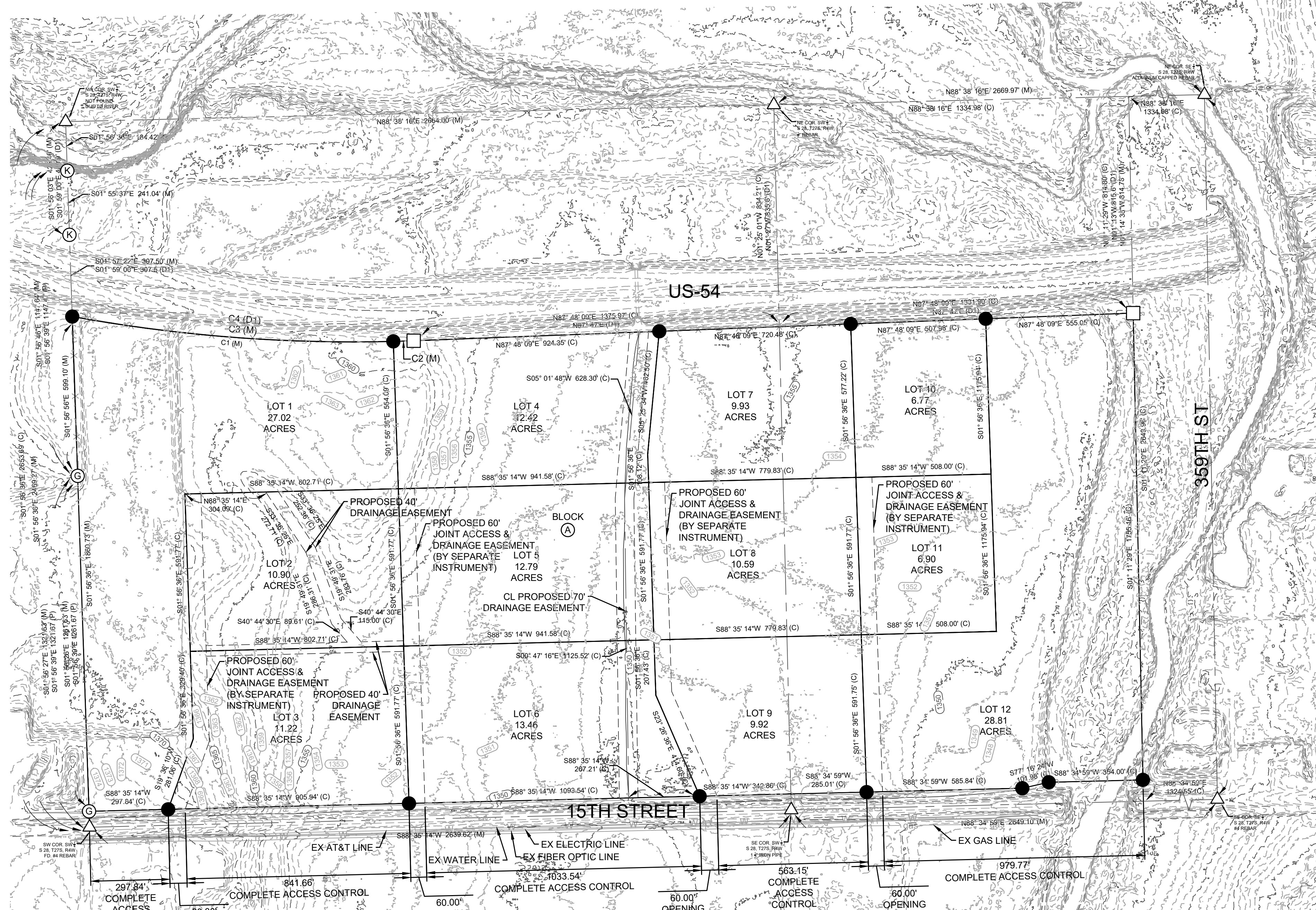


PRELIMINARY PLAT
KOES ACRES
 AN ADDITION TO SEDGWICK COUNTY, KANSAS.



VICINITY MAP
 NOT TO SCALE

LEGAL DESCRIPTION:
 THE SOUTHWEST QUARTER AND THE WEST HALF OF THE SOUTHEAST QUARTER
 OF SECTION 28, TOWNSHIP 27, RANGE 4 WEST OF THE 6TH P.M., SEDGWICK
 COUNTY, KANSAS, LYING SOUTH OF U.S. 54 RIGHT-OF-WAY AS SAID
 RIGHT-OF-WAY IS DESCRIBED IN DEED BOOK 1439, PAGE 300.



LEGEND

- △ - FOUND SECTION CORNER AS NOTED
- Ⓚ - KDOT ALUMINUM CAPPED REBAR (FOUND)
- - KDOT 4"x4" CONCRETE MONUMENT (FOUND)
- - 1/2" REBAR W/ "CED" CAP (SET)
- Ⓞ - 5/8" REBAR W/GSS CAP (FOUND)
- (M) - MEASURED
- (C) - CALCULATED
- (P) - PLATTED
- (D1) - DESCRIBED FROM DEED BOOK 1439 PAGE 300
- (R) - RECORD MEASUREMENT

- proposed property line
- adjacent property line
- - - right of way line
- - - section line
- - - easement line
- - - setback line
- x - x - x - x - x - fence line
- TV - TV - TV - TV - TV - cable line
- FOC - FOC - FOC - FOC - FOC - fiber optic line
- E - E - E - E - E - buried electric line
- E - E - E - E - E - overhead electric line
- W - W - W - W - W - water line
- - - storm water line
- - - sanitary sewer line
- GAS - GAS - GAS - GAS - GAS - gas line

Curve Table

Curve #	Arc Length (ft)	Radius (ft)	Chord Bearing	Chord Length (ft)
C1 (M)	1213.34	5879.58	S85° 34' 48"E	1211.19
C2 (M)	76.52	5879.58	S88° 08' 07"W	76.52
C3 (M)	1289.86	5879.58	S85° 57' 10"E	1287.28
C4 (D1)	1288.48	5879.58	S85° 56' 00"E	1285.90

MINIMUM PAD ELEVATION FOR LOWEST OPENING

LOT	BLOCK	ELEVATION (NAVD88)
4	A	1356.50
5	A	1356.00
6	A	1354.50
7	A	1356.50
8	A	1356.00
9	A	1354.50
12	A	1353.00

SURVEYOR:
 CERTIFIED ENGINEERING DESIGN, P.A.
 1935 W. MAPLE ST.
 WICHITA, KANSAS 67213
 (316) 262-8808

OWNER:
 CENTRAL KS
 PROPERTIES, LLC
 37680 W 15TH ST S
 CHENEY, KS 67025

NOTE: BOUNDARY SURVEY COMPLETED
 BY CERTIFIED ENGINEERING DESIGN,
 P.A. ON OR ABOUT JANUARY 17, 2025.

BENCHMARK:
 CHISELED X CUT IN TOP OF PIPE
 WEST END OF 24" RCP LOCATED
 UNDER MIDDLE DRIVE OF 37515
 W. 15TH ST. S. CHENEY, KS 67025
 MANUFACTURING DEVELOPMENT
 INC.
 ELEV. = 1369.76 (NAVD88)

CERTIFIED ENGINEERING DESIGN, P.A.

1935 WEST MAPLE STREET
 WICHITA, KANSAS 67213
 PH: (316) 262-8808
 FAX: (316) 262-1669



SHEET 1
 TOTAL 1