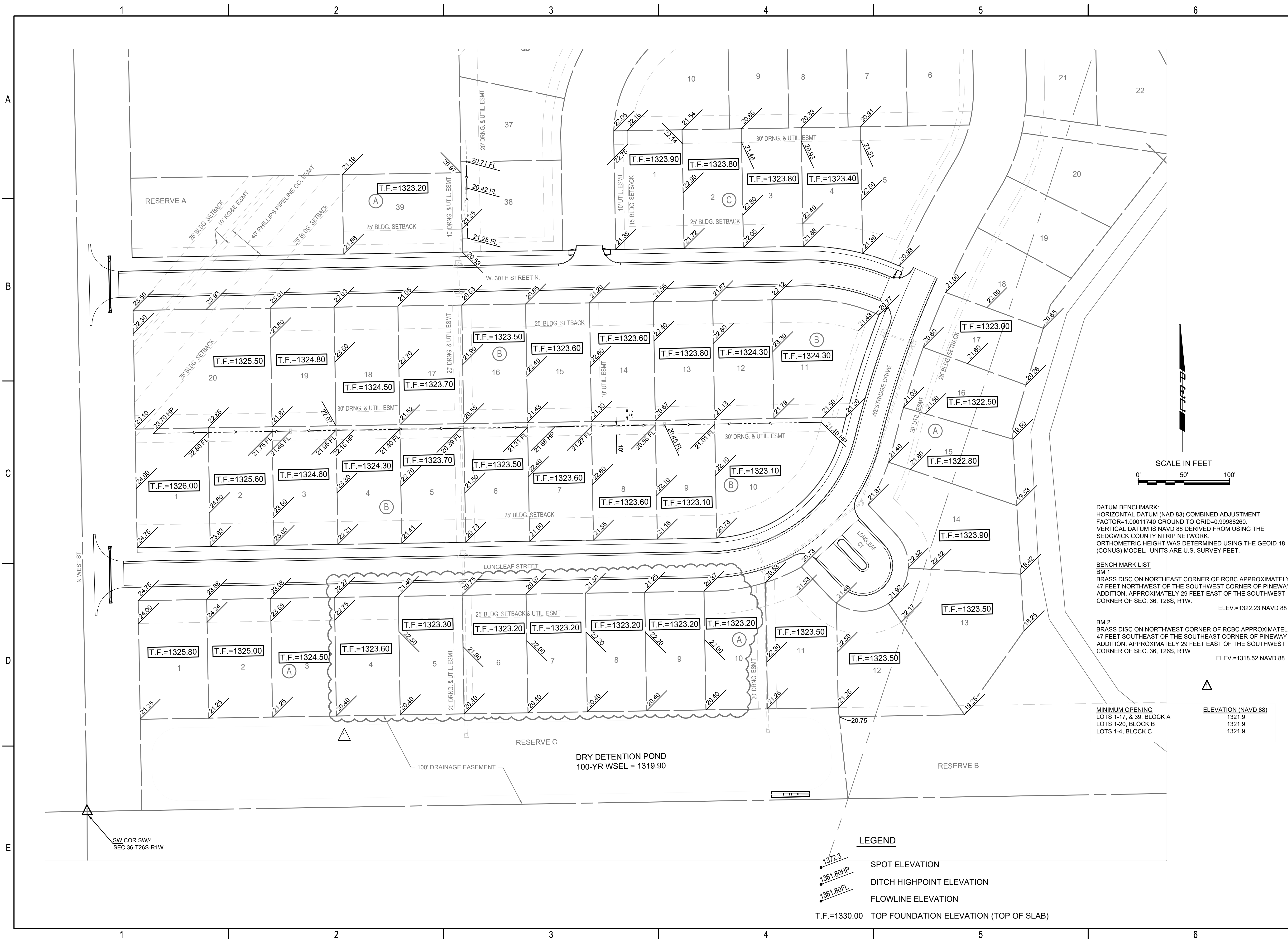


SAVED 5/13/2024 9:31:33 AM BY KEVIN GRAHAM  
 PLOTTED 7/2/2025 3:14:38 PM BY KEVIN GRAHAM  
 U:\WICHITA-CIVIL\2022\221170\001\PEC\DRAWINGS\SWD\06-221170-002-CG101 FOUR CORNER GRADING PLAN-PHASE 1.DWG



DATUM BENCHMARK:  
 HORIZONTAL DATUM (NAD 83) COMBINED ADJUSTMENT  
 FACTOR=1.00011740 GROUND TO GRID=0.99988260.  
 VERTICAL DATUM IS NAVD 88 DERIVED FROM USING THE  
 SEDGWICK COUNTY NTRIP NETWORK.  
 ORTHOMETRIC HEIGHT WAS DETERMINED USING THE GEOID 18  
 (CONUS) MODEL. UNITS ARE U.S. SURVEY FEET.

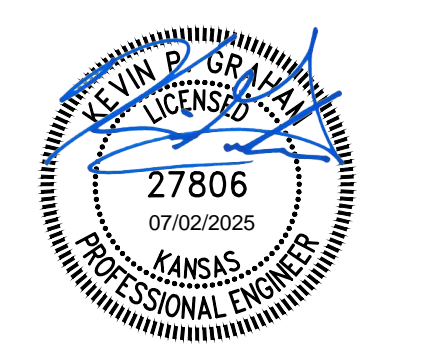
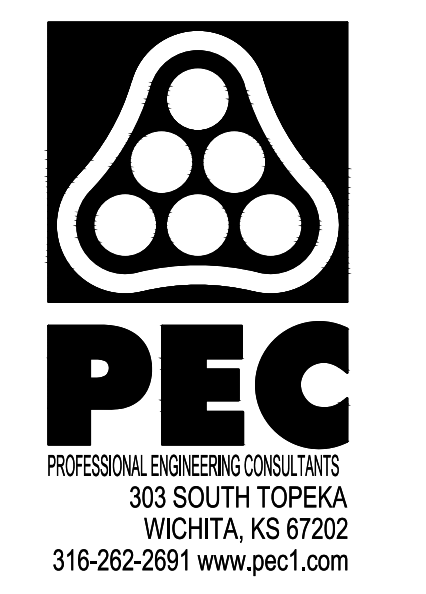
BENCH MARK LIST  
 BM 1  
 BRASS DISC ON NORTHEAST CORNER OF RBCB APPROXIMATELY  
 47 FEET NORTHWEST OF THE SOUTHWEST CORNER OF PINEWAY  
 ADDITION. APPROXIMATELY 29 FEET EAST OF THE SOUTHWEST  
 CORNER OF SEC. 36, T26S, R1W. ELEV.=1322.23 NAVD 88

BM 2  
 BRASS DISC ON NORTHWEST CORNER OF RBCB APPROXIMATELY  
 47 FEET SOUTHEAST OF THE SOUTHWEST CORNER OF PINEWAY  
 ADDITION. APPROXIMATELY 29 FEET EAST OF THE SOUTHWEST  
 CORNER OF SEC. 36, T26S, R1W ELEV.=1318.52 NAVD 88

MINIMUM OPENING

LOTS 1-17, & 39, BLOCK A	ELEVATION (NAVD 88)
	1321.9
LOTS 1-20, BLOCK B	1321.9
LOTS 1-4, BLOCK C	1321.9

- LEGEND**
- 1372.3 SPOT ELEVATION
  - ▲ 1361.80HP DITCH HIGHPOINT ELEVATION
  - 1361.80FL FLOWLINE ELEVATION
  - T.F.=1330.00 TOP FOUNDATION ELEVATION (TOP OF SLAB)



STORM WATER DRAIN NO. 523  
 IMPROVEMENTS  
 PINEWAY ADDITION

PAUL GUNZELMAN CITY ENGINEER  
 CITY OF WICHITA PROJECT NO. 458-2024-085565

Issue:	NO.	DESCRIPTION	DATE
	1	LOTS 4-10, BLOCK A	07/02/25

JOB NO.	221170-002
DATE	JUNE 2024
PM	KPG
DESIGNED BY	KPG
DRAWN BY	BJS
CHECKED BY	KMS

FOUR CORNER GRADING  
 PLAN-PHASE 1