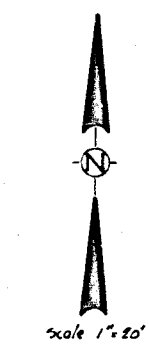
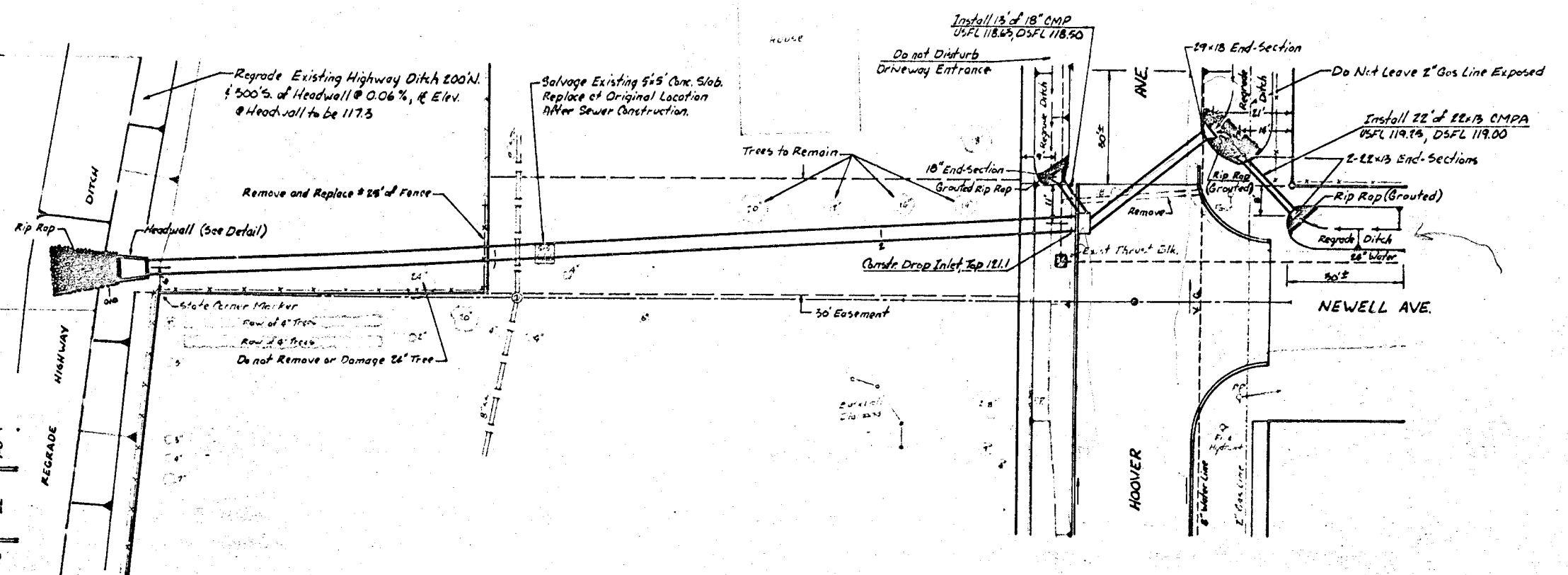
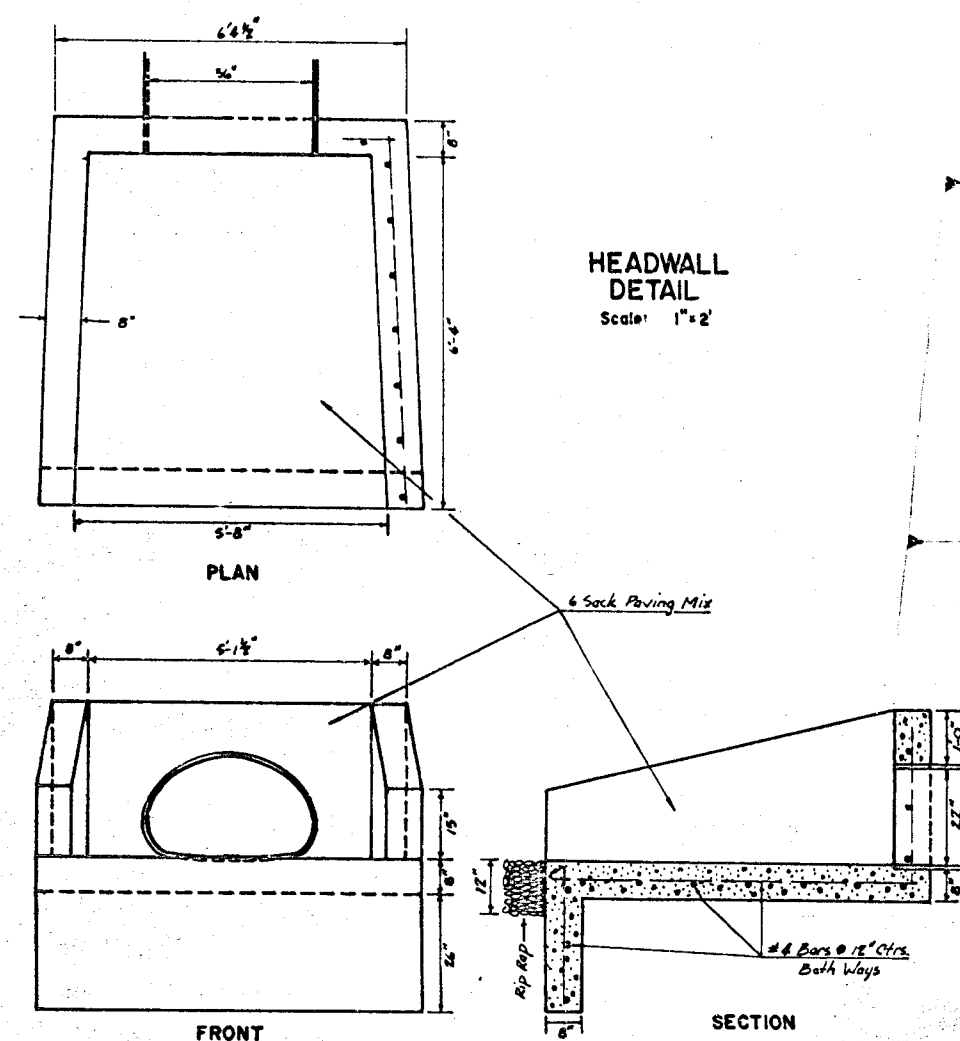
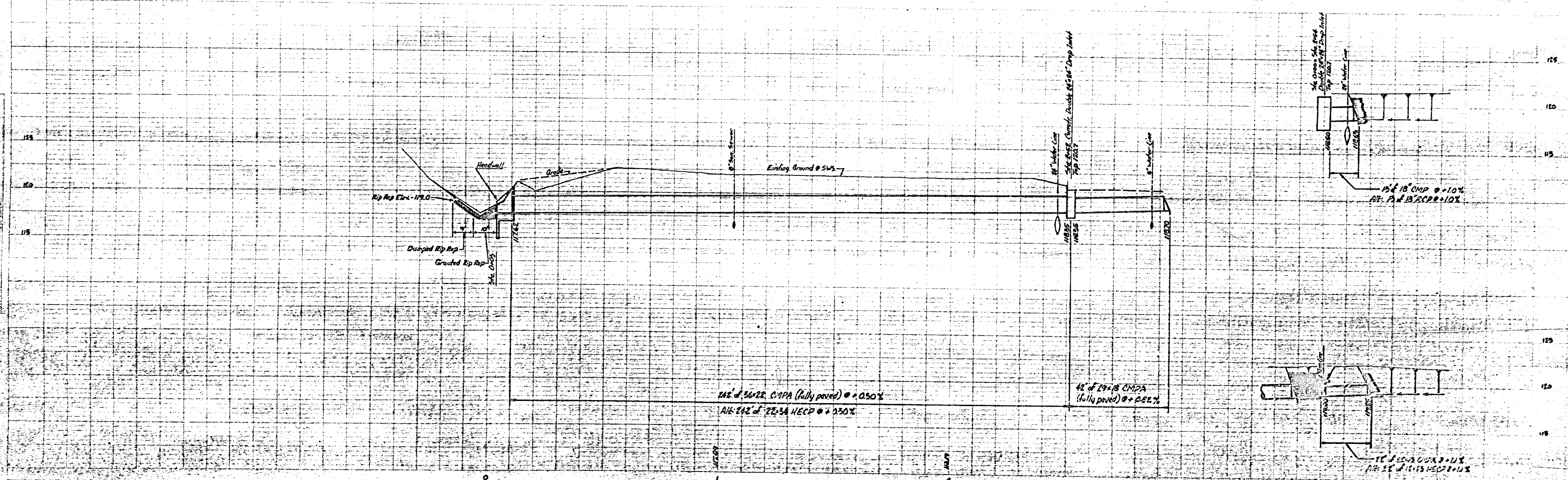


B.M. 12300 N.E. Corner of Block at 605 N. Hoover

HEADWALL
DETAIL
Scale: 1" = 2'



PROPOSED
SEWER
CONSTRUCTION
FOR
REPAIR
AND
REPLACEMENT
OF
EXISTING
SEWER
PIPE
AND
HEADWALL
AT
THE
CORNER
OF
NEWELL
AVE.
AND
HOOPER
ST.



10 11 12
24'

PLATE 1 SINGLE PLAN AND PROFILE

10 11 12
24'