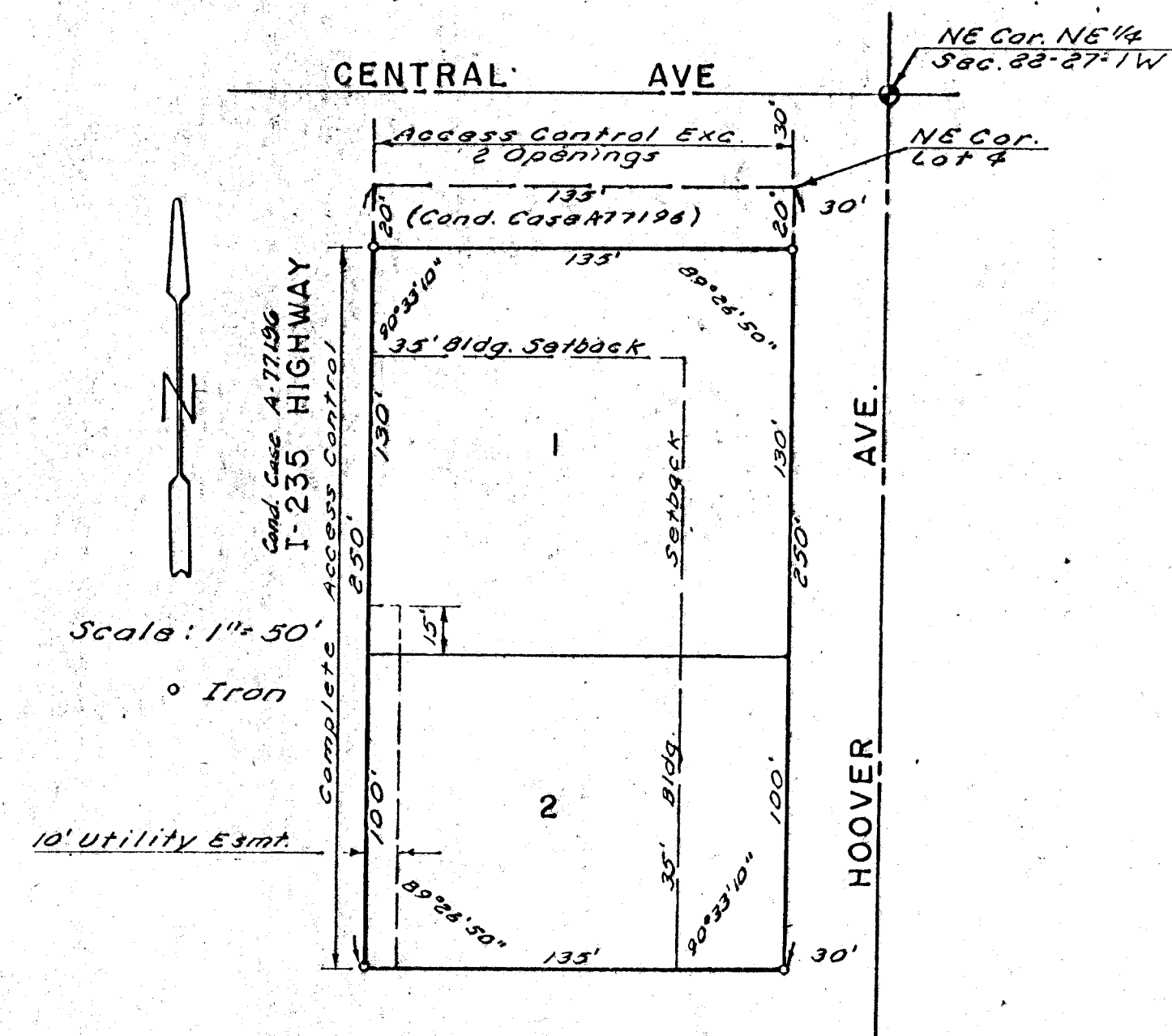


DULOHERY ADDITION

WICHITA, KANSAS



This plat of "DULOHERY ADDITION", Wichita, Kansas, has been submitted to and approved by the Wichita-Sedgwick County Metropolitan Area Planning Commission, Wichita, Kansas, dated this 13th day of January, 1983.

Wichita-Sedgwick County Metropolitan Area Planning Commission

David S. Blyden Chairman
Robert A. Calkin Secretary

This plat approved and all dedications shown hereon accepted by the Board of City Commissioners, Wichita, Kansas, this 6th day of MARCH, 1983.

Joseph J. Ritz Mayor
Donald S. Bisher City Clerk

This plat approved and all dedications shown hereon accepted by the Board of County Commissioners, Sedgwick County, Kansas, this day of , 1983.

Jack Spratt Chairman
Tom Scott Commissioner
Donald E. Bragg Commissioner
Georahy R. White County Clerk

Entered on transfer record this day of , 1983.

Georahy R. White County Clerk

State of Kansas 3 S.S. This is to certify that this plat has been filed for record in the Office of the Register of Deeds this day of , 1983, at o'clock M., and is duly recorded.

Walter H. McCork Register of Deeds
Pat Koffler Deputy

State of Kansas 3 S.S. We, Baughman Company, P.A., Surveyors in aforesaid county and state, do hereby certify that we have surveyed and platted "DULOHERY ADDITION", Wichita, Kansas, and that the accompanying plat is a true and correct exhibit of the property surveyed, described as a replat of the north 250 feet of Lot 2, Central Acres, Sedgwick County, Kansas, except the north 20 feet thereof, taken for street (Cond. Case A-77196).

Date Jan. 22, 1983 Baughman Company, P.A.

John E. Lundblad Surveyor
John E. Lundblad

Know all men by these presents, that we, the undersigned, have caused the land described in the surveyors certificate to be platted into lots to be known as "DULOHERY ADDITION", Wichita, Kansas. The easement is hereby granted as indicated for the construction and maintenance of public utilities. All abutters rights of access to I-235 and Central Ave are hereby granted to the City of Wichita, Kansas, except, however, that Lot 1 shall have access to Central Ave. at two locations, said locations to be determined by the City Engineer.

The Shamrock Properties, Incorporated
Kenneth Edminster President

State of Kansas 3 S.S. The foregoing instrument was acknowledged before me this 6th day of February, 1983, by The Shamrock Properties, Incorporated, by Kenneth Edminster, President.

Mark A. Sawyer Notary Public
 My Commission Expires 12 May 1984

