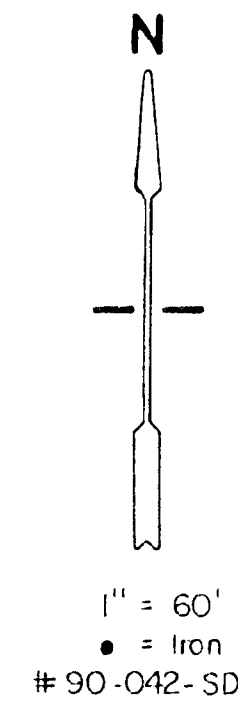


PRELIMINARY PLAT
of
DULING INDUSTRIAL 2ND ADDITION
Sedwick Co., Ks.

Thimble -
N.E. Cor. Sec. 14,
T.28S. R.1W. of the
6th P.M., Sedwick
Co., Ks.

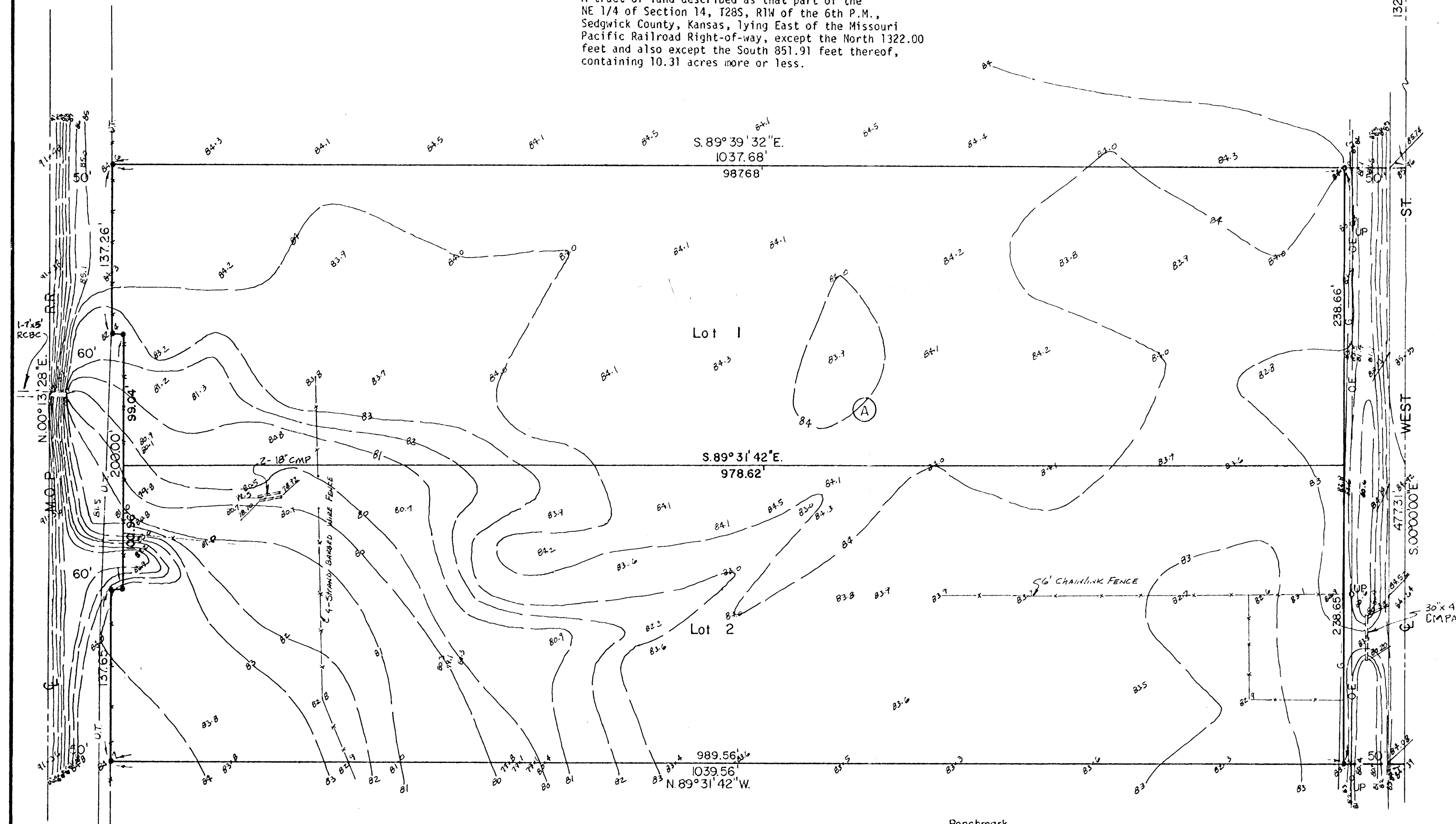


LEGAL DESCRIPTION-

A tract of land described as that part of the NE 1/4 of Section 14, T28S, R1W of the 6th P.M., Sedwick County, Kansas, lying East of the Missouri Pacific Railroad Right-of-way, except the North 1322.00 feet and also except the South 851.91 feet thereof, containing 10.31 acres more or less.

LEGEND

- G = Gas Main (Arkla Energy Resources)
- OE = Overhead Electric
- UP = Utility Pole
- UT = Underground Telephone
- 84° = Spot Elevation



MOEHRING & ASSOCIATES
CONSULTING ENGINEERS
WICHITA
Oct. 4, 1990



Benchmark -
R.R. Spk. in E. Face Utility Pole,
10' S. & 5' E. of S.E. Prop. Cor.
Elev. = 1283.66' M.S.L.
Note - Add 1200.00 to spot elevations
to convert to M.S.L.