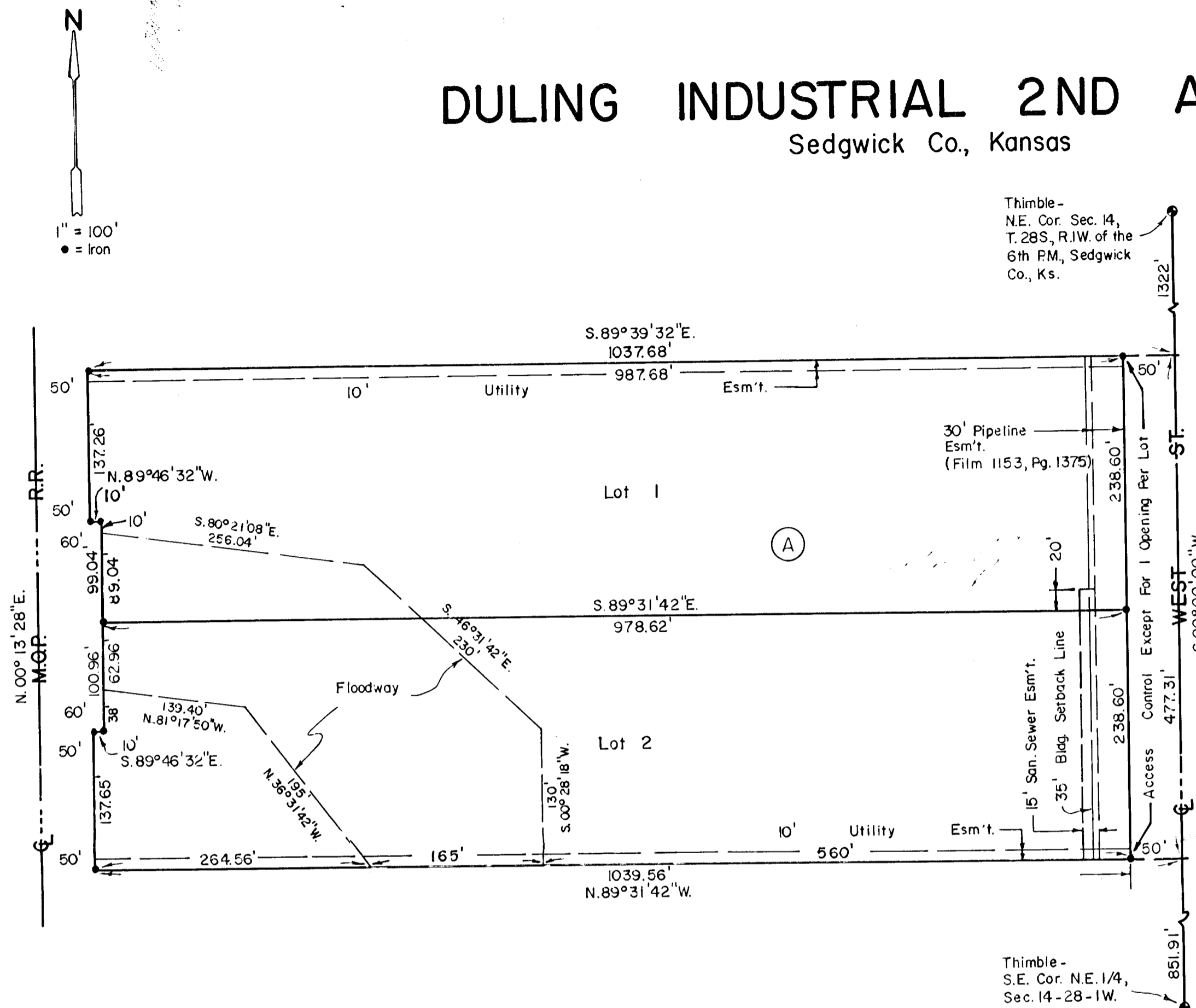


DULING INDUSTRIAL 2ND ADDITION

Sedgwick Co., Kansas



This plat of "DULING INDUSTRIAL 2ND ADDITION" has been submitted to and approved by the Wichita-Sedgwick County Metropolitan Area Planning Commission.

Dated this 14th day of February, 1991.

WICHITA-SEDGWICK COUNTY METROPOLITAN AREA PLANNING COMMISSION

George Sherman, Chairman
George Sherman

Marvin S. Krout, Secretary
Marvin S. Krout

This plat has been approved and all dedications shown hereon, if any, accepted by the City Council of the City of Wichita, Kansas, this 26th day of March, 1991.

Bob Knight, Mayor
Bob Knight

Pat Burnett, Deputy City Clerk
Pat Burnett

This plat has been approved and all dedications shown hereon, if any, accepted by the Board of Commissioners of Sedgwick County, Kansas, this day of , 1991.

Billy Q. McCray, Chairman

Betsy Gwin, Chairman Pro-tem

Paul W. Hancock, Commissioner

Bernard A. Hentzen, Commissioner

Mark F. Schroeder, Commissioner

Attest: Don Wright, County Clerk

STATE OF KANSAS, COUNTY OF SEDGWICK, SS:

This is to certify that this instrument was filed for record in the Register of Deeds Office at on the day of , 1991.

Pat Kettler, Register of Deeds

Ed Resa, Deputy

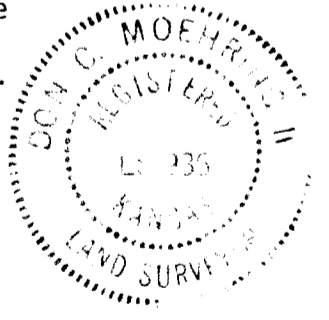
Entered on transfer record this day of , 1991.

Don Wright, County Clerk

STATE OF KANSAS, COUNTY OF SEDGWICK, SS:

I, Don C. Moehring II, a Registered Land Surveyor in said State and County, do hereby certify that I have surveyed and platted "DULING INDUSTRIAL 2ND ADDITION", Sedgwick County, Kansas, into Lots, a Block, a Street and a Floodway, the same being accurately set forth on the accompanying plat and described as that part of the NE 1/4 of Section 14, T28S, R17W of the 6th P.M., Sedgwick County, Kansas, lying East of the Missouri Pacific Railroad Right-of-way, except the North 1322.00 feet and also except the South 851.91 feet thereof.

Don C. Moehring II Surveyor

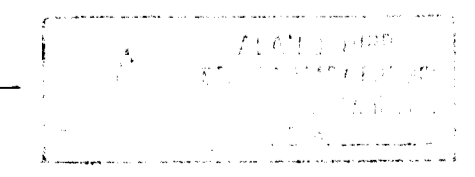


STATE OF KANSAS, COUNTY OF SEDGWICK, SS:

Be it remembered that this day of , 1991, before me, a Notary Public in and for said State and County, came Ray Duling and Winona Duling, to me personally known to be the same persons who executed the foregoing instrument of writing and duly acknowledged the execution of the same. In testimony whereof I have hereunto set my hand and affixed my notarial seal the day and year above written.

Alan J. Hipp, Notary Public

My Commission Expires 11/11/92



Know all men by these presents that we the undersigned, property owners of the land as above set forth in the Surveyor's certificate, have caused the same to be surveyed and platted into Lots, a Block, a Street and a Floodway, to be known as "DULING INDUSTRIAL 2ND ADDITION", Sedgwick County, Kansas. The street is hereby dedicated to and for the use of the public. Easements for the construction and maintenance of public utilities, as indicated on the accompanying plat, are hereby granted. All abutter's rights of access to or from West Street, over and across the East line of Lot 1 and Lot 2, Block A, are hereby granted to the appropriate governing body, provided however, that Lot 1 and Lot 2, Block A, shall each have access to West Street at one location, to be determined by the appropriate Engineer. The Floodway shall be the responsibility of the owners of the Lots on which the Floodway is located until such time as the Governing Body exercising jurisdiction elects to assume the responsibility for maintenance and improvement of the drainage and as specified in an associated covenant, provided further, that no building shall be constructed on or within said Floodway, nor shall any fill, change of grade, creation of channel or other work be carried on without the permission of the appropriate Engineer.

Ray Duling Winona Duling

Following listed and