

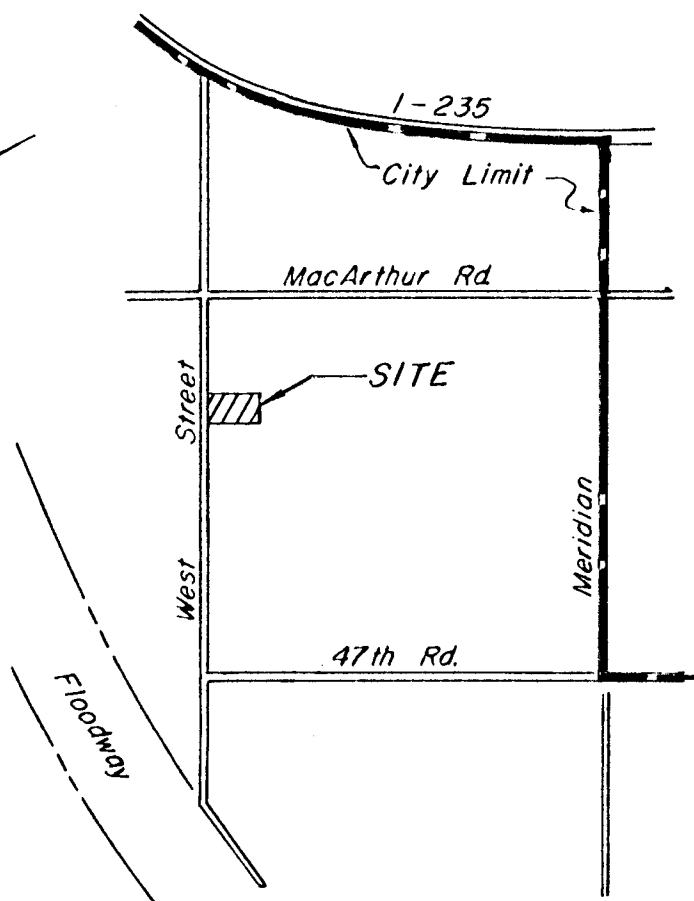
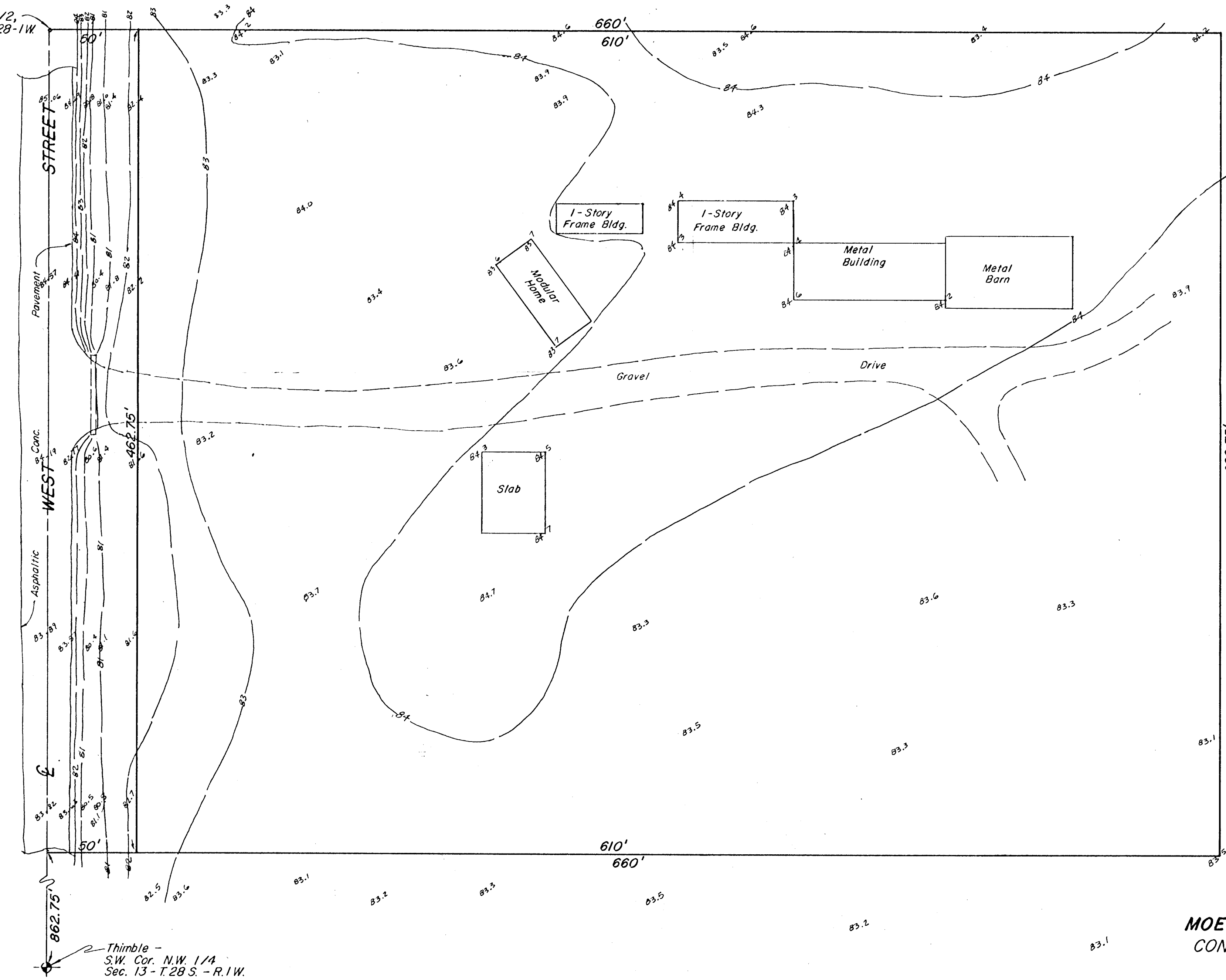
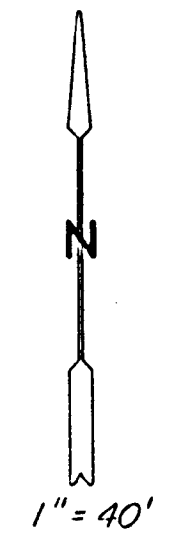
PRELIMINARY PLAT OF
DULING INDUSTRIAL ADDITION

SEDGWICK COUNTY, KANSAS

LEGAL DESCRIPTION:

THE WEST 660.0' OF THE NORTH 1/2 OF THE SOUTH 1/2 OF THE NW 1/4 OF SEC. 13, T28S, R1W OF THE 6TH P.M., SEDGWICK COUNTY, KANSAS, EXCEPT THE SOUTH 200.0' THEREOF.

Iron -
 N.W. Cor., S. 1/2,
 NW. 1/4, 13-28-1W



VICINITY MAP



MOEHRING & ASSOCIATES
 CONSULTING ENGINEERS
 WICHITA

Thimble -
 S.W. Cor. N.W. 1/4
 Sec. 13 - T.28 S. - R.1W.