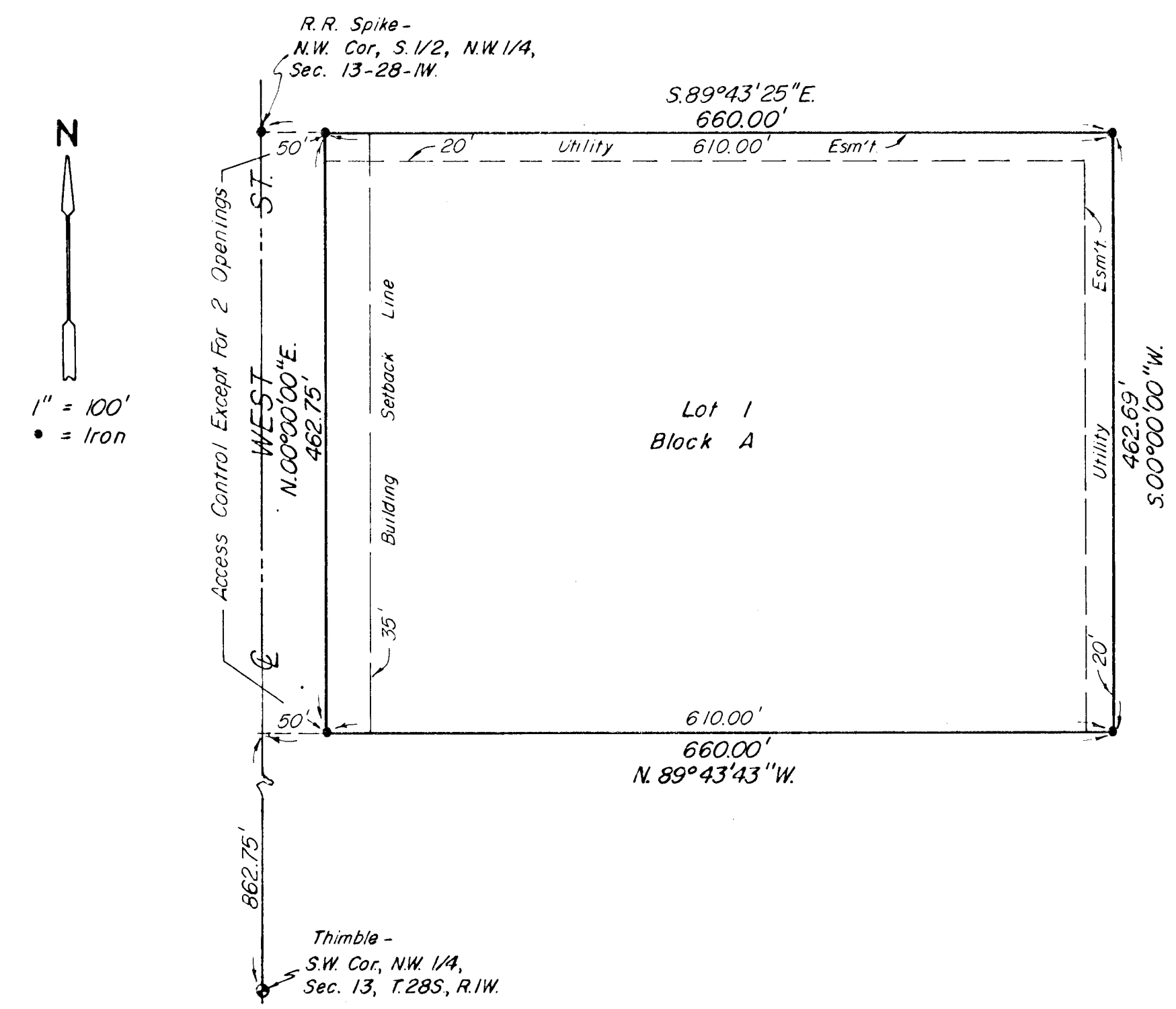


Duling Industrial Addition

DULING INDUSTRIAL ADDITION

Sedgwick Co., Kansas.



1" = 100'
• = Iron

R.R. Spike -
N.W. Cor, S 1/2, NW 1/4,
Sec. 13-28-W.

Thimble -
S.W. Cor, NW 1/4,
Sec. 13, T28S, R1W.

STATE OF KANSAS, COUNTY OF SEDGWICK, SS:

I, Craig Moehring, a Registered Land Surveyor in said State and County, do hereby certify that I have surveyed and platted "DULING INDUSTRIAL ADDITION", Sedgwick County, Kansas, into a Lot, a Block and a Street, the same being accurately set forth on the accompanying plat and described as the West 660.0' of the North 1/2 of the South 1/2 of the NW 1/4 of Sec. 13, T28S, R1W of the 6th P.M., Sedgwick County, Kansas, except the South 200.0' thereof.

Craig Moehring
Surveyor

Know all men by these presents that we the undersigned, property owners of the land as above set forth in the Surveyor's Certificate, have caused the same to be surveyed and platted into a Lot, a Block and a Street, to be known as "DULING INDUSTRIAL ADDITION", Sedgwick County, Kansas. Easements for the construction and maintenance of public utilities, as indicated on the accompanying plat, are hereby granted. The street is hereby dedicated to and for the use of the public. All abutter's rights of access to or from West St., over and across the West line of Lot 1, Block A, are hereby granted to the appropriate governing body, provided however, that Lot 1, Block A, shall have access to West St. at two locations, as determined by the appropriate Engineer.

Ray Duling
Winona Duling

STATE OF KANSAS, COUNTY OF SEDGWICK, SS:

Be it remembered that this _____ day of _____, 1988, before me, a Notary Public in and for said State and County, came Ray Duling and Winona Duling, to me personally known to be the same persons who executed the foregoing instrument of writing and duly acknowledged the execution of the same. In testimony whereof I have hereunto set my hand and affixed my notarial seal the day and year above written.

Jana C. Wickham, Notary Public
My Commission Expires _____

This plat of "DULING INDUSTRIAL ADDITION" has been submitted to and approved by the Wichita-Sedgwick County Metropolitan Area Planning Commission.

Dated this 15th day of October, 1988.

WICHITA-SEDGWICK COUNTY METROPOLITAN AREA PLANNING COMMISSION

Sue L. Cline, Chairman
Sue L. Cline

Marvin S. Krout, Secretary
Marvin S. Krout

This plat has been approved and all dedications shown hereon, if any, accepted by the City Council of the City of Wichita, Kansas, this _____ day of _____, 1988.

Sheldon Kamen, Mayor
Sheldon Kamen

John Muir, City Clerk
John Muir

This plat has been approved and all dedications shown hereon, if any, accepted by the Board of Commissioners of Sedgwick County, Kansas, this _____ day of _____, 1988.

Mark F. Schroeder, Chairman
Mark F. Schroeder

Billy Q. McCray, Chairman Pro-tem
Billy Q. McCray

David Bayouth, Commissioner
David Bayouth

Tom Scott, Commissioner
Tom Scott

Bernard A. Hentzen, Commissioner
Bernard A. Hentzen

Attest: Don Wright, County Clerk
Don Wright

STATE OF KANSAS, COUNTY OF SEDGWICK, SS:

This is to certify that this instrument was filed for record in the Register of Deeds Office at _____ on the _____ day of _____, 1988.

Pat Kettler, Register of Deeds
Pat Kettler

Ed Resa, Deputy
Ed Resa

Entered on transfer record this _____ day of _____, 1988.

Don Wright, County Clerk
Don Wright

