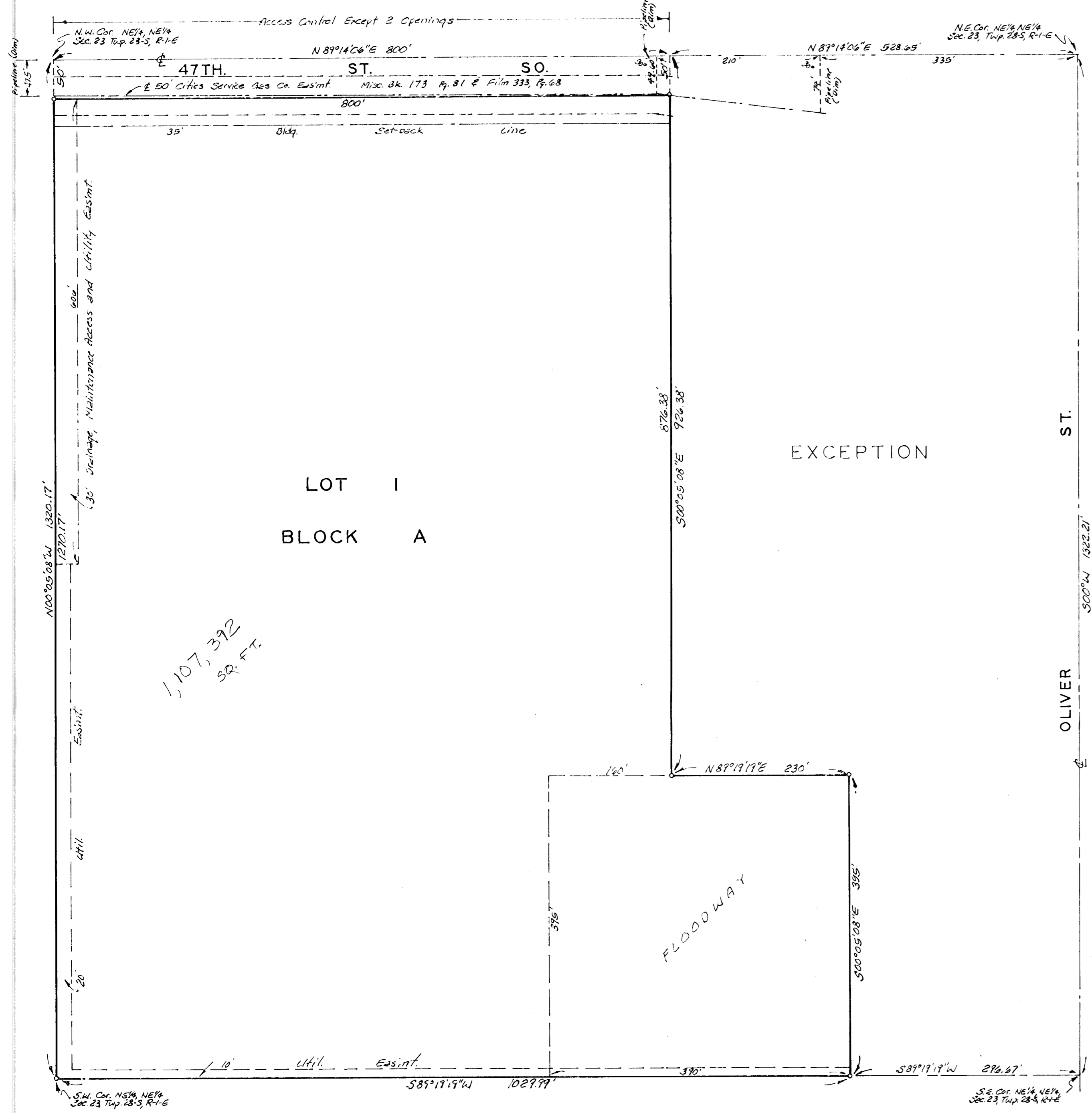


CHELSEA INDUSTRIAL PARK

SEDGWICK COUNTY, KANSAS.



LOT I
BLOCK A

1,107,392
SQ. FT.



1" = 100'
0" = 10'

State of Kansas) S.S. We Baughman Company, P.A., Surveyors in and for Sedgwick County, Kansas do hereby certify that we have surveyed and plotted "CHELSEA INDUSTRIAL PARK", Sedgwick County, Kansas and that the accompanying plat is a true and correct exhibit of the property surveyed, described as beginning at the N.W. Corner of the NE 1/4 of the NE 1/4 of Sec. 23, T. 28-S. R. 1-E of the 6th P.M., Sedgwick County, Kansas; thence east along the north line of the NE 1/4 of said NE 1/4 800 feet; thence south parallel with the west line of the NE 1/4 of said NE 1/4 920.30 feet to a point 395 feet north of the south line of the NE 1/4 of said NE 1/4; thence east, parallel with the south line of the NE 1/4 of said NE 1/4 330 feet; thence south, parallel with the west line of the NE 1/4 of said NE 1/4 395 feet to the south line of the NE 1/4 of said NE 1/4; thence west 1029.99 feet to the S.W. Corner of the NE 1/4 of said NE 1/4; thence north 1320.17 feet to beginning. The street being vacated by virtue of K.S.A. 12-512(b).

Baughman Company, P.A.

2-15-85
date

William C. Foster
Surveyor

Know all men by these presents that we, the undersigned, have caused the land described in the surveyors certificate to be platted into a Lot, Block and Street to be known as "CHELSEA INDUSTRIAL PARK", Sedgwick County, Kansas. The utility easements are hereby granted for the construction and maintenance of all public utilities. The Floodway is hereby reserved for water run-off detention purposes. The street is hereby dedicated to and for the use of the public. All abutters rights of access to or from 47th St. over and across the north line of Lot I, are hereby granted to the appropriate governing body, provided however that Lot I, shall have access to 47th St. at 2 points as shall be determined by the appropriate governing body. The Drainage, Maintenance Access and Utility easement is hereby granted for Drainage, Maintenance Access and Utility purposes.

Jeffrey S. Greenberg C. Lynne Greenberg

State of Kansas) S.S. The foregoing instrument was acknowledged before me, this 11 day of February, 1985, by Jeffrey S. Greenberg and C. Lynne Greenberg, his wife.

Marie A. Stiles
Notary Public

My Appt. Exp. 12-31-85

We, the undersigned holders of a mortgage on the above described property do hereby consent to this plat of "CHELSEA INDUSTRIAL PARK", Sedgwick County, Kansas.

Fourth National Bank and Trust Company, Wichita

State of Kansas) S.S. The foregoing instrument was acknowledged before me this 11 day of February, 1985, by _____ of Fourth National Bank and Trust Company, Wichita, on behalf of the corporation.

Notary Public

My Appt. Exp. _____

This plat of "CHELSEA INDUSTRIAL PARK", Sedgwick County, Kansas, has been submitted to and approved by the Wichita-Sedgwick County Metropolitan Area Planning Commission, Wichita, Kansas.

Dated this 11 day of February, 1985.

Wichita-Sedgwick County Metropolitan Area Planning Commission

James C. Wilson
Chairman

Robert A. Lakin
Secretary

This plat approved and all deductions shown hereon accepted by the Board of Commissioners of the City of Wichita, Kansas, this 5 day of MARCH, 1985.

Robert A. Knight
Mayor

Conrad C. Wisocki
City Clerk

This plat approved and all deductions shown hereon accepted by the Board of Commissioners of Sedgwick County, Kansas, this _____ day of _____, 1985.

Chairman

Commissioner

Commissioner

County Clerk

County Clerk

Entered on transfer record this _____ day of _____, 1985.

County Clerk

State of Kansas) S.S. This is to certify that this plat has been filed for record in the office of the Register of Deeds this _____ day of _____, 1985, at _____ o'clock _____ M.; and is duly recorded.

Register of Deeds

Deputy