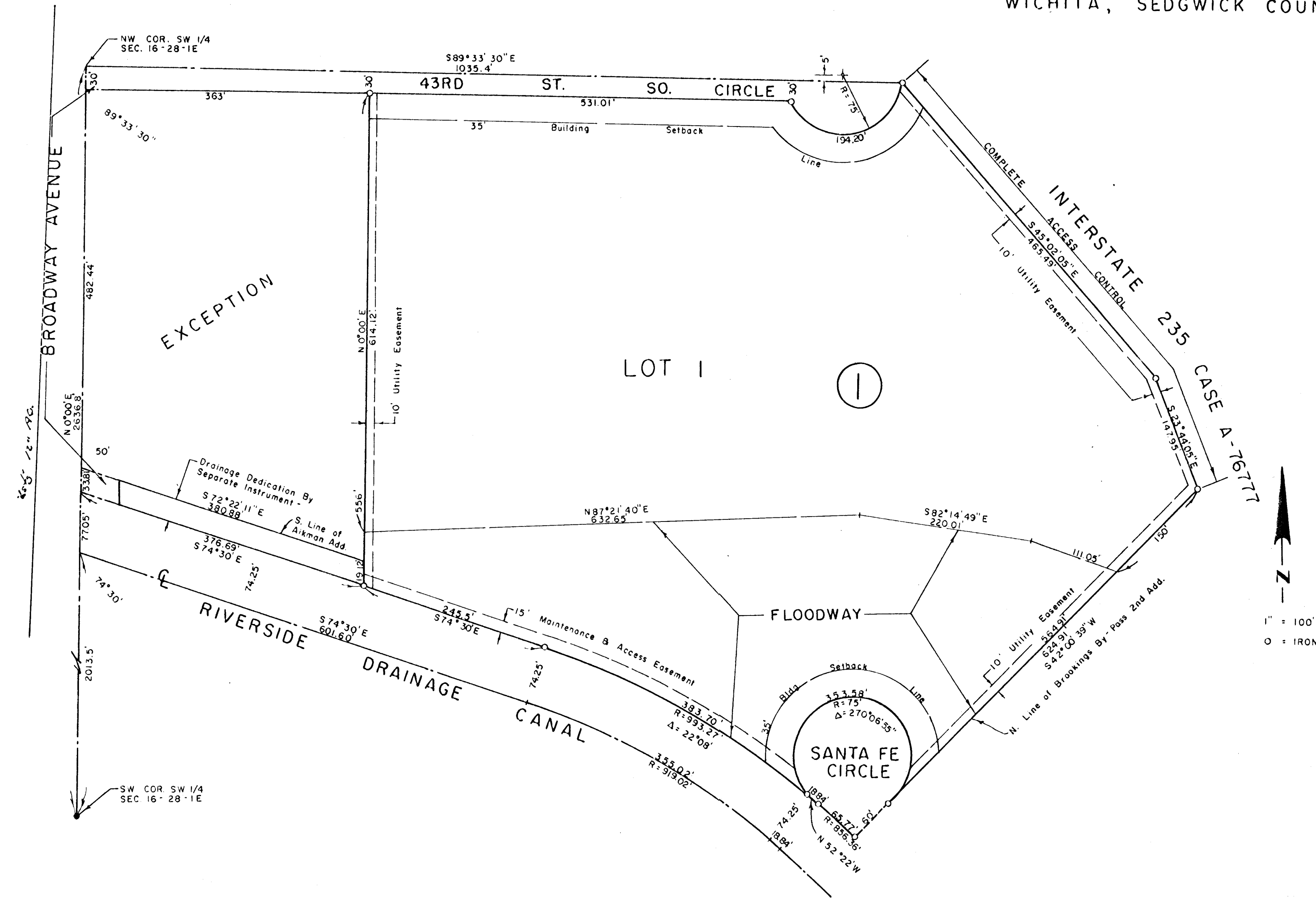


CHEROKEE INDUSTRIAL PARK

WICHITA, SEDGWICK COUNTY, KANSAS



State of Kansas, County of Sedgwick, SS.

I, Lowell D. High, Land Surveyor in said State and County do hereby certify that I have surveyed and platted "CHEROKEE INDUSTRIAL PARK", Wichita, Sedgwick County, Kansas and that the accompanying plat is a true and correct exhibit of said survey described as follows: All that part of the Southwest Quarter of Section 16, Township 28 South, Range 1 East of the 6th P.M., Sedgwick County, Kansas, lying North and East of the Riverside Drainage Canal as condemned in District Court Case No. 48670 and North of the North line of Brookings By-Pass 2nd Addition and West of the West line of Interstate Highway No. 235 as condemned in District Court Case A-76777, EXCEPT the South 240 feet of the North 270 feet of the West 363 feet thereof and EXCEPT Aikman Addition, EXCEPT the West 40 feet for highway.

_____, Land Surveyor
Lowell D. High

Know all men by these presents that Mid States Management & Development Co., A Limited Partnership, by William Reese, President, has caused the land described in the Land Surveyor's Certificate to be platted into a Lot, a Block, and Streets to be known as "CHEROKEE INDUSTRIAL PARK", Wichita, Sedgwick County, Kansas. Utility easements as indicated on the plat are hereby granted for the construction and maintenance of all public utilities. The streets are hereby dedicated to and for the use of the public. The maintenance and access easement is hereby dedicated for maintenance and access purposes. Complete Access Control to Interstate Highway No. 235 is as granted in Case A-76777. No building shall be constructed below a minimum elevation of 86.1 City Datum or elevation 1273.5 Mean Sea Level Datum.

The floodway shall be the responsibility of the owner of Lot 1 until such time as the governing body exercising jurisdiction elects to assume the responsibility for maintenance and improvements of the drainage, provided further that no building shall be constructed on or within said floodway, nor shall any fill change of grade, creation of channel or other work be carried on without the permission of the Wichita-Sedgwick County Flood Control Office or their successors of office.

Mid States Management & Development
Co. A Limited Partnership

_____, President
William Reese

ATTEST: _____, Secretary

State of Kansas, County of Sedgwick, SS.

The foregoing instrument was acknowledged before me this _____ day of _____, 1985 by William Reese, President, Mid States Management & Development Co., A Limited Partnership.

_____, Notary Public

My Commission expires: _____

Accepted by the Board of County Commissioners of Sedgwick County, Kansas, this _____ day of _____, 1985.

_____, Mayor
_____, City Clerk

This plat approved and all dedications shown hereon accepted by the Board of County Commissioners of Sedgwick County, Kansas, this _____ day of _____, 1985.

_____, Chairman
_____, Commissioner
_____, Commissioner

ATTEST: _____, County Clerk

Entered on transfer record this _____ day of _____, 1985.

_____, County Clerk

State of Kansas, County of Sedgwick, SS.

this is to certify that this instrument was filed for record in the Register of Deeds Office at _____ o'clock _____ m., on the _____ day of _____, 1985.

_____, Register of Deeds
_____, Deputy

125,232
 155,232
 150,000
 31,500

This plat of "CHEROKEE INDUSTRIAL PARK", Wichita, Sedgwick County, Kansas has been submitted to and approved by the Wichita-Sedgwick County Metropolitan Area Planning Commission, Wichita, Kansas.

Dated this _____ day of _____, 1985.

Wichita-Sedgwick County Metropolitan
Area Planning Commission

_____, Chairman
_____, Secretary