

# DRAINAGE PLAN

9-17-81

# Cherokee Sunrise West

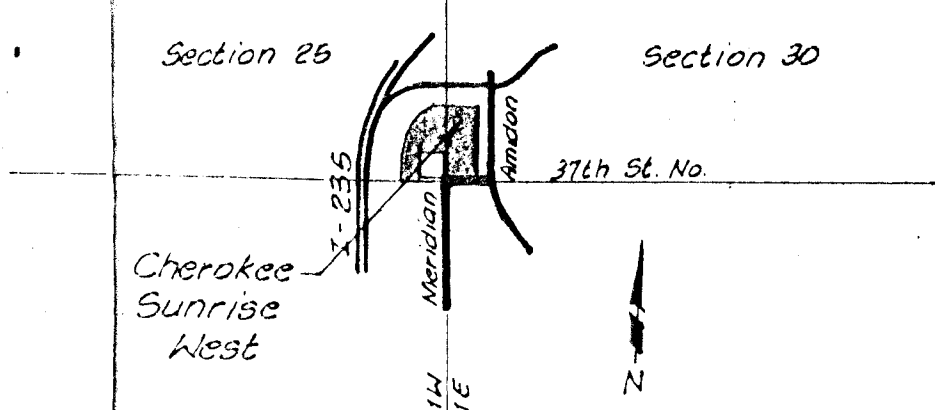
Owner: 4th Nat'l Bank and Trust Co. Owner/Developer: Cherokee Properties Inc. Wichita, Kansas

Engineer: Professional Engineering Consultants, P.A. 1440 E. English Wichita, Kansas 67211

Benchmark - 2 1/2" Spike in light pole, 250' east and 22' north of the SW Cor., Sec. 30, T26 S, R1 E of the 6th P.M. Elev. 137.69 City datum

Scale: 1"=50'  
August 10, 1981

Date of Topo - July 31, 1981



VICINITY MAP

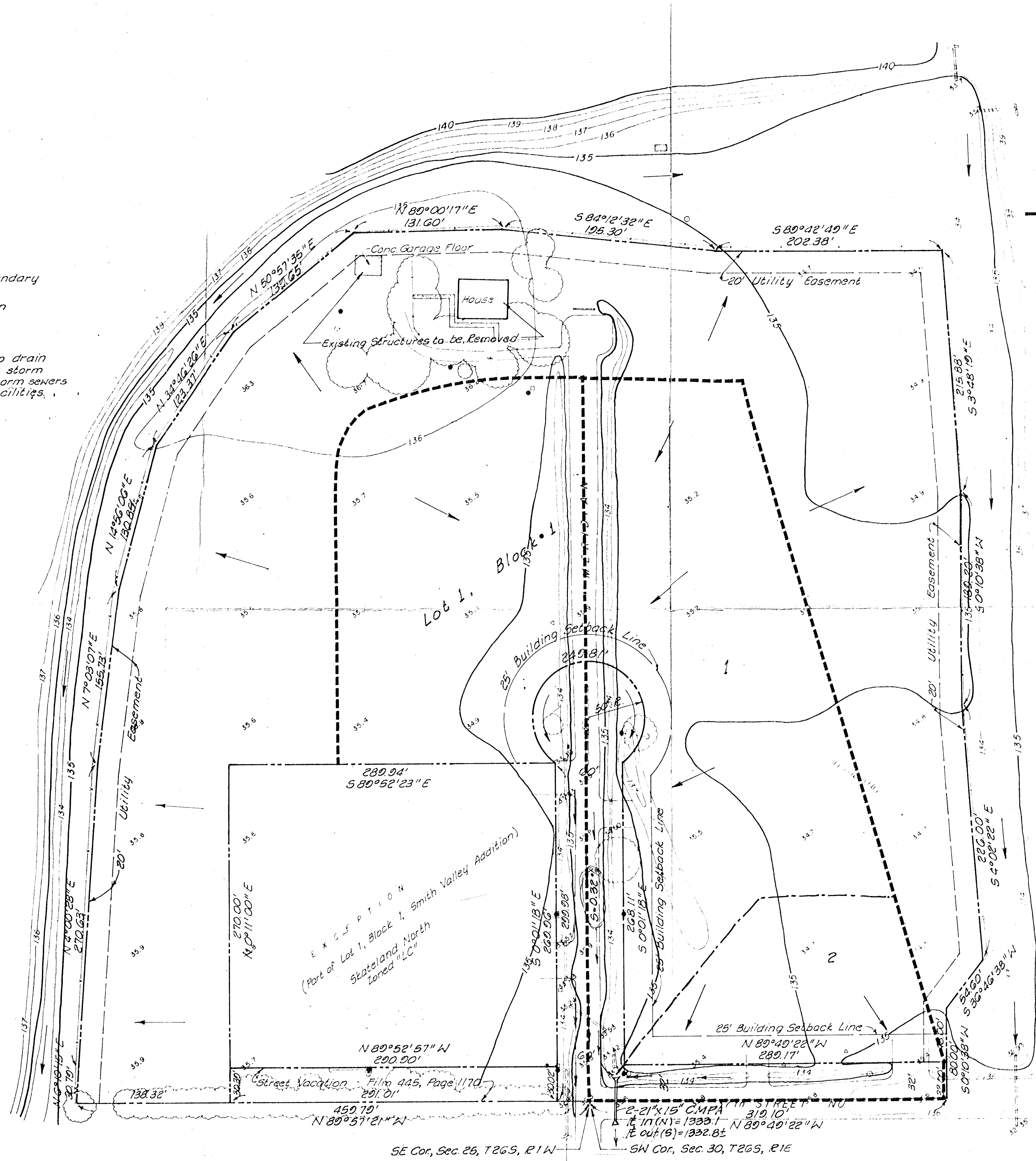
Zoning: Existing - "AA", "LC", approved "LC"  
Proposed - "R5"

Utilities -  
 Storm Sewer - none available  
 Sanitary Sewer - none available  
 Water - Closest available at Meridian and McLean Blvd @ Wichita Valley Center Flood Control E/W; 8" AC Water Main.  
 Telephone - Line along west side of Meridian - buried cable north of 37th St., aerial lines south of 37th St. Also, a buried cable on the north side of 37th St. running from Meridian to the east.  
 Gas - A 6" main running north on Meridian from 37th St. lying 6' east of the west 1/2, and a 4" running east from Meridian, lying 6' north of the north 1/2.  
 Electricity - A single 7200 kv overhead line, west side of Meridian; 3 @ 12 kv 4 wire 60 cy, north side of 37th.

## LEGEND

- Proposed Drainage Boundary
- Drainage Flow Direction
- Proposed Culvert

Note:  
All areas of the lot shall be graded to drain to streets, gutters, ditches, or existing storm sewers via drives, flumes, private storm sewers and/or other approved drainage facilities.



SE Cor., Sec. 26, T26 S, R1 W  
SW Cor., Sec. 30, T26 S, R1 E

1333.1  
1187.4  
145.7