

PRELIMINARY PLAT

Cherokee Sunrise West

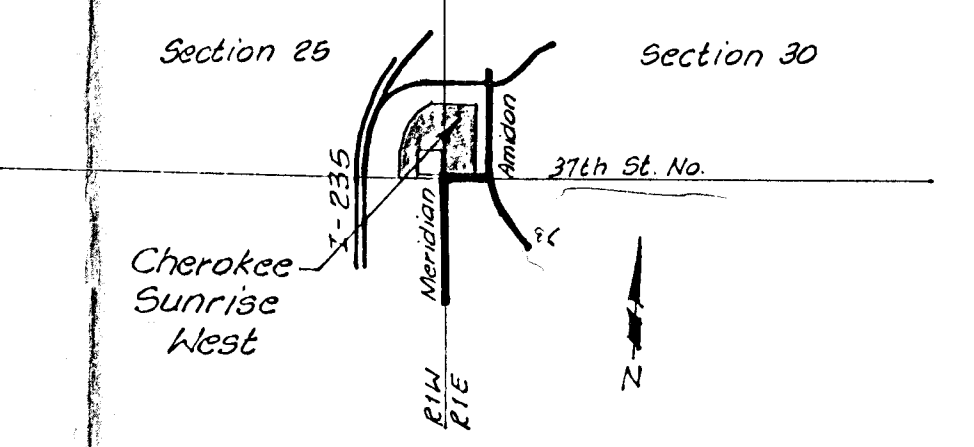
Owner: 4th Nat'l Bank and Trust Co. Owner/Developer: Cherokee Properties Inc. Wichita, Kansas

Engineer: Professional Engineering Consultants, P.A. 1440 E. English Wichita, Kansas 67211

Bevich Mark - 22 Spike in light pole, 250' east and 22' north of the SW Cor., Sec. 30, T26S, R1E of the 6th P.M. Elev. 137.60 City datum

Scale: 1"=50'
August 10, 1981

Date of Topo - July 31, 1981



VICINITY MAP

Zoning: Existing - "AA", "LC", approved "LC"
Proposed - "R5"

- Utilities -
- Storm Sewer - none available
 - Sanitary Sewer - none available
 - Water - Closest available at Meridian and McLean Blvd @ Wichita-Valley Center Flood Control E/W, 8" AC Water Main.
 - Telephone - Line along west side of Meridian - buried cable north of 37th St., aerial lines south of 37th St. Also, a buried cable on the north side of 37th St. running from Meridian to the east.
 - Gas - A 6" main running north on Meridian from 37th St. lying 6' east of the west 12', and a 4" running east from Meridian, lying 6' north of the north 12'.
 - Electricity - A single 7200 kv overhead line, west side of Meridian; 3/4 12 kv 4 wire 60 cy, north side of 37th.

Unplatted
Owner: Francis L. Brath
3150 N. Meridian
Wichita, Kansas

SE Cor., Sec. 26, T26S, R1E

SW Cor., Sec. 30, T26S, R1E

Womer's Plaza Addition

Meridian Gardens 2nd Addition

A.M.F.D.-ON
Womer St.