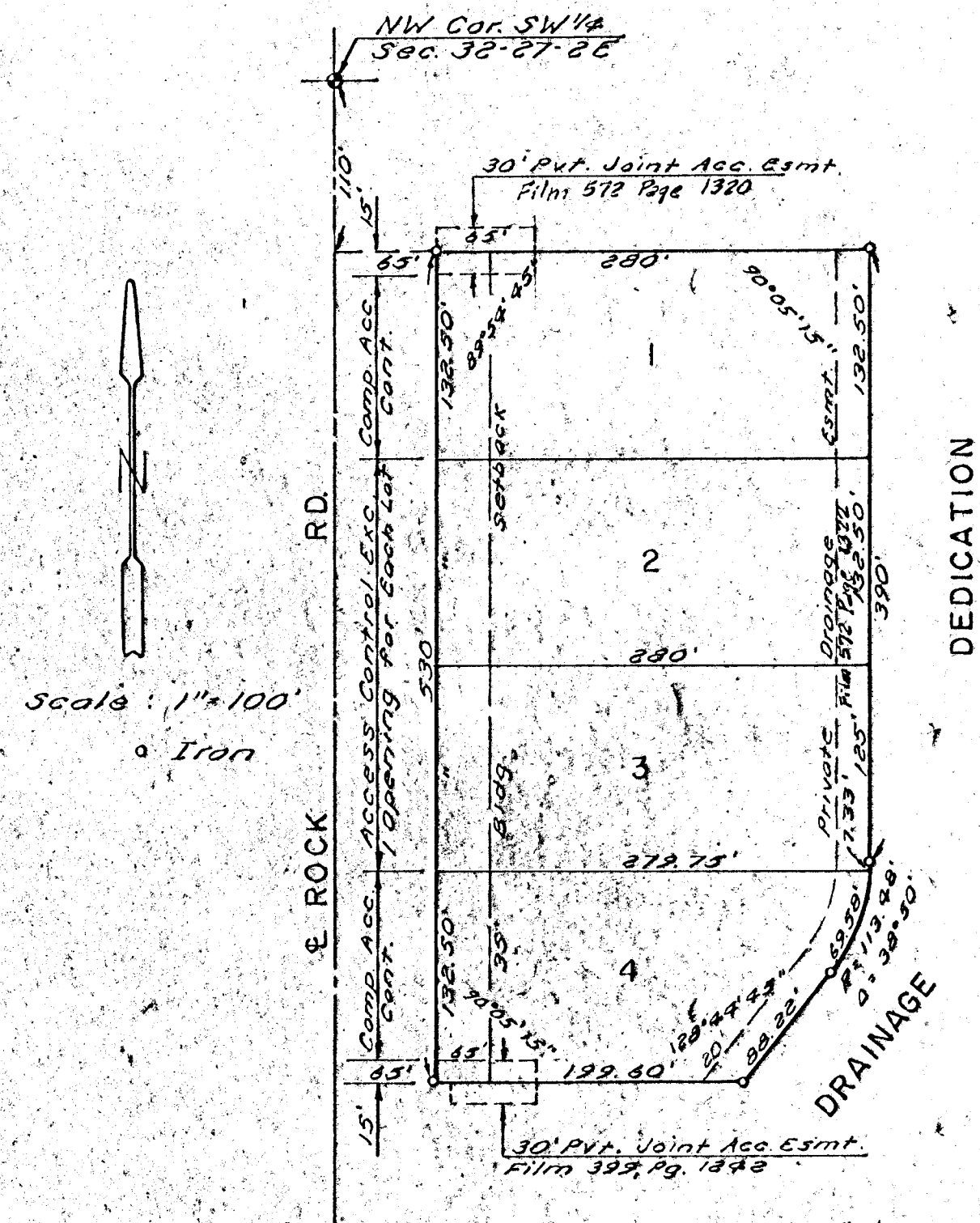


SIXTH ADDITION TO CHERRY CREEK HILLS

WICHITA, KANSAS



This plat of "SIXTH ADDITION TO CHERRY CREEK HILLS", Wichita, Kansas, has been submitted to and approved by the Wichita-Sedgwick County Metropolitan Area Planning Commission, Wichita, Kansas, dated this 20th day of January, 1982.

Wichita-Sedgwick County Metropolitan Area Planning Commission

John L. Anderson Chairman
Robert A. Fisher Secretary

This plat approved and all dedications shown hereon accepted by the Board of City Commissioners, Wichita, Kansas, this 22ND day of MARCH, 1983.

Robert W. Smith Mayor
Donald G. Drugg City Clerk

This plat approved and all dedications shown hereon accepted by the Board of County Commissioners, Sedgwick County, Kansas, this _____ day of _____, 1983.

Chairman

Commissioner

Commissioner

County Clerk

Entered on transfer record this day of _____, 1983.

County Clerk

State of Kansas, ss: This is to certify that this plat has been filed for record in the Office of the Register of Deeds this day of _____, 1983, at _____ o'clock, _____ M., and is duly recorded.

Register of Deeds

Deputy

We, East Side Bank and Trust, holder of a mortgage on part of the above described property, do hereby consent to the plat of "SIXTH ADDITION TO CHERRY CREEK HILLS".

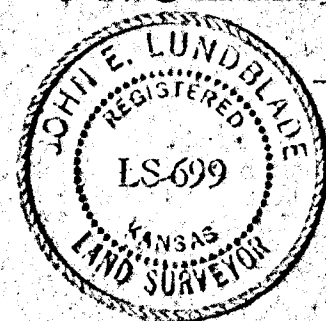
John W. Fisher, Pres

State of Kansas, ss: The foregoing instrument was acknowledged before me this 14th day of May, 1982, by the East Side Bank and Trust, by A. DALE WHEELER, PRESIDENT.

Delroy J. Stark, Notary Public
My Commission Expires Aug. 13, 1984

State of Kansas, ss: We, Baughman Company, P.A., Surveyors in aforesaid county and state, do hereby certify that we have surveyed and platted "SIXTH ADDITION TO CHERRY CREEK HILLS", Wichita, Kansas, and that the accompanying plat is a true and correct exhibit of the property surveyed described as a replat of the south 530 feet of the north 640 feet of Lot 1, Block 1, Cherry Creek Hills, an Addition to Wichita, Sedgwick County, Kansas, located in the SW1/4 of Section 32, T27S, R2E.

Date May 3, 1982 Baughman Company, P.A.



John E. Lundblad Surveyor

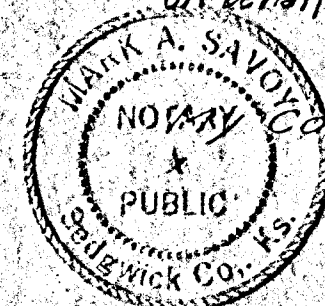
Know all men by these presents, that we, the undersigned, have caused the land described in the surveyors certificate to be platted into lots to be known as "SIXTH ADDITION TO CHERRY CREEK HILLS", Wichita, Kansas.

All abutters rights of access to Rock Rd. are hereby granted to the City of Wichita, Kansas, except, however, that Lot 1 shall have access over the north 15 feet, Lot 4 shall have access over the south 15 feet, and Lots 2 and 3 shall each have access at one location, said locations to be determined by the City Engineer.

Jen. Rentals, Inc.
Leslie W. Griffith President

Leslie W. Griffith

State of Kansas, ss: The foregoing instrument was acknowledged before me this 14th day of June, 1982, by Leslie W. Griffith, President of Jen Rentals, Inc. a Kansas Corporation on behalf of said Corporation, and Leslie W. Griffith a single person.



Mark A. Savoy Notary Public
My Commission Expires 12 May 1984