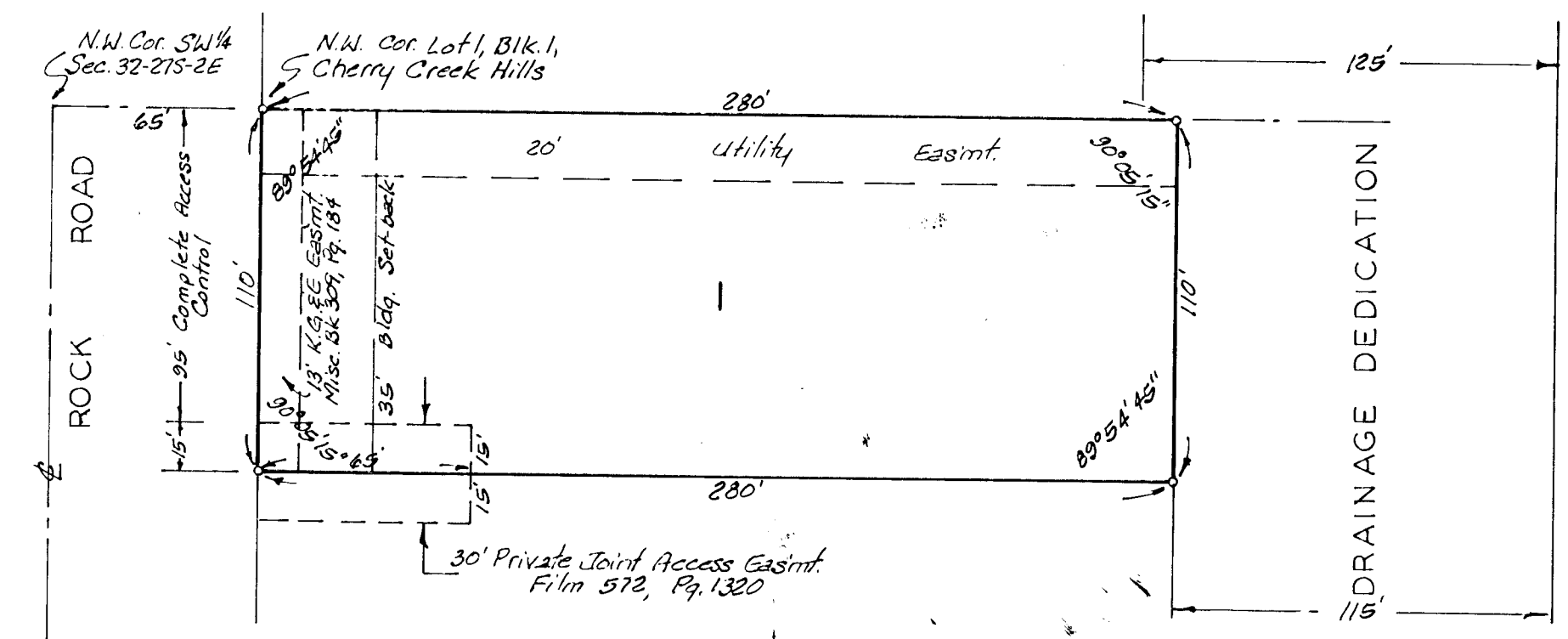


EIGHTH ADDITION TO CHERRY CREEK HILLS

WICHITA, KANSAS.



State of Kansas? ss. We, Baughman Company, P.A., Surveyors in aforesaid county and state do hereby certify that we have surveyed and platted "EIGHTH ADDITION TO CHERRY CREEK HILLS", Wichita, Kansas and that the accompanying plat is a true and correct exhibit of the property surveyed, described as and being a replat of the north 110 feet of Lot 1, Block 1, Cherry Creek Hills an Addition to Wichita, Sedgewick County, Kansas.

All being situated in the SW 1/4 of Sec. 32, Twp. 27-S, R-2-E of the 6th P.M., Sedgewick County, Kansas.

1/28/85
Date
William L. Foster
Surveyor
Baughman Company, P.A.

Know all men by these presents that we the undersigned have caused the land described in the surveyors certificate to be platted into a Lot to be known as "EIGHTH ADDITION TO CHERRY CREEK HILLS", Wichita, Kansas. The utility easements are hereby granted as indicated for the construction and maintenance of all public utilities. All abutters rights of access to or from Rock Road over and across the north 95 feet of the west line of Lot 1, are hereby granted to the City of Wichita, Kansas.

Ted R. Milligan D.D.S., P.A.
President
Ted R. Milligan

State of Kansas? ss. The foregoing instrument was duly acknowledged before me, this 28th day of January, 1985, by Ted R. Milligan, President of Ted R. Milligan D.D.S., P.A., on behalf of the corporation.

My Appt. Exp. 12 May 1988
John H. Perry
Notary Public

We, the undersigned, holders of a mortgage on the above described property do hereby consent to this plat of "EIGHTH ADDITION TO CHERRY CREEK HILLS", Wichita, Kansas.

Prairie State Bank
Dean L. Bush

State of Kansas? ss. The foregoing instrument was acknowledged before me, this 28th day of January, 1985, by Dean L. Bush, Vice-President of Prairie State Bank, on behalf of the corporation.

My Appt. Exp. 12 May 1988
Mark A. Perry
Notary Public

This plat of "EIGHTH ADDITION TO CHERRY CREEK HILLS", Wichita, Kansas, has been submitted to and approved by the Wichita-Sedgewick County Metropolitan Area Planning Commission, Wichita, Kansas.

Dated this 26th day of September, 1984.
Wichita-Sedgewick County Metropolitan Area Planning Commission
James C. Wilson Chairman
Robert A. Lakin Secretary

This plat approved and all dedications shown hereon accepted by the Board of Commissioners of the City of Wichita, Kansas, this 19th day of October, 1985.

Robert G. Knight Mayor
Donald C. Giese City Clerk

This plat approved and all dedications shown hereon accepted by the Board of Commissioners of Sedgewick County, Kansas, this day of , 1985.

Donald E. Brang Chairman
Bernard A. Henjen Commissioner
Tom Scott Commissioner
Don Wright County Clerk

Entered on transfer record this day of , 1985.

Don Wright County Clerk

State of Kansas? ss. This is to certify that this plat has been filed for record in the office of the Register of Deeds, this day of , 1985, at o'clock M; and is duly recorded.

Jeff Krentler Register of Deeds
Ed Resa Deputy