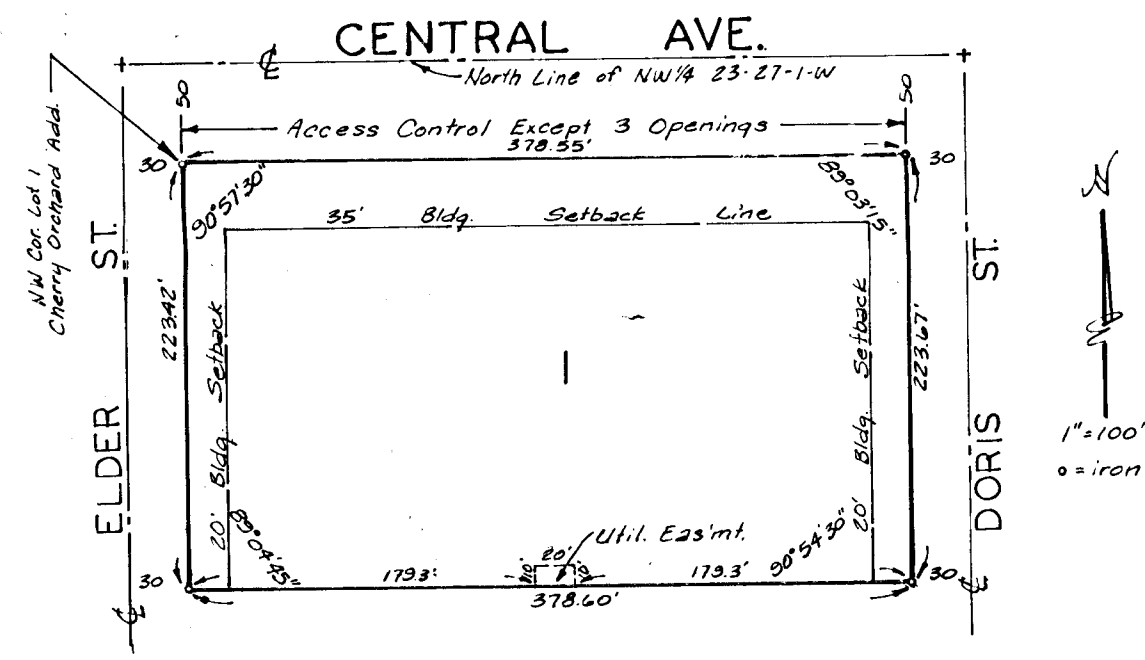
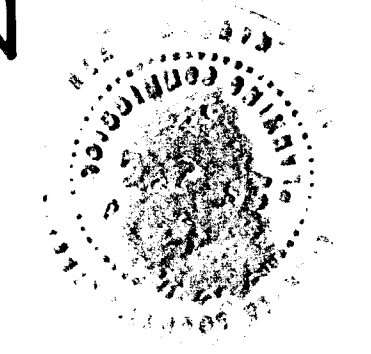


# CHERRY ORCHARD 3RD. ADDITION

WICHITA, KANSAS



This plat of "CHERRY ORCHARD 3RD ADDITION" Wichita, Kansas, has been submitted to and approved by the Wichita-Sedwick County Metropolitan Area Planning Commission, Wichita, Kansas.

Dated this 6<sup>th</sup> day of March, 1986.  
Wichita-Sedwick County Metropolitan Area Planning Commission

David Bajouth Vice Chairman  
David Bajouth

Michael E. Lindebak Secretary  
Michael E. Lindebak

This plat approved and all dedications shown hereon accepted by the Board of Commissioners of the City of Wichita, Kansas, this 12<sup>th</sup> day of March, 1986.

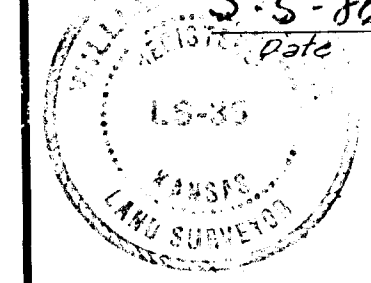
Tony Casado Mayor  
Tony Casado

Dale E. RGA City Clerk  
Dale E. RGA

Entered on transfer record, this \_\_\_\_\_ day of \_\_\_\_\_, 1986.

Don Wright County Clerk  
Don Wright

State of Kansas } s.s.  
Sedwick County } We, Baughman Company, P.A., Surveyors in aforesaid county and state do hereby certify that we have surveyed and platted "CHERRY ORCHARD 3RD ADDITION" Wichita, Kansas, and that the accompanying plat is a true and correct exhibit of the property surveyed, described as being a replat of lot 1, Cherry Orchard Addition, Wichita, Kansas, lot 1 Cherry Orchard 2nd Addition, Wichita, Kansas, and lots 4 and 17, Block 10 Fruitvale Park, Sedwick County, Kansas. All being situated in the N.W. 1/4 Sec 23, Twp 27-S, R. 14W of the 6th P.M., Sedwick County, Kansas. Previous easements are hereby vacated by virtue of K.S.A. 12-512(b).  
S.S. 86 Date \_\_\_\_\_  
Baughman Company, P.A.



William L. Forster Surveyor  
William L. Forster

Know all men by these presents that We, the undersigned have caused the land described in the surveyor's certificate to be platted into a lot to be known as "CHERRY ORCHARD 3RD ADDITION" Wichita, Kansas. An easement is hereby granted as indicated for the construction and maintenance of all public utilities. All abutters rights of access to or from Central Ave, over and across the north line of lot 1 are hereby granted to the City of Wichita provided however that lot 1 shall have access to Central Ave. at 3 points as shall be determined by the City Engineer of Wichita, Kansas.

M.G. Enterprises Inc.  
Marino G. Garci President  
Marino G. Garci

State of Kansas } s.s.  
Sedwick County } The foregoing instrument acknowledged before me this 5th day of May, 1986 by Marino G. Garci President of M.G. Enterprises, Inc. on behalf of the corporation.

Mark A. Sauer Notary Public  
Mark A. Sauer

My App't. Expires 12 May 1988

State of Kansas } s.s.  
Sedwick County } This is to certify that this plat has been filed for record in the office of the Register of Deeds, this \_\_\_\_\_ day of \_\_\_\_\_, 1986, at \_\_\_\_\_ o'clock \_\_\_\_\_ M, and is duly recorded.

Pat Kettler Register of Deeds  
Pat Kettler

Ed Resa Deputy  
Ed Resa

We, the undersigned, holders of a mortgage on the above described property do hereby consent to this plat of "CHERRY ORCHARD 3RD ADDITION," Wichita, Kansas.

National Bank of Wichita  
Walter Thomas, J. Lee Stewart

State of Kansas } s.s.  
Sedwick County } The foregoing instrument acknowledged before me this 5th day of May, 1986 by Walter Thomas, J. Lee Stewart on behalf of the National Bank of Wichita.

Walter Thomas Notary Public  
Walter Thomas

My App't. Expires \_\_\_\_\_  
[Stamp]