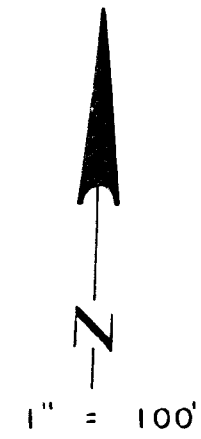
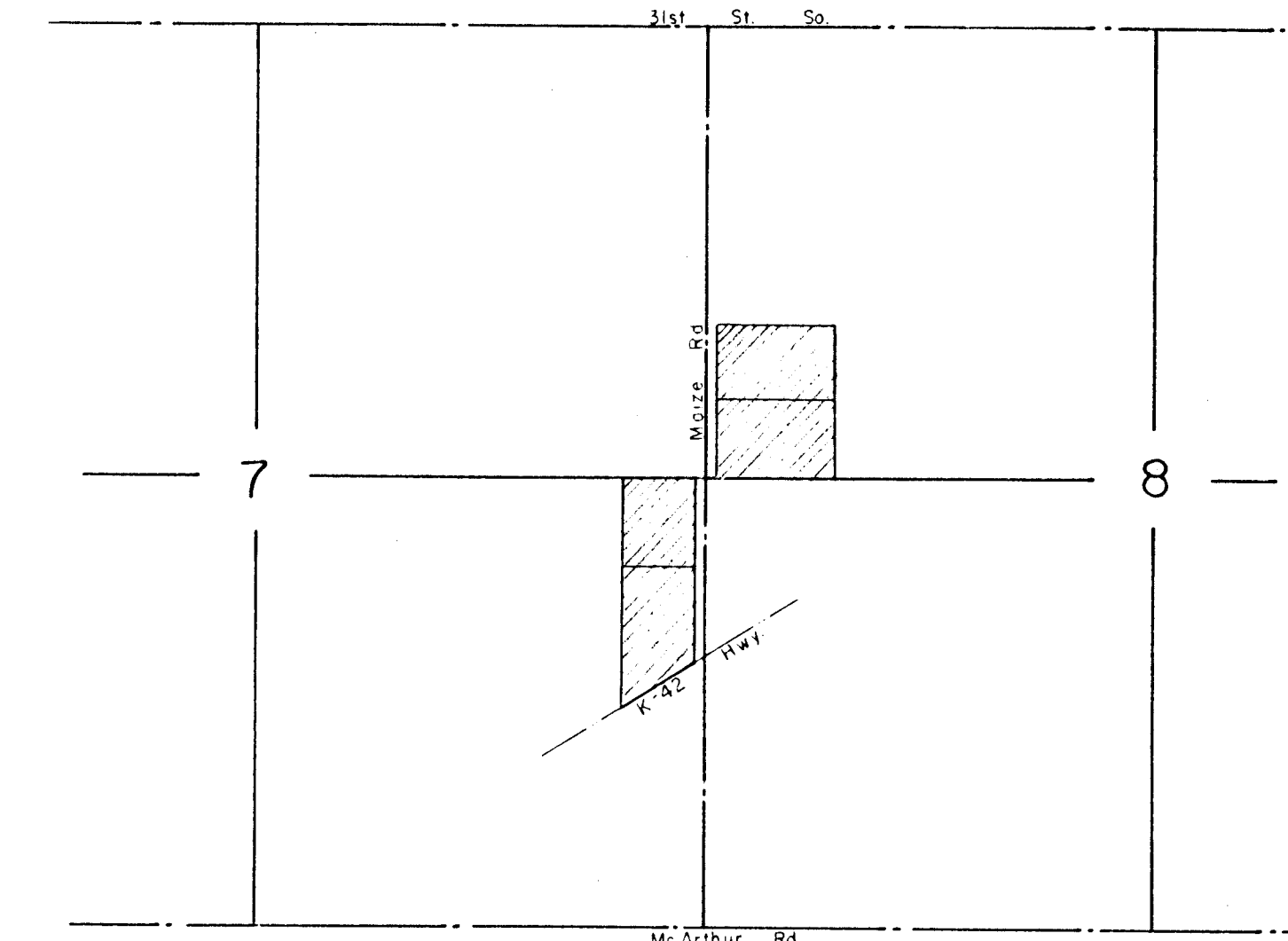


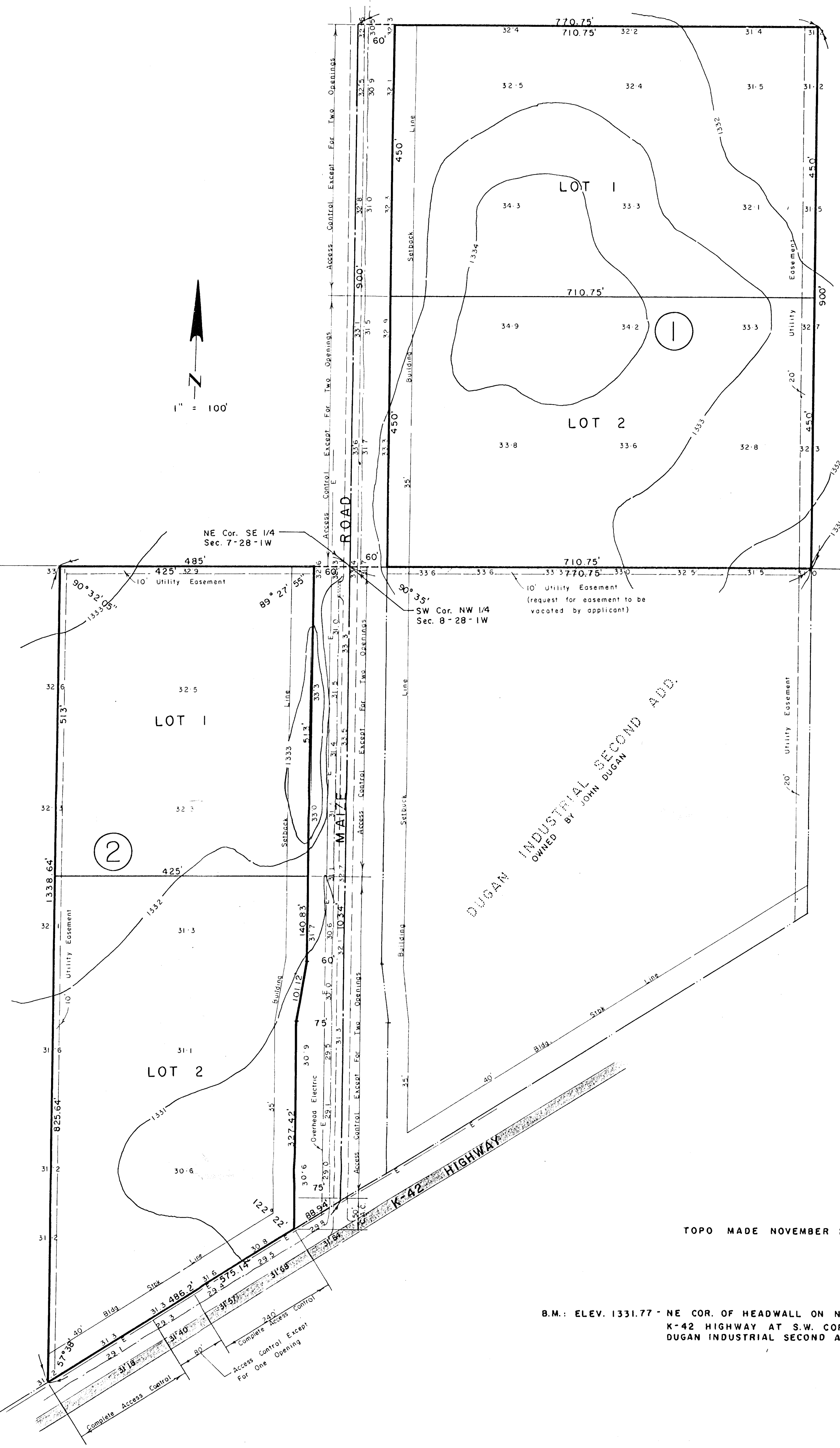
"UNPLATTED"



OWNED BY JOHN DUGAN



VICINITY MAP
1" = 1000'



OWNED BY JOHN DUGAN

PRELIMINARY PLAT
DUGAN INDUSTRIAL THIRD ADDITION
SEDGWICK COUNTY, KANSAS

FOR: JOHN DUGAN
R.R. 1, BOX 37
CLEARWATER, KS.
67026

TOPO MADE NOVEMBER 20, 1986.

B.M.: ELEV. 1331.77 - NE COR. OF HEADWALL ON N.S.
K-42 HIGHWAY AT S.W. COR. OF
DUGAN INDUSTRIAL SECOND ADDITION.

LOWELL D. HIGH, L.S.
1542 S. ST. FRANCIS
WICHITA, KS. 67211
DECEMBER 5, 1986