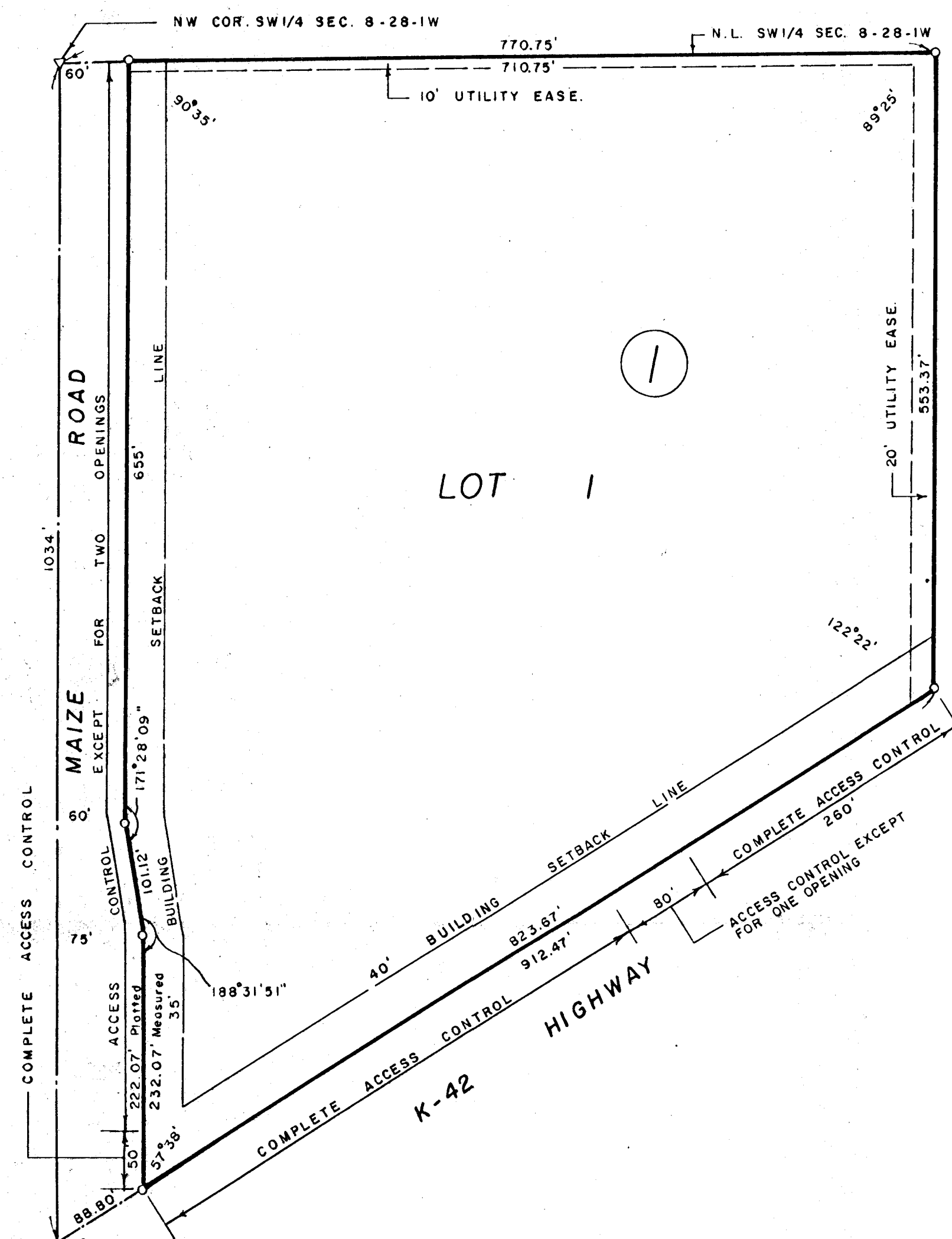


DUGAN INDUSTRIAL SECOND ADDITION

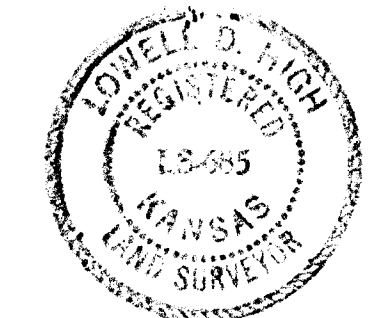
SEDGWICK COUNTY, KANSAS



State of Kansas, County of Sedgwick, SS.

I, Lowell D. High, Land Surveyor in the State of Kansas, do hereby certify that I have surveyed and platted "DUGAN INDUSTRIAL SECOND ADDITION", Sedgwick County, Kansas, and that the accompanying plat is A REPLAT OF and a true and correct exhibit of said survey described as follows: All of Lots 1, 2, 3, and 4, Block 1, and Lots 1 and 2, Block 2, Dugan Industrial Addition, Sedgwick County, Kansas, together with all of Southwest Drive lying within said Dugan Industrial Addition being vacated and replatted by virtue of K.S.A. 1970 Supp. 12-512-(b).

Lowell D. High
Lowell D. High, L.S. 7-5-83



Know all men by these presents that we, John E. Dugan and Marilyn K. Dugan, husband and wife, have caused the land described in the Land Surveyor's certificate to be platted into a lot and block to be known as "DUGAN INDUSTRIAL SECOND ADDITION", Sedgwick County, Kansas. Utility easements as indicated on the plat are hereby granted for the construction and maintenance of all public utilities.

All abutter's rights of access to or from Maize Road, over and across the south 50 feet of the west line of Lot 1, Block 1, are hereby granted to the appropriate governing body.

All abutter's rights of access to or from Maize Road, over and across the west line of Lot 1, Block 1, except the south 50 feet thereof, are hereby granted to the appropriate governing body, provided, however, that Lot 1, Block 1, shall have access to Maize Road at two locations to be designated by the appropriate engineer.

All abutter's rights of access to or from K-42 Highway, over and across the southerly line of Lot 1, Block 1, except the westerly 80 feet of the easterly 340 feet thereof, are granted to the appropriate governing body, provided, however, that Lot 1, Block 1, shall have access to K-42 Highway at one location to be designated by the appropriate engineer.

John E. Dugan

Marilyn K. Dugan

State of Kansas, County of Sedgwick, SS.

Be it remembered that on this 5th day of July, 1983, before me a notary public in aforesaid county and state came John E. Dugan and Marilyn K. Dugan, husband and wife, to me known to be the same persons who executed the foregoing instrument of writing and duly acknowledged the execution of the same. In testimony thereof, I have hereunto set my hand and affixed my notarial seal the day and year above written.

Wesley D. Wells, Notary Public

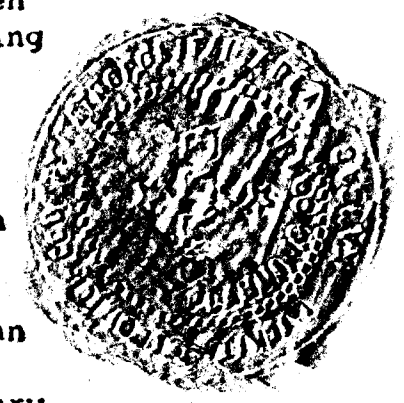
My Commission Expires: _____

This plat of "DUGAN INDUSTRIAL SECOND ADDITION", Sedgwick County, Kansas, has been submitted to and approved by the Wichita-Sedgwick County Metropolitan Area Planning Commission, Wichita, Kansas.

Dated this 21st day of April, 1983.

Wichita-Sedgwick County Metropolitan Area Planning Commission

By *David Boyouth*, Chairman
Robert A. Lakin, Secretary



This plat approved and all dedications shown hereon, if any, accepted by the Board of County Commissioners of Sedgwick County, Kansas, this _____ day of _____, 1983.

Jack Sproff, Chairman

DONALD B. GRASS, Commissioner

Tom Scott, Commissioner

ATTEST:

Dorothy K. White, County Clerk

Entered on transfer record this _____ day of _____, 1983.

Dorothy K. White, County Clerk

State of Kansas, County of Sedgwick, SS.

This is to certify that this instrument was filed for record in the Register of Deeds Office, at _____ o'clock, _____ m., on the _____ day of _____, 1983.

Bette F. McCort, Register of Deeds

PAT KATNER, Deputy

This plat approved and all dedications shown hereon, if any, accepted by the Board of City Commissioners of the City of Wichita, Kansas, this 12th day of July, 1983.

Margaret Wright, Mayor
Donald C. Gistick, City Clerk

