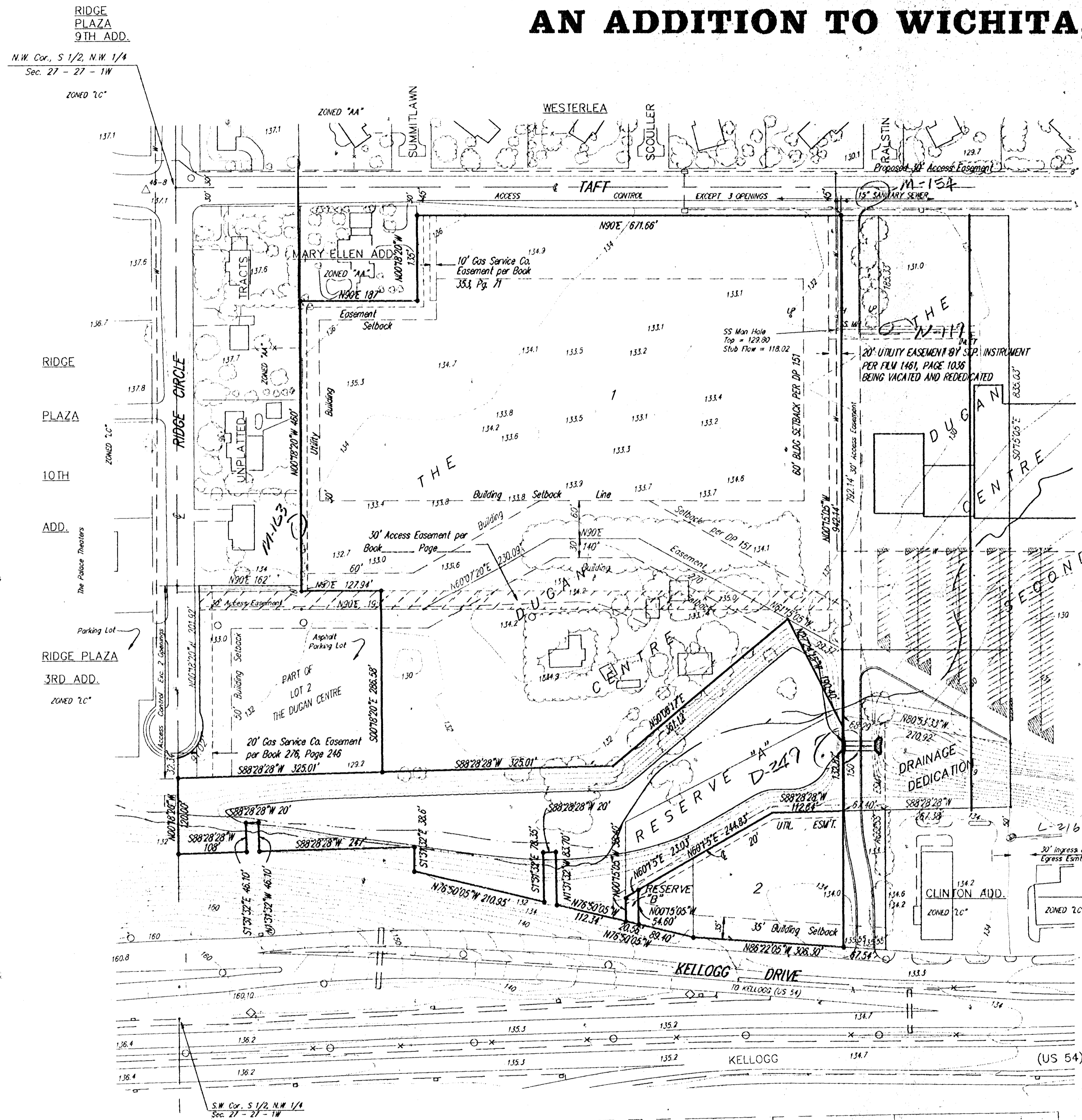


SKETCH PLAT

THE DUGAN CENTRE THIRD

AN ADDITION TO WICHITA, KANSAS



LEGEND:

CONTOURS @ 2' INTERVALS

• = #4 REBAR W/ "BAUGHMAN" CAP (SET)

OWNER:

Kenneth Reichenberger
501 S. Summitlawn
Wichita, Kansas 67209

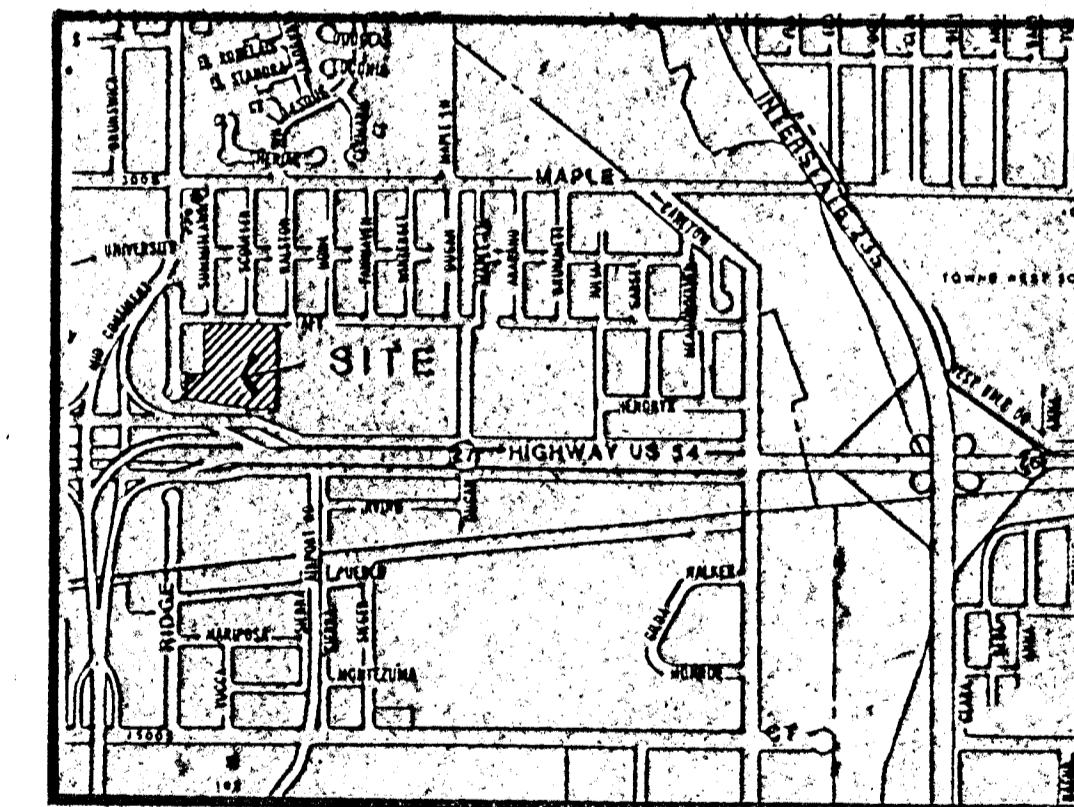
LEGAL DESCRIPTION:

PART OF LOTS 1, 2, & 3,
THE DUGAN CENTRE
WICHITA, KANSAS

BENCHMARK:

R.R. SPIKE IN SOUTH SIDE OF
POWER POLE AT THE N.W. CORNER
OF TAFT AND DUGAN
ELEV. = 120.39' CITY DATUM
ELEV. = 1307.79' M.S.L.

R.R. SPIKE IN THE S.E. SIDE OF
POWER POLE AT THE N.W. CORNER
OF TAFT AND SUMMITLAWN
ELEV. = 137.67' CITY DATUM
ELEV. = 1325.07' M.S.L.



VICINITY MAP

*SAN. SEW.
M-163, M-152, N-119
STORM SEW
D-249*

DIAMOND 2ND ADD. <small>ZONED "C"</small>	DIAMOND 3RD ADD. <small>ZONED "C"</small>	DIAMOND ADD. <small>ZONED "C"</small>	RESERVE C <small>ZONED "C"</small>
--	--	--	---------------------------------------

April 17, 1999