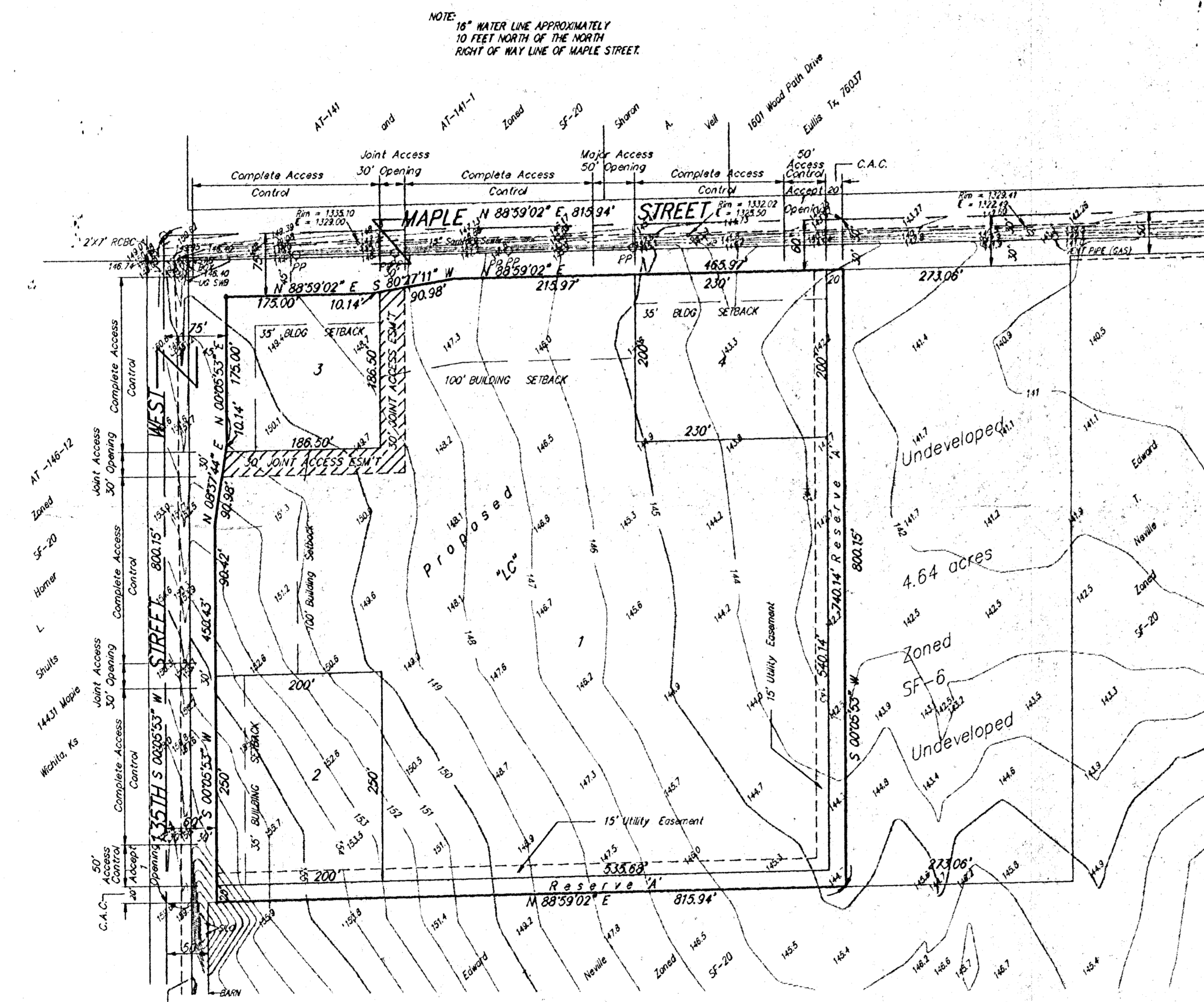


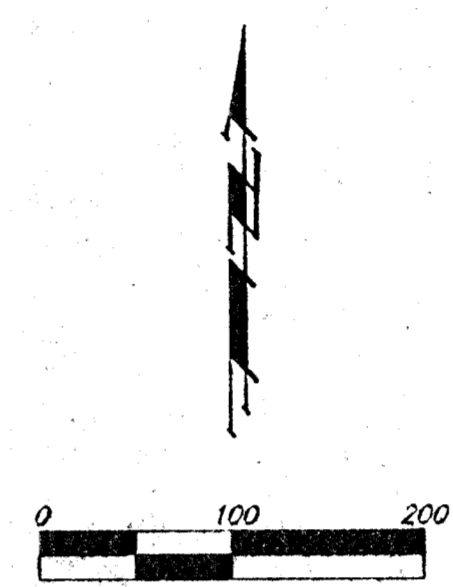
PRELIMINARY PLAT

AUBURN HILLS COMMERCIAL ADDITION

WICHITA, SEDGWICK COUNTY, KANSAS



NOTE: 18" WATER LINE APPROXIMATELY 10 FEET NORTH OF THE NORTH RIGHT OF WAY LINE OF MAPLE STREET.



- = #4 REBAR W/ BAUGHMAN CAP (SET)
- = Power Pole
- ⊗ = Sanitary Sewer Man Hole
- ⊕ = Mail Box

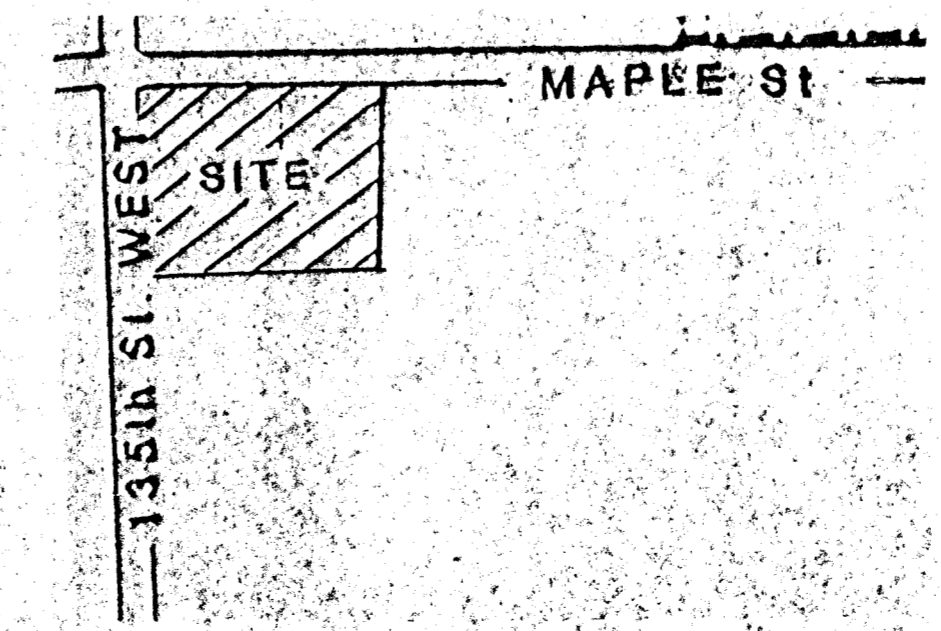
LEGAL
 The North 800 feet of the West 815.94 feet of the NW 1/4 of Section 25, Twp.-27-S, R-2-W of the 6th P.M., Sedgwick County, Kansas.

BENCHMARK
 135th and Maple, City of Wichita Bench Mark. Northeast corner intersection on headwall, 34 feet Southwest to iron in Section Corner. Elev. 150.20 (City Datum)

OWNERS
 Edward T. Neville
 9625 Maple
 Wichita, KS 67209
 (316) 722-1730

Note:
 See Community Unit Plan DP-219, For Additional Building Setbacks.

Note:
 Reserve "A" is to be Reserve for Landscape and A Neighborhood Buffer.



VICINITY MAP