

DRAINAGE CONCEPT

AUBURN HILLS COMMERCIAL ADDITION

WICHITA, SEDGWICK COUNTY, KANSAS

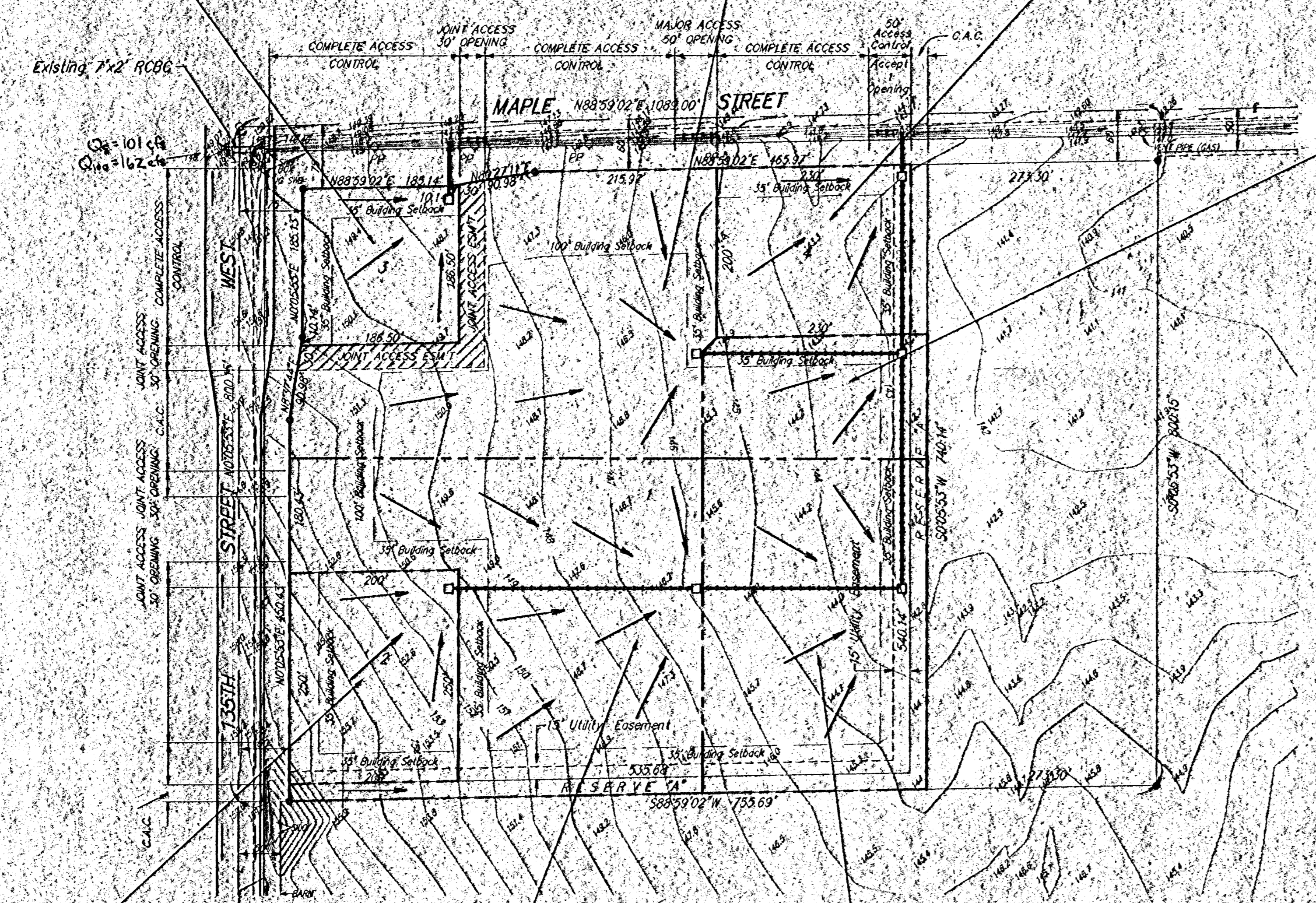
DRAINAGE AREA = 0.78 Ac.
 C = 0.9
 $Q_p = 3.2$ cfs
 $Q_{100} = 5.2$ cfs

DRAINAGE AREA = 2.94 Ac.
 C = 0.9
 $Q_p = 12.1$ cfs
 $Q_{100} = 19.5$ cfs

DRAINAGE AREA = 1.08 Ac.
 C = 0.9
 $Q_p = 4.4$ cfs
 $Q_{100} = 7.1$ cfs

DRAINAGE AREA = 0.90 Ac.
 C = 0.9
 $Q_p = 3.7$ cfs
 $Q_{100} = 6.0$ cfs

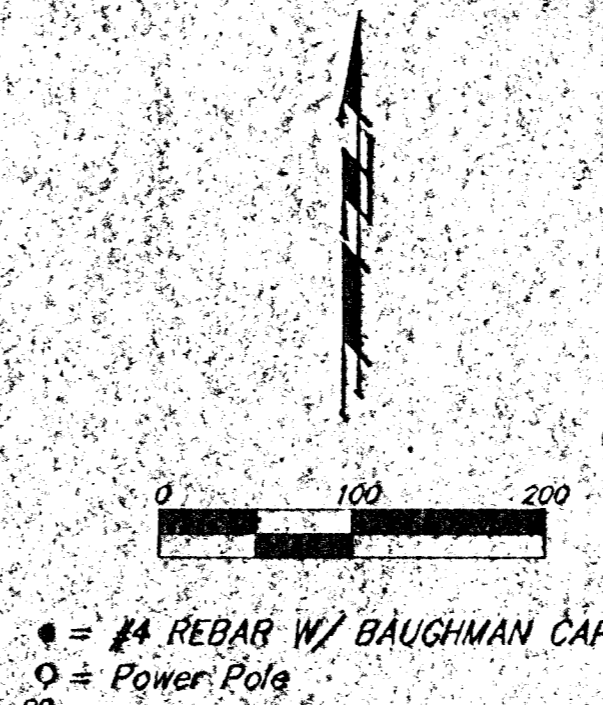
NOTE: 16" WATER LINE APPROXIMATELY 10 FEET NORTH OF THE NORTH RIGHT OF WAY LINE OF MAPLE STREET.



DRAINAGE AREA = 1.15 Ac.
 C = 0.9
 $Q_p = 4.7$ cfs
 $Q_{100} = 7.6$ cfs

DRAINAGE AREA = 3.35 Ac.
 C = 0.9
 $Q_p = 13.8$ cfs
 $Q_{100} = 22.2$ cfs

DRAINAGE AREA = 2.40 Ac.
 C = 0.9
 $Q_p = 9.9$ cfs
 $Q_{100} = 15.9$ cfs



● = #4 REBAR W/ BAUGHMAN CAP (SET)
 ○ = Power Pole
 PP

LEGAL
 The North 800 feet of the West 1088.79 feet of the NW 1/4 of Section 25, Twp. 27-S, R-2-W of the 6th P.M., Sedgwick County, Kansas.

BENCHMARK
 135th and Maple, City of Wichita Bench Mark, Northeast corner intersection on headwall 34 feet Southwest to iron in Section Corner. Elev. 150.20 (City Datum)

OWNERS
 Edward T. Neville
 9625 Maple
 Wichita, KS 67209
 (316) 722-1730

