

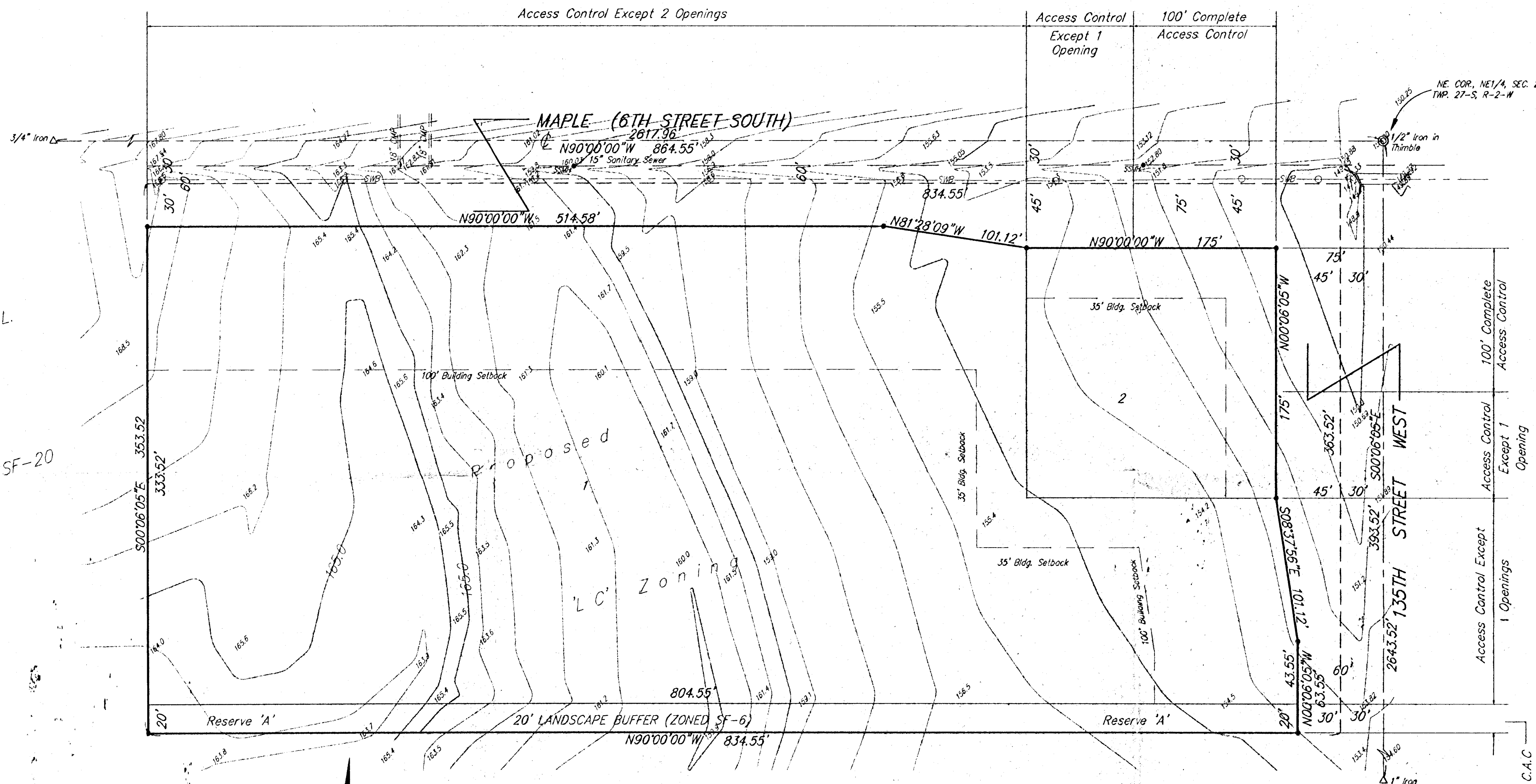
ONE STEP - FINAL

AUBURN HILLS COMMERCIAL 2nd ADDITION

SEDGWICK COUNTY, KANSAS

State of Kansas) SS We, Baughman Company, P.A., Surveyors in
Sedgwick County) aforesaid County and State do hereby certify that we have surveyed
and platted "AUBURN HILLS COMMERCIAL 2nd ADDITION", Sedgwick
County, Kansas, and that the accompanying plat is a true and
correct exhibit of the property surveyed, described as follows: The
east 864.55 feet of the north 413.52 feet of the NE 1/4 of Sec 26,
Twp. 27-S, R-2-W of the 6th P.M., Sedgwick County, Kansas.

Existing public easements and dedications being vacated by virtue
of K.S.A. 12-512(b).
Baughman Co., P.A.



Gregory F. Severns
Surveyor

Know all men by these presents that we,
the undersigned, have caused the land in the surveyors certificate
to be platted into Lots and Streets to be known as "AUBURN HILLS
COMMERCIAL 2nd ADDITION", Sedgwick County, Kansas. Reserve A is
and a private screening wall. The streets are hereby dedicated to and
for the use of the public. All abutters rights of access shall be as shown
on the face of the plat.

Auburn Hills, Inc.

Jay W. Russell
President

State of Kansas) SS The foregoing instrument acknowledged be-
fore me, this _____ day of _____, 1996, by Jay W.
Russell, President, Auburn Hills, Inc., on behalf of the corporation.

Notary Public
My App't. Exp. _____

This plat approved and all dedications
shown hereon accepted by the Board of Commissioners of
Sedgwick County, Kansas, this _____ day of _____, 1996.

- _____
Thomas C. Winters
Chairman
- _____
Melody Miller
Chair Pro-Tem
- _____
Betsy Gwin
Commissioner
- _____
Paul W. Hancock
Commissioner
- _____
Mark F. Schroeder
Commissioner
- _____
Susan E. Crockett-Spoon
County Clerk

This plat approved and all dedications
shown hereon accepted by the City Council of the City of Wichita,
Kansas, this _____ day of _____, 1996.

- _____
Bob Knight
Mayor
- _____
Pat Burnett
City Clerk

State of Kansas) SS This is to certify that this plat has been
Sedgwick County) filed for record in the office of the Register of Deeds, this _____ day
of _____, 1996, at _____ o'clock _____ M.; and is duly
recorded.

- _____
Pat Kettler
Register of Deeds
- _____
Ed Resa
Deputy

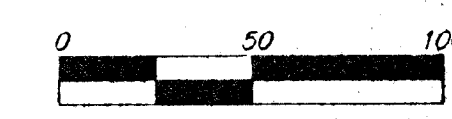
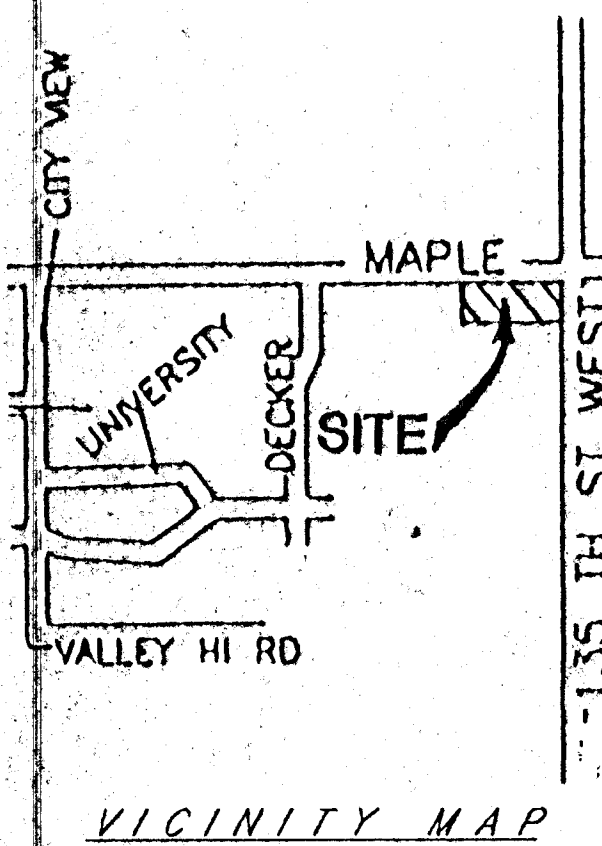
Entered on transfer record this _____ day
of _____, 1996.

- _____
John C. Frye
Chairman
- _____
Marvin S. Krout
Secretary

This plat of "AUBURN HILLS COMMERCIAL
2nd ADDITION", Sedgwick County, Kansas has been submitted to
and approved by the Wichita, Sedgwick County Metropolitan Area
Planning Commission, Wichita, Kansas.
Dated this _____ day of _____, 1996.
Wichita-Sedgwick County Metropolitan Area Planning Commission

NOTE:
See Community Unit Plan (DP-219)
for additional building setbacks.

BENCH MARK
City of Wichita Bench Mark Disc, 30' North and 15' East
of the intersection of both centerlines at Maple Street
and 135th Street West.
City Datum: Elevation 150.20



- = #4 Rebar w/ Baughman Cap (SET)
- = Power Pole
- SMH = Sanitary Sewer ManHole

November 1, 1996

BAUGHMAN COMPANY P. A.
ENGINEERING, SURVEYING, & PLANNING
(316)-282-7271 • 315 ELLIS • WICHITA, KANSAS 67211