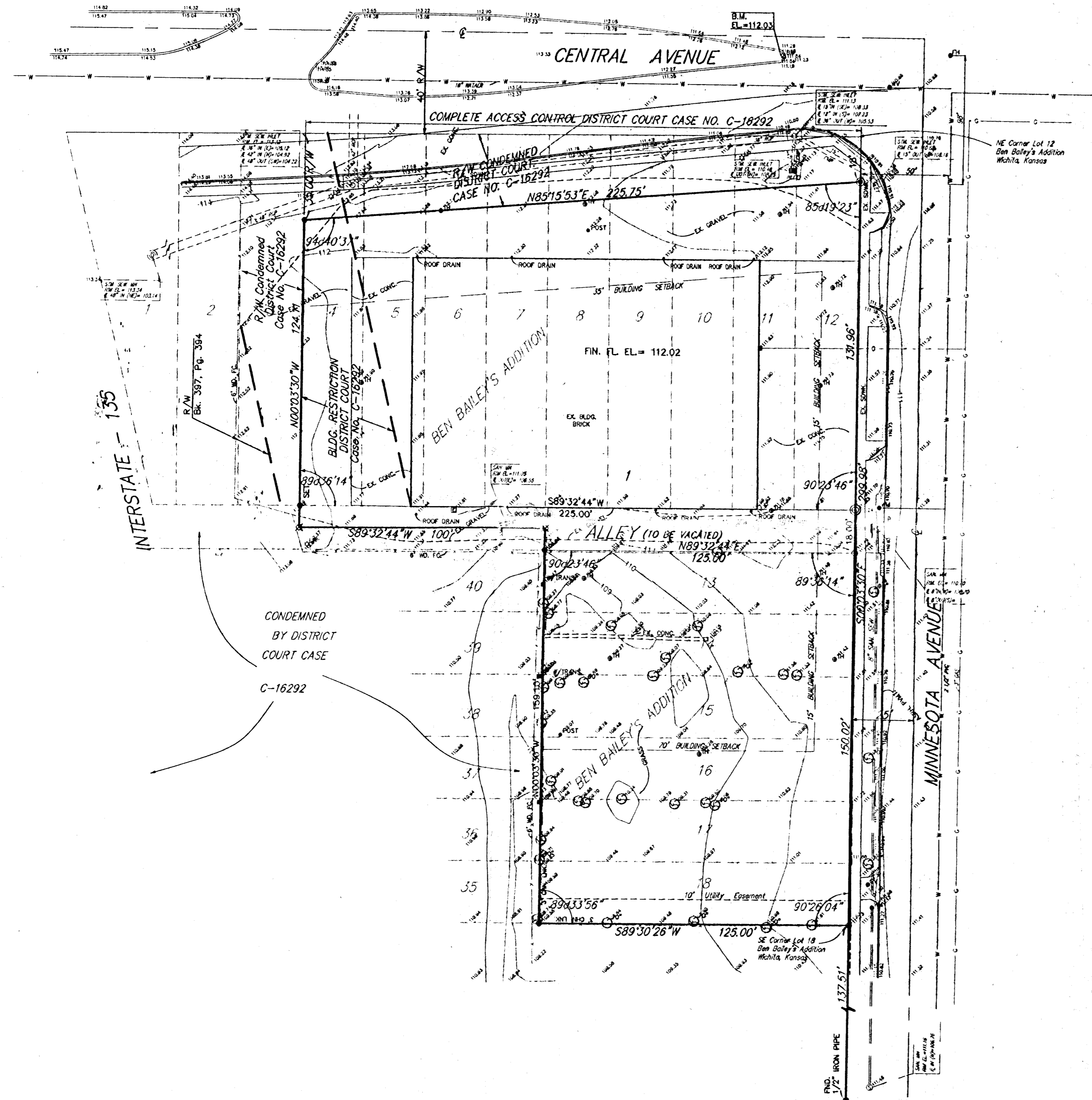


SKETCH PLAT
AUTOZONE 2nd ADDITION
 WICHITA, SEDGWICK COUNTY, KANSAS

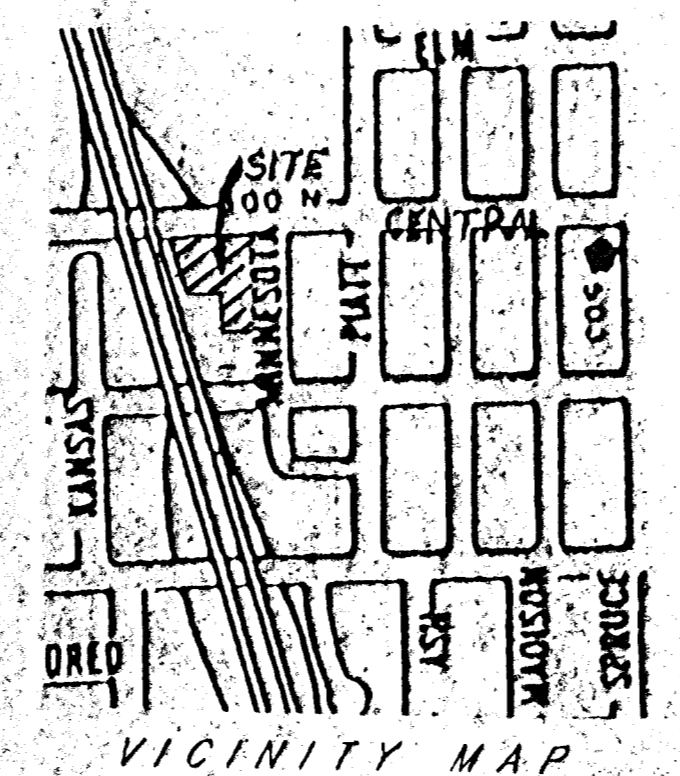


LEGAL DESCRIPTION
 A replat of Lots 4 through 12 inclusive, Ben Bailey's Addition to Wichita, Sedgwick County, Kansas, Except that portion condemned for street purposes in District Court Case C-16292, together with Lots 13 through 18 inclusive, in said Ben Bailey's Addition, together with all of the alley lying between said Lots 8, 9, 10, 11, 12, and 13, together with 1/2 of the alley lying south of and adjacent to said Lots 4, 5, 6, and 7, all as platted in said Ben Bailey's Addition.

OWNER
 AUTOZONE, INC., A NEVADA CORPORATION
 ATTN: MR. THOMAS HEIGLE
 60 MADISON, 10th FLOOR
 MEMPHIS, TN 38103

BENCHMARK
 □ CUT TOP OF CURB AT E. END OF MEDIAN
 AT INTERSECTION OF CENTRAL & MINNESOTA
 ELEV. = 112.03 CITY DATUM

- LEGEND**
- = 1/2" IRON (FOUND)
 - = #5 REBAR (FOUND)
 - ⊠ = #4 REBAR W/ "BAUGHMAN" GAP (SET)
 - ⊞ = #4 REBAR (FOUND)
 - ⊙ = 1" IRON (FOUND)
- SANITARY SEWER MANHOLE
 - DECIDUOUS TREE
 - BRUSH & TIMBER
 - POWER POLE
 - WATER METER
 - WATER VALVE
 - TEST HOLE
 - TELEPHONE PEDESTAL
 - ELECTRIC PEDESTAL
 - LIGHT POLE
 - STORM SEWER MANHOLE
 - TELEPHONE MANHOLE
 - GUY WIRE
 - GAS LINE
 - UNDER GROUND TELEPHONE
 - SANITARY SEWER LINE
 - WATER LINE
 - BENCH MARK
 - FENCE
 - GAS METER



LOT	ELEVATION	
	CITY DATUM	MSL
1	111.1	1208.5