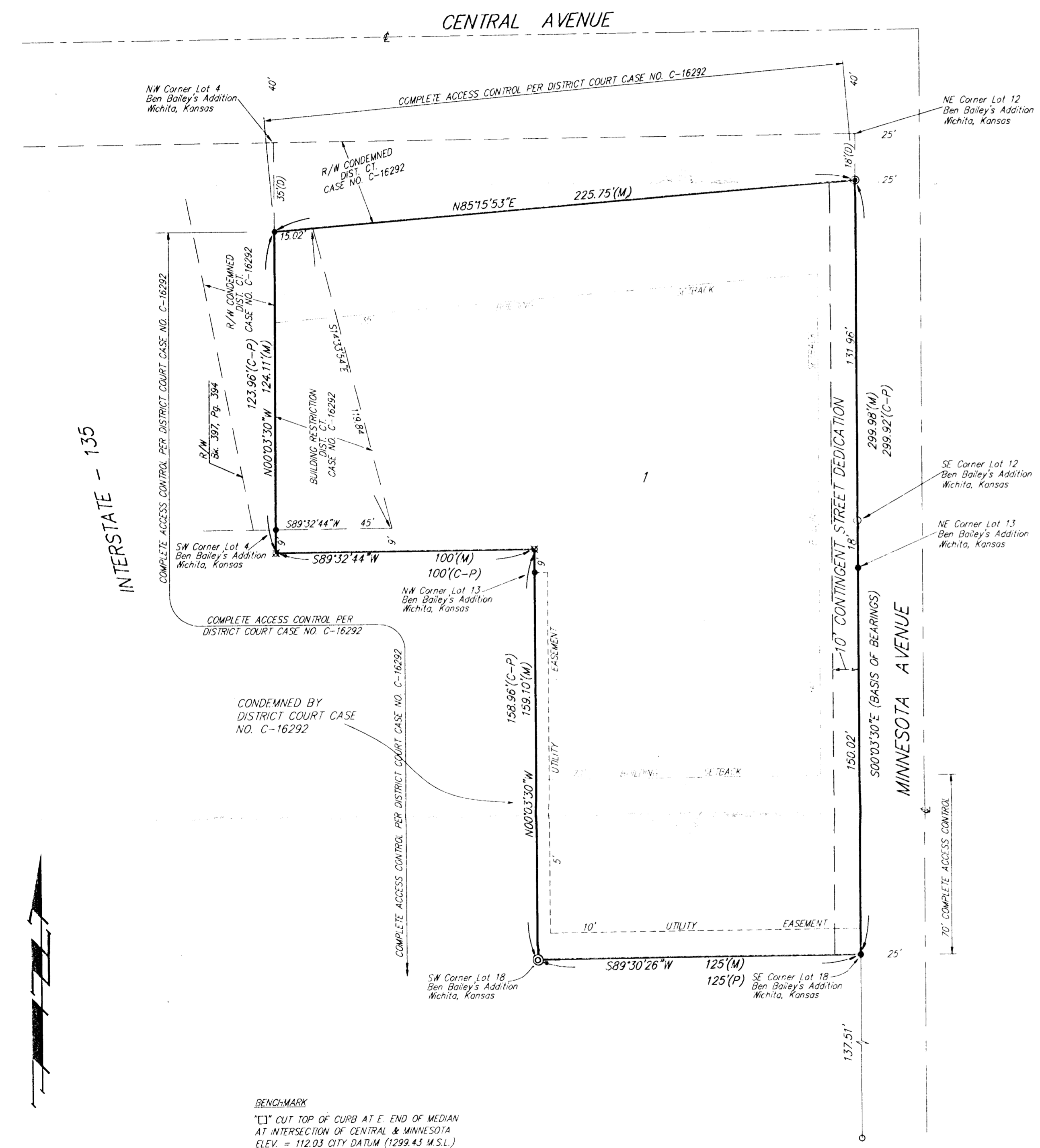


# AUTOZONE 2ND ADDITION

## WICHITA, SEDGWICK COUNTY, KANSAS



**BENCHMARK**  
 "1" CUT TOP OF CURB AT E. END OF MEDIAN  
 AT INTERSECTION OF CENTRAL & MINNESOTA  
 ELEV. = 112.03 CITY DATUM (1299.43 M.S.L.)

LOT	ELEVATION	
	CITY DATUM	MSL
1	111.1	1298.5

- LEGEND**
- = 1/2" IRON (FOUND)
  - = #5 REBAR (FOUND)
  - ⊗ = #4 REBAR W/ TAUGHMAN CAP (SET)
  - = #4 REBAR (FOUND)
  - ⊙ = BOTTOM 2" STEEL BRACE POST ON CORNER

State of Kansas) SS We, Baughman Company, P.A., Surveyors in  
 Sedgwick County) do hereby certify that we have surveyed  
 in aforesaid County and State do hereby certify that we have surveyed  
 and platted "AUTOZONE 2ND ADDITION", Wichita, Sedgwick County, Kansas  
 and that the accompanying plat is a true and correct exhibit of the  
 property surveyed, described as and being a replat of Lots 4 through  
 12 inclusive, Ben Bailey's Addition to Wichita, Sedgwick County, Kansas,  
 EXCEPT that portion condemned for highway purposes in District Court  
 Case C-16292, TOGETHER with Lots 13 through 18 inclusive, in Ben  
 Bailey's Addition, TOGETHER with all of the alley lying between said  
 Lots 8, 9, 10, 11, 12, and 13, TOGETHER with 1/2 of the alley lying  
 south of and adjacent to said Lots 4, 5, 6, and 7, all as platted  
 in said Ben Bailey's Addition.

Existing public easements and dedications being vacated by virtue  
 of K.S.A. 12-512(b).  
 Baughman Company, P.A.

Gregory F. Severns, Surveyor

Know all men by these presents that we,  
 the undersigned, have caused the land in the surveyors certificate to  
 be platted into a lot to be known as "AUTOZONE 2ND ADDITION", Wichita, Sedgwick  
 County, Kansas. The utility easements are hereby granted as indicated for the  
 construction and maintenance of all public utilities. The Minnesota Avenue  
 Contingent Street Dedication shall become effective in the event that the  
 City of Wichita determines a need for the right-of-way for any  
 street related purposes. All abutters rights of access to or from  
 Minnesota Avenue over and across the east line of Lot 1 are hereby  
 granted to the City of Wichita, Kansas provided, however, that Lot 1  
 shall have access to Minnesota Avenue over all except the south  
 70 feet of the east line of said Lot 1. The Minimum Building Pad  
 Elevation for the lowest opening to the structures shall be 111.1 City  
 Datum, (1298.5 M.S.L.).  
 Autozone, Inc., a Nevada Corporation

LAWRENCE EVANS, Executive Vice President.

Shelby Co. Sedgwick) SS The foregoing instrument acknowledged be-  
 fore me, this 13th day of JANUARY, 1997, by LAWRENCE E. EVANS,  
 EXECUTIVE V.P., of Autozone, Inc., a Nevada Corporation, on behalf of  
 the corporation.

Abraham J. Musselman, Notary Public  
 My App't. Exp. \_\_\_\_\_ My Commission Expires March 25 1997

This plat of "AUTOZONE 2ND ADDITION", Wichita,  
 Sedgwick County, Kansas has been submitted to and approved by  
 the Wichita-Sedgwick County Metropolitan Area Planning Commission,  
 Wichita, Kansas.  
 Dated this 31st day of October, 1996.  
 Wichita-Sedgwick County Metropolitan Area Planning Commission

John C. Frye, Chairman  
  
 Marvin S. Krout, Secretary

This plat approved and all dedications  
 shown hereon accepted by the City Council of the City of Wichita,  
 Kansas, this \_\_\_\_\_ day of \_\_\_\_\_, 199\_\_.

\_\_\_\_\_ Mayor  
 Bob Knight  
 \_\_\_\_\_ City Clerk  
 Pat Burnett

Entered on transfer record this \_\_\_\_\_ day  
 of \_\_\_\_\_, 199\_\_.

\_\_\_\_\_ County Clerk  
 Susan E. Crockett-Spoon

State of Kansas) SS This is to certify that this plat has been  
 Sedgwick County) filed for record in the office of the Register of Deeds, this \_\_\_\_\_ day  
 of \_\_\_\_\_, 199\_\_, at \_\_\_\_\_ o'clock \_\_\_\_\_ M.; and is duly recorded.

\_\_\_\_\_ Register of Deeds  
 Pat Kettler  
 \_\_\_\_\_ Deputy  
 Ed Resa

