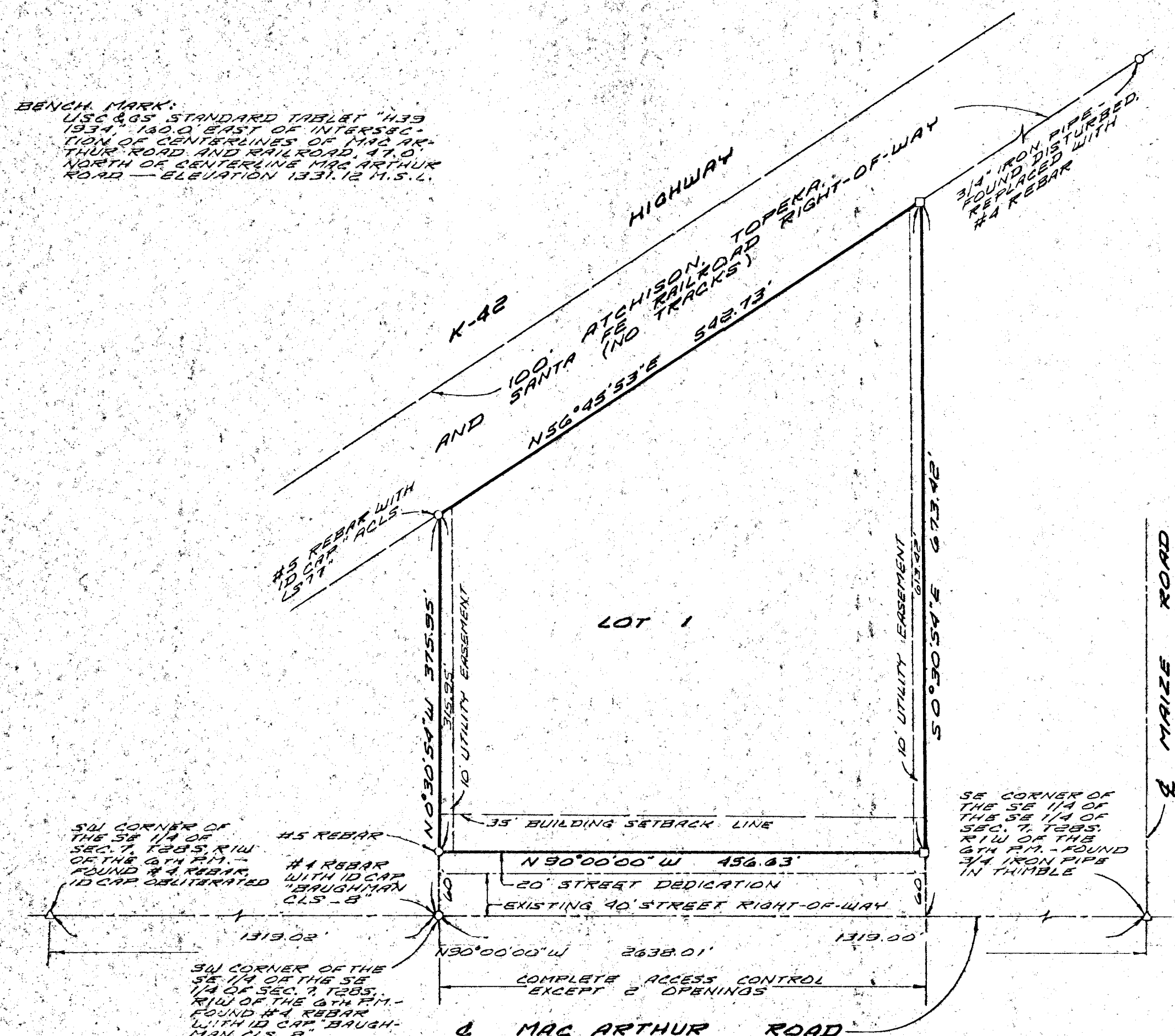


BAALMANN THIRD ADDITION SEDGWICK COUNTY, KANSAS

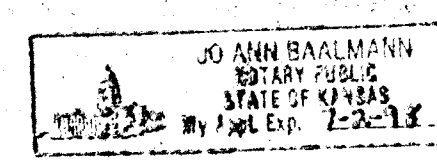


Know all men by these presents that T & H Properties, LLC, owner of the land described in the Surveyor's Certificate, by its President, Harold Baalman, has caused the same to be surveyed and platted into a Lot and a Street, to be known as "BAALMANN THIRD ADDITION", Sedgwick County, Kansas. Easements are hereby granted for the construction and maintenance of all public utilities. The Street is hereby dedicated to and for the use of the public. All abutters' rights of access to or from MacArthur Road over and across the south line of Lot 1 are hereby granted to the appropriate Governing Body, provided, however, that Lot 1 shall have access to MacArthur Road at two locations, said locations to be determined by the appropriate Engineer.

Harold Baalman
Harold Baalman, President
T & H Properties, LLC

State of Kansas)
Sedgwick County) ss
This instrument was acknowledged before me this 23 day of October, 1995, by Harold Baalman as President of T & H Properties, LLC.

John Baalman
John Baalman, Notary Public
My Commission Expires: 1-2-98

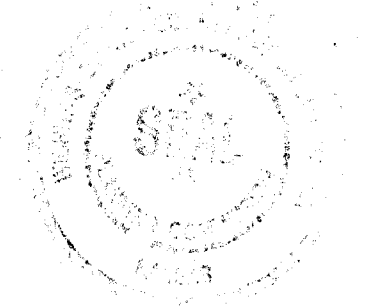


This plat of "BAALMANN THIRD ADDITION", Sedgwick County, Kansas, has been submitted to and approved by the Wichita-Sedgwick County Metropolitan Area Planning Commission, Wichita, Kansas.

Dated this 28th day of September, 1995.

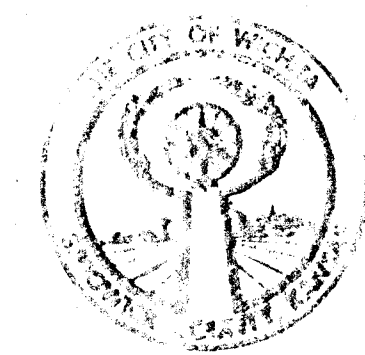
WICHITA-SEDGWICK COUNTY
METROPOLITAN AREA PLANNING COMMISSION

John W. McKay, Jr.
John W. McKay, Jr., Chairman
Marvin S. Krout
Marvin S. Krout, Secretary



This plat approved and all dedications shown hereon are accepted by the City Council of the City of Wichita, Kansas, this 21st day of November, 1995.

WICHITA CITY COUNCIL
Bob Knight
Bob Knight, Mayor
Tom Schneider
Tom Schneider, Deputy City Clerk
for Pat Burnett



This plat approved and all dedications shown hereon accepted by the Board of County Commissioners of Sedgwick County, Kansas, this _____ day of _____, 1995.

BOARD OF COUNTY COMMISSIONERS
_____, Chairman
Mark F. Schroeder
_____, Chairman Pro Tem
Thomas G. Winters
_____, Commissioner
Betsy Gwin
_____, Commissioner
Paul W. Hancock
_____, Commissioner
Melody C. Miller
Attest: _____, County Clerk
Susan Crockett-Spoon

Entered on transfer record this _____ day of _____, 1995.
_____, County Clerk
Susan Crockett-Spoon

State of Kansas)
Sedgwick County) ss
This is to certify that this instrument was filed for record in the Register of Deeds Office on the _____ day of _____, 1995, at _____ o'clock _____ M.
_____, Register of Deeds
Pat Kettler
_____, Chief Deputy
Ed Resa

State of Kansas)
Sedgwick County) ss
Terra Tech Land Surveying, Inc., a corporation registered and authorized to practice Land Surveying in the State of Kansas, hereby certifies that it has surveyed and platted "BAALMANN THIRD ADDITION", Sedgwick County, Kansas, and the accompanying plat is a true and correct exhibit of such survey described as:
A tract of land in the Southeast Quarter of the Southeast Quarter of Section 7, Township 28 South, Range 1 West of the Sixth Principal Meridian, Sedgwick County, Kansas, being more particularly described as follows: **BEGINNING** at the Southwest corner of said Southeast Quarter of the Southeast Quarter of said Section 7; thence Northerly, on the West line of said Southeast Quarter of the Southeast Quarter, on an assumed bearing of North 0°30'54" West, a distance of 375.95 feet to the Southerly right-of-way line of the Atchison, Topeka and Santa Fe Railroad; thence Northeasterly, on said right-of-way line, North 56°45'53" East, a distance of 542.73 feet; thence South 0°30'54" East, a distance of 673.42 feet to a point on the South line of said Southeast Quarter of the Southeast Quarter; thence North 90°00'00" West, on said South line, a distance of 456.63 feet to the **POINT OF BEGINNING**. Said tract contains 5.5 acres, more or less.

TERRA TECH LAND SURVEYING, INC.
Arthur G. Griffiths
Arthur G. Griffiths, LS #244
Date Oct. 20, 1995

