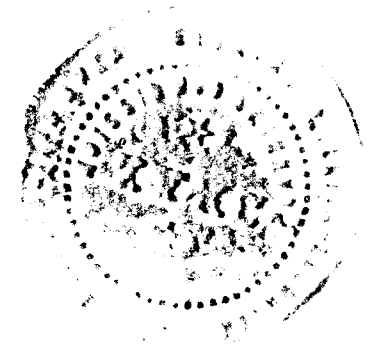


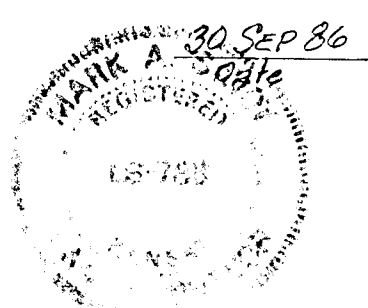
Ayesh Addition

AYESH ADDITION

WICHITA, KANSAS.

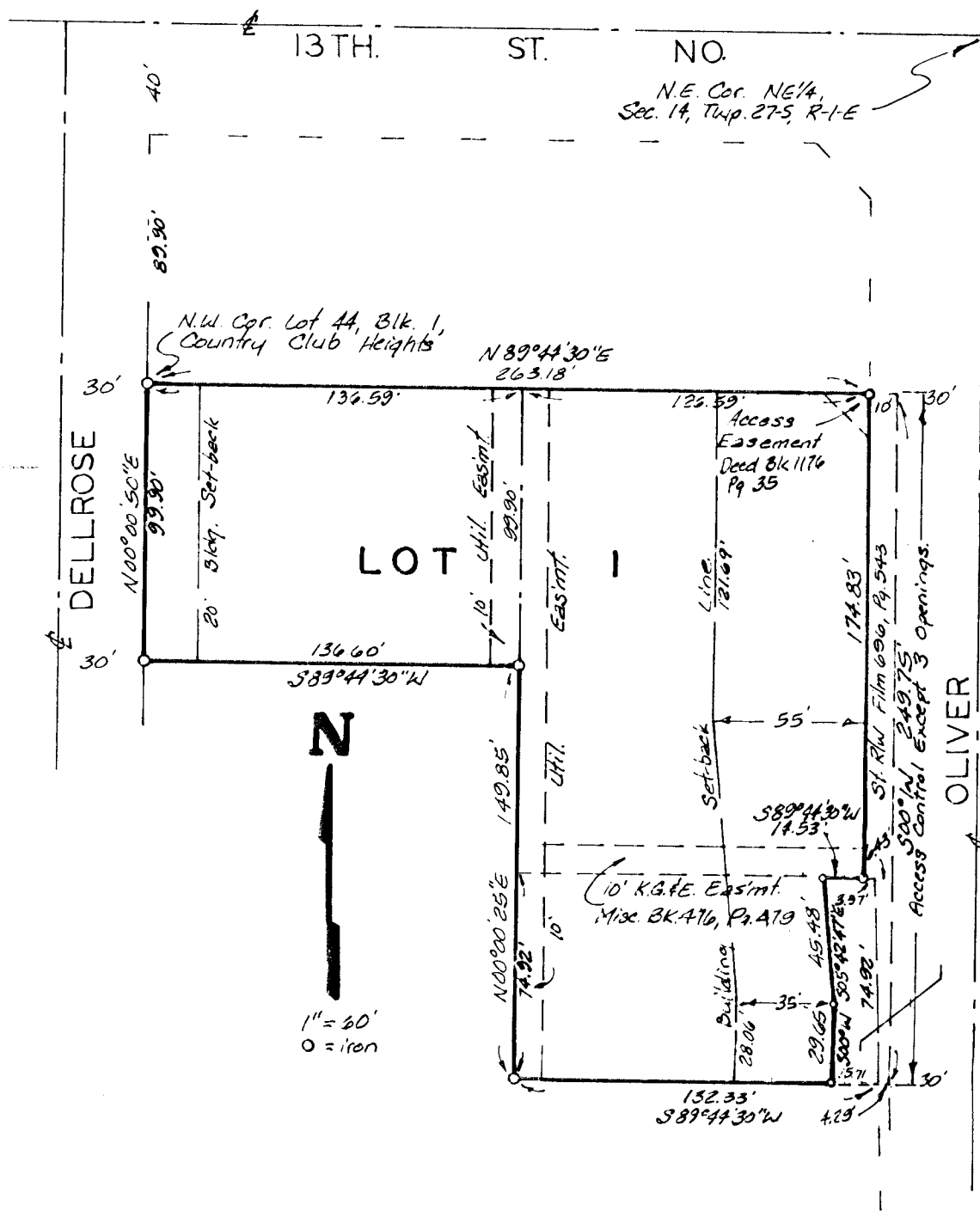


State of Kansas 733. We, Baughman Company, P.A., Surveyors in and for said county and state do hereby certify that we have surveyed and platted "AYESH ADDITION" Wichita, Kansas, and that the accompanying plat is a true and correct exhibit of the property surveyed, described as and being a replat of lots 5, 6, 7, 8, 9, 10, 11, 12, 13 and 14 except that part taken for street right-of-way as recorded on Film 926, at page 543 and all of Lots 11, 12, 13, and 14, Block 1, Country Club Heights, Sedgwick County, Kansas, being situated in the NE 1/4 Sec. 14, Twp. 27-S, R-1-E of the 6th PM, Sedgwick County, Kansas.



Baughman Company, P.A.
Mark A. Baughman Surveyor

Know all men by these presents that we, the undersigned, have caused the land described in the surveyors certificate to be platted into a lot to be known as "AYESH ADDITION" Wichita, Kansas. The utility easements are hereby granted as indicated for the construction and maintenance of all public utilities. The street is hereby dedicated to and for the use of the public. All abutters rights of access to or from Oliver Street, over and across the east line of Lot 1, are hereby granted to the City of Wichita, provided however that Lot 1 shall have access to Oliver Street at 3 points as shall be determined by the City Engineer of Wichita, Kansas.



Richard R. Ayesh
Mildred M. Ayesh

State of Kansas 733. The foregoing instrument acknowledged before me this 11 day of November 1984 by Richard R. Ayesh and Mildred M. Ayesh his wife.

Tina L. Lenz Notary Public
My Appt Exp 11-25-87

We, the undersigned, holders of a mortgage on the above described property do hereby consent to this plat of "AYESH ADDITION" Wichita, Kansas.

Kansas State Bank and Trust Company
Wm. Randall Summers

State of Kansas 733. The foregoing instrument acknowledged before me this 11 day of November 1984 by Wm. Randall Summers, Vice President of the Kansas State Bank and Trust Company on behalf of the corporation.

Susan J. Houlik Notary Public
My Appt Exp 11-25-87

This plat of "AYESH ADDITION" Wichita, Kansas, has been submitted to and approved by the Wichita-Sedgwick County Metropolitan Area Planning Commission, Wichita, Kansas.

Dated this 16th day of October 1984
Wichita-Sedgwick County Metropolitan Area Planning Commission

John Terry Moore Chairman
Michael E. Lindquist Secretary

This plat approved and all dedications shown hereon accepted by the Board of Commissioners of the City of Wichita, Kansas, this 1st day of Dec 1984.

Tom Casado Mayor
Lea City Clerk

Entered on transfer record this 1st day of 1984

Don Wright County Clerk

State of Kansas 733. This is to certify that this plat has been filed for record in the office of the Register of Deeds this 11 day of November 1984, at 11 o'clock A.M., and is duly recorded.

Pat Kattler Register of Deeds
Ed Raza Deputy