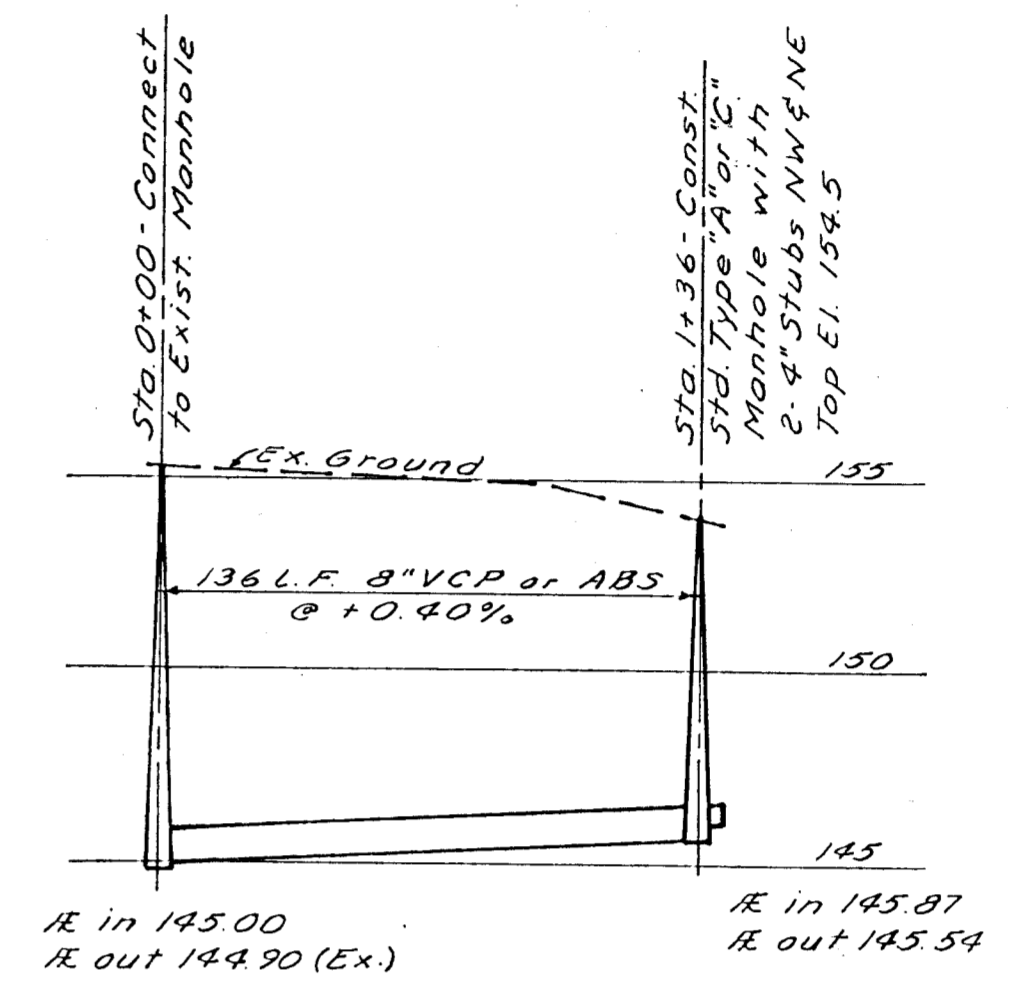
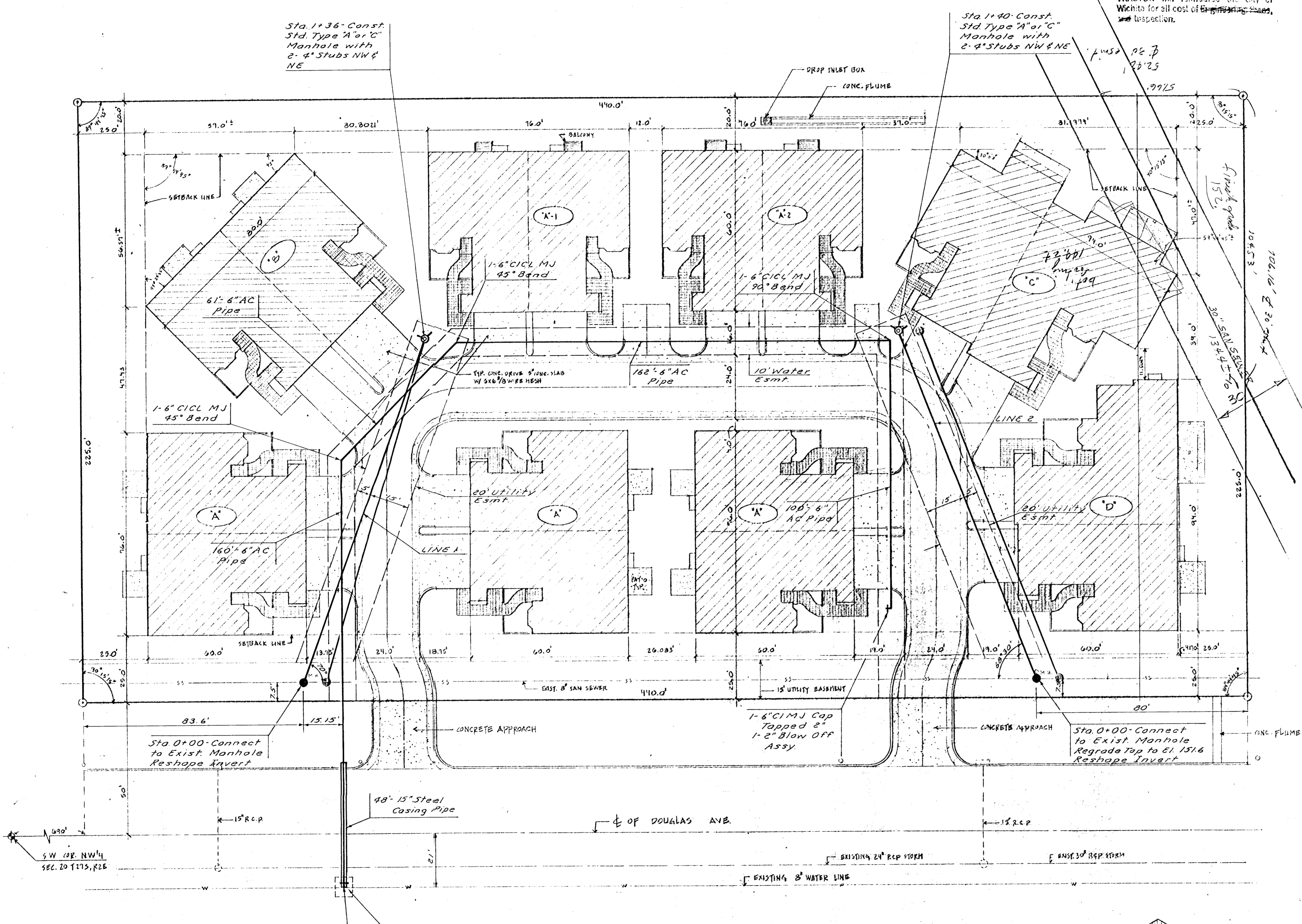


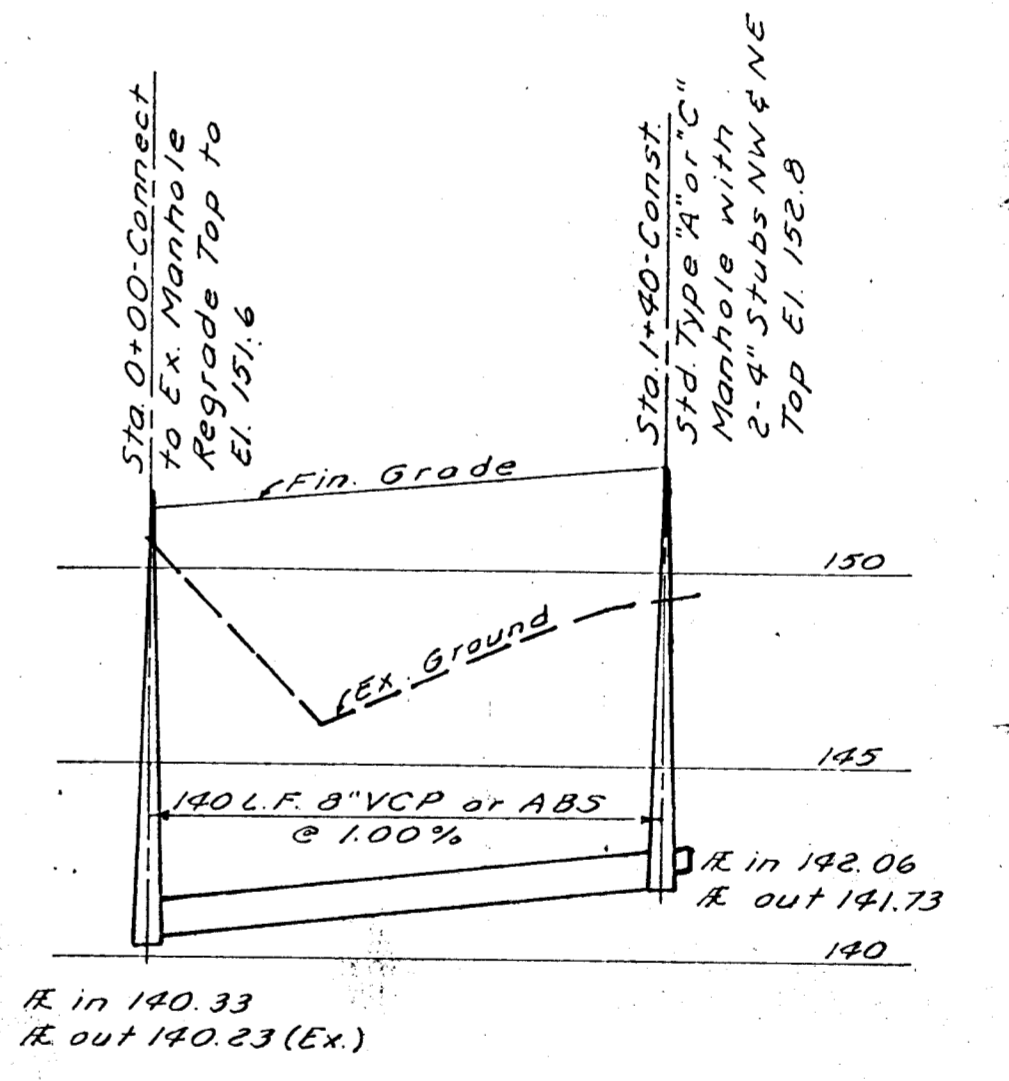
10-11-78

APPROVED AS NOTED  
By CITY ENGINEER OF WICHITA  
Sanitary Sewers  
Storm Sewers  
Driveway Approaches

**NOTE TO CONTRACTOR**  
This project will be constructed under the supervision of the CITY ENGINEER and conforming to the SPECIFICATIONS of the CITY OF WICHITA. The CONTRACTOR will reimburse the City of Wichita for all cost of engineering, and inspection.



LINE 1  
Scale: Hor. 1"=50'  
Ver. 1"=5'



LINE 2

**UTILITIES PLAN 1"=20'**

LOT 2 OF B & H ADDITION #40 EAST PART OF THE NW 1/4 SECTION 20, T21S, R2E

APPROVED  
WICHITA WATER DEPARTMENT  
CITY OF WICHITA  
Date 10-10-78

**LOT 2 - B & H. ADDITION  
SITE DEVELOPMENT-UTILITIES**  
CITY SAN SEWER PROJ. 468-76-245-80629-000-000-008  
CITY WATER PROJ. 587-80-925-80463-000-000-001  
ADDRESS - 8202 E. DOUGLAS

B.M. Brass Cap NE Hub Guard on Bridge E. of Property El. 153.71