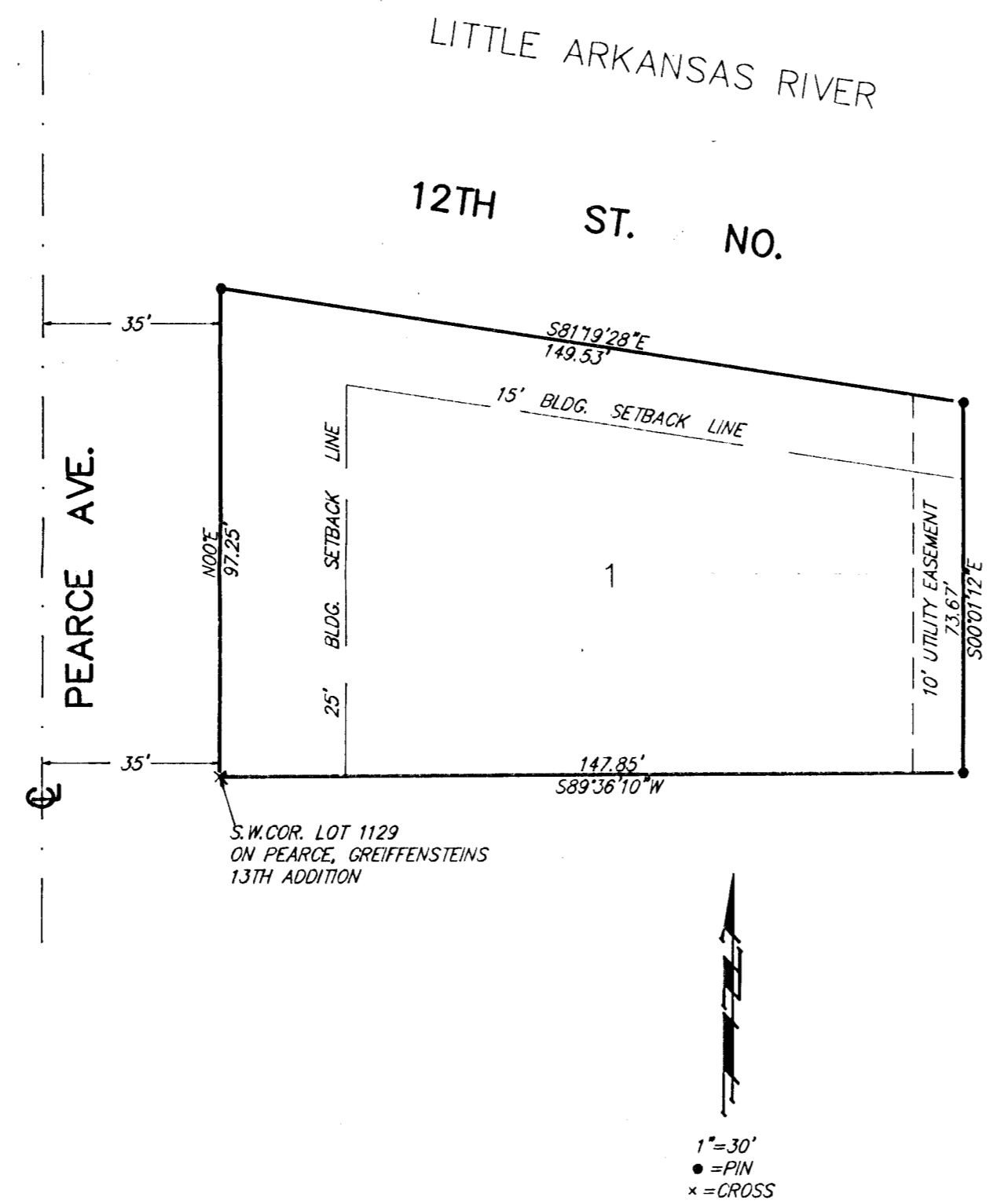


# BLT ADDITION

## WICHITA, SEDGWICK COUNTY, KANSAS



State of Kansas) SS We, Baughman Company, P.A., Surveyors in Sedgwick County) do hereby certify that we have surveyed and platted "BLT ADDITION", Wichita, Sedgwick County, Kansas, and that the accompanying plat is a true and correct exhibit of the property surveyed, described as all of Lots 1129, 1131, 1133, and Lot 1135 except that part taken for 12th St. by City Ordinance, all on Pearce Ave., together with the W. 1/2 of vacated Alley adjacent on the east, all in Greiffenstein's Thirteenth Addition to the City of Wichita, Sedgwick County, Kansas, and together with a portion of 12th St. as previously taken by City Ordinance, being originally a portion of said Lot 1135, all being more particularly described as beginning at the S.W. Cor. of said Lot 1129; thence N00E, along the east line of Pearce Ave., 97.25 feet; thence S81°19'28"E, 149.53 feet; thence S00°01'12"E 73.67 feet; thence S89°36'10"W, 147.85 feet to the place of beginning

The above described portion of street and alley are hereby vacated by virtue of K.S.A 12-512 (b).

All being situated in the N.W. 1/4 of Sec. 17, Twp. 27-S, R-1-E of the 6th P.M., Sedgwick County, Kansas.

Baughman Company, P.A.

7-26-91  
Date



*Gregory F. Severns*  
Surveyor  
Gregory F. Severns

Know all men by these presents that we the undersigned, have caused the land described in the surveyors certificate to be platted into a lot to be known as "BLT ADDITION", Wichita, Sedgwick County, Kansas. The utility easement is hereby granted as indicated for the construction and maintenance of all public utilities.

*Edward J. Roberts*  
BLT Partners  
Partner  
Edward J. Roberts

This plat of "BLT ADDITION", Wichita, Sedgwick County, Kansas, has been submitted to and approved by the Wichita-Sedgwick County Metropolitan Area Planning Commission, Wichita, Kansas.

Dated this \_\_\_\_\_ day of \_\_\_\_\_, 1991.  
Wichita-Sedgwick County Metropolitan Area Planning Commission.

\_\_\_\_\_  
George D. Sherman  
Chairman

\_\_\_\_\_  
Marvin S. Krout  
Secretary

State of Kansas) SS The foregoing instrument acknowledged before me, this 20<sup>th</sup> day of July, 1991, by Edward J. Roberts, Partner of BLT Partners.

*Arland E. Lang*  
Notary Public  
My App't Exp. 2-3-95

This plat approved and all dedications shown hereon accepted by the City Council of the City of Wichita, Kansas, this \_\_\_\_\_ day of \_\_\_\_\_, 1991.

\_\_\_\_\_  
Bob Knight  
Mayor

\_\_\_\_\_  
Pat Burnett  
City Clerk

Entered on transfer record this \_\_\_\_\_ day of \_\_\_\_\_, 1991.

\_\_\_\_\_  
Don Wright  
County Clerk

State of Kansas) SS This is to certify that this plat has been filed for record in the office of the Register of Deeds, this \_\_\_\_\_ day of \_\_\_\_\_, 1991, at \_\_\_\_\_ o'clock \_\_\_\_\_ M., and is duly recorded.

\_\_\_\_\_  
Pat Kettler  
Register of Deeds

\_\_\_\_\_  
Ed Resa  
Deputy