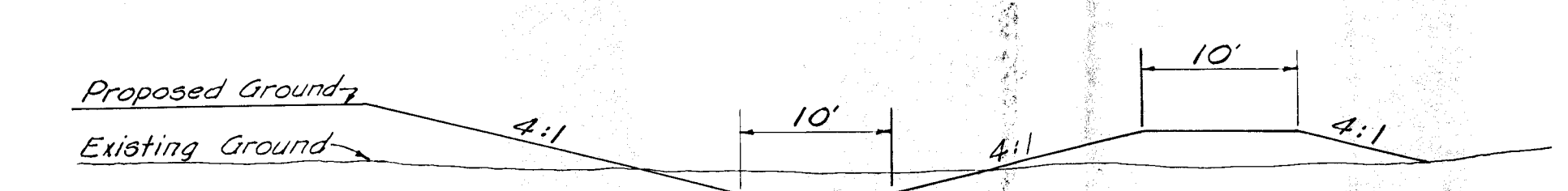


SCALE: 1" = 50'

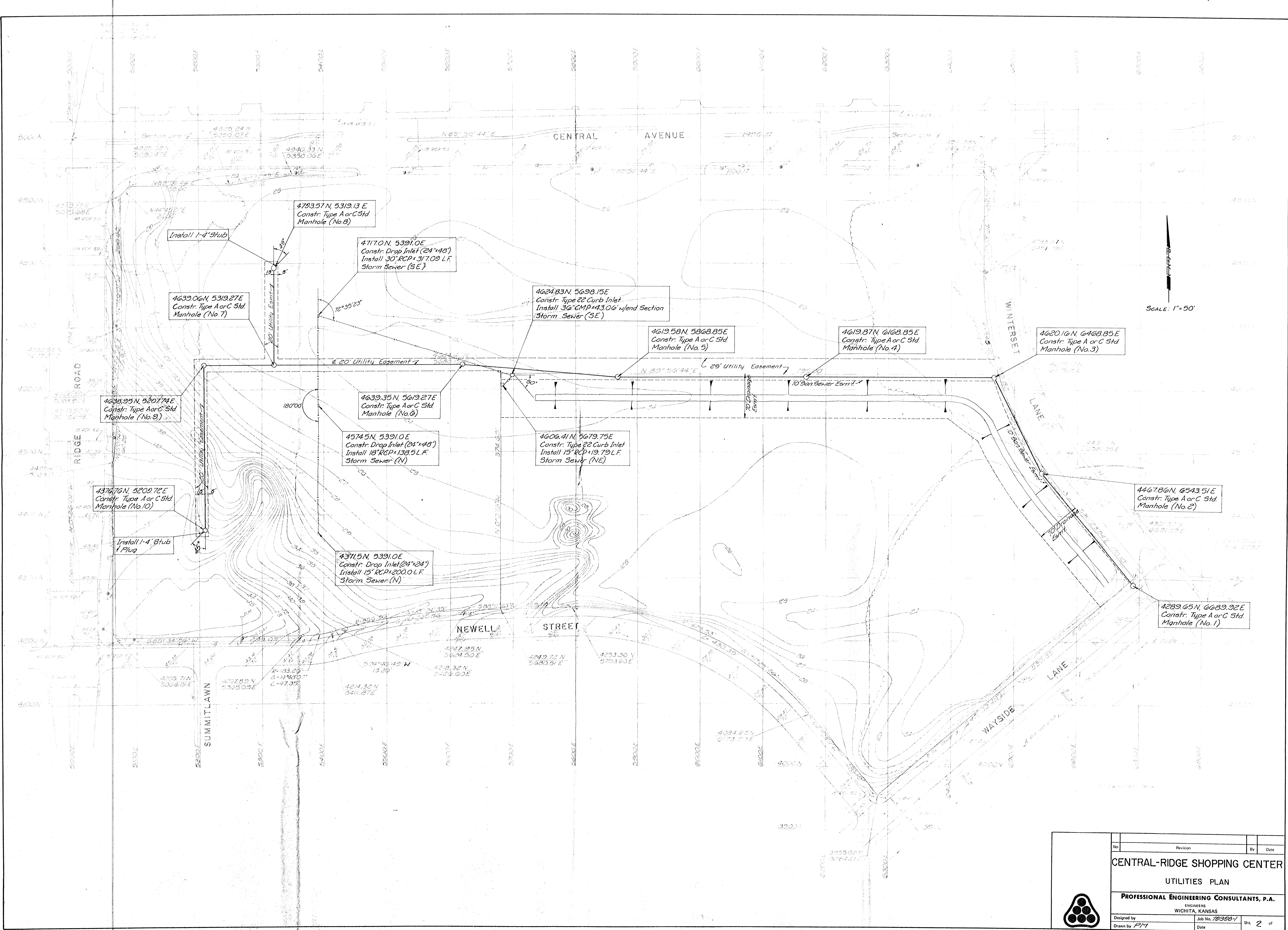


SECTION C DRAINAGE CHANNEL

See Detail Sheet 5 for Installation of 48"x33" CMMAC

March 1980

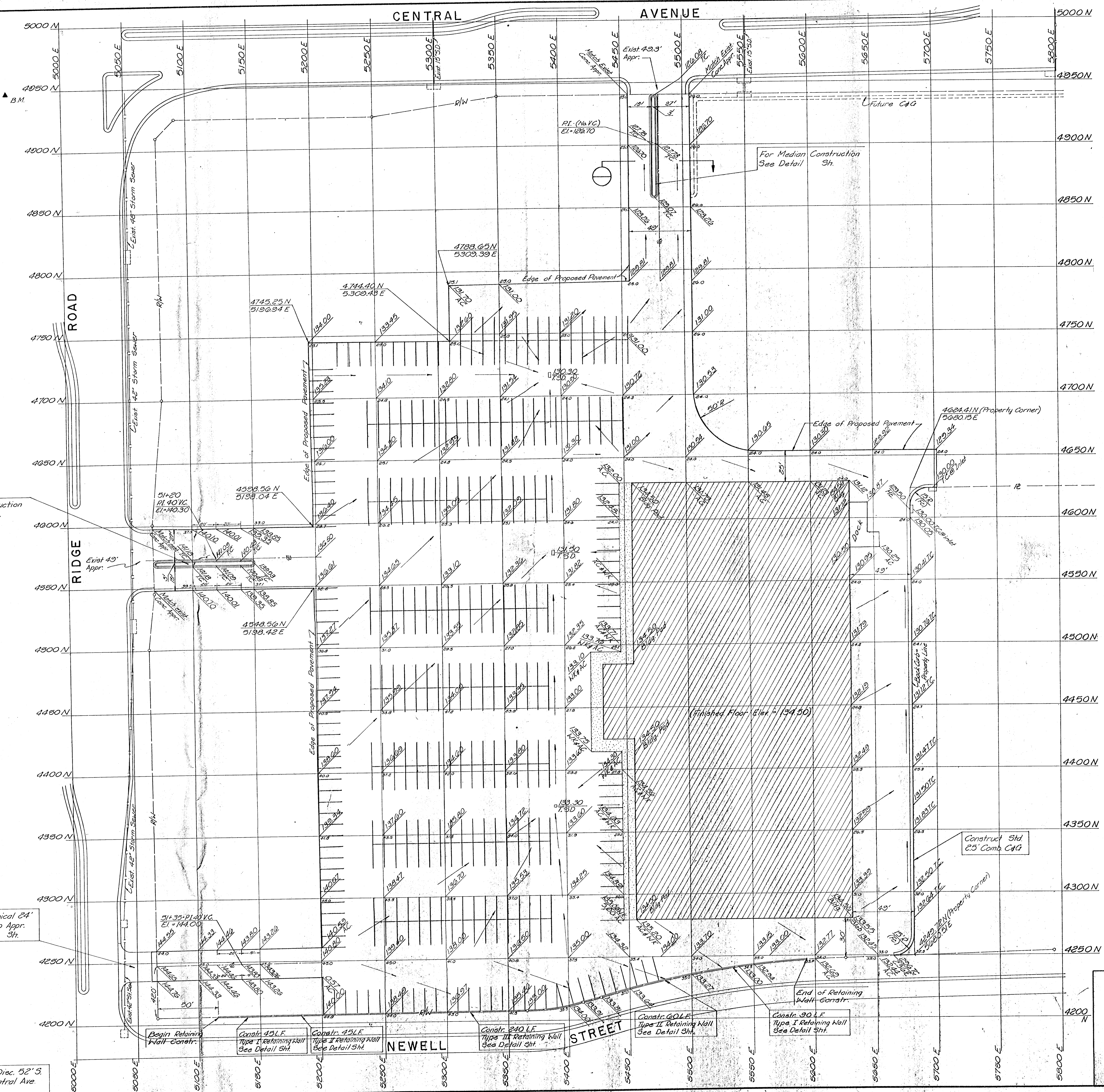
No.	Revision	By	Date
<b>CENTRAL-RIDGE SHOPPING CENTER</b>			
SITE GRADING AND AREA DRAINAGE			
<b>PROFESSIONAL ENGINEERING CONSULTANTS, P.A.</b>			
ENGINEERS WICHITA, KANSAS			
Designed by	Job No. 79338-1	Sht. 1 of 1	
Drawn by	Date 01/30/80		



SCALE: 1"=50'

- 4793.57 N, 5319.13 E  
Constr. Type A or C Std  
Manhole (No. 8)
- 4717.0 N, 5391.0 E  
Constr. Drop Inlet (24"x48")  
Install 30" RCP x 317.09 L.F.  
Storm Sewer (SE)
- 4639.06 N, 5319.27 E  
Constr. Type A or C Std  
Manhole (No. 7)
- 4624.83 N, 5698.15 E  
Constr. Type 22 Curb Inlet  
Install 36" CMP x 43.06' w/ end Section  
Storm Sewer (SE)
- 4619.58 N, 5868.85 E  
Constr. Type A or C Std  
Manhole (No. 5)
- 4619.87 N, 6168.85 E  
Constr. Type A or C Std  
Manhole (No. 4)
- 4620.16 N, 6468.85 E  
Constr. Type A or C Std  
Manhole (No. 3)
- 4639.35 N, 5619.27 E  
Constr. Type A or C Std  
Manhole (No. 6)
- 4574.5 N, 5391.0 E  
Constr. Drop Inlet (24"x48")  
Install 18" RCP x 138.5 L.F.  
Storm Sewer (N)
- 4606.41 N, 5679.75 E  
Constr. Type 22 Curb Inlet  
Install 15" RCP x 19.79 L.F.  
Storm Sewer (NE)
- 4467.86 N, 6543.51 E  
Constr. Type A or C Std  
Manhole (No. 2)
- 4371.5 N, 5391.0 E  
Constr. Drop Inlet (24"x24")  
Install 15" RCP x 200.0 L.F.  
Storm Sewer (N)
- 4376.76 N, 5209.72 E  
Constr. Type A or C Std  
Manhole (No. 10)
- 4289.65 N, 6689.92 E  
Constr. Type A or C Std  
Manhole (No. 1)

No.	Revision	By	Date
<b>CENTRAL-RIDGE SHOPPING CENTER</b>			
<b>UTILITIES PLAN</b>			
<b>PROFESSIONAL ENGINEERING CONSULTANTS, P.A.</b>			
ENGINEERS WICHITA, KANSAS			
Designed by	Job No. 20308-7	Sht. 2 of	
Drawn by P.M.	Date		

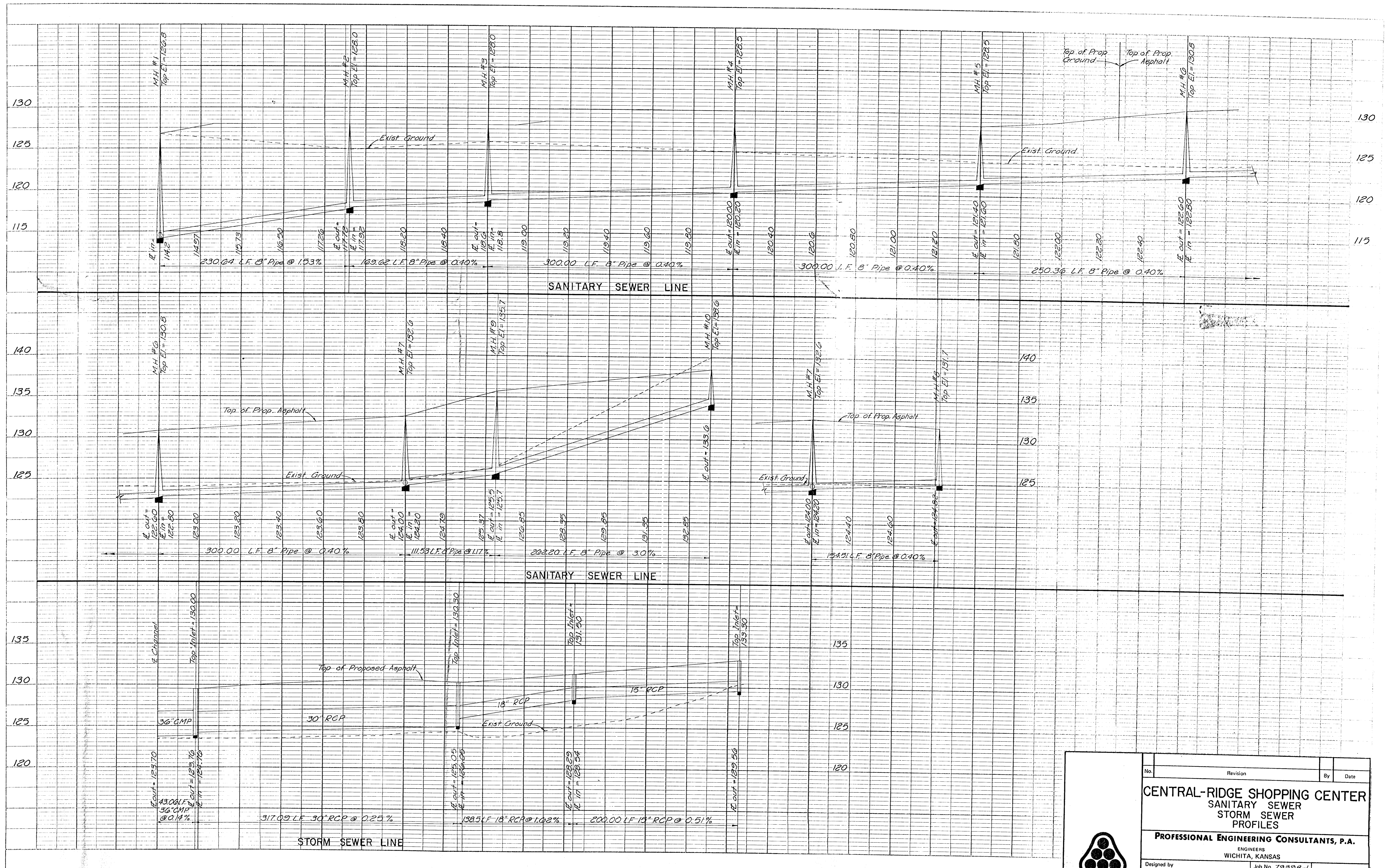


Scale: 1" = 30'

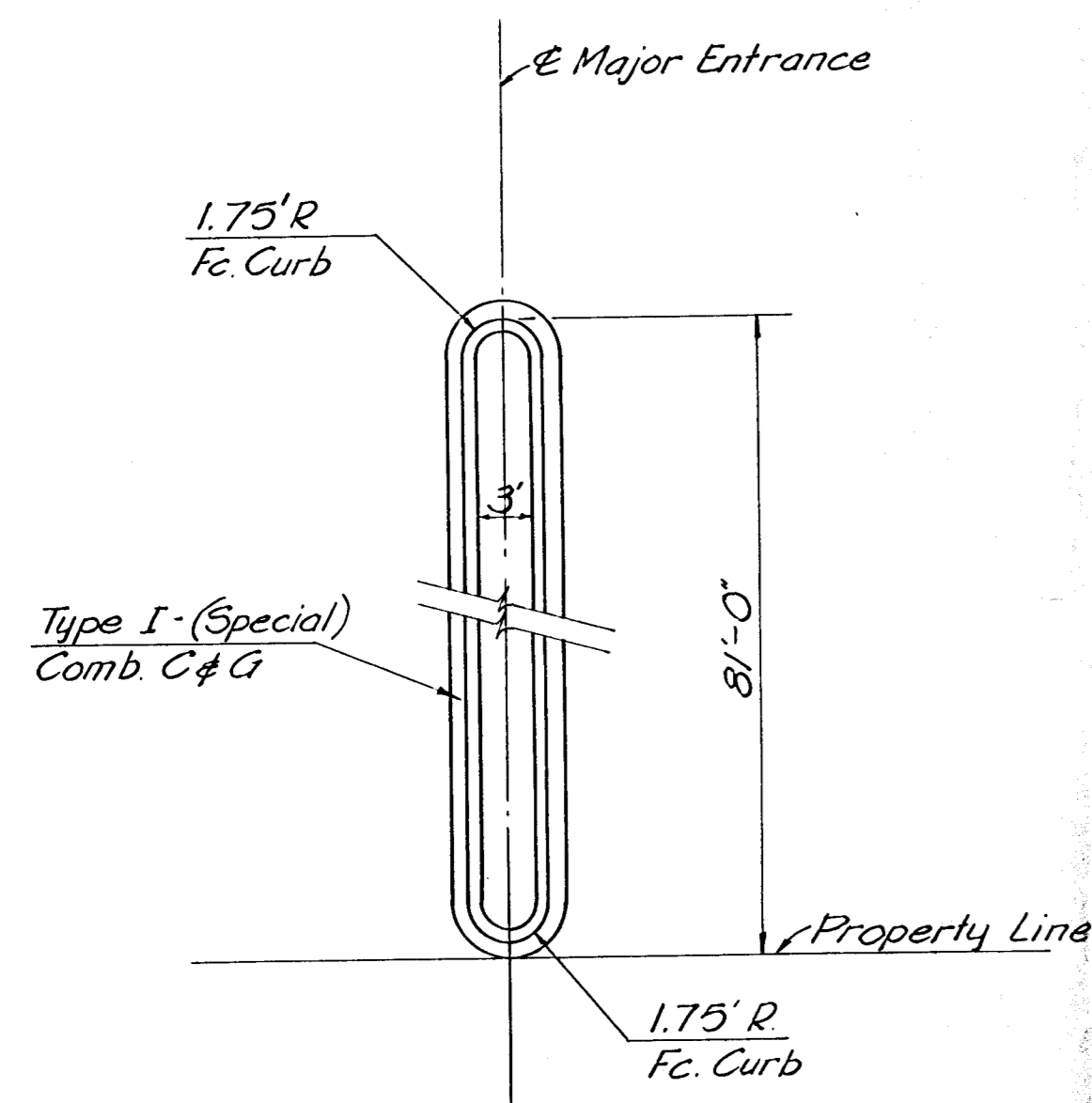
- LEGEND**
- Grid Lines
  - Fin Grade (Top of Bit Surf. in Pkg Area)
  - Exist. Ground Elev.
  - AC = Top of Asphalt
  - TC = Top of Curb
  - WK = Top of Sidewalk
  - HE = High Edge

B.M. - City of Wichita Bench Mark Disc. 52' S. # 44' N. & Ridge Rd. # Central Ave. Elev. = 131.539

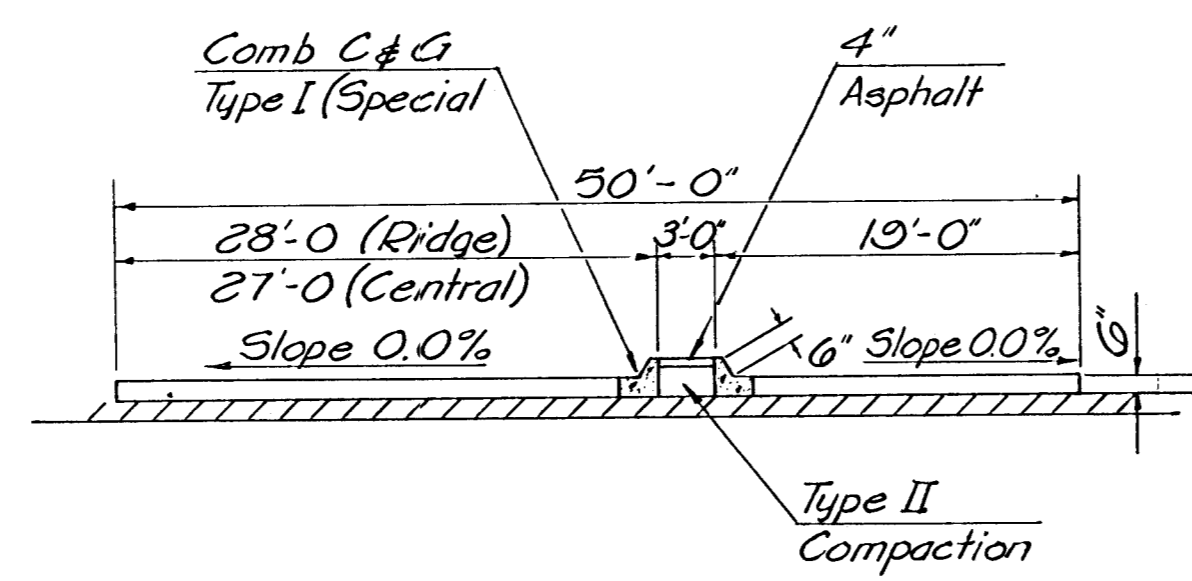
No.	Revision	By	Date
<b>CENTRAL-RIDGE SHOPPING CENTER</b>			
<b>PAVING PLAN</b>			
<b>PROFESSIONAL ENGINEERING CONSULTANTS, P.A.</b>			
<small>ENGINEERS WICHITA, KANSAS</small>			
Designed by	SS	Job No.	73398-1
Drawn by	DM	Date	
			Sht. 3 of 3



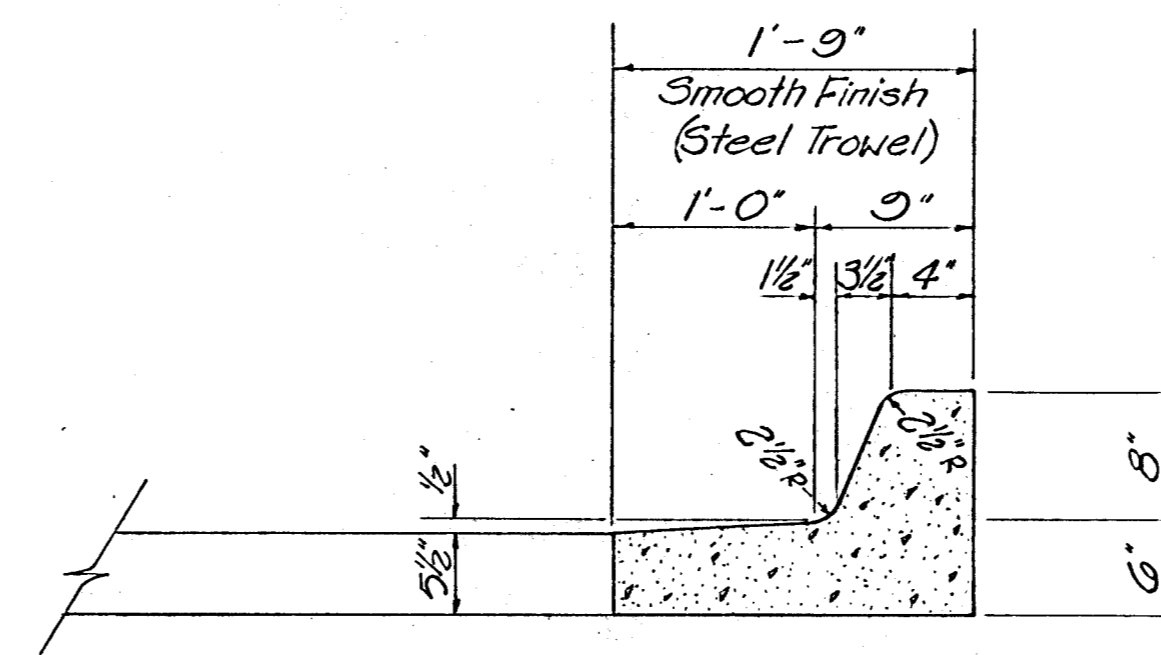
No.	Revision	By	Date
<b>CENTRAL-RIDGE SHOPPING CENTER</b> SANITARY SEWER STORM SEWER PROFILES <b>PROFESSIONAL ENGINEERING CONSULTANTS, P.A.</b> ENGINEERS WICHITA, KANSAS			
Designed by	Job No. 79398-1	Sht. 4 of	
Drawn by PM	Date		



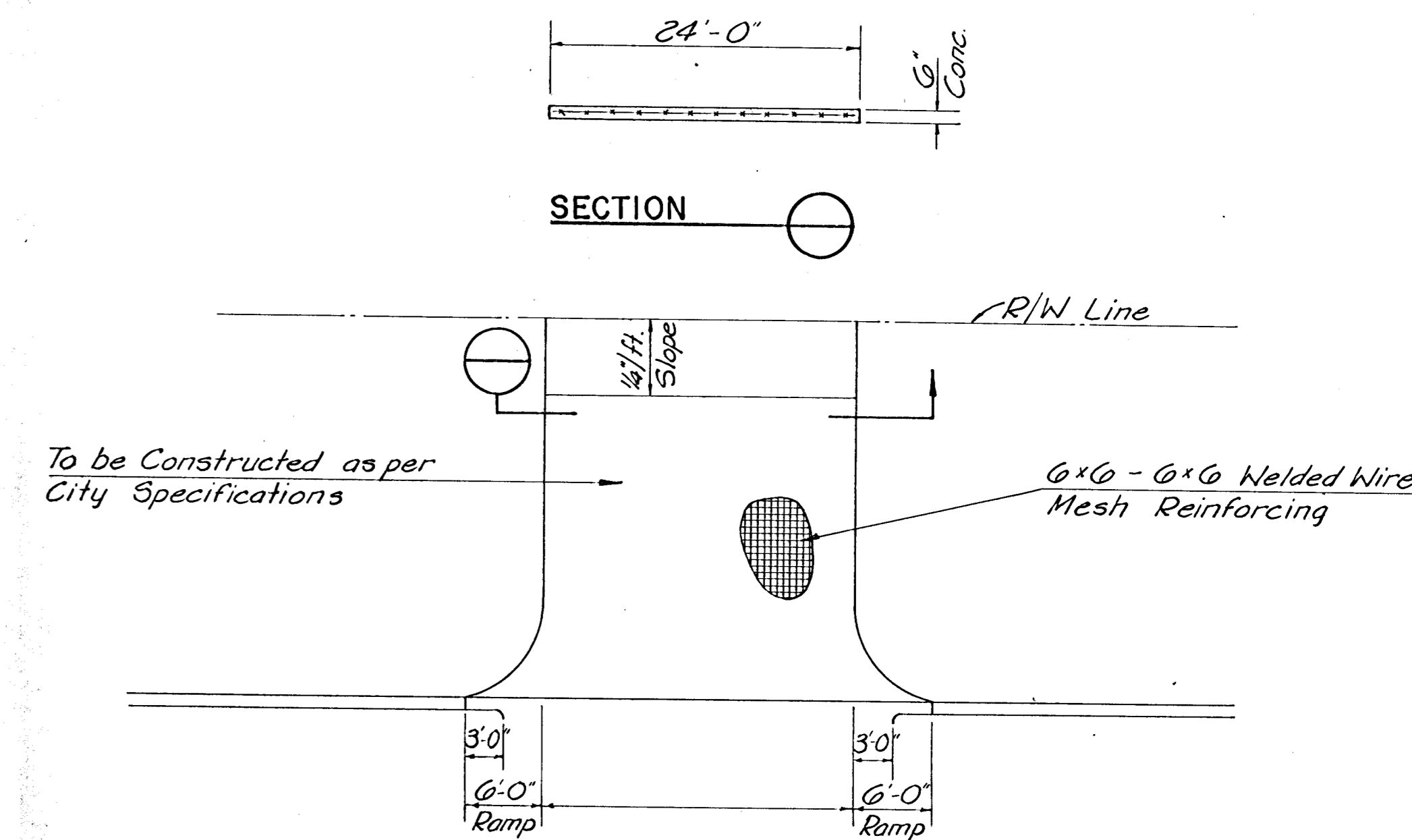
DETAIL FOR RAISED MEDIAN IN MAJOR ENTRANCE



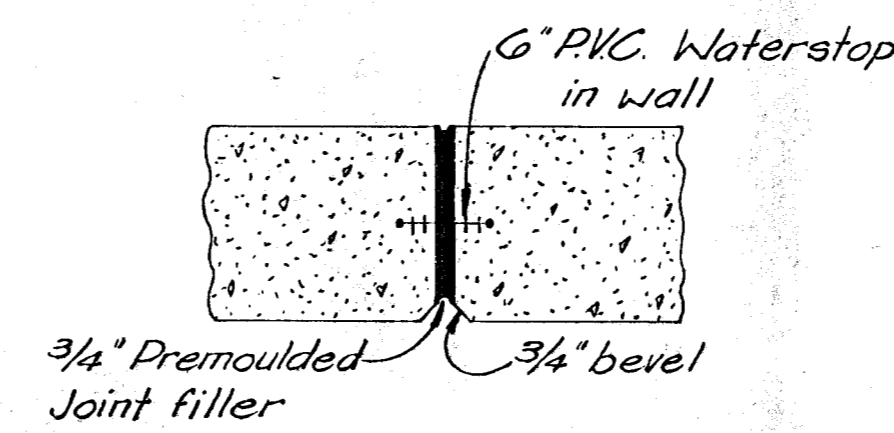
TYPICAL SECTION THRU MAJOR ENTRANCE



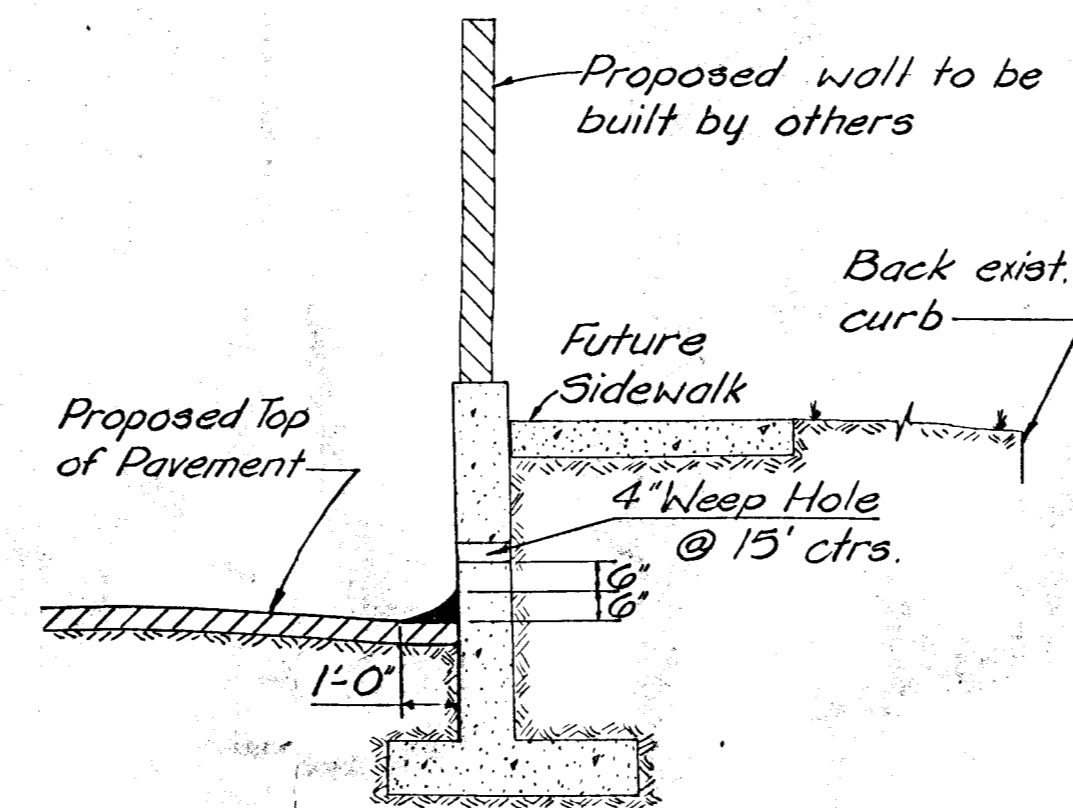
COMBINED CURB & GUTTER - TYPE I SPECIAL (1'-9" WIDTH)



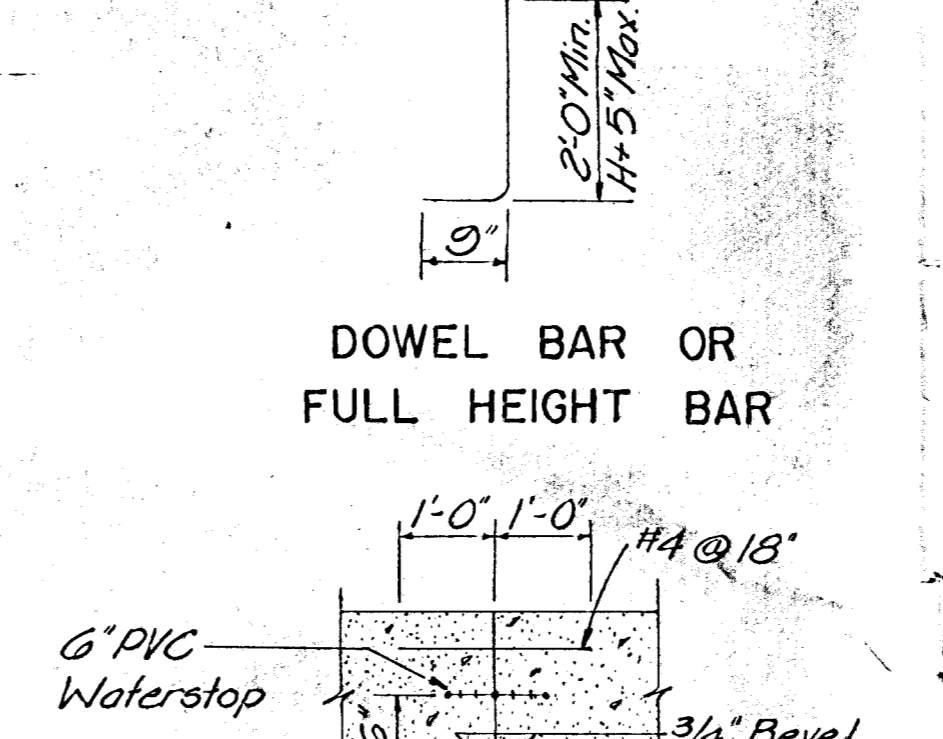
ENTRANCE DETAIL



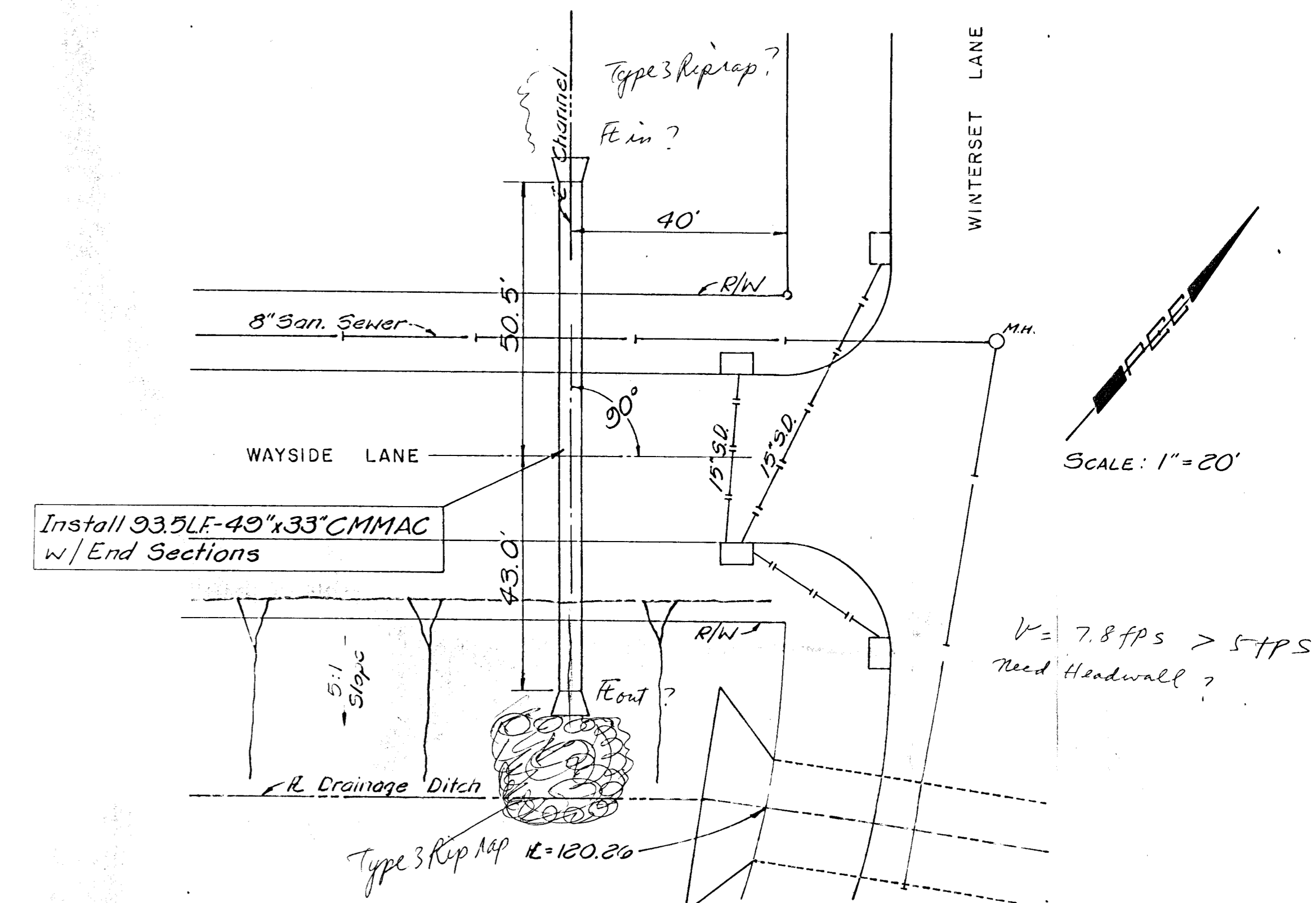
EXPANSION JOINT DETAIL



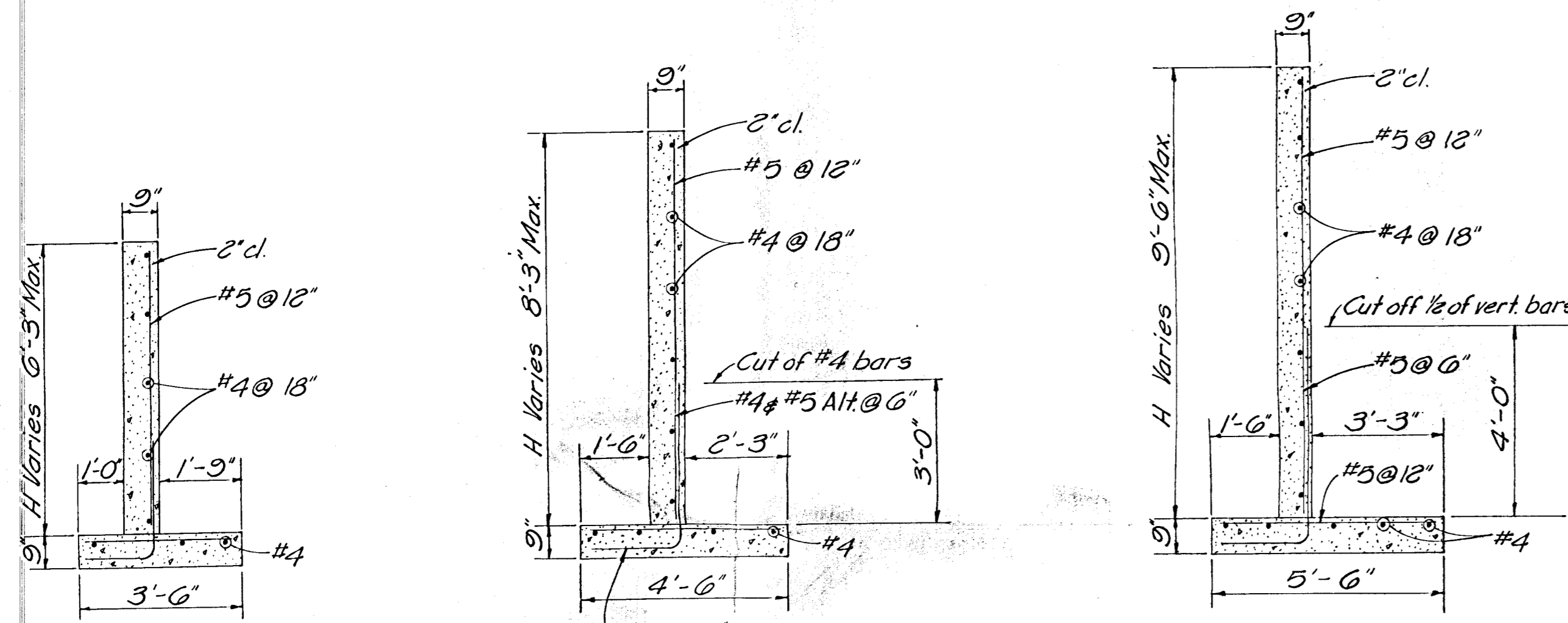
TYPICAL SECTION THRU RETAINING WALL



WALL CONSTRUCTION JOINT DETAIL



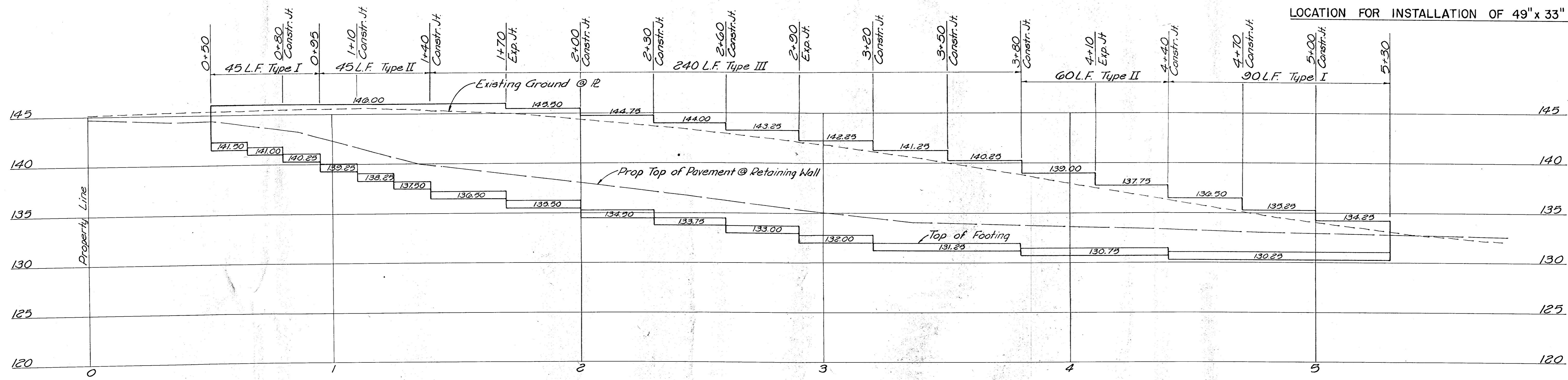
LOCATION FOR INSTALLATION OF 49" x 33" CMMAC



SECTION TYPE I RETAINING WALL

SECTION TYPE II RETAINING WALL

SECTION TYPE III RETAINING WALL



RETAINING WALL PROFILE

Drainage Plan  
2/27/80

No.	Revision	By	Date
<b>CENTRAL-RIDGE SHOPPING CENTER</b> <b>RETAINING WALL</b> <b>&amp;</b> <b>MISCELLANEOUS DETAILS</b> <b>PROFESSIONAL ENGINEERING CONSULTANTS, P.A.</b> ENGINEERS WICHITA, KANSAS			
Designed by	Job No. 79398-1	Sht. 5 of	
Drawn by PM	Date		

