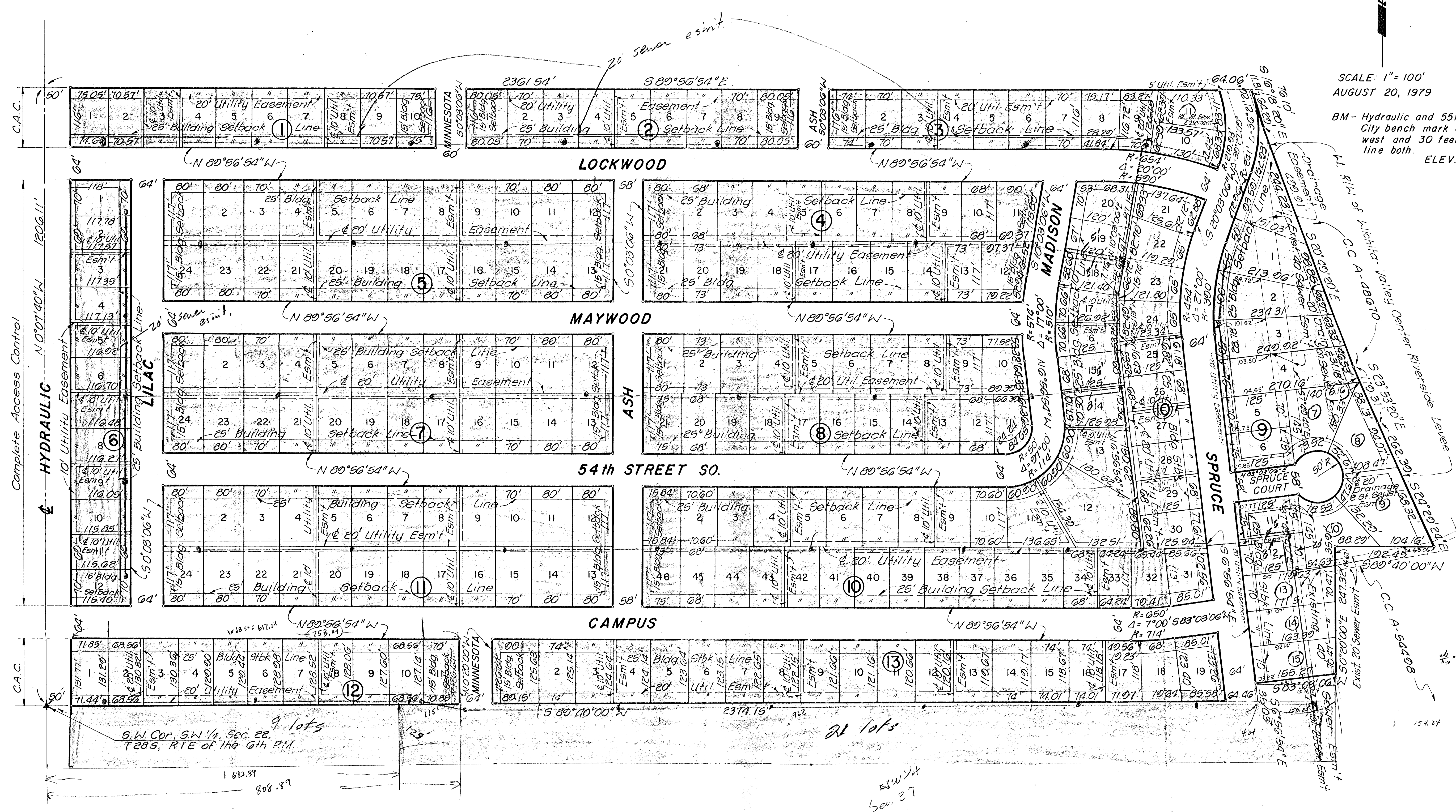


BO-MAR FIRST ADDITION

TO WICHITA, SEDGWICK COUNTY, KANSAS



SCALE: 1" = 100'
AUGUST 20, 1979

BM - Hydraulic and 55th Street South;
City bench mark disc, 44 feet
west and 30 feet south center
line both. ELEV. 76.574

S.W. Cor. SW 1/4, Sec. 22,
T28S, R1E of the 6th PM.

SW 1/4
Sec. 27

2523.91