

BO-MAR FIRST ADDITION

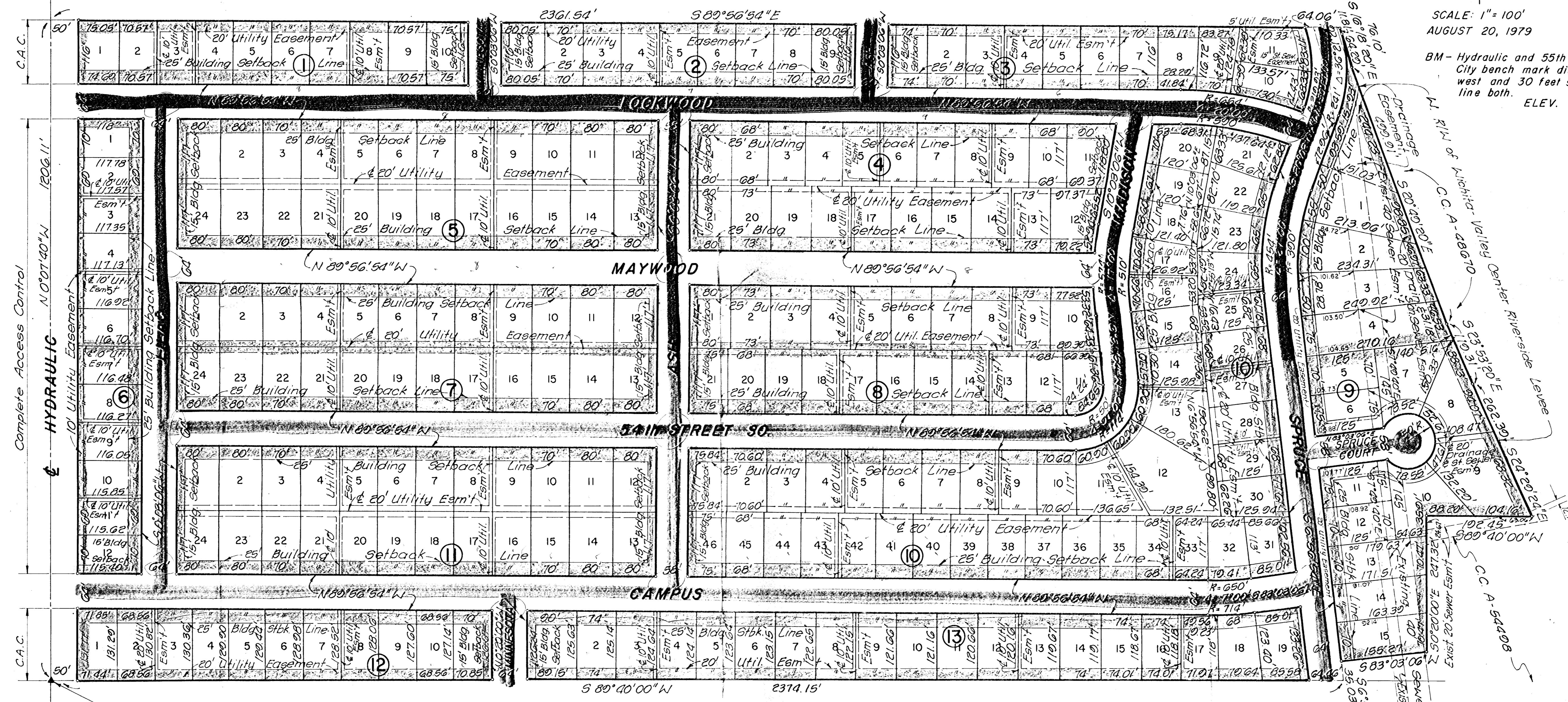
TO WICHITA, SEDGWICK COUNTY, KANSAS

*Sidewalk
1 side
of Lockwood
North side*

*add 59.0 extra
in size*

SCALE: 1" = 100'
AUGUST 20, 1979

BM - Hydraulic and 55th Street South;
City bench mark disc, 44 feet
west and 30 feet south center
line both. ELEV. 76.574



Complete Access Control
HYDRAULIC
10' Utility Easement
25' Building Setback Line

S.W. Cor. S.W. 1/4, Sec. 22,
T28S, R1E of the 6th P.M.

*Sidewalk
1-side complete*