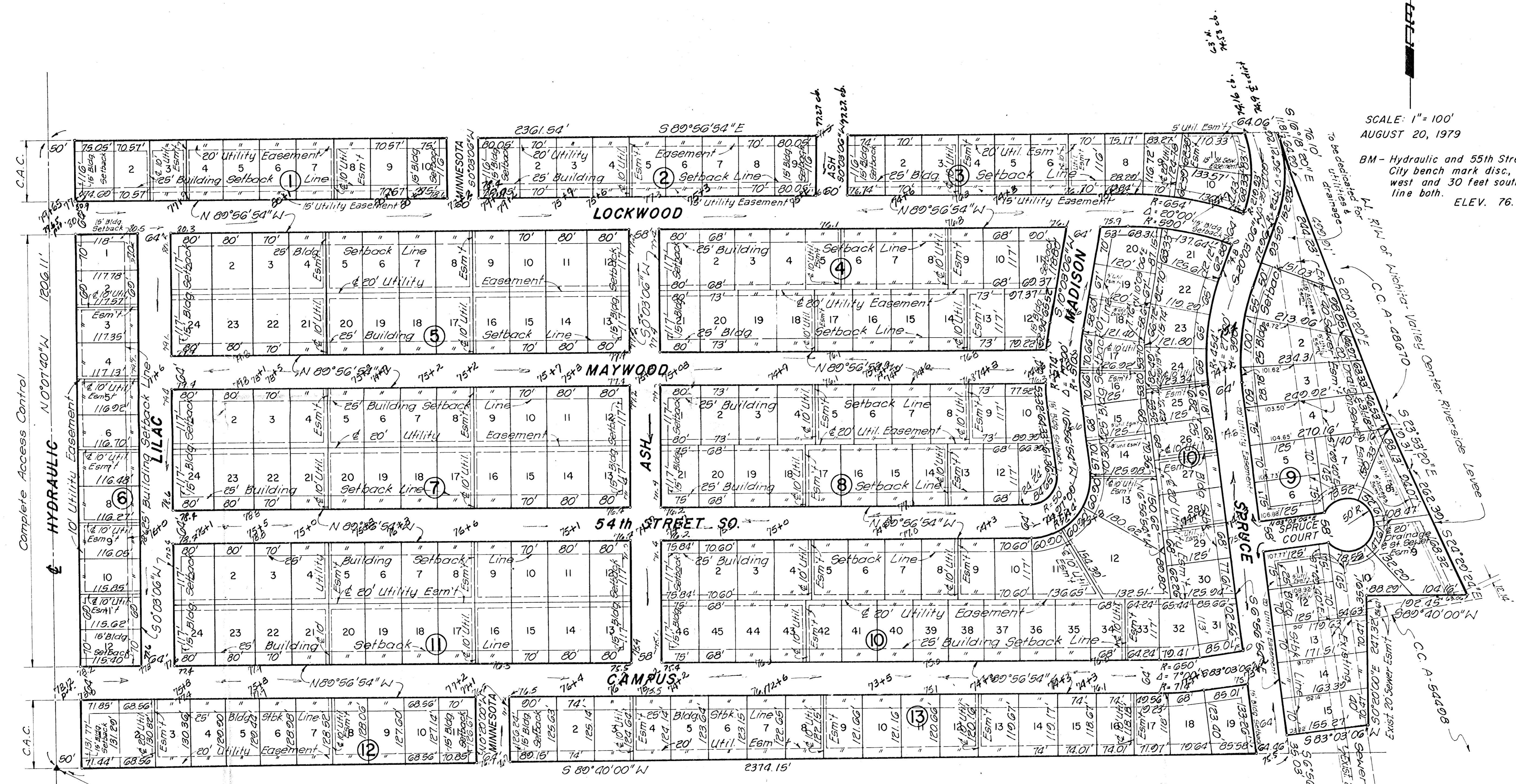


BO-MAR FIRST ADDITION

TO WICHITA, SEDGWICK COUNTY, KANSAS

SCALE: 1" = 100'
AUGUST 20, 1979

BM - Hydraulic and 55th Street South;
City bench mark disc, 44 feet
west and 30 feet south center
line both. ELEV. 76.574



S.W. Cor. S4 1/4 Sec. 22,
T28S, R1E of the 6th P.M.

75.0 Top of Curb Elev.
75.0 Street Profile (existing elev.)

Bo-Mar Add
Revised Street Grades
4/1/80

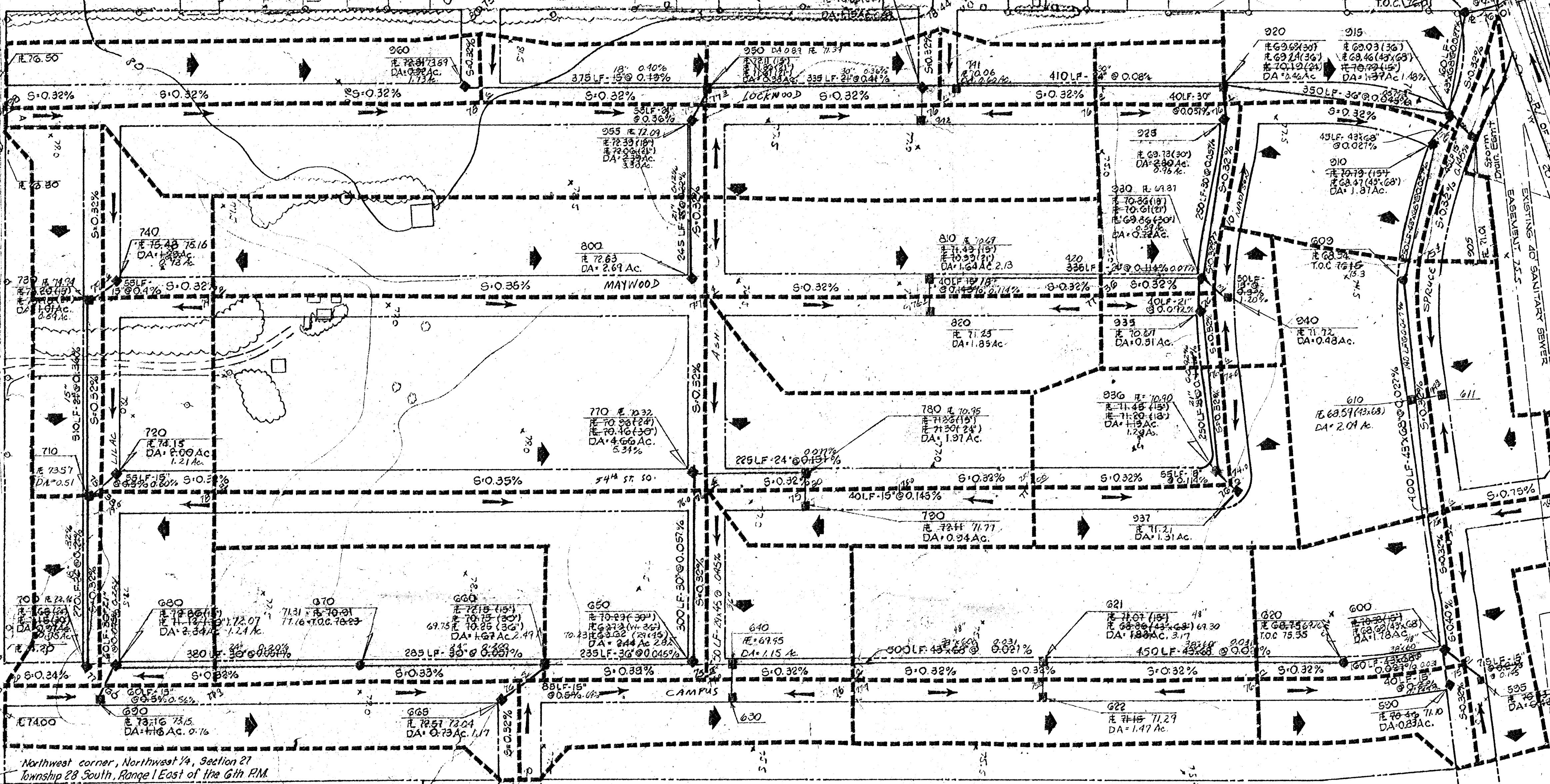
River High Water Elev. 76.00

SCALE: 1"=100'

NOTE: SEE SHEET 2 FOR DETAILS ON SIMON CROSSING AND PROPOSED STRUCTURES

EXISTING 40" SANITARY SEWER

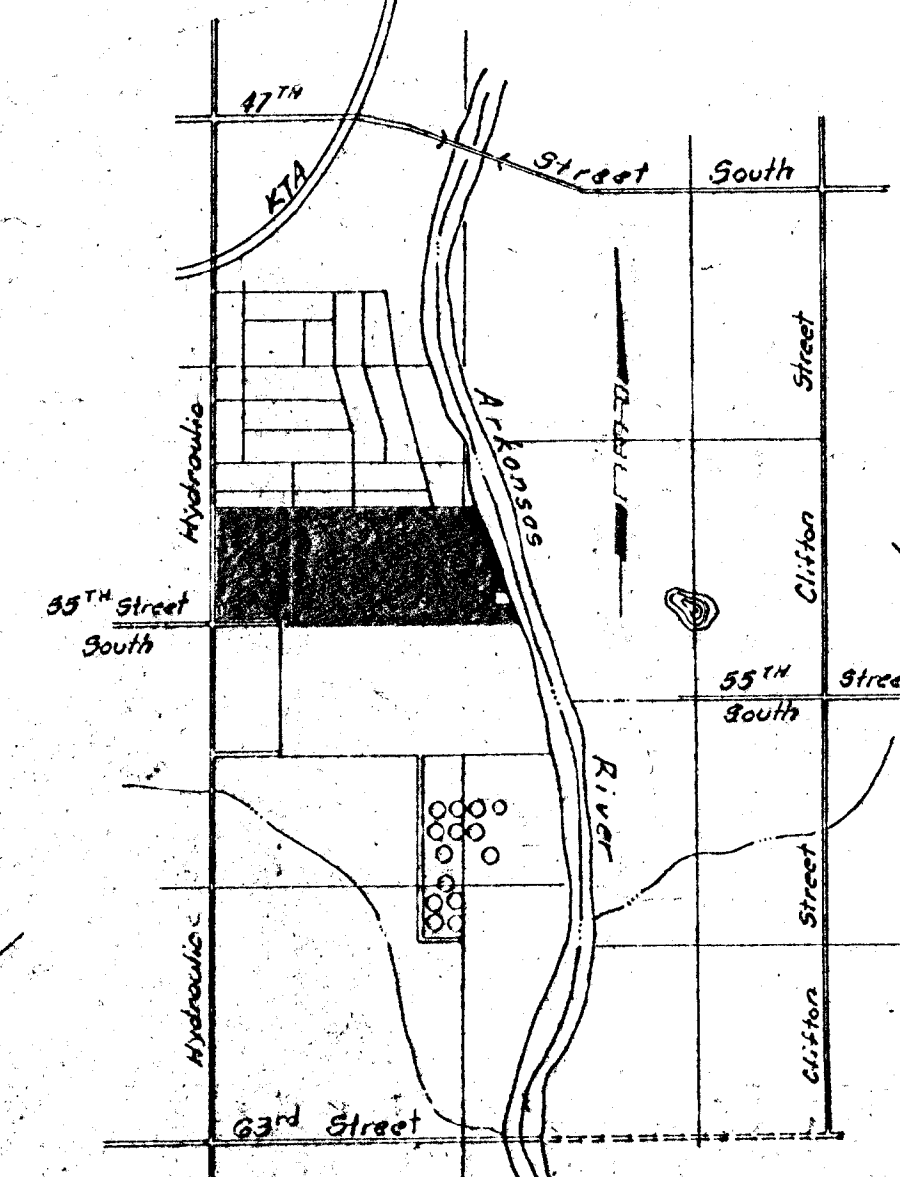
EXIST. 20" San Sewer Eamt



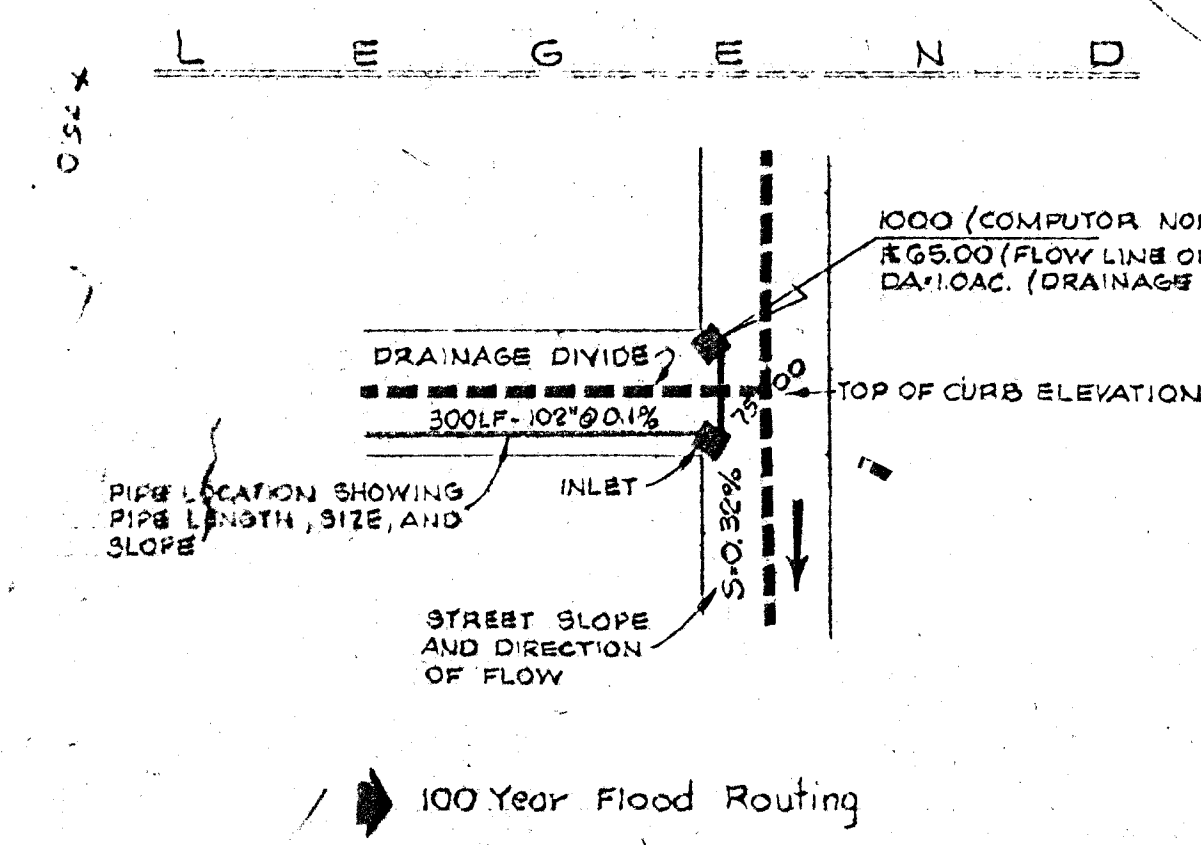
Northwest corner, Northwest 1/4, Section 21 Township 28 South, Range 1 East of the 6th PM

Bench Mark: Hydraulic and 55th Street South City Bench Mark Disc. 44 ft west and 30 ft south center line both Elev. 76.514

EXISTING 24" RCP NORTH R. 73.36



Vicinity Map Scale: 1"=200'



Revised street grades and drainage system (11/30/09)

1 changed street grades - Southeast area (1/2/10)

No.	Revision	By	Date
1	changed street grades - Southeast area	JES	1/2/10

Bo-Mar First Addition Revised Drainage Plan

PROFESSIONAL ENGINEERING CONSULTANTS, P.A.
ENGINEERS
WICHITA, KANSAS

Designed by *Brennenstuhl* Job No. 10416 Sht. 1 of 5
Drawn by *JES* Date