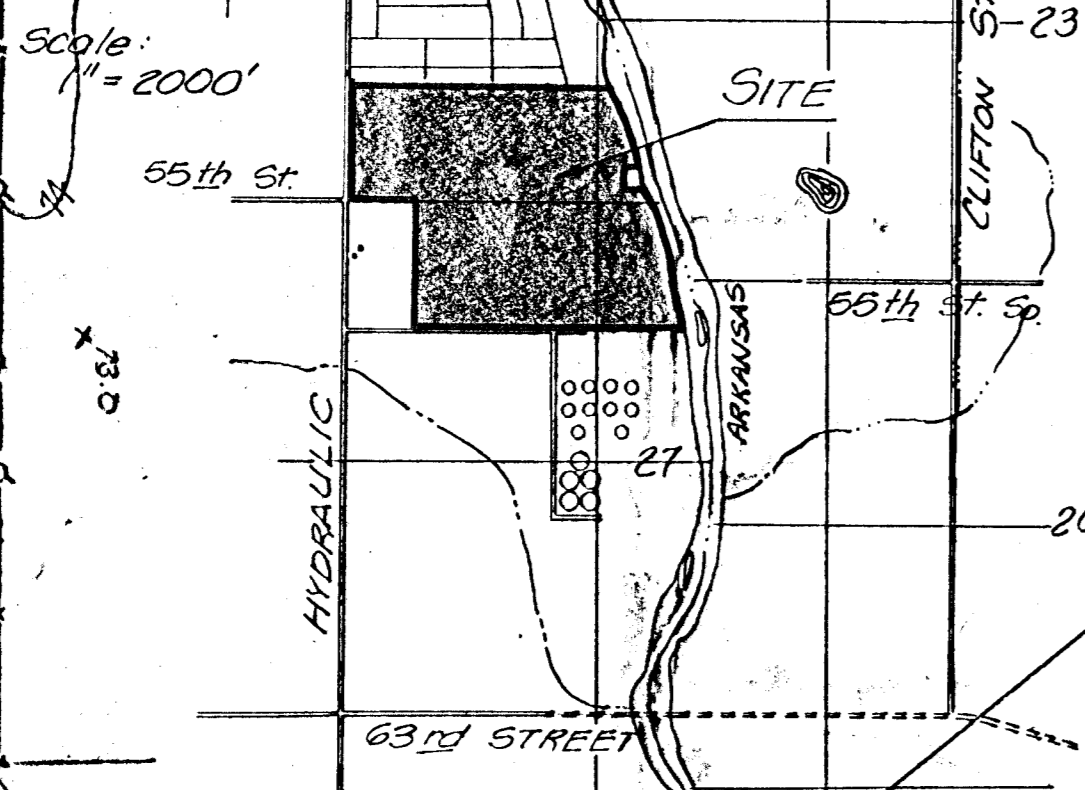


N.M. Cor. N. 1/4, Sec. 27,  
T28S, R1E of the 6th P.M.

Scale: 1" = 100'  
March 6, 1970  
Topo at 2' Intervals  
Elevations City Datum



OWNER TO OBTAIN (BY  
SEPARATE INSTRUMENT)  
A DRAINAGE AND  
STORM SEWER EIGHT  
TO HYDRAULIC  
DRAINAGE TO THEN  
BE SOUTHWARD TO  
THE SLOUGH.

**PRELIMINARY PLAT DRAINAGE CONCEPT**  
**SOUTHWIND ADDITION**

OWNER/DEVELOPER: JAMES W. CATRON  
Architect, Kansas  
ENGINEER: PROFESSIONAL ENGINEERING CONSULTANTS  
1440 E. English  
Wichita, Kansas

EXISTING STRUCTURE  
TO BE REMOVED AND  
REPLACED WITH  
LARGER STRUCTURE  
DESIGNED TO  
APPROVAL OF  
WICHITA-VALLEY CENTER  
FLOOD CONTROL  
AND  
U.S. CORPS OF ENGINEERS.