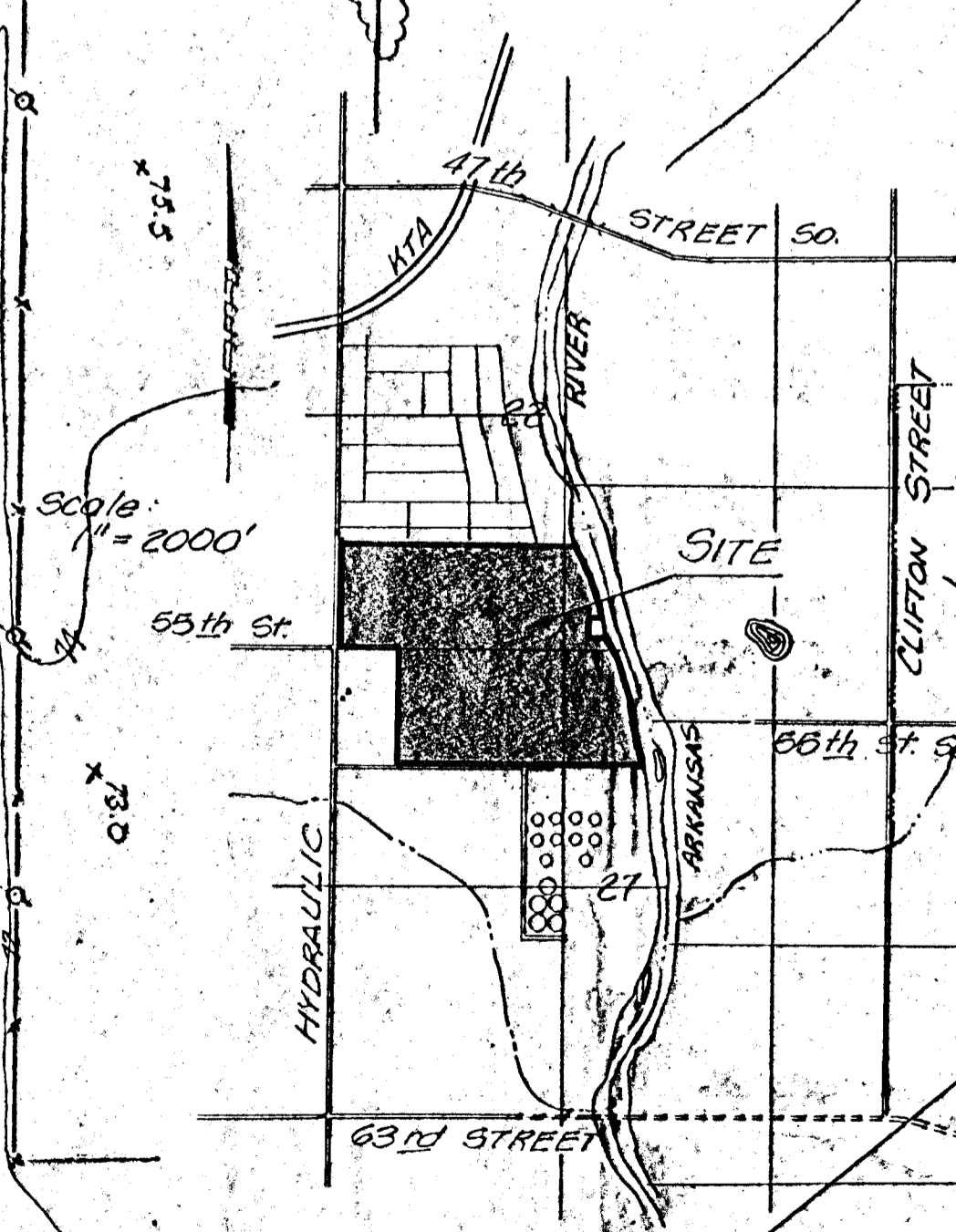




N.M. COR. N. 1/4, SEC. 27,  
T28S, R1E of the 6th P.M.

Scale: 1" = 100'  
March 6, 1979  
Topo at 2' Intervals  
Elevations City Datum



OWNER TO OBTAIN (BY SEPARATE INSTRUMENT) A DRAINAGE AND STORM SEWER EJECTA TO HYDRAULIC, DRAINAGE TO THEN BE SOUTHWARD TO THE SLOUGH.

**PRELIMINARY PLAT DRAINAGE CONCEPT**  
**SOUTHWIND ADDITION**

OWNER/DEVELOPER: JAMES A. CATRON  
Wichita, Kansas  
ENGINEER: PROFESSIONAL ENGINEERING CONSULTANTS  
1440 E. English  
Wichita, Kansas

EXISTING STRUCTURE TO BE REMOVED AND REPLACED WITH LARGER STRUCTURE DESIGNED TO APPROVAL OF WICHITA-VALLEY CENTER FLOOD CONTROL AND U.S. CORPS OF ENGINEERS