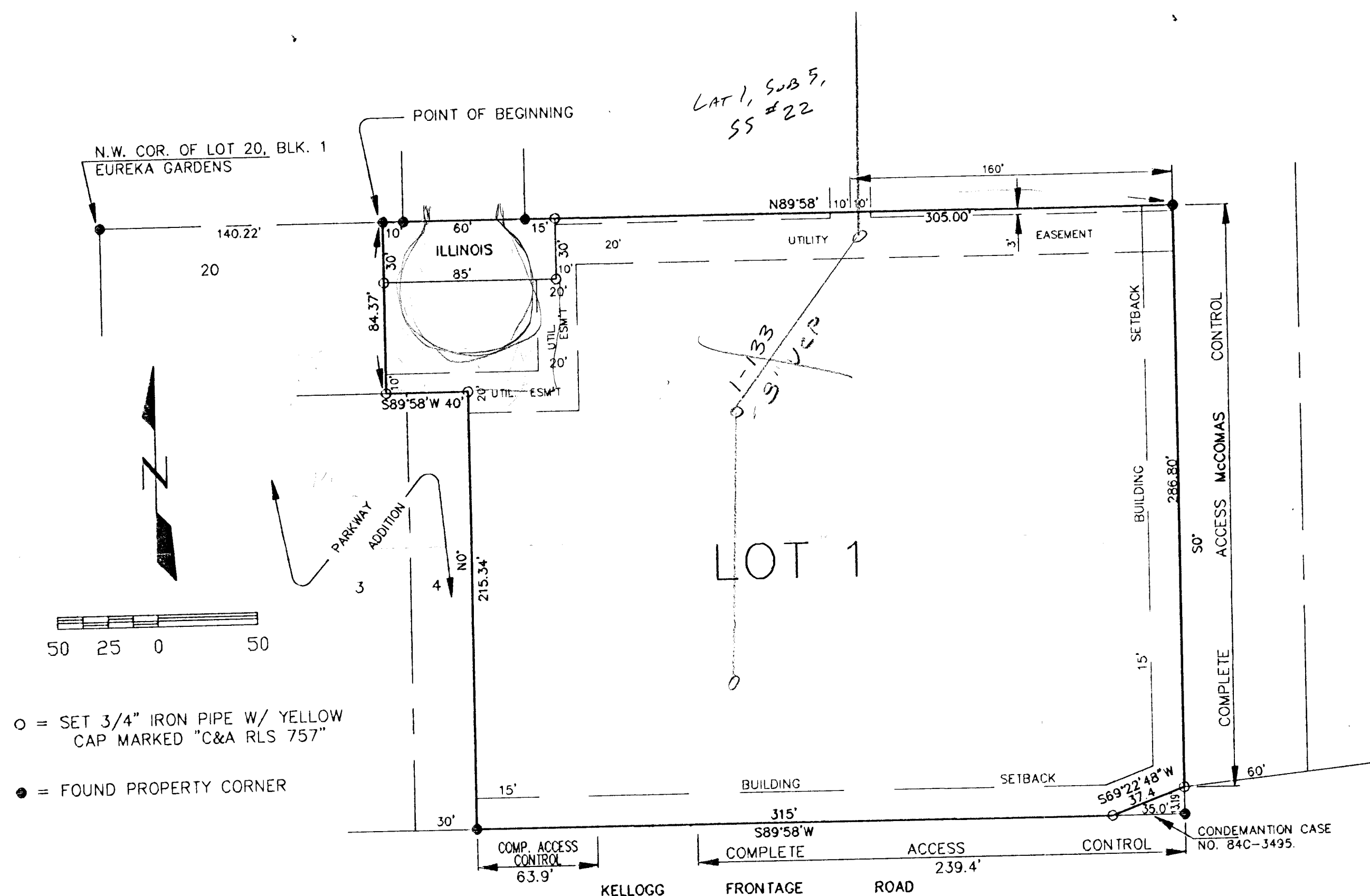


BONANZA ADDITION

WICHITA, SEDGWICK COUNTY, KANSAS



○ = SET 3/4" IRON PIPE W/ YELLOW CAP MARKED "C&A RLS 757"

● = FOUND PROPERTY CORNER

ENTERED ON TRANSFER RECORD THIS _____ DAY OF _____, 1994.

_____, COUNTY CLERK
SUSAN CROCKETT-SPOON

STATE OF KANSAS }
COUNTY OF SEDGWICK }SS

THIS IS TO CERTIFY THAT THIS INSTRUMENT WAS FILED FOR RECORD IN THE REGISTER OF DEEDS OFFICE, AT _____ A.M.-P.M., ON THE _____ DAY OF _____, 1994.

_____, REGISTER OF DEEDS

ED RESA, DEPUTY

STATE OF KANSAS }
COUNTY OF SEDGWICK }SS

THIS PLAT APPROVED AND ALL DEDICATIONS SHOWN HEREON, IF ANY, ACCEPTED BY THE CITY COUNCIL OF THE CITY OF WICHITA, KANSAS, THIS _____ DAY OF _____, 1994.

_____, MAYOR
ELWA BROADFOOT

_____, CITY CLERK
PAT BURNETT

(SEAL)

I, RAYMOND M. HUBBELL, THE UNDERSIGNED, REGISTERED LAND SURVEYOR OF THE STATE OF KANSAS, DO HEREBY CERTIFY THAT I CAUSED TO HAVE SURVEYED AND PLATTED BONANZA ADDITION, WICHITA, SEDGWICK COUNTY, KANSAS; DESCRIBED AS BEGINNING AT A POINT ON THE NORTH LINE OF LOT 20, BLOCK 1, EUREKA GARDENS TO SEDGWICK COUNTY, KANSAS (NOW IN WICHITA), SAID POINT BEING 140.72 FEET EAST OF THE NORTHWEST CORNER OF SAID LOT 20, BLOCK 1; THENCE SOUTH, PARALLEL WITH THE EAST LINE OF SAID LOT 20, BLOCK 1, TO A POINT ON THE NORTH LINE OF PARKWAY ADDITION TO WICHITA, KANSAS; THENCE EAST ALONG SAID NORTH LINE A DISTANCE OF 40 FEET; THENCE SOUTH PARALLEL WITH AND 30 FEET EAST OF THE WEST LINE OF LOT 4 OF SAID PARKWAY ADDITION TO THE SOUTH LINE OF SAID LOT 4; THENCE EAST ALONG THE SOUTH LINES OF LOTS 4, 5, AND VACATED ALLEY OF SAID PARKWAY ADDITION AND THE SOUTH LINE OF LOT 23, BLOCK 2 OF SAID EUREKA GARDENS TO A POINT 35 FEET WEST OF THE EAST LINE OF SAID LOT 23, BLOCK 2; THENCE NORTHEASTERLY TO A POINT ON THE EAST LINE OF SAID LOT 23 AND 13.19 FEET NORTH OF THE SOUTHEAST CORNER OF SAID LOT 23; THENCE NORTH ALONG THE EAST LINE OF SAID BLOCK 2 TO THE NORTHEAST CORNER OF LOT 20, BLOCK 2 OF SAID EUREKA GARDENS; THENCE WEST ALONG THE NORTH LINES AND EXTENDED NORTH LINES OF LOT 20, AND LOT 10, SAID BLOCK 2 TO THE POINT OF BEGINNING; ALL LYING IN SEDGWICK COUNTY, KANSAS.

DATE SIGNED _____, 1994.

(SEAL)

RAYMOND M. HUBBELL, RLS 757

KNOW ALL MEN BY THESE PRESENTS, THAT WE, THE UNDERSIGNED, OWNERS OF THE LAND DESCRIBED IN THE SURVEYOR'S CERTIFICATE TO BE PLATTED INTO A LOT AND STREET TO BE KNOWN AS BONANZA ADDITION, WICHITA, SEDGWICK COUNTY, KANSAS; THE UTILITY EASEMENTS AS INDICATED ARE HEREBY GRANTED TO THE PUBLIC FOR CONSTRUCTION AND MAINTENANCE OF ALL PUBLIC UTILITIES, AND FOR DRAINAGE PURPOSES WITH RIGHTS OF INGRESS AND EGRESS, AND THE STREET IS HEREBY DEDICATED TO AND FOR USE OF THE PUBLIC. THE EASEMENTS AND THAT PART OF ILLINOIS AVENUE DEDICATED BY PREVIOUS PLATS ARE VACATED IN ACCORDANCE WITH KSA 12-512(b).

ALL ABUTTER'S RIGHTS OF ACCESS TO AND FROM MCCOMAS, OVER AND ACROSS THE EAST LINE OF LOT 1; AND ALL ABUTTER'S RIGHTS OF ACCESS TO AND FROM KELLOGG FRONTAGE ROAD OVER AND ACROSS THE SOUTH LINE OF LOT 1, AS SHOWN ARE HEREBY GRANTED TO THE CITY OF WICHITA, PROVIDED, HOWEVER, THAT LOT 1 SHALL HAVE ACCESS TO KELLOGG FRONTAGE ROAD AT ONE LOCATION, AS SHOWN ON PLAT.

DATE SIGNED _____, 1994.

BONANZA, INC.

JACK R. HUNT, PRESIDENT

STATE OF KANSAS }
COUNTY OF SEDGWICK }SS

THIS INSTRUMENT WAS ACKNOWLEDGED BEFORE ME ON _____ DAY OF _____, 1994, BY JACK R. HUNT, PRESIDENT, ON BEHALF OF BONANZA, INC.

SEAL OR STAMP

NOTARY PUBLIC

MY APPOINTMENT EXPIRES _____

STATE OF KANSAS }
COUNTY OF SEDGWICK }SS

THIS PLAT OF BONANZA ADDITION, WICHITA, SEDGWICK COUNTY, KANSAS, HAS BEEN SUBMITTED TO AND APPROVED BY THE WICHITA-SEDGWICK COUNTY METROPOLITAN AREA PLANNING COMMISSION, WICHITA, KANSAS.

DATED THIS _____ DAY OF _____, 1994.

WICHITA-SEDGWICK COUNTY METROPOLITAN AREA
PLANNING COMMISSION

BY _____, CHAIRMAN
JAMES D. MINER

(SEAL)

MARVIN KROUT, SECRETARY