

BROOKHOLLOW  
FOURTH ADDITION  
ZONING A-A

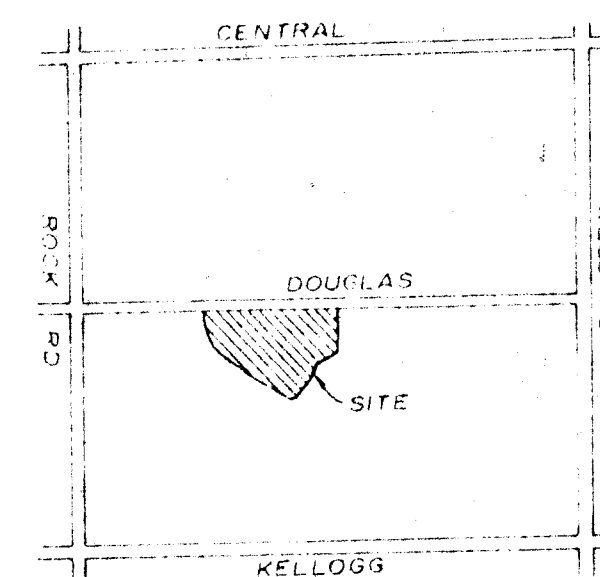
WILLARD GARVEY  
ZONING A-A

ALL EXISTING STRUCTURES  
TO REMAIN.

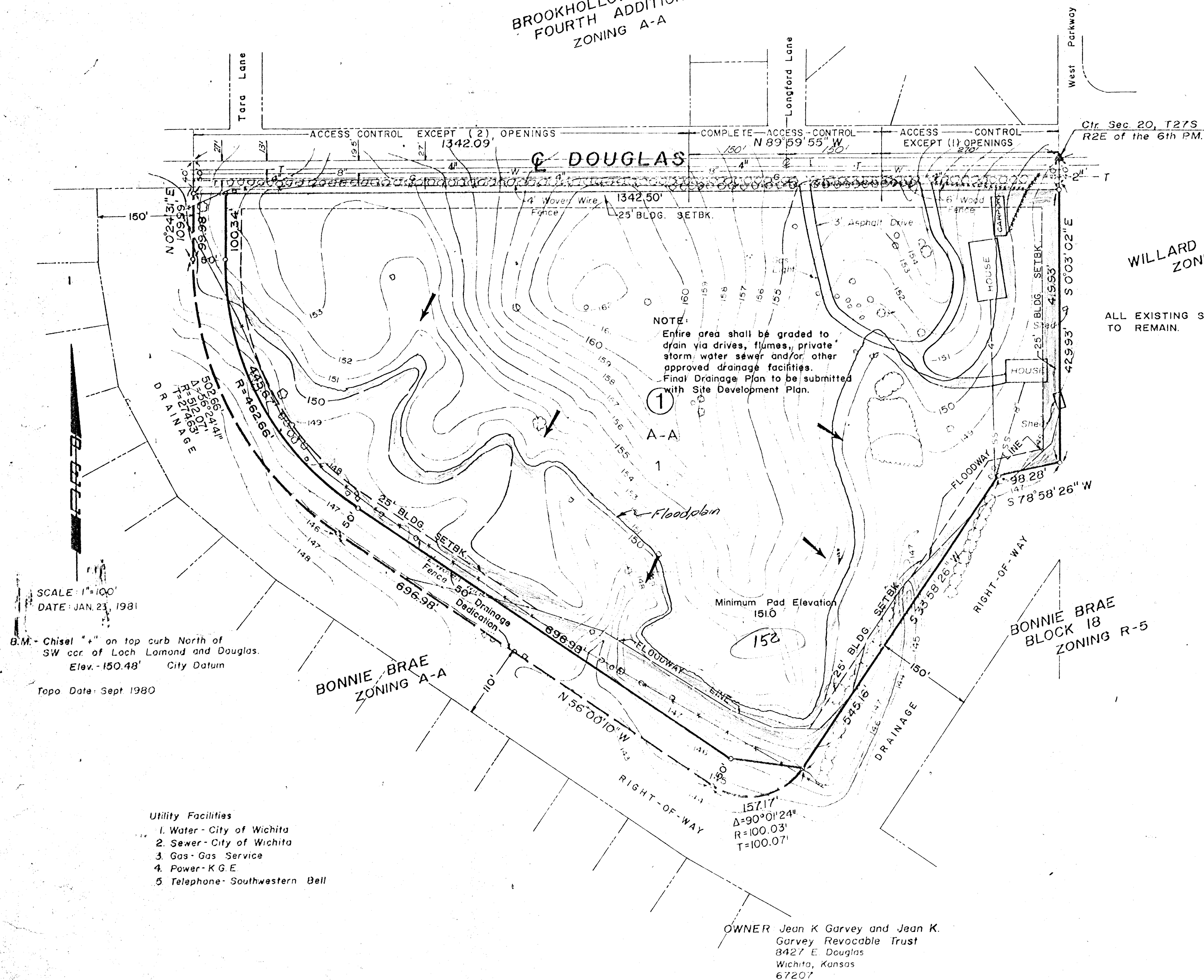
# THE BONNIE BRAES

DRAINAGE CONCEPT/PLAN  
FEBRUARY 1981

*Would Recommend a  
higher Minimum Pad  
(1520)*



VICINITY MAP



NOTE:  
Entire area shall be graded to  
drain via drives, flumes, private  
storm water sewer and/or other  
approved drainage facilities.  
Final Drainage Plan to be submitted  
with Site Development Plan.

①  
A-A  
1

OWNER: Jean K Garvey and Jean K.  
Garvey Revocable Trust  
8427 E Douglas  
Wichita, Kansas  
67207

ENGINEER: Professional Engineering Consultants PA.  
1446 E English  
Wichita, Kansas  
67211

SCALE: 1"=100'  
DATE: JAN. 23, 1981

B.M. Chisel "1" on top curb North of  
SW cor. of Loch Lamond and Douglas.  
Elev. -150.48' City Datum

Topo Data: Sept 1980

Utility Facilities

1. Water - City of Wichita
2. Sewer - City of Wichita
3. Gas - Gas Service
4. Power - K G E
5. Telephone - Southwestern Bell